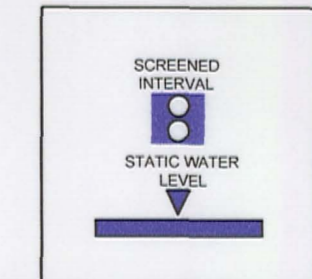
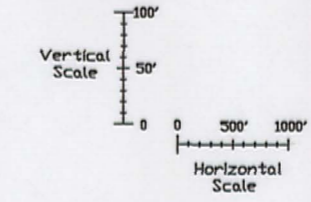
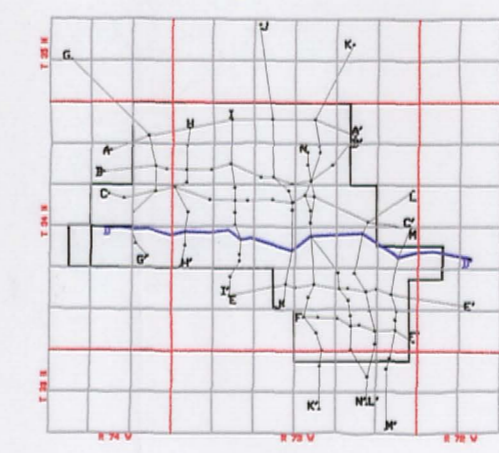
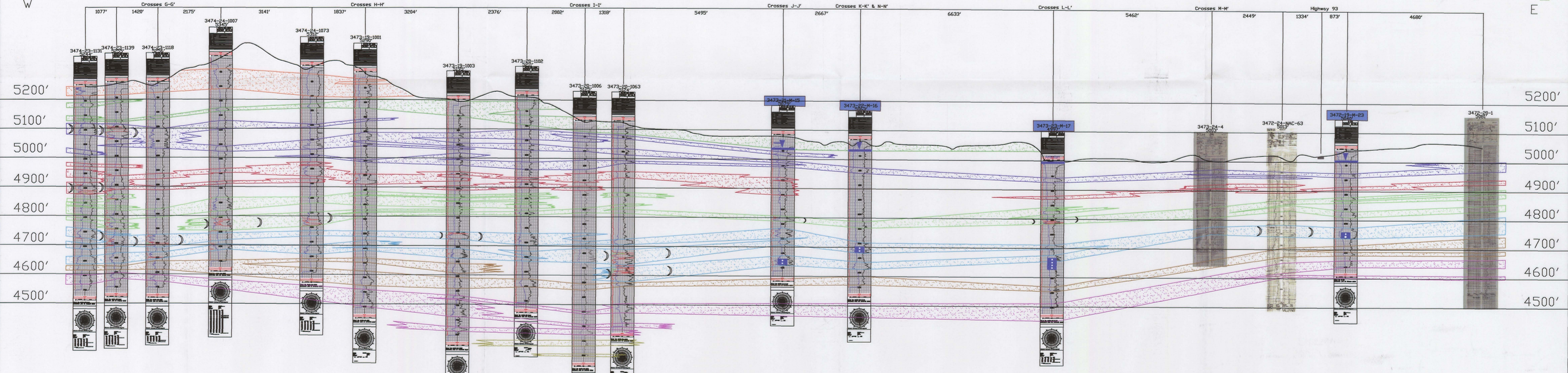


D

D'



LEGEND	
120 SAND	
110 SAND	
100 SAND	
90 SAND	
80 SAND	
70 SAND	
60 SAND	
50 SAND	
40 SAND	
ROLL FRONT	
NTS	

NOT TO SCALE  
LOOKING NORTH

**uraniumone™**  
investing in our energy  
907 North Poplar St., Suite 260, Casper, WY 82601 307-234-8235

**LUDEMAN PROJECT**  
**CROSS SECTION D-D'**  
T.34N., R.74W., Sec. 23,24  
T.34N., R.73W., Sec. 19,20,21,22,23,24  
T.34N., R.72W., Sec. 19,20  
CONVERSE COUNTY, WYOMING

Date:	02/09/2009	By:	TC	Checked:	
Rev. No.	1	Description		Date	07/28/2009
				By	TC

FIGURE:  
2-13

DO2