

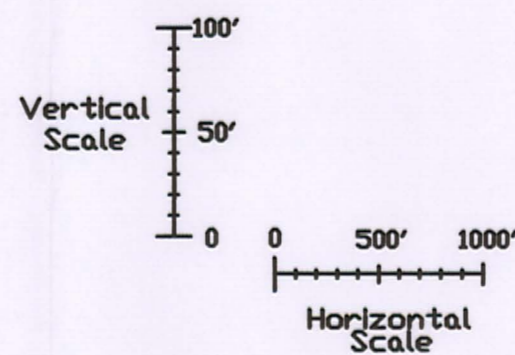
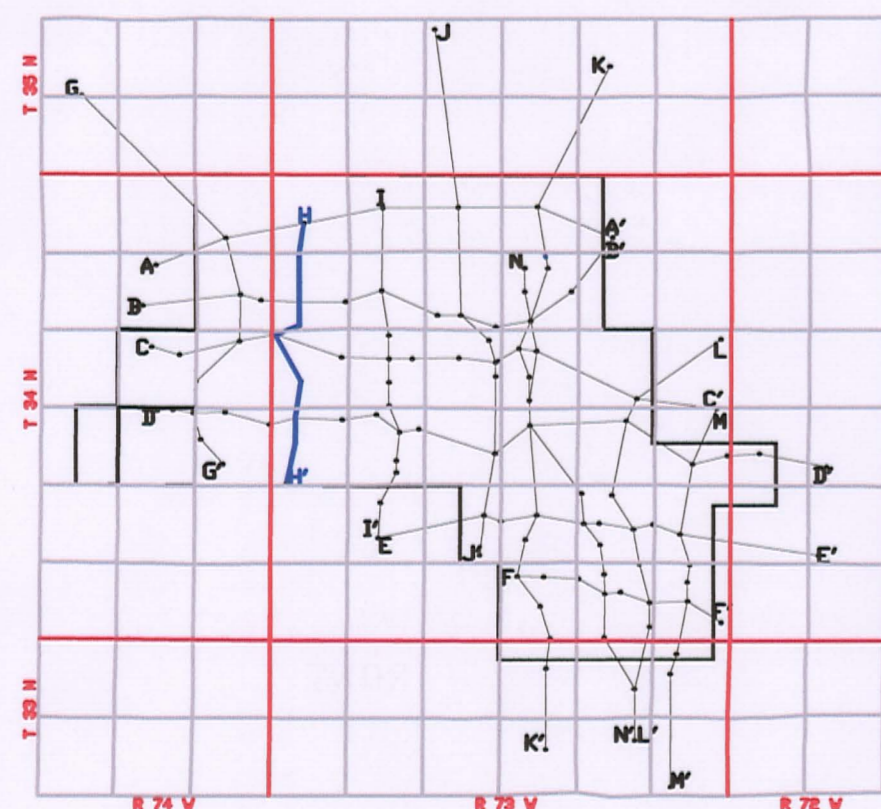
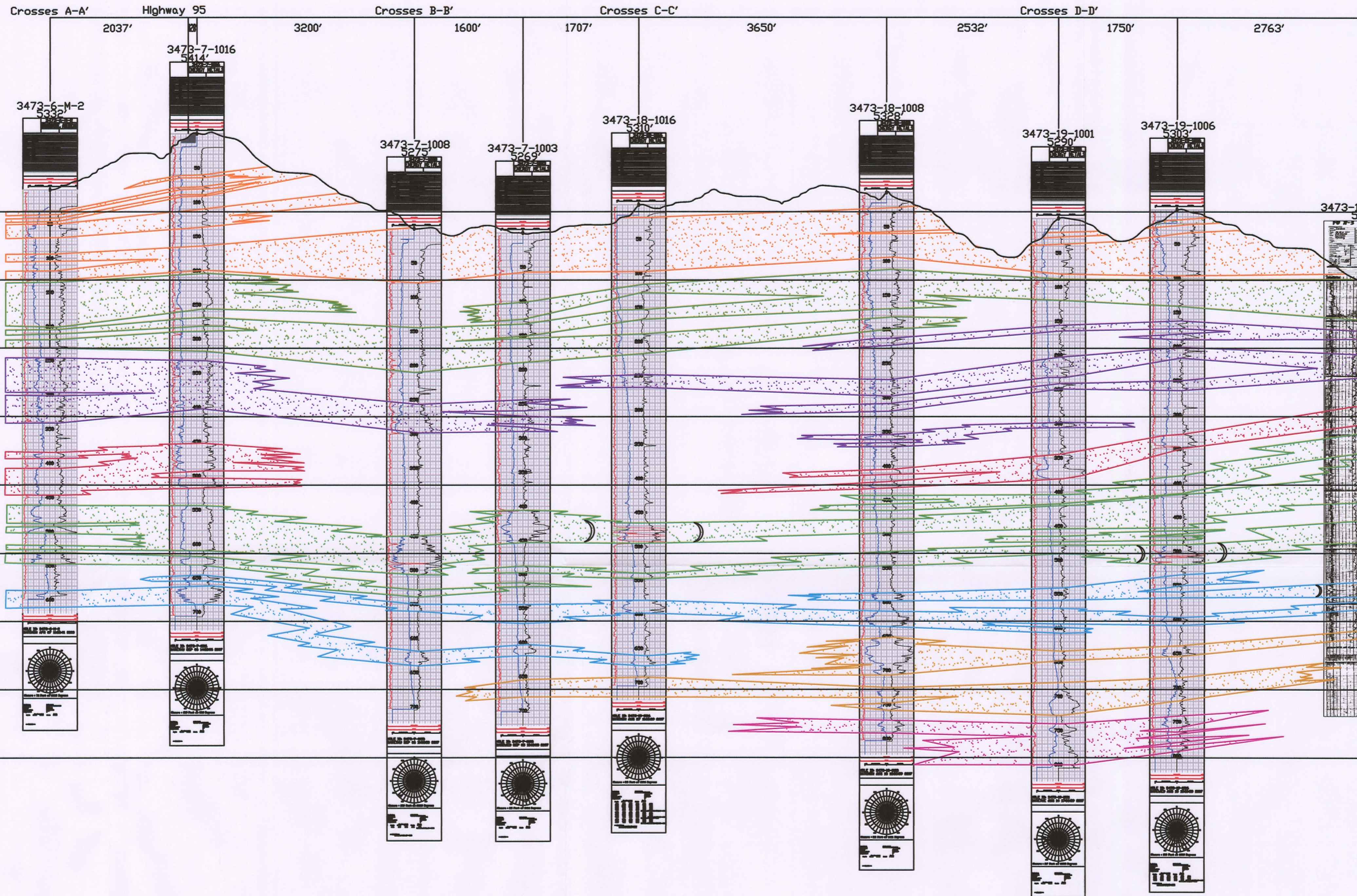
H
N

H'
S

3473-6 3473-7

3473-7 3473-18

3473-18 3473-19



LEGEND

- 120 SAND [Pattern]
- 110 SAND [Pattern]
- 100 SAND [Pattern]
- 90 SAND [Pattern]
- 80 SAND [Pattern]
- 70 SAND [Pattern]
- 60 SAND [Pattern]
- 50 SAND [Pattern]

ROLL FRONT
NTS

)
NOT TO SCALE

LOOKING EAST



907 North Poplar St., Suite 260, Casper, WY 82601 307-234-8235

LUDEMAN PROJECT
CROSS SECTION H-H'

T.34N., R.73W., Sec. 6,7,18,19

CONVERSE COUNTY, WYOMING

Date:	02/09/2009	By:	TC	Checked:	
-------	------------	-----	----	----------	--

Rev. No.	Description	Date	By	Checked
1		07/28/2009	TC	

FIGURE:
2.6-10

7 038 008