

F

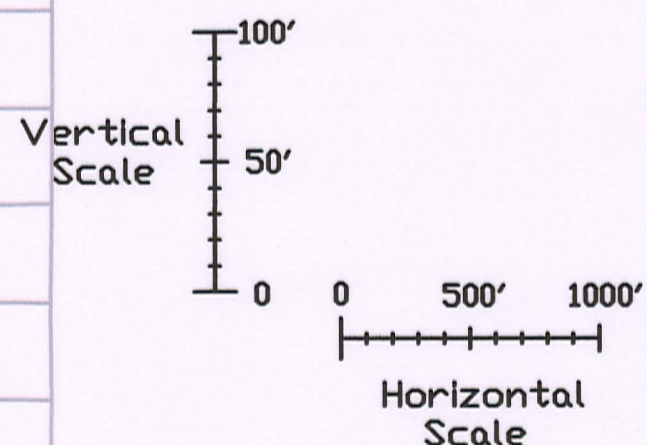
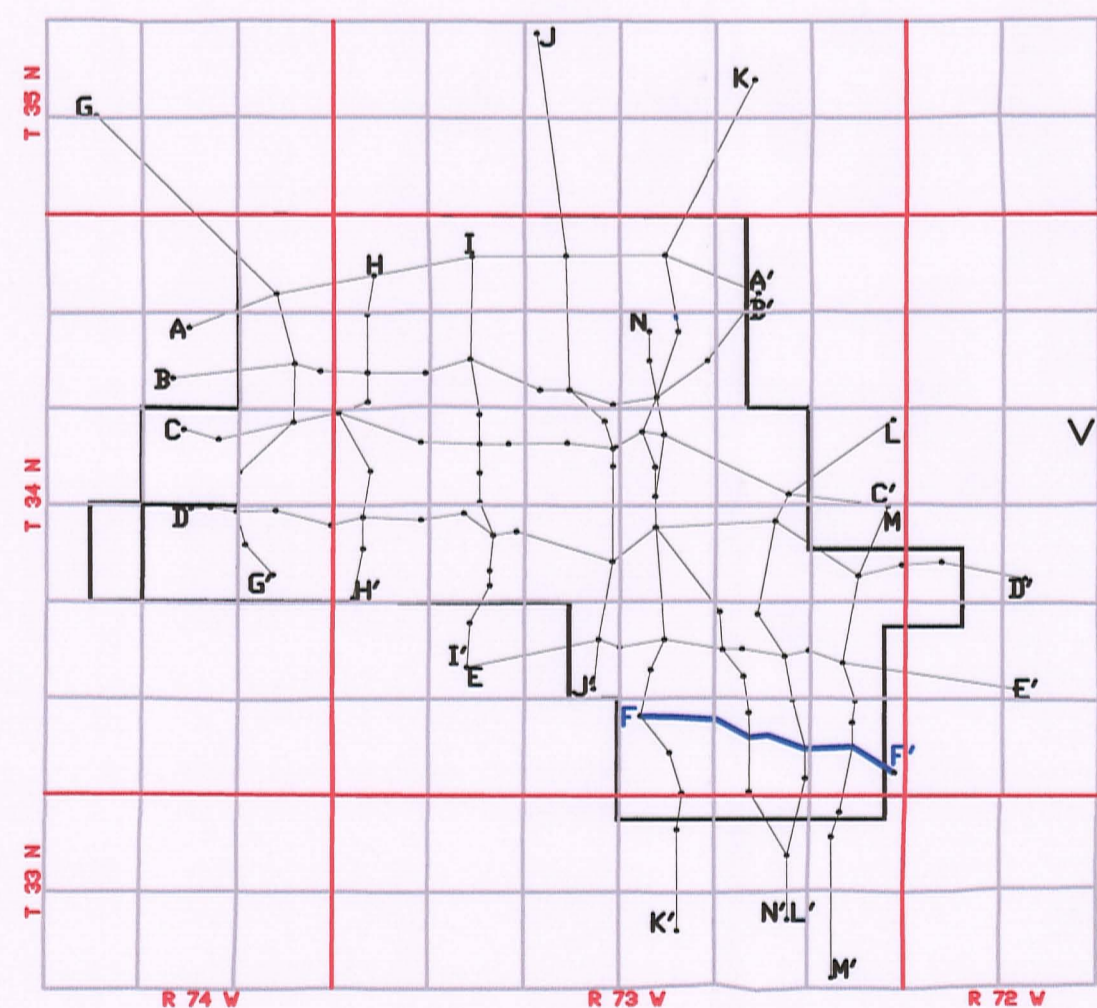
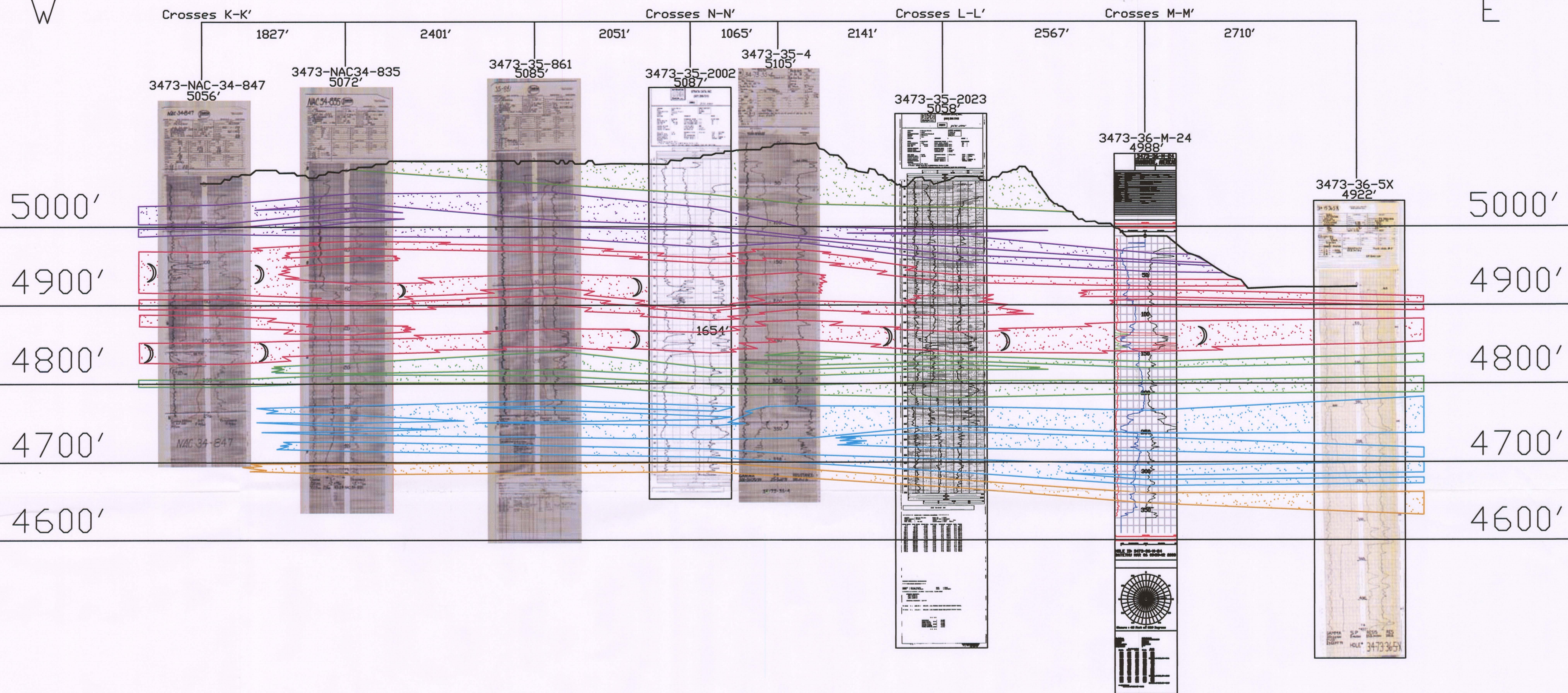
F'

W

E

3473-34 | 3473-35

3473-35 | 3473-36



LEGEND

- 110 SAND
- 100 SAND
- 90 SAND
- 80 SAND
- 70 SAND
- 60 SAND

ROLL FRONT
NTS

)
NOT TO SCALE

LOOKING NORTH



907 North Poplar St., Suite 260, Casper, WY 82601 307-234-8235

LUDEMAN PROJECT

CROSS SECTION F-F'

T.34N., R.73W., Sec. 34,35,36
CONVERSE COUNTY, WYOMING

Date: 02/09/2009 By: TC Checked:

Rev. No.	Description	Date	By
1		07/28/2009	TC

FIGURE:
2.6-8

013-006