

E

W

3473-29 | 3473-28

3473-28 | 3473-27

3473-27 | 3473-26

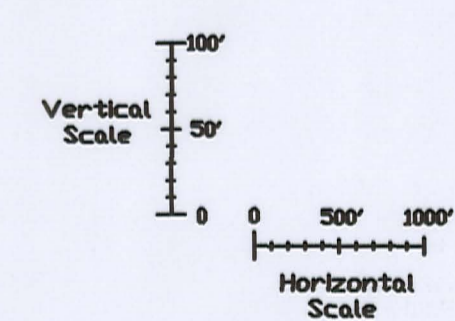
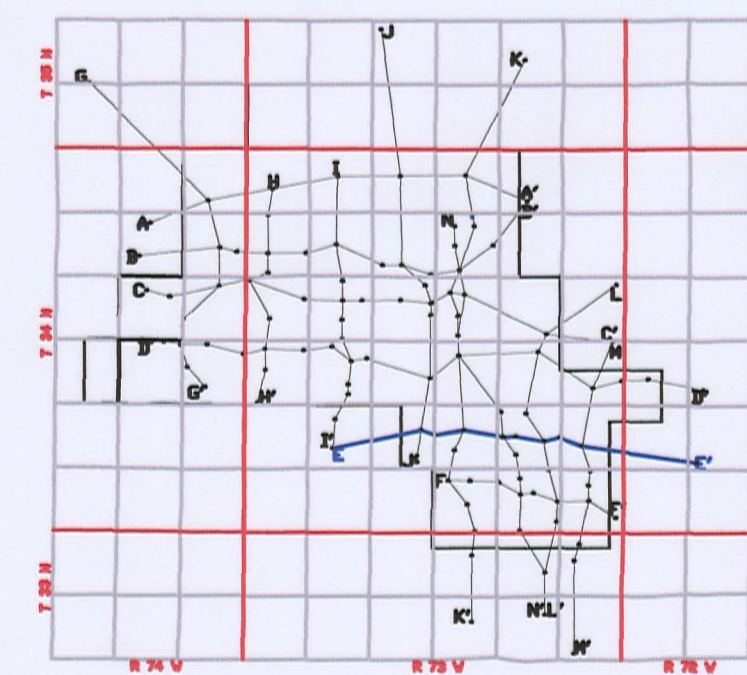
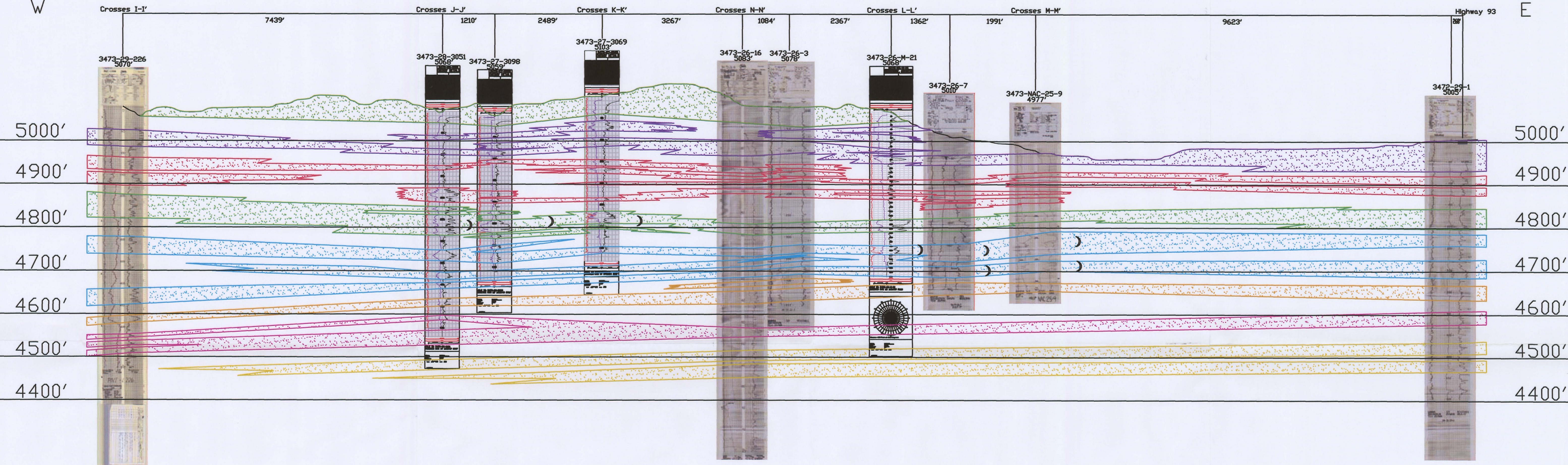
3473-26 | 3473-25

3473-25 | 3472-30

3472-30 | 3472-29

E'

E



LEGEND

- 110 SAND
- 100 SAND
- 90 SAND
- 80 SAND
- 70 SAND
- 60 SAND
- 50 SAND
- 40 SAND

ROLL FRONT)
NTS NOT TO SCALE

LOOKING NORTH



907 North Poplar St., Suite 260, Casper, WY 82601 307-234-8235

LUDEMAN PROJECT
CROSS SECTION E-E'

T.34N., R.73W., Sec. 29,28,27,26,25
T.34N., R.72W., Sec. 30,29
CONVERSE COUNTY, WYOMING

Date:	02/09/2009	By:	TC	Checked:	
Rev. No.	1	Description		Date	07/28/2009
				By	TC

FIGURE:
2.6-7

028-1205