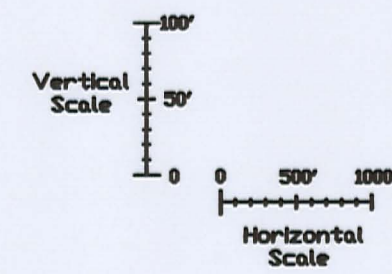
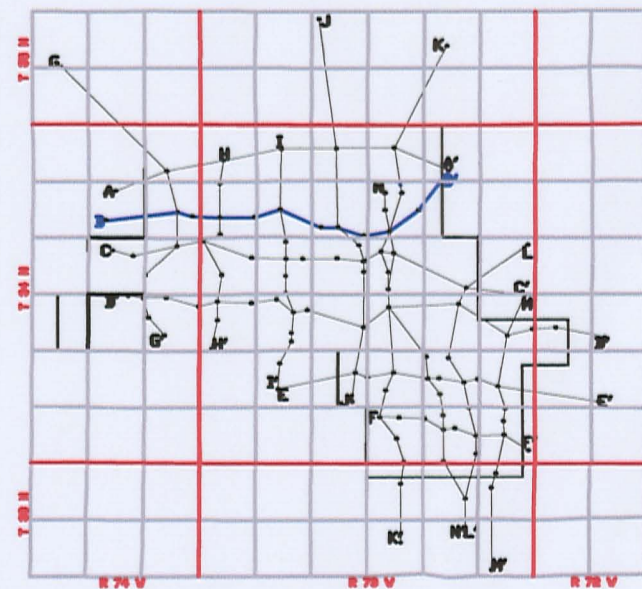
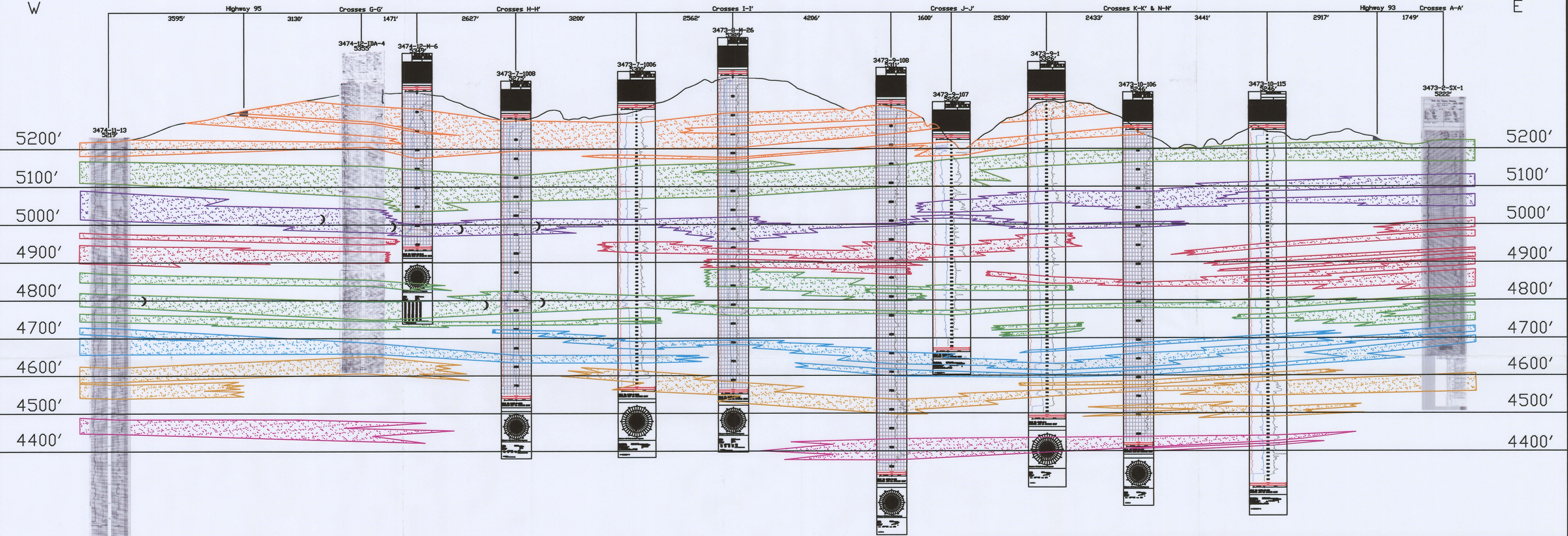


B

B'

W

E



LEGEND

- 120 SAND
- 110 SAND
- 100 SAND
- 90 SAND
- 80 SAND
- 70 SAND
- 60 SAND
- 50 SAND

ROLL FRONT  
NTS

)  
NOT TO SCALE

LOOKING NORTH



907 North Poplar St., Suite 260, Casper, WY 82601 307-234-8235

LUDEMAN PROJECT  
 CROSS SECTION B-B'  
 T.34N., R.74W., Sec.11,12  
 T.34N., R.73W., Sec.7,8,9,10,11,2  
 CONVERSE COUNTY, WYOMING

Date:	02/09/2009	By:	TC	Checked:	
Rev. No.	1	Description		Date	07/28/2009
				By	TC

FIGURE:  
2.6-4

02B-202