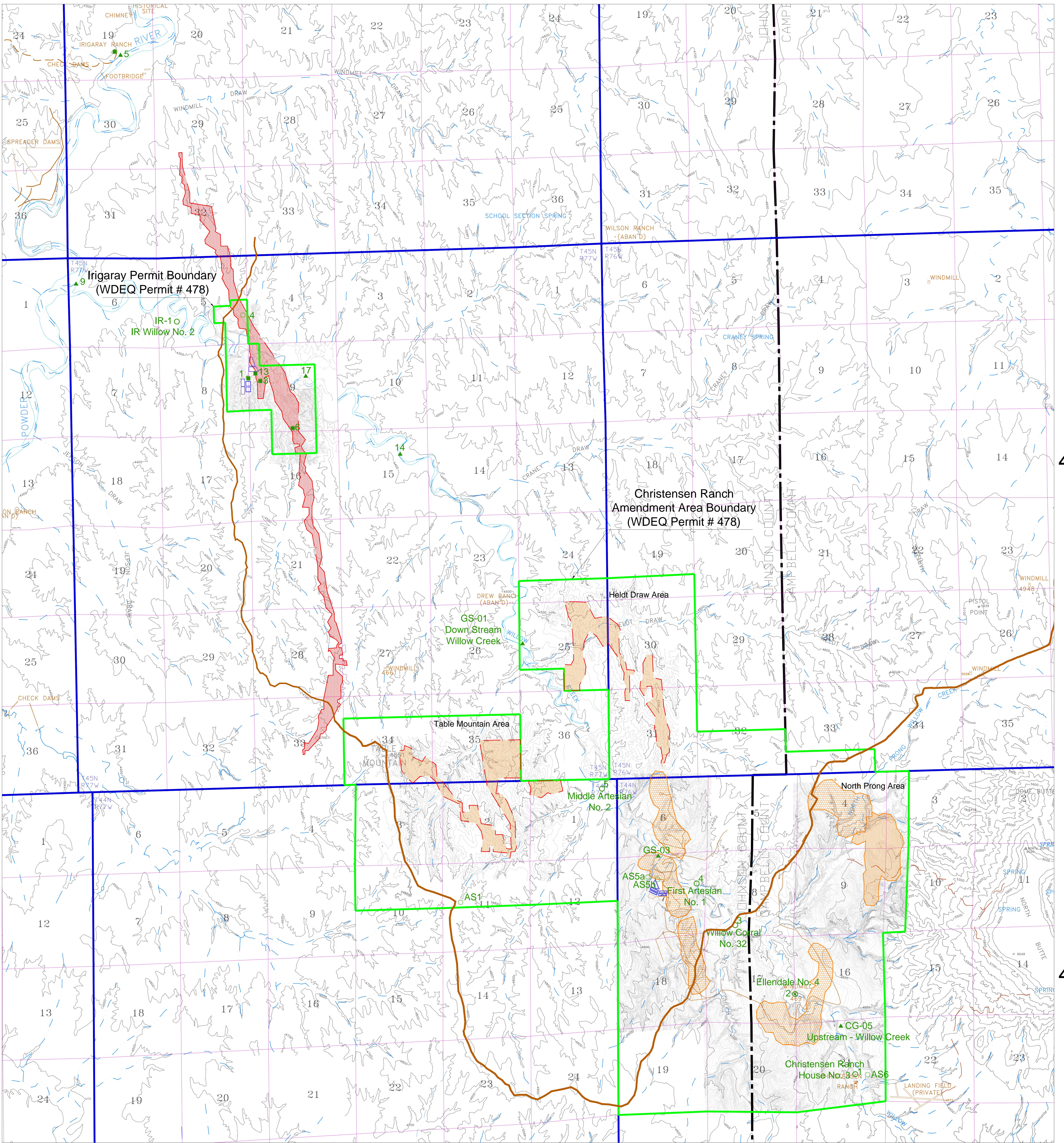


R 77 W

R 76 W



T 45 N

T 45 N

T 44 N

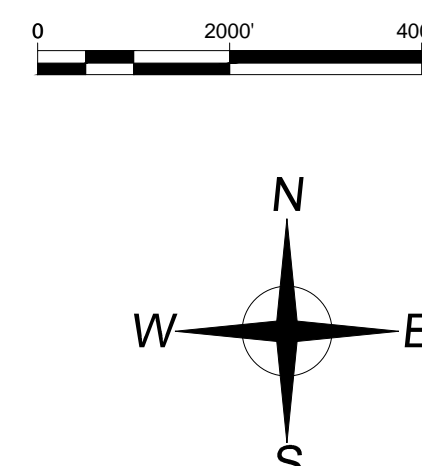
T 44 N

R 77 W

R 76 W

LEGEND

- Wellfield Access Roads
- Haul Road
- Wellfield Area - Existing
- Wellfield Area - Future
- Evaporation Ponds
- Topsoil Stockpile
- Air Sample Location (Radon and Particulate)
- Air Sample Location (Radon and Particulate)
- Vegetation Sample Location
- Soil Sample Location
- Direct Radiation Monitor Location
- Air Sample Location (Radon)
- Vegetation Sample Location
- Soil Sample Location
- Direct Radiation Monitor Location
- Stock & Domestic Well Sample Location
- Regional Groundwater Monitoring Location
- Upstream & Downstream Surface Water Sample Location



uraniumone
investing in our energy
907 North Poplar St., Suite 260, Casper, WY 82601 307-234-8235

**Irigaray & Christensen Ranch
Environmental Monitoring
Station Locations**
Wyoming
Johnson and Campbell Counties

Rev. No.	Description	Date	By	Sheet:
1	Updated 2009 CIM Original for 2010	August, 2010	CEO: U1	
2	Moved location of GS-01	August, 2010	CEO: U1	

Date: September 2011 By: CMI August 2009 Checked: