

R. 77 W.

T. 45 N.

1180000
1179000
1178000
1177000
1176000
1175000
1174000
1173000
1172000
1171000

54
89

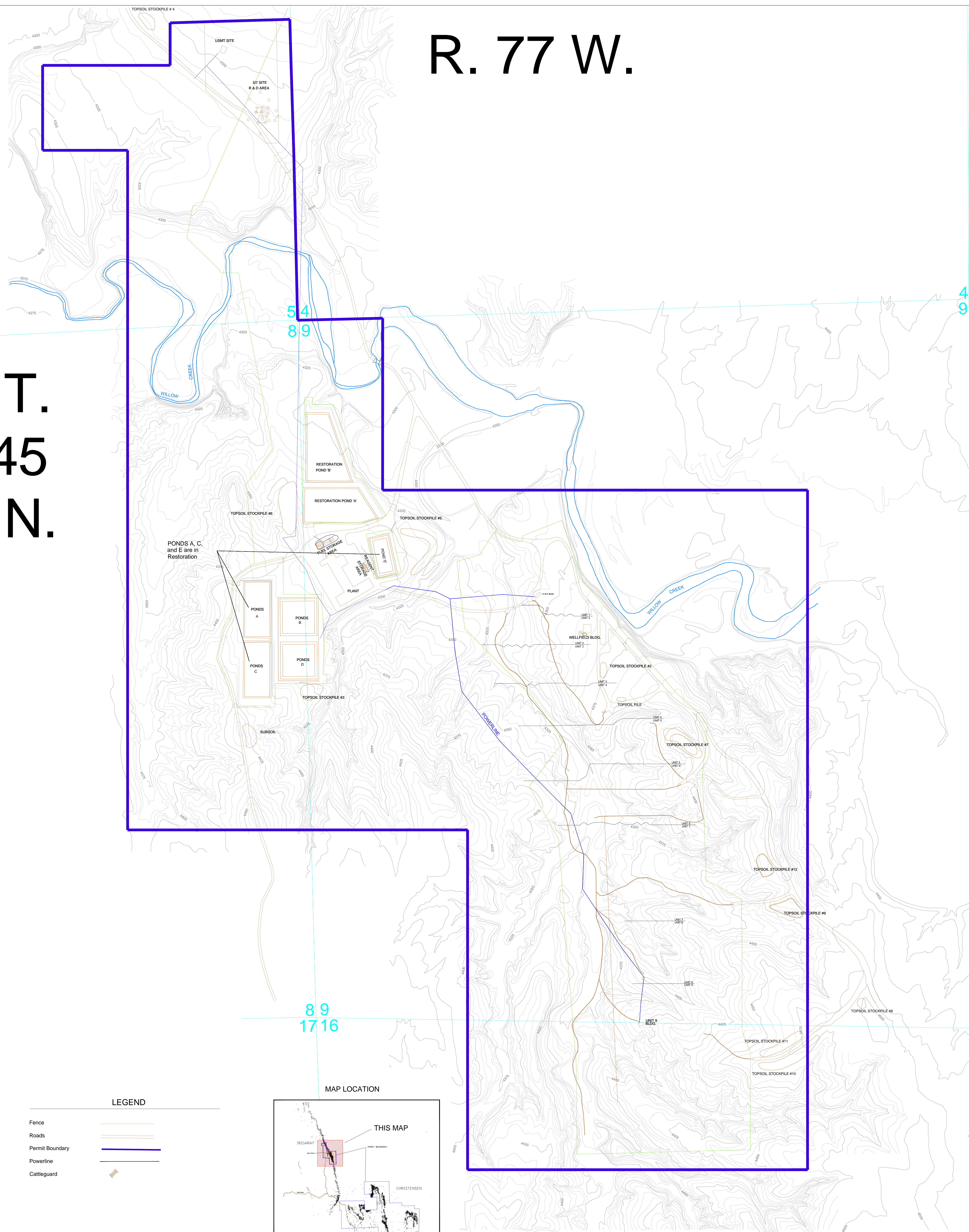
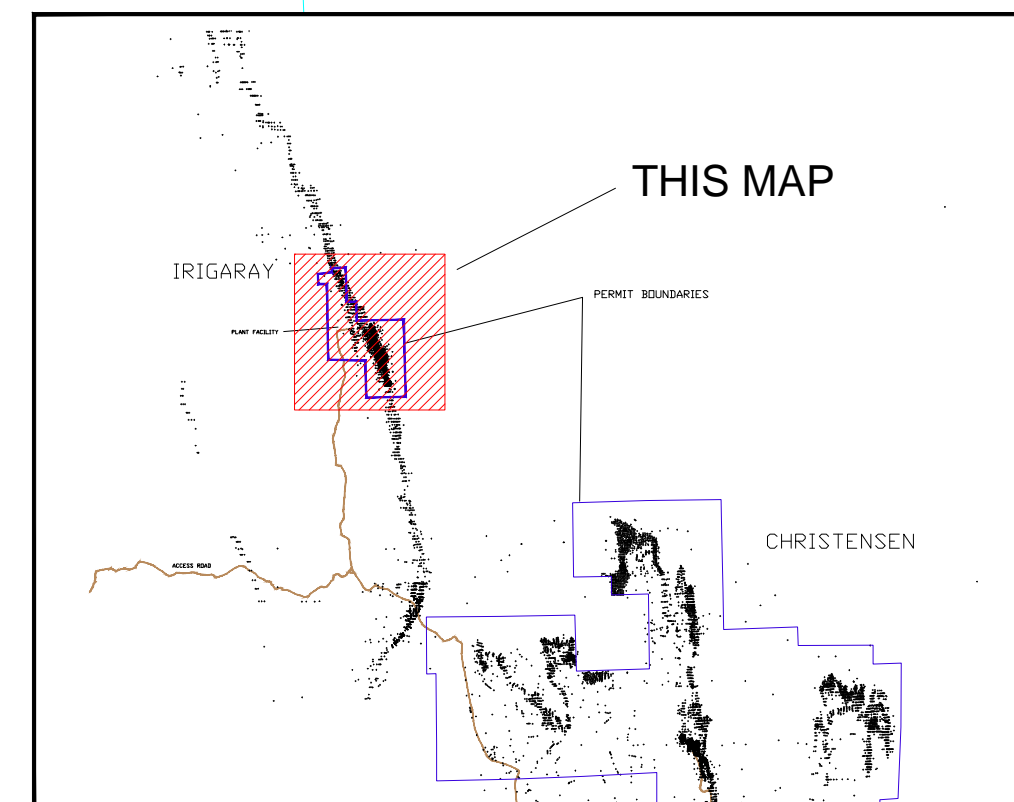
49

89
1716

LEGEND

- Fence
- Roads
- Permit Boundary
- Powerline
- Cattleguard

MAP LOCATION



uraniumone
investing in our energy
907 North Poplar St., Suite 260, Casper, WY 82601 307-234-8235

Irigaray Project
General Location Map
Production Units 1 through 9
Permit to Mine # 478
Wyoming
Johnson and Campbell Counties

Date: September 2011	By: CMI August 2009	Checked:		
Rev. No.	Description	Date	By	Sheet:
1	Updated 2009 CMI Original for 2010	August, 2010	CEO: U1	
2	Updated for 2010-2011 Annual Rpt.	Sept., 2011	CEO: U1	

