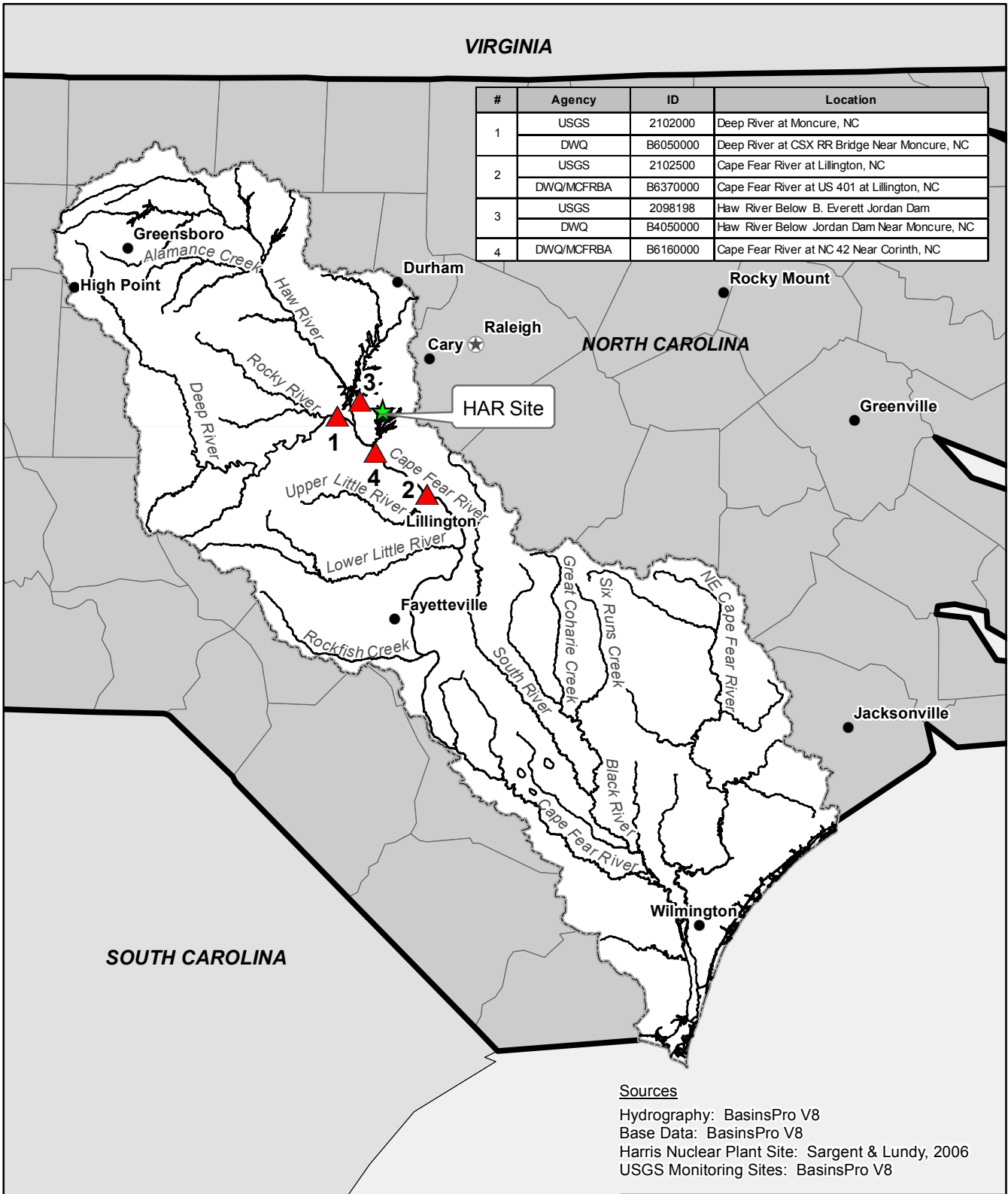


VIRGINIA

#	Agency	ID	Location
1	USGS	2102000	Deep River at Moncure, NC
	DWQ	B6050000	Deep River at CSX RR Bridge Near Moncure, NC
2	USGS	2102500	Cape Fear River at Lillington, NC
	DWQ/MCFRBA	B6370000	Cape Fear River at US 401 at Lillington, NC
3	USGS	2098198	Haw River Below B. Everett Jordan Dam
	DWQ	B4050000	Haw River Below Jordan Dam Near Moncure, NC
4	DWQ/MCFRBA	B6160000	Cape Fear River at NC 42 Near Corinth, NC

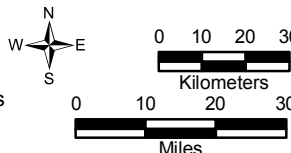


Sources

Hydrography: BasinsPro V8
 Base Data: BasinsPro V8
 Harris Nuclear Plant Site: Sargent & Lundy, 2006
 USGS Monitoring Sites: BasinsPro V8

LEGEND

- Harris Nuclear Plant Site
- Monitoring Stations
- State Capital
- City over 250,000
- Cape Fear Major Lakes, Rivers, and Streams
- Cape Fear River Basin Boundary
- North Carolina County Boundaries
- North Carolina State Boundary



Progress Energy Carolinas

**Shearon Harris Nuclear Power Plant
 Units 2 and 3
 Part 3, Environmental Report**

New Hill, North Carolina

Monitoring Stations on the
 Deep, Haw, and Cape Fear Rivers

FIGURE 2.3-33