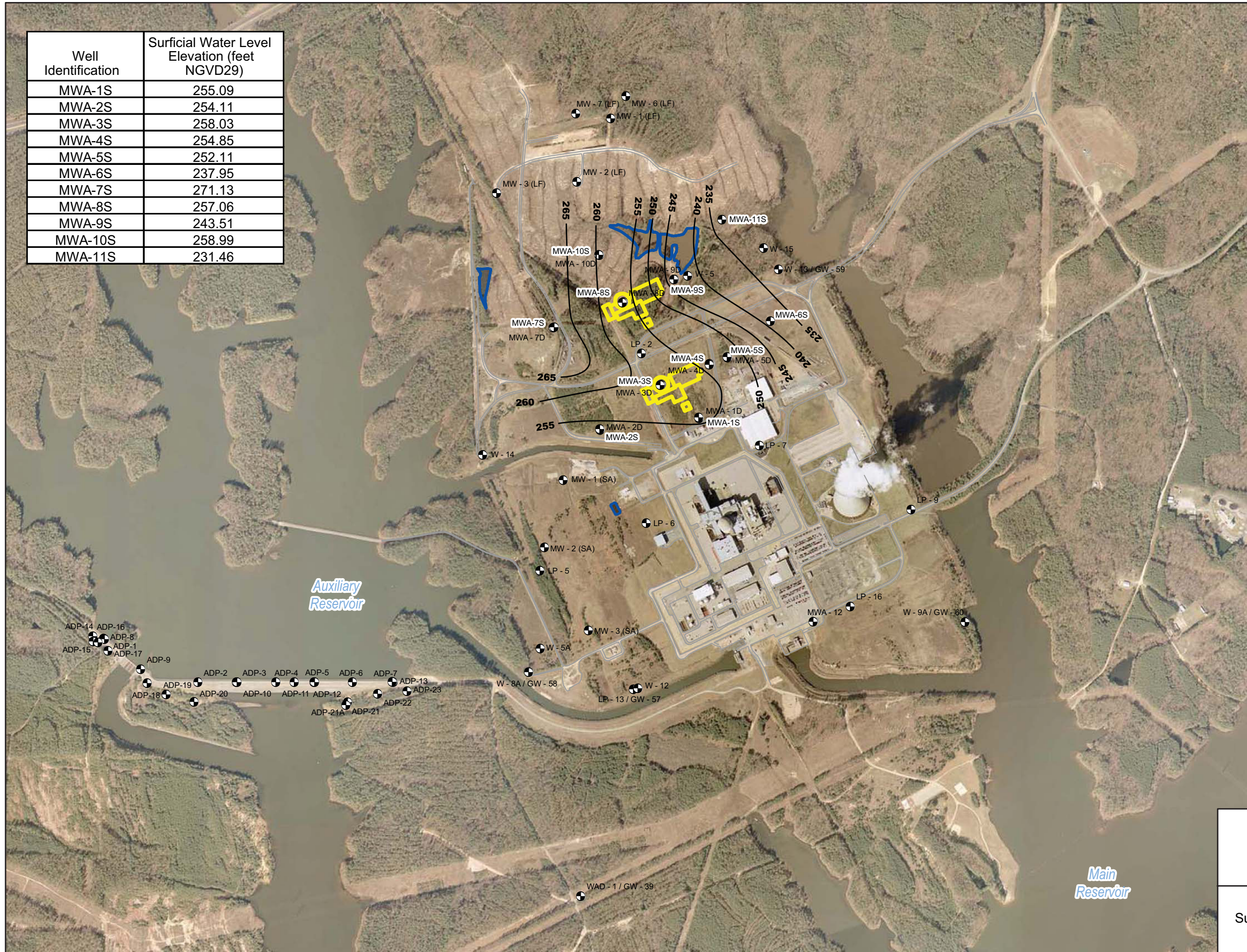


Well Identification	Surficial Water Level Elevation (feet NGVD29)
MWA-1S	255.09
MWA-2S	254.11
MWA-3S	258.03
MWA-4S	254.85
MWA-5S	252.11
MWA-6S	237.95
MWA-7S	271.13
MWA-8S	257.06
MWA-9S	243.51
MWA-10S	258.99
MWA-11S	231.46



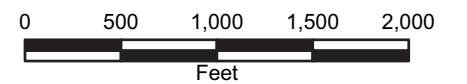
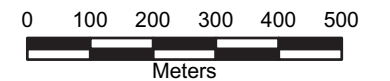
**LEGEND**

- Plant Site Monitoring Wells and Piezometers
- Proposed Safety-Related Structures
- Ponds



**Note:**

- 1) Main Reservoir also known as Harris Reservoir.
- 2) Auxiliary Reservoir normal pool elevation is 252 ft NGVD29.
- 3) Main Reservoir normal pool elevation is 220 ft NGVD29.



Progress Energy Carolinas  
**Shearon Harris Nuclear Power Plant  
 Units 2 and 3**  
**Part 3, Environmental Report**  
 New Hill, North Carolina

---

Potentiometric Surface Map of the  
 Surficial/Overburden Aquifer: May 29, 2007  
**FIGURE 2.3-27**