

# Analyses of historical rail accidents to identify accident parameters impacting transport of spent nuclear fuel

T. S. Mintz<sup>1</sup>, G. Adams<sup>1</sup>, M. Necsoiu<sup>1</sup>, J. Mancillas<sup>1</sup>, C. Bajwa\*<sup>2</sup> and E. Easton<sup>2</sup>

As a regulatory authority for the transportation of spent nuclear fuel (SNF) in the USA, the Nuclear Regulatory Commission requires that SNF transportation packages be designed to endure a fully engulfing fire with an average temperature of 800°C (1475°F) for 30 min, as prescribed in Title 10 of the Code of Federal Regulations Part 71. The work described in this paper was performed to support the Nuclear Regulatory Commission in determining the types of accident parameters that could produce a severe fire with the potential to fully engulf an SNF transportation package. This paper describes the process that was used to characterise the important features of rail accidents that would potentially lead to an SNF transport package being involved in a severe fire. Historical rail accidents involving all hazardous material (i.e. all nine classes of hazardous material) and long duration fires in the USA have been analysed using data from the Federal Railroad Administration and the Pipeline and Hazardous Materials Safety Administration. Parameters that were evaluated from these data include, but were not limited to, class of track where the accident occurred, class of hazardous material that was being transported and number of railcars involved in the fire. The data analysis revealed that in the past 34 years of rail transport, roughly 1800 accidents have led to the release of hazardous materials, resulting in a frequency of roughly one accident per 10 million freight train miles (Because all of the data were obtained in the USA, which still uses distance measured in miles, and the primary source is an extensive database from the Federal Railroad Administration that is also in reported in miles, the data in this paper are reported in miles rather than kilometres. Conversion of miles to kilometres is by multiplication of 1.61.). In the last 12 years, there have only been 20 accidents involving multiple car hazardous material releases that led to a fire. This results in an accident rate of 0.003 accidents per million freight train miles that involved multiple car releases and a fire. Out of all the accidents analysed, only one involved a railcar carrying class 7 (i.e. radioactive) hazardous material.

**Keywords:** Spent nuclear fuel, Transportation, Railroad, Accident, Fire

## Introduction

The Nuclear Regulatory Commission (NRC) currently regulates the packaging for the transportation of radioactive materials under Title 10 of the Code of Federal Regulations (CFR) Part 71. Under these regulations, a spent nuclear fuel (SNF) transportation package must be designed to withstand a series of hypothetical accident conditions, which include drop, crush, puncture, thermal (fire) exposure and immersion in water of the package. This paper focuses on the thermal excursion evaluation.

The current NRC regulations indicate that an SNF package must be designed to withstand a fully engulfing fire with an average flame temperature of at least 800°C for a period of 30 min.<sup>1</sup> If subjected to a severe fire, the transportation package must maintain containment, shielding and criticality functions throughout and after the thermal exposure.

In 2003, the National Academy of Sciences (NAS) formed the Committee on the Transportation of Spent Nuclear Fuel and High-Level Radioactive Waste. The original purposes of this committee were to evaluate the risks and to identify key current and future technical and societal concerns with the transportation of SNF and high level radioactive waste in the USA. The principal finding from the NAS committee was that there were no fundamental technical barriers to the safe transport of SNF or high level radioactive waste.<sup>2</sup> In addition to this

<sup>1</sup>Center for Nuclear Waste Regulatory Analyses, Southwest Research Institute, San Antonio, TX, USA

<sup>2</sup>US Nuclear Regulatory Commission, Washington, DC, USA

\*Corresponding author, email Chris.Bajwa@nrc.gov

finding, the NAS committee indicated that the current international standards and US regulations, at the time of writing of the committee's report, are adequate to ensure that the transportation package would provide adequate protection over various transportation conditions. However, the NAS committee noted that various technical reports indicated that there were a very small number of severe accident conditions involving long duration fires that could potentially compromise the containment integrity of the package. The committee further recommended that the NRC conduct additional analyses of very long duration fire scenarios that bound accident conditions expected to occur under realistic conditions. Based upon the NAS committee's recommendation, the NRC has continued to evaluate the parameters associated with accident events that involved long duration severe fires. This includes the data reported here, which describe the frequency and trends of rail accidents involving long duration fires.

Several studies have looked at the probability of transportation accidents involving SNF over the past few decades. Some of these previous studies are listed in Table 1, which also compares the calculated railway accident rates between studies. Most of the data originate from the Federal Railroad Administration (FRA) database, which is a key source of railway transportation accident related data. A comparison of these previous reports, presented in Table 1, shows that the earlier studies estimated a much higher accident rate (i.e. one to six accidents per hundred thousand train miles) compared to the later studies (i.e. two to three accidents per million train miles). This is likely a result of railway regulation changes that have improved the safety of train travel over the past 30 years.

The purpose of the work described in this paper was to assess rail transportation accidents involving long duration fires. The first objective was to analyse and tabulate statistics for railway accidents in the USA, including the frequency of railway accidents involving a long duration fire. The second objective was to analyse railway accidents and determine possible trends associated with these accidents.

## Rail accident data

The data analysis in this paper focused on hazardous materials (HAZMAT) release accidents involving multiple cars to identify where a fire occurred. The focus of this paper is on HAZMAT data because of its availability and the assumption that the regulations for SNF transportation would be more stringent than those

for HAZMAT transport. This would lead to a conservative estimate of risk. The main sources of data used in this paper were based on the accident data developed by the FRA<sup>3</sup> and the HAZMAT data developed by the US Department of Transportation, the Pipeline and Hazardous Materials Safety Administration (PHMSA) and the Office of Hazardous Materials Safety.<sup>4</sup> Each year, the FRA collects data from more than 600 railroads, which it uses to:

- (i) effectively carry out its regulatory and enforcement responsibilities under the federal railroad safety statutes
- (ii) determine comparative trends of railroad safety
- (iii) develop hazard elimination and risk reduction programs that focus on preventing railroad injuries and accidents.

Unfortunately, the FRA database does not always indicate whether the accident occurred along with a fire, and additional information provided by the PHMSA database was required to examine whether HAZMAT was released and a fire resulted from the release of HAZMAT.

## Analysis of accident data

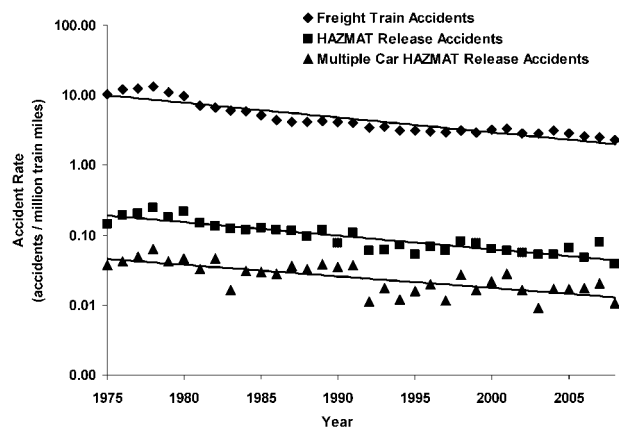
### Accident frequency calculations for all railway accidents

Different sources of railway accident data define the word 'accident' differently. In this paper, the term 'accident' is used to reflect where a single train derailed and where a train collided with an object (e.g. a backhoe left on the track by vandals) or another train.

The analysis results of the FRA data between 1975 and 2008 are shown in Table 2. The rates in this table are the number of accidents divided by the total freight train miles. For example, the rate for total freight train accidents in 1975 was 10.35 accidents per million train miles. As indicated in Fig. 1, the data show that the rate of accidents has trended downward over the past 25 years, which is consistent with the information presented in Table 1. The data review focused on multiple car accidents because these accidents will most likely lead to more severe fires due to the greater amount of hazardous materials involved when multiple rail cars are involved. These accidents, where HAZMAT was released from multiple cars, were cross-referenced to the PHMSA data to determine if a fire had occurred during the accident. Because the data for PHMSA were limited to dates between 1997 and 2008, only the accidents in this timeperiod were cross-referenced. The results of this

**Table 1 Comparison of train accident rates for reports of SNF transportation**

Source document	Source of data	Reported accident rate/(accidents/million train miles)
NRC, Final Environmental Statement on the Transportation of Radioactive Material by Air and Other Modes <sup>5</sup>	Severities of transportation accidents, SLA-74-001 1975	65.1
NRC, Re-examination of Spent Fuel Shipment Risk Estimates <sup>6</sup> and Shipping Container Response to Severe Highway and Railway Accident Conditions <sup>7</sup>	FRA rail data 1975-1982	12.1
US Department of Energy, Yucca Mountain EIS <sup>8</sup>	Association of American Railroads State Data 1994-1996	3.67
EPRI, Criticality Risks During Transportation of SNF <sup>9</sup>	FRA Rail Data 2000-2006	2.67



### 1 Summary of railway accidents from 1975 to 2008

cross-reference are shown in Table 3 and can be compared with the shaded data in Table 2.

As shown in Table 2, for accidents with release of HAZMAT, the total accident rate for the past 12 years (i.e. 0.06 accidents per million freight train miles) is ~60% of the total accident rate for the entire 34 years

(i.e. 0.10 accidents per million freight train miles). The single car and multiple car HAZMAT release accidents are shown separately in the table. The rates for these accidents show similar decreases in the last 12 years when compared to their accident rates over the last 34 years. The rate for multiple car HAZMAT release accidents involving a fire is shown in Table 3 and is ~0.003 accidents per million freight train miles, which is ~15% of the accident rate for multiple car HAZMAT release accidents over the same 12 years, as shown in Table 2.

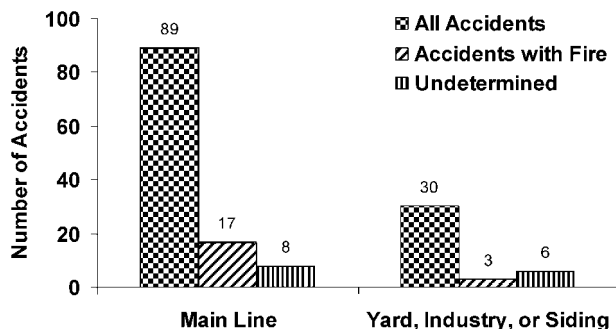
### Accident trends for all railway accidents

To understand the key trends associated with railway accidents that may lead to HAZMAT releases and a fire, the parameters associated with the railway accidents were examined for the FRA data collected during the time frame of 1997–2008. As shown in Fig. 2, 89 multiple car HAZMAT release accidents occurred on the main line (i.e. a track that is used for through trains), whereas 30 multiple car HAZMAT release accidents occurred off the main line (i.e. branch tracks or sidings). Of the 89 accidents occurring on the main line, 17 resulted in a fire.

**Table 2 Overall FRA railway accident data\***

Year	Freight train miles/million	Freight accidents with release of HAZMAT							
		Freight train accidents		Total accidents with release HAZMAT		Multiple cars			
		Number	Accident rate	Accident rate	Single car	Accident rate			
1975	570	5906	10.35	83	0.15	62	0.11	21	0.04
1976	585	7187	12.28	113	0.19	88	0.15	25	0.04
1977	566	7192	12.70	114	0.20	86	0.15	28	0.05
1978	568	7512	13.23	138	0.24	102	0.18	36	0.06
1979	577	6475	11.23	105	0.18	81	0.14	24	0.04
1980	542	5339	9.85	119	0.22	94	0.17	25	0.05
1981	511	3617	7.08	77	0.15	60	0.12	17	0.03
1982	433	2903	6.70	59	0.14	39	0.09	20	0.05
1983	422	2598	6.16	52	0.12	45	0.11	7	0.02
1984	448	2642	5.90	54	0.12	40	0.09	14	0.03
1985	431	2230	5.17	54	0.13	41	0.10	13	0.03
1986	428	1894	4.42	51	0.12	39	0.09	12	0.03
1987	439	1842	4.20	50	0.11	34	0.08	16	0.04
1988	460	1936	4.21	44	0.10	29	0.06	15	0.03
1989	469	1996	4.26	56	0.12	38	0.08	18	0.04
1990	460	1941	4.22	35	0.08	19	0.04	16	0.03
1991	436	1774	4.07	47	0.11	31	0.07	16	0.04
1992	448	1539	3.43	27	0.06	22	0.05	5	0.01
1993	464	1634	3.52	29	0.06	21	0.05	8	0.02
1994	495	1578	3.19	36	0.07	30	0.06	6	0.01
1995	506	1578	3.12	27	0.05	19	0.04	8	0.02
1996	507	1559	3.08	34	0.07	24	0.05	10	0.02
1997	512	1529	2.98	31	0.06	25	0.05	6	0.01
1998	520	1612	3.10	42	0.08	28	0.05	14	0.03
1999	542	1609	2.97	41	0.08	32	0.06	9	0.02
2000	549	1763	3.21	35	0.06	23	0.04	12	0.02
2001	538	1773	3.30	32	0.06	17	0.03	15	0.03
2002	547	1562	2.86	31	0.06	22	0.04	9	0.02
2003	561	1618	2.88	30	0.05	25	0.04	5	0.01
2004	584	1810	3.10	31	0.05	21	0.04	10	0.02
2005	597	1712	2.87	39	0.07	29	0.05	10	0.02
2006	624	1622	2.60	30	0.05	19	0.03	11	0.02
2007	586	1465	2.50	46	0.08	34	0.06	12	0.02
2008	565	1290	2.28	22	0.04	16	0.03	6	0.01
12 years	6725	19 365	2.88	410	0.06	291	0.04	119	0.02
All years	17 489	92 237	5.27	1814	0.10	1335	0.08	479	0.03

\*Accidents for the last 12 years (from 1997 to 2008) were analysed to determine if a fire occurred, as shown in Table 3.



**2 Multiple car HAZMAT release accidents from 1997 to 2008**

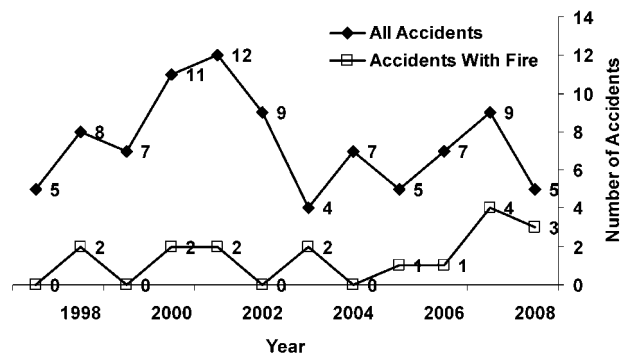
However, there were eight accidents that did not have enough detail to determine whether a fire had or had not occurred. Similarly, for the 30 accidents occurring off the main line, three resulted in a fire, whereas six did not have enough information to determine whether a fire had occurred.

As shown in Fig. 3, <25% (i.e. 21 of 89) of the main line accidents occurred in the last 3 years (i.e. 2006–2008); however, almost half (i.e. eight of 17) of the HAZMAT release accidents involving a fire occurred in the last 3 years. On average, for the 12 years from 1997 to 2008, between seven and eight multiple car HAZMAT release accidents occurred per year, and the number of accidents for 2007 and 2008 fell just above or below the average (i.e. nine for 2007 and five for 2008). Assuming that all of the eight undetermined accidents resulted in a fire, then for the 12 years from 1997 to 2008, roughly two multiple car HAZMAT release accidents resulted in a fire per year. For the years 2007 and 2008, the number of these fire accidents was about twice the average (i.e. four for 2007 and three for 2008).

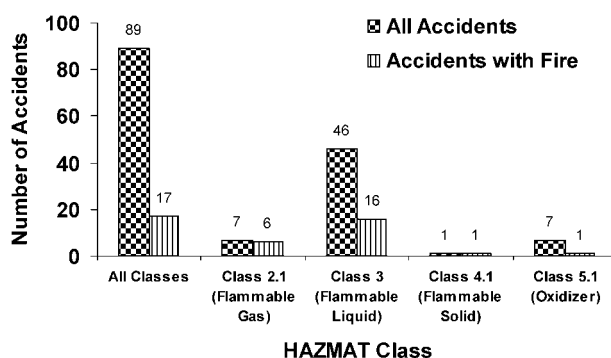
The flammable material and oxidiser HAZMAT classes for the 89 accidents occurring on the main line are shown in Fig. 4. This figure only shows the numbers associated with flammable material and oxidisers and does not include other classes of hazardous material that make up the overall 89 accidents. As shown in Fig. 4, class 3 HAZMAT (i.e. flammable liquid) was released in more than half of the 89 accidents (i.e. 46 out of 89) and in all but one of the accidents that resulted in a fire (i.e. 16 out of 17). In some accidents, such as the one that occurred on October 20, 2006, in New Brighton, PA, USA, multiple cars released flammable liquid (~20 cars

**Table 3 Accident data for accidents with release of HAZMAT from multiple cars involving fire**

Year	Freight train miles/million	Total	Accident rate
1997	512	0	0.000
1998	520	2	0.004
1999	542	0	0.000
2000	549	2	0.004
2001	538	2	0.004
2002	547	0	0.000
2003	561	2	0.004
2004	584	1	0.002
2005	597	2	0.003
2006	624	1	0.002
2007	586	5	0.009
2008	565	3	0.005
12 years	6725	20	0.003



**3 Number of mainline multiple car HAZMAT release accidents and multiple car HAZMAT release accidents resulting in fire by year**

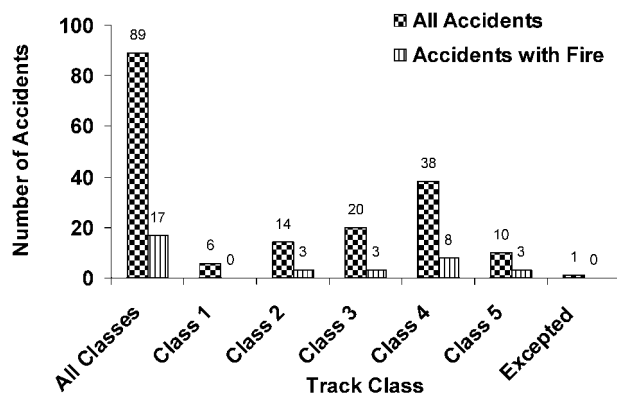


**4 Number of HAZMAT release accidents from 1997 to 2008 that occurred on main line showing four HAZMAT classes involved: in some accidents, release involved material from more than one HAZMAT class**

released an estimated 485 278 gallons of ethanol).<sup>10</sup> In the single fire accident in Fig. 4, for which staff did not identify a class 3 HAZMAT release, the release involved class 4.1 HAZMAT (i.e. flammable solid) and occurred on December 18, 2000, in Plymouth, MN, USA.<sup>3</sup> In this accident, ~19 000 gallons of molten sulphur was released from six cars. As shown in Fig. 4, class 2.1 HAZMAT (i.e. flammable gas) was released in seven accidents, and a fire resulted in six of the seven accidents from 1997 to 2008 on the main line. In all six of these accidents, flammable gas was released with flammable liquid. Figure 4 also shows seven accidents in which class 5.1 HAZMAT (i.e. oxidiser) was released from 1997 to 2008 on the main line. The one accident that resulted in a fire occurred in conjunction with a release of ~57 171 gallons of flammable liquid. The majority (i.e. 85 of 89) of multiple car HAZMAT release accidents that occurred on the main line involved a derailment. However, four accidents involved an impact or collision. Three of the four impacts or collision

**Table 4 Maximum speed for freight trains by track class<sup>3</sup>**

Track class	Maximum speed/mph
Excepted	<10
1	10
2	25
3	40
4	60
5	80



5 Number of multiple car HAZMAT release accidents from 1997 to 2008 that occurred on main line separated by track class

accidents resulted in a fire, whereas 14 of the 85 derailment accidents resulted in a fire.

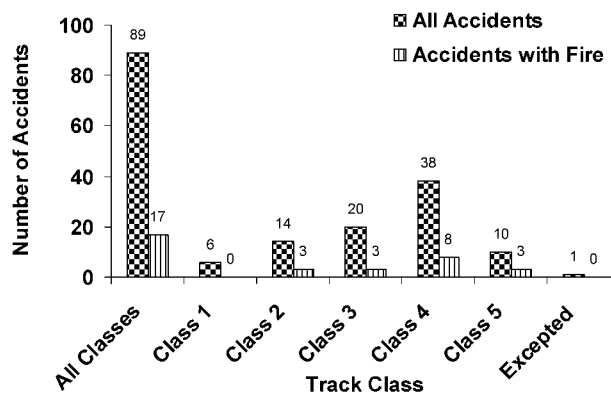
The maximum allowed freight train speed in the USA increases with increasing track class, as shown in Table 4.<sup>3</sup>

Figure 5 shows that the number of multiple car HAZMAT release accidents increased from class 1 to 4 track but then decreased for class 5 track. Figure 5 also shows the multiple car HAZMAT release accidents that occurred on the main line separated by track class. As shown in this figure, of the 89 accidents occurring on the main line, ~43% (i.e. 38 of 89) occurred on class 4 track. Assuming none of the eight undetermined accidents resulted in a fire, then almost half of the accidents (i.e. eight of 17) involving a fire occurred on class 4 track. The remaining accidents involving a fire were divided evenly among class 2, 3 and 5 track. Three accidents occurred on each of these three classes of track.

Figure 6 shows the number of multiple car HAZMAT release accidents that occurred from 1997 to 2008 on the main line separated by train speed. In this figure, speed was arbitrarily separated into 20 mph groups, with the highest speed for the last group corresponding to the maximum freight train speed for class 5 track. As shown in Fig. 6, for the 89 accidents occurring on the main line, ~40% (i.e. 36 of 89) occurred between 21 and 40 mph, with ~31% (i.e. 28 of 89) occurring at higher speeds between 41 and 60 mph. For accidents involving a fire, however, a greater percentage of the accidents occurred in the higher speed range (i.e. 41–60 mph). Almost half of them (i.e. eight of 17) occurred from 41 to 60 mph, whereas only 35% (i.e. six of 17) occurred in the lower speed range of 21–40 mph.

### Frequency calculations for accidents involving severe, long duration fires

To evaluate the frequency of severe fire accidents that have occurred in the past 12 years, a severe fire accident must be defined. In lieu of the quantitative identification of a severe fire, the analysis described in this paper attempted to define a severe fire using two criteria. The first criterion was that a railcar must have been substantially engulfed in a fire that persists for an extended period of time. The second criterion was that the principal source of fuel for the substantially engulfing fire must have been derived from another railcar. The purpose of this second criterion was to restrict the term



6 Number of multiple car HAZMAT release accidents from 1997 to 2008 that occurred on main line separated by speed

‘severe fire’ to those fires that could have affected SNF packages (implicitly assuming that the packages and their transporting railcars do not provide fuel to a fire) and exclude railcar fires that were self-fuelled. Thus, severe fires are not just large fires, but fires that have the capacity to potentially affect SNF packages.

As a consequence, using rail accident reports as a basis to classify rail fires often required the use of inferences rather than strict descriptions, and these inferences may have been interpreted subjectively. However, as a general guideline for this analysis:

- (i) ‘extended period of time’ was interpreted as a duration that appeared to have lasted at least 30 min or that was documented as lasting longer than 30 min
- (ii) ‘substantially engulfed’ was interpreted as a fire that optically engulfs (or could have optically engulfed) at least 30% of the surface area of a non-fuel source bearing railcar or damage from the fire appeared to have affected at least 30% of the surface area of a non-fuel source bearing railcar
- (iii) ‘principal source of fuel’ was interpreted as meaning that, at some point in time, the fire was fuelled by materials from another railcar. This point arose from an occasional ambiguity in determining whether a railcar spawned a secondary fire as a result of a fire or was the initial source of a fire.

As described in the previous section, on average for the total number of railway accidents, only a few were identified as having potentially severe fires. The process of identifying those accidents with severe fires began by identifying and focusing attention on accidents that involved the release of HAZMAT from multiple railcars and thus were potentially capable of supporting a severe fire. As described, this reduced the number of candidate accidents to just 119 accidents (i.e. 89 accidents on the main line and 30 accidents off the main line) that potentially had a sufficient amount of fuel to support a severe fire. Of the 89 accidents on the main line, just 17 involved a fire. Of the 30 accidents off the main line, just three involved a fire.

The 20 rail accidents involving a fire were initially identified through a search of the FRA database. After identifying these accidents, details about these accidents were then derived from available National Transportation



Safety Board reports or briefs. However, of the 20 accidents initially identified, reports were not found for several accidents. These missing reports were either pending (for recent accidents) or simply not available through the National Transportation Safety Board electronic publications for railroad accidents. Consequently, these events could not be evaluated to determine fire severity nor were they included in the frequency calculation and trend analysis of severe accidents. Of the 20 initially identified accidents, accident reports were found for 12. Of these 12 accidents, nine (i.e. eight on the main line and one off the main line) were classified as a severe accident based on the criteria previously discussed. The severe accidents were further classified as either widespread severe fire accidents (i.e. 10 or more railcars were affected by the severe fire) or local severe fire accidents (i.e. fewer than 10 railcars were affected by the severe fire). The calculated frequency for the 12 year period, shown in Table 5, is roughly 0.001 severe fire accidents per million freight train miles of railway travel or about one severe accident per every one billion train miles. This is ~0.046% of the total accident rate (i.e. 2.88 accidents per million freight train miles).

### Trends for accidents involving a severe fire

As indicated previously, only two of the 20 accidents were designated as a widespread railcar severe fire. The first accident was on October 20, 2006, in New Brighton, PA, USA, and the second was on 27 May 2000 was in Eunice, LA, USA. Both derailments involved track failure in the vicinity of a bridge. For the accident in New Brighton, PA, USA, the rail fractured under the load of the train from an undetected defect.<sup>10</sup> For the accident in Eunice, LA, USA, the rails were misaligned due to broken joint bars.<sup>11</sup> Both trains had several HAZMAT cars, and many of these cars released HAZMAT. These accidents are characterised by trains that had a large fraction of its cars transporting HAZMAT and in which a significant number of cars were damaged in the derailment and ensuing fire. Many of the damaged cars released HAZMAT, and a significant amount of that material was flammable liquid. Other parameters associated with these accidents do not appear to be significantly different when compared to other accidents involving a fire. The accidents occurred on class 3 or 4 track, where nearly 65% of the accidents involved a fire (i.e. 11 of 17). In addition, these two accidents occurred at speeds of <40 mph, where almost half of the accidents (i.e. eight of 17) involving a fire occurred.

**Table 5 Severe fire railway accident data**

Year	Freight train miles/million	Severe fire events		
		Widespread	Local	Rate
1997	512	0	0	0
1998	520	0	0	0
1999	542	0	0	0
2000	549	1	0	0.002
2001	538	0	1	0.002
2002	547	0	0	0
2003	561	0	1	0.002
2004	584	0	1	0.002
2005	597	0	1	0.002
2006	624	1	0	0.002
2007	586	0	3	0.005
2008	565	0	0	0
Total	6725	9		0.001

There were only six severe fire accidents where a minimal number of cars were exposed to fire.<sup>11-16</sup> Five of the six accidents involved a derailment, and the remaining one was a head-on collision. There were some similarities in the accidents. Four of the accidents occurred at speeds of >40 mph, where more than half of the accidents (i.e. nine of 17) involving a fire occurred. These same accidents involved a HAZMAT release from five to seven cars. These same four accidents involved the release of class 3 HAZMAT (i.e. flammable liquid). Three of the four accidents also involved the release of class 2.1 HAZMAT (i.e. flammable gas). All four accidents resulted in the release of thousands of gallons of flammable liquid or flammable gas. The fifth accident, which occurred at a lower speed, was on class 2 track and involved a release from a fewer number of cars. This fifth accident was different because it occurred in a tunnel, which may have created a constrained environment and contributed to causing a severe fire.

Because of the limited amount of data (i.e. nine accidents over a 12-year period), it is difficult to determine trends for railway accidents involving a severe fire. However, the severe fire accidents (both widespread and local) are generally characterised by derailments in which flammable liquid or gas was released from several cars (i.e. five or more cars). In general, these accidents were caused by rail failure. They generally occurred at speeds from just below 40 mph to just below 50 mph.

### Conclusions

Based on the NAS recommendations, the NRC is identifying the types of accident parameters that could impact the rail transport of SNF. The objective of the work described in this paper was to review available railway accident statistics and assess possible trends associated with railway severe fire accidents. The results of this analysis suggest that in the previous 12 years, the rail accident rate is roughly 2.88 accidents per million freight train miles. This falls within the range of the previous studies by the EPRI and the US Department of Energy, which calculated rates between two and four accidents per million train miles.

The work described in this paper further examined the frequency of accidents involving a fire and release of hazardous material. The paper focused on accidents where multiple car releases of HAZMAT that could serve as a source of fuel occurred because these types of accidents would more likely result in an SNF transportation package being exposed to a fire. The results, based on record available for review, indicated\* that the frequency for multiple car release of HAZMAT resulting in a fire is 0.003 accidents per million train miles or one accident per 300 million train miles. These fire related accidents were further separated into two categories: those considered to be a severe fire, which was based on the fire being able to partially engulf a railcar for an extended period, and those where the source of fuel for the engulfing fire was derived from another railcar. With these criteria in place, the frequency for a fire severe accident was calculated at

\* It is not expected that factoring in accidents for which specific information was not available would have a significant impact on the calculated frequencies.

0-001 accident per million train miles or about one accident per 1 billion train miles.

To understand some of the factors that may lead to a railway accident involving a severe fire, the accident trends were evaluated for severe fires. Although there are limited data (i.e. due to only nine accidents during the last 12 years that were judged to be in the severe fire category), some trends of the data were determined. The railway severe fire accidents were generally characterised by derailments where a flammable liquid or gas was released from several cars (i.e. five or more). The speeds for these accidents were typically from ~40 to ~50 mph.

Based on the analysis of the accident data, a very small frequency would cause severe fire accidents that could affect an SNF transportation package. Limiting the transport of SNF packages to trains without any flammable liquid or gas (i.e. dedicated trains) would likely reduce the frequency even more.

## Acknowledgements

This paper describes work performed by the Center for Nuclear Waste Regulatory Analyses (CNWRA) and its contractors for the NRC under contract no. NRC-02-07-006. The activities reported here were performed on behalf of the NRC Office of Nuclear Material Safety and Safeguards, Division of Spent Fuel Storage and Transportation. This paper is an independent product of the CNWRA and does not necessarily reflect the view or regulatory position of the NRC. The NRC staff views expressed herein are preliminary and do not constitute a final judgment or determination of the matters involving transportation of SNF.

## References

1. 'Packaging and transportation of radioactive material', Part 71, Title 10, *Code of Federal Regulations*, US Nuclear Regulatory Commission, Washington, DC, USA, 2011.
2. National Research Council: 'Going the distance? The safe transport of spent nuclear fuel and high-level radioactive waste in the United States'; 2006, Washington, DC, The National Academies Press.
3. Federal Railroad Administration Office of Safety Analysis: 'FRA office of safety analysis web site', <http://safetydata.fra.dot.gov/officeofsafety/> (accessed 2 February 2010).
4. Office of Hazardous Materials Safety: 'Incident reports database search', <https://hazmatonline.phmsa.dot.gov/IncidentReportsSearch/> (accessed 2 February 2010).
5. 'Final environmental statement on the transportation of radioactive material by air and other modes', NUREG-0170, US Nuclear Regulatory Commission, Washington, DC, USA, 1977.
6. 'Reexamination of spent fuel shipment risk estimates', NUREG/CR-6672, US Nuclear Regulatory Commission, Washington, DC, USA, 2000.
7. 'Shipping container response to severe highway and railway accident conditions', NUREG/CR-4829, US Nuclear Regulatory Commission, Washington, DC, USA, 1988.
8. 'Final environmental impact statement for a geologic repository for the disposal of spent nuclear fuel and high-level radioactive waste at Yucca Mountain, Nye County, Nevada', DOE/EIS-0250, Department of Energy, Washington, DC, USA, 2002.
9. A. Dykes: 'Criticality risks during transportation of spent nuclear fuel, revision 1', Report no. 1016635, Electric Power Research Institute, Palo Alto, CA, USA, 2008.
10. 'Railroad accident report: derailment of Norfolk Southern Railway Company Train 68QB119 with release of hazardous materials and fire New Brighton, Pennsylvania, October 20, 2006', RAR-08-02, National Transportation Safety Board, Washington, DC, USA, 2008.
11. 'Railroad accident report derailment of union pacific railroad train QFPLI-26 at Eunice, Louisiana, on May 27, 2000', RAR-02-03, National Transportation Safety Board, Washington, DC, USA, 2002.
12. 'Railroad accident brief derailment at Painesville, Ohio, on October 10, 2007', RAB-09-02, National Transportation Safety Board, Washington, DC, USA, 2009.
13. 'Railroad accident brief derailment at Oneida, New York, on March 12, 2007', RAB-08-05, National Transportation Safety Board, Washington, DC, USA, 2008.
14. 'Federal Railroad Administration Office of Safety Headquarters Assigned Accident Investigation Report – CSX Transportation, Shepherdsville, Kentucky, January 16, 2007', HQ-2007-03, Federal Railroad Administration Office of Safety Headquarters, Washington, DC, USA, 2008.
15. 'Railroad accident report: derailment of Canadian national freight train M33371 and subsequent release of hazardous materials in Tamaroa, Illinois, February 9, 2003', RAR-05-01, National Transportation Safety Board, Washington, DC, USA, 2005.
16. 'Railroad accident brief: CSX freight train derailment and subsequent fire in the Howard Street Tunnel in Baltimore, Maryland, on July 18, 2001', RAB-04-08, National Transportation Safety Board, Washington, DC, USA, 2004.