

R 77 W

R 76 W

T 45 N

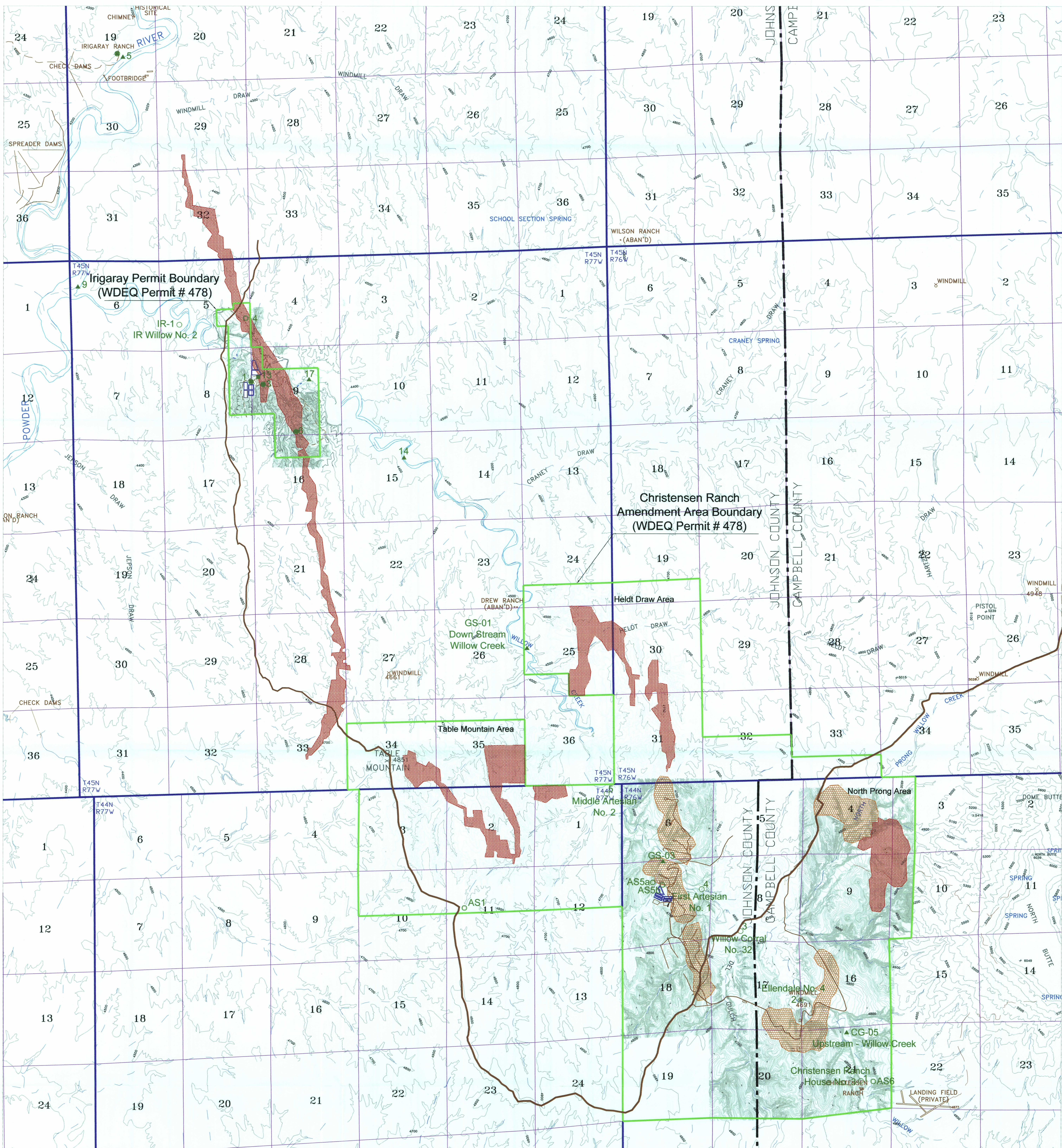
T 45 N

T 44 N

T 44 N

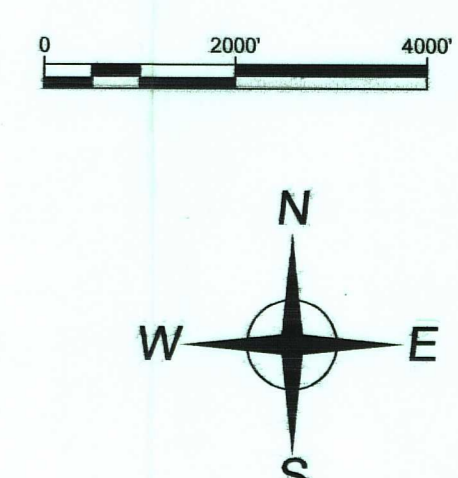
R 77 W

R 76 W



LEGEND

- Wellfield Access Roads
- Haul Road
- Wellfield Area - Existing
- Wellfield Area - Future
- Evaporation Ponds
- Topsoil Stockpile
- Air Sample Location (Radon and Particulate)
- Air Sample Location (Radon and Particulate)
- Vegetation Sample Location
- Soil Sample Location
- Direct Radiation Monitor Location
- Air Sample Location (Radon)
- Vegetation Sample Location
- Soil Sample Location
- Direct Radiation Monitor Location
- Stock & Domestic Well Sample Location
- Regional Groundwater Monitoring Location
- Upstream & Downstream Surface Water Sample Location



uraniumone
investing in our energy
907 North Poplar St., Suite 280, Casper, WY 82601 307-234-8235

**Irigaray & Christensen Ranch
Environmental Monitoring
Station Locations**

Wyoming
Johnson and Campbell Counties

Date: August 2009	By: CMI August 2009	Checked:	Sheet:
Rev. No. 1	Description: Updated 2009 CMI Original for 2010	Date: August, 2010	By: CEO-U1
1	Moved location of GS-01	August, 2010	CEO-U1

01001