



26 July 2010

Nuclear Regulatory Commission
Materials Licensing Branch
US NRC, Region III
2443 Warrenville Road, Suite 210
Lisle, IL 60532-4352
Attn: Kevin Null

RE: License Amendment Request –License No. 24-13365-01, Change of Release Limits on Building Surfaces

Mr. Null:

ABC Laboratories would like to amend our current NRC License #24-13365-01 to increase our release limits for total and removable contamination on building surfaces from our current limit of 200 dpm/100 cm² to the following levels:

Screening levels for H-3	1.2E8 dpm/100 cm ² (total)
Screening levels for C-14	3.7E6 dpm/100 cm ² (total)

These limits are in line with the limits set forth in NUREG-1757 Consolidated Decommissioning Guidance, Volume 2, Revision 1, dated September 2006. As prescribed in the above document, removable contamination will constitute only 10% of any of those total values.

We will continue to utilize our current release limits of 200 dpm/100 cm² for equipment and other materials.

If you have any further questions regarding this request, please feel free to contact me at your earliest convenience. Thank you for your consideration in this matter.

Sincerely,

Elaine McCoy
Vice President Human Resources and EH&S
Interim Radiation Safety Officer

RECEIVED JUL 29 2010



July 15, 2010

Nuclear Regulatory Commission
Materials Licensing Branch
US Nuclear Regulatory Commission, Region III
2443 Warrenville Road, Suite 210
Lisle, IL 60532-4352

ATTN: Kevin Null

RE: License Amendment Request – License No. 24-13365-01, Change of Use Building E

Mr. Null:

Analytical Bio-Chemistry Laboratories is requesting an amendment to our license to allow for the storage and use of radioactive compounds, and the storage of radioactive active waste, primarily ^{14}C , in Building E. Currently the dock area in Bldg E is the only named location within our license.

The Environmental Fate function is relocating from Building J to Building E. This group uses small quantities of ^{14}C to conduct their studies. Following are the laboratories where small quantities of ^{14}C will be stored or used: 819, 820, 846, 848, 851, 852, 854, 862, 8105. The floor plan for Building E is attached.

You received notification of our intention to cease waste storage operations in Building F. Waste storage will be relocated to Building E to a high hazard storage area (8101.1 on the floor plan), with separate locked entry and limited access. Following are the specifications of the new waste storage area:

- o High Hazard (HH) waste area (Room # 8101.1) - 1,600 SF separated storage structure (stand alone) within the building footprint.
 - Separate structure of 6" tilt-up wall
 - Room's lighting fixtures are blast and arc resistant.
 - Tilt-up panels are blast resistant to 100 psf (increased reinforcing),
 - There are 4 blast relief panels release at 10psf, and a blast resistant door to 100 psf.
 - A 6,000-gallon underground storage tank is outside the HH room to contain any fire protection water or spills that may be used. Multiple drains in the HH Room drain fire protection water for 20 minutes of usage into the storage tank.
 - Floor is epoxy coated.

Our Radiation Safety Committee has reviewed and approved the new use of radioactive material in the designated laboratories in Building E. The Committee also approved the relocation of the radioactive waste storage area from Building F to Building E.



Analytical Bio-Chemistry Laboratories, Inc.

*Celebrating four decades
of product development expertise*

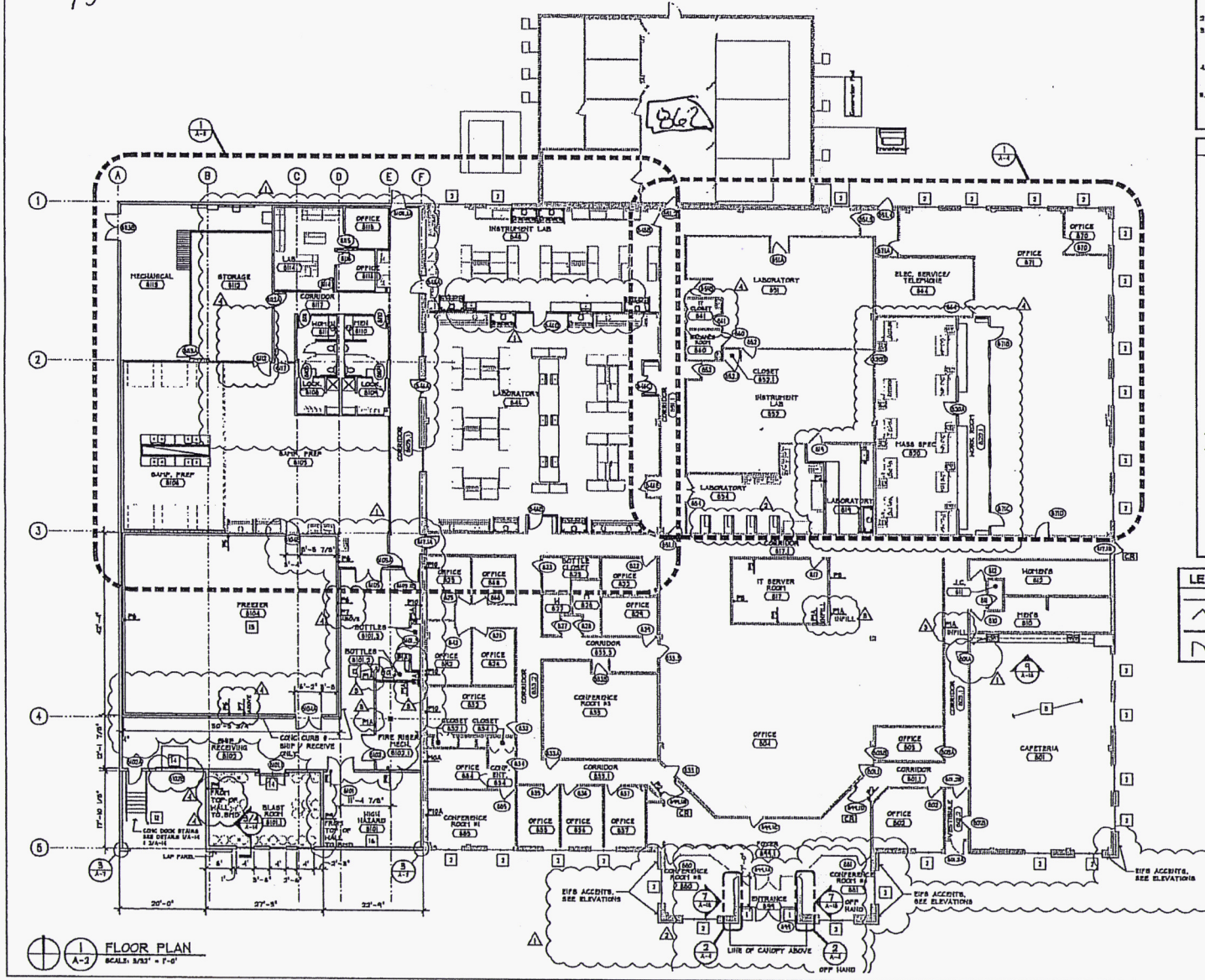
If you have any questions or need further information, please feel free to contact me at 573-777-6360.

Sincerely,

A handwritten signature in cursive script that reads 'Elaine McCoy'.

Elaine McCoy
Vice President Human Resources and EH&S
Interim Radiation Safety Officer

Bldg E



GENERAL NOTES

- CONTRACTOR TO VERIFY ALL DIMENSIONS AND CONDITIONS SHOWN ON THE DRAWINGS AT THE JOB SITE AND NOTIFY ARCHITECT AND C.H. ON ANY OMISSIONS, DISCREPANCIES, AND/OR CONFLICTS BEFORE PROCEEDING WITH THE WORK.
- ALL DIMENSIONS ARE TO FACE OF PARTITIONS.
- FIRE RETARDANT BLOCKING SHALL BE PROVIDED IN ALL HALLS AS REQUIRED BY CODE AND AS REQUIRED OR RECOMMENDED FOR CABINETS & MILLWORK, TOILET PARTITIONS, TOILET ACCESSORIES, HANDRAILS, ETC.
- CABINETS, MILLWORK AND EQUIPMENT SUPPLIERS SHALL FIELD VERIFY ALL DIMENSIONS PRIOR TO FABRICATION.
- USE TAPABLE METAL CORNER BEADS AT ALL GYPSUM BOARD CORNERS.

KEYNOTES

- NEW CLEAR ANODIZED ALUMINUM STOREFRONT GLAZING SYSTEM WITH 1" INSULATED GLASS IN SYSTEM AND DOORS.
- NEW CLEAR ANODIZED ALUMINUM GLAZING SYSTEM WITH 1" INSULATED GLASS.
- PURGE HOOD (INCLUDED IN CONTRACT) - LABORATORY 4' X 8'
- LAB TABLES BY COOPER (NIC) SHOWN FOR REFERENCE ONLY.
- ROOF ACCESS (SHIP'S LADDER W/ OVERSIZED ROOF HATCH), SEE SHEET A-18
- LAB EQUIPMENT BY OTHER (NIC) SHOWN FOR REFERENCE ONLY.
- WALK-IN PURGE HOOD
- CEILING SERVICE CARRIER ABOVE LAB TABLES. PROVIDE GAS INSULATED THINWALL POWER CONNECTIONS, POWER & DATA CONNECTIONS.
- BOROMULITE WITH 1/2" TEMPERED GLASS, SET RILL AT 42" A.F.F.
- NEW ALUMINUM BORO-LITE. PROVIDE 1/2" CLEAR TEMPERED GLASS IN SYSTEM. WALL TO HAVE 5/8" GYP BOARD ON 3 5/8" HTL STUDS UP TO 34" A.F.F. GLASS TO EXTEND FROM 34" A.F.F. TO 4" BELOW CEILING (4'-4" A.F.F.)
- NOT USED
- STEEL PIPE BOLLARD, RE. TO DETAIL 5/A-15
- COAT RACK AND SHELF, RE. TO ELEVATION 5/A-16
- 4' X 8'-0" TRIBUCHI DRINK, RE. TO PLUMB DRAWINGS
- FREEZER SHALL CONSIST OF A CONCRETE FLOOR WITH ELECTRIC WIRE HEAT TRACE, AND INSULATED METAL PANEL WALLS AND CEILING.

LEGEND

- SHADED AREA DESIGNATES EXISTING BUILDING WHERE NO WORK SHALL BE DONE
- EXISTING HALL TO REMAIN
- EXISTING DOOR TO REMAIN
- NEW SCHEDULED PARTITION
- NEW SCHEDULED DOOR AND FRAME

FLOOR PLAN
SCALE: 3/32" = 1'-0"

CONSULTING ENGINEERS
 STRUCTURAL ENGINEERING
 ARCHITECTURAL ENGINEERING
 MECHANICAL ENGINEERING
 ELECTRICAL ENGINEERING
 PLUMBING ENGINEERING
 SANITARY ENGINEERING
 CIVIL ENGINEERING
 ENVIRONMENTAL ENGINEERING
 GEOTECHNICAL ENGINEERING
 SURVEYING ENGINEERING
 METEOROLOGICAL ENGINEERING
 AERONAUTICAL ENGINEERING
 CHEMICAL ENGINEERING
 INDUSTRIAL ENGINEERING
 AGRICULTURAL ENGINEERING
 MARINE ENGINEERING
 MINING ENGINEERING
 METALLURGICAL ENGINEERING
 NUCLEAR ENGINEERING
 PETROLEUM ENGINEERING
 TRANSPORTATION ENGINEERING
 WATER RESOURCES ENGINEERING
 WIND ENGINEERING
 POLYMER ENGINEERING
 FOOD ENGINEERING
 FIBER ENGINEERING
 AEROSPACE ENGINEERING
 ACOUSTICAL ENGINEERING
 ENVIRONMENTAL ENGINEERING
 OCCUPATIONAL SAFETY AND HEALTH ENGINEERING
 SAFETY ENGINEERING
 SYSTEMS ENGINEERING
 THERMAL ENGINEERING
 TRANSPORTATION ENGINEERING
 WIND ENGINEERING

CONTRACTOR
ARCO
 1000 EAST ARCADE
 COLUMBIA, MISSOURI 65201
 (314) 435-1100

ARCHITECT
ARCO
 1000 EAST ARCADE
 COLUMBIA, MISSOURI 65201
 (314) 435-1100

CONSTRUCTION DOCUMENTS FOR
ARCO
 BUILDING E
 7300 EAST ARCADE LANE
 COLUMBIA, MISSOURI 65202

JOB NO: 1
 80014
 DRAWN BY: LWY
 ISSUE DATE: 10-29-69

REVISIONS:
 1 11.10.69
 2 11.15.69
 3 11.15.69
 4 11.15.69

SHEET NUMBER
 A-2

8101.1 - Waste
 848 -
 846 -
 8105 -
 851
 852
 854
 819 820

862
 - stability



July 14, 2010

Nuclear Regulatory Commission
Materials Licensing Branch
US Nuclear Regulatory Commission, Region III
2443 Warrenville Road, Suite 210
Lisle, IL 60532-4352

ATTN: Kevin Null

RE: Notification of the Ceasing of Activity in Building D

Mr. Null:

At the time Analytical Bio-Chemistry Laboratories made the decision to cease active use of Building D, we were unaware of the 60 day requirement to notify the NRC. At this time we are notifying you we have ceased active use of Building D. The decision to cease active use was made on November 16, 2009. Building D remained in operation until June 14, 2010.

If you have any questions or need further information, please feel free to contact me at 573-777-6360.

Sincerely,

A handwritten signature in blue ink, appearing to read 'Elaine McCoy', written in a cursive style.

Elaine McCoy
Vice President Human Resources and EH&S
Interim Radiation Safety Officer

From: Origin ID: COUA (573) 777-6040
 Christy Stogsdill
 ABC Labs
 7200 E ABC Lane
 Columbia, MO 65202



Ship Date: 28JUL10
 ActWgt: 1.0 LB
 CAD: 2281399/INET3060

Delivery Address Bar Code



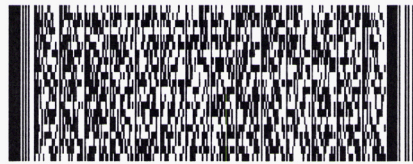
Ref #
 Invoice #
 PO #
 Dept # 710

SHIP TO: (630) 829-9500 **BILL SENDER**
Kevin Null
Nuclear Regulatory Commission
2443 WARRENVILLE RD STE 210

LISLE, IL 60532

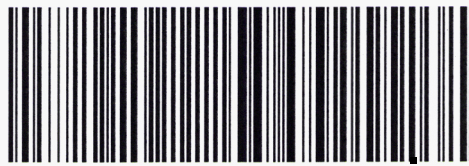
TRK# 7988 9282 1343
 0201

THU - 29 JUL A1
 STANDARD OVERNIGHT



60532
 IL-US
 ORD

NT ENLA



08019807/BA24

After printing this label:

1. Use the 'Print' button on this page to print your label to your laser or inkjet printer.
2. Fold the printed page along the horizontal line.
3. Place label in shipping pouch and affix it to your shipment so that the barcode portion of the label can be read and scanned.

Warning: Use only the printed original label for shipping. Using a photocopy of this label for shipping purposes is fraudulent and could result in additional billing charges, along with the cancellation of your FedEx account number.

Use of this system constitutes your agreement to the service conditions in the current FedEx Service Guide, available on fedex.com. FedEx will not be responsible for any claim in excess of \$100 per package, whether the result of loss, damage, delay, non-delivery, misdelivery, or misinformation, unless you declare a higher value, pay an additional charge, document your actual loss and file a timely claim. Limitations found in the current FedEx Service Guide apply. Your right to recover from FedEx for any loss, including intrinsic value of the package, loss of sales, income interest, profit, attorney's fees, costs, and other forms of damage whether direct, incidental, consequential, or special is limited to the greater of \$100 or the authorized declared value. Recovery cannot exceed actual documented loss. Maximum for items of extraordinary value is \$500, e.g. jewelry, precious metals, negotiable instruments and other items listed in our ServiceGuide. Written claims must be filed within strict time limits, see current FedEx Service Guide.