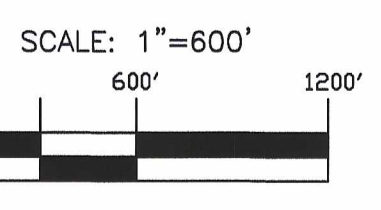


B 755AM
 B 756AM
 B 757AM

PERMIT UNIT BOUNDARY



NICHOLS RANCH ISR PROJECT
EXHIBIT D5-22
HANK UNIT
"C" SAND ISOPACH

By: S.M.F.	Date: 4-28-2008
Datum: 4901 UTM13E Wyo	Revision Date: 9-23-2009
Scale: 1"=600'	Contour Interval: 10 FEET
DWG#:	Exhibit Number: D5-22

D-01

U:\Geology\Drawing\Uranerz\EXHIBIT D5-22\HANK ISOPACH SAND C.dwg, 1/14/2010 4:22:40 PM