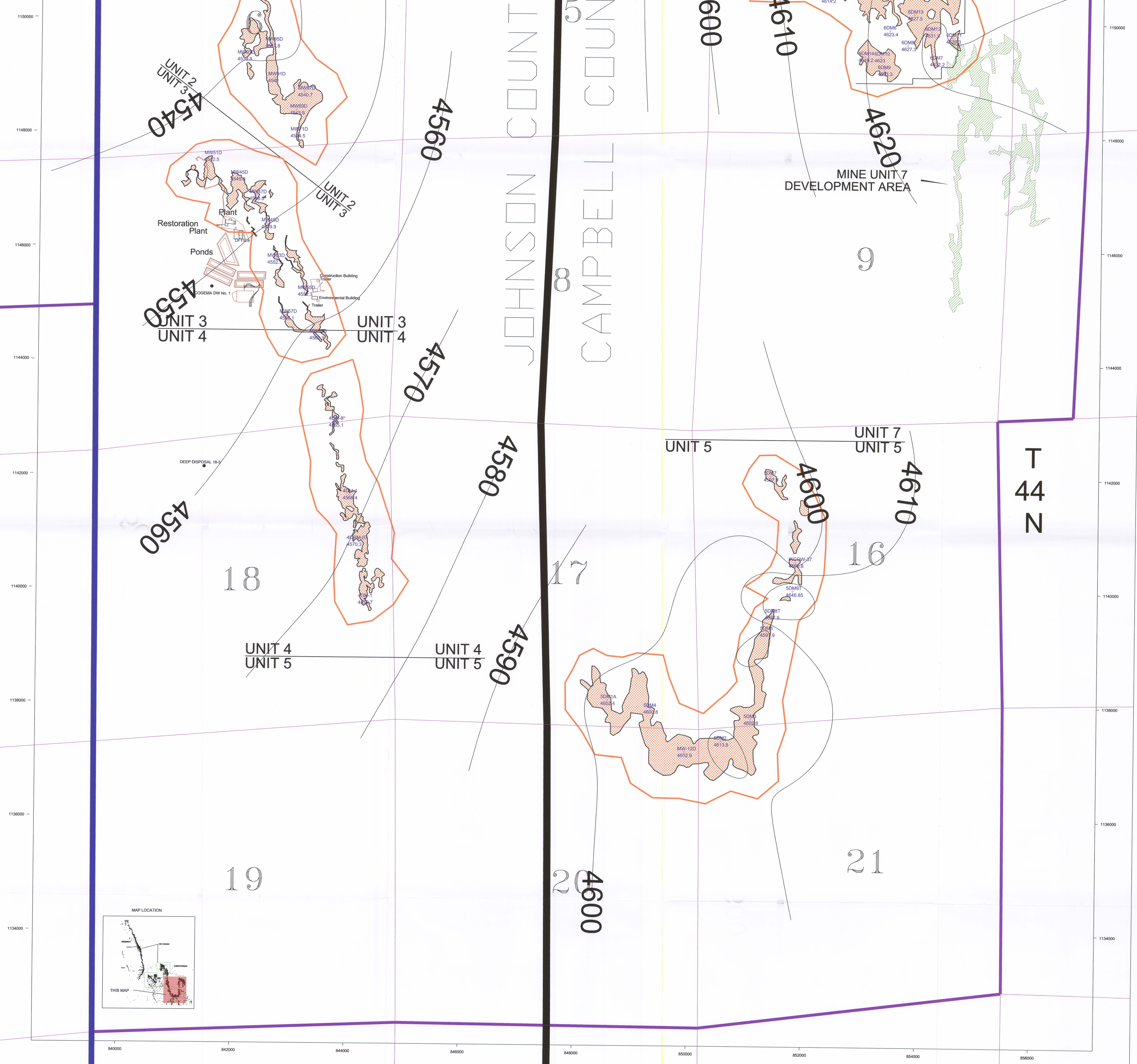


T45N R77W
T45N R76W
T44N R77W
T44N R76W

R 76 W

CAMPBELL COUNTY
JOHNSON COUNTY



UNIT 2
UNIT 3
4540

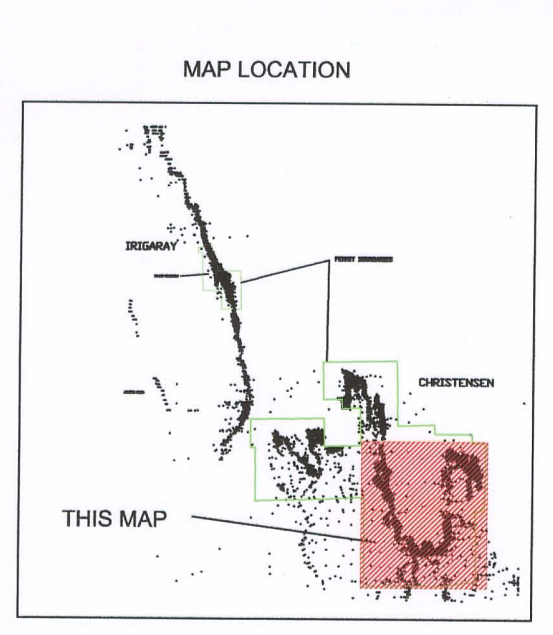
UNIT 3
UNIT 4
4550

UNIT 4
UNIT 5

UNIT 4
UNIT 5

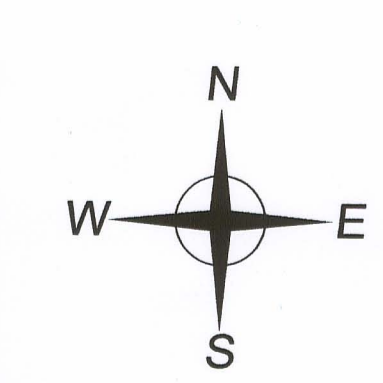
UNIT 5
UNIT 7
UNIT 5
4610

MINE UNIT 7
DEVELOPMENT AREA



LEGEND

- PERMIT BOUNDARY
- SECTION LINES
- Well #
- Well
- Piezometric Elevation
- 10' Piezometric Contours



AREVA **COGEMA Mining, Inc.**
Christensen Project

Deep Zone Piezometric Map
of Mine Units 2 through 6
Permit to Mine No. 478
Piezometric Levels Taken June 2009

Geology: Enviro: L. Arbogast
Drafting: RMO
Date: 7-13-2009
Revision:

State: Wyoming County: Johnson
Scale: 1"=400'
Drawing ID: CR Deep Zone.dwg

D-05