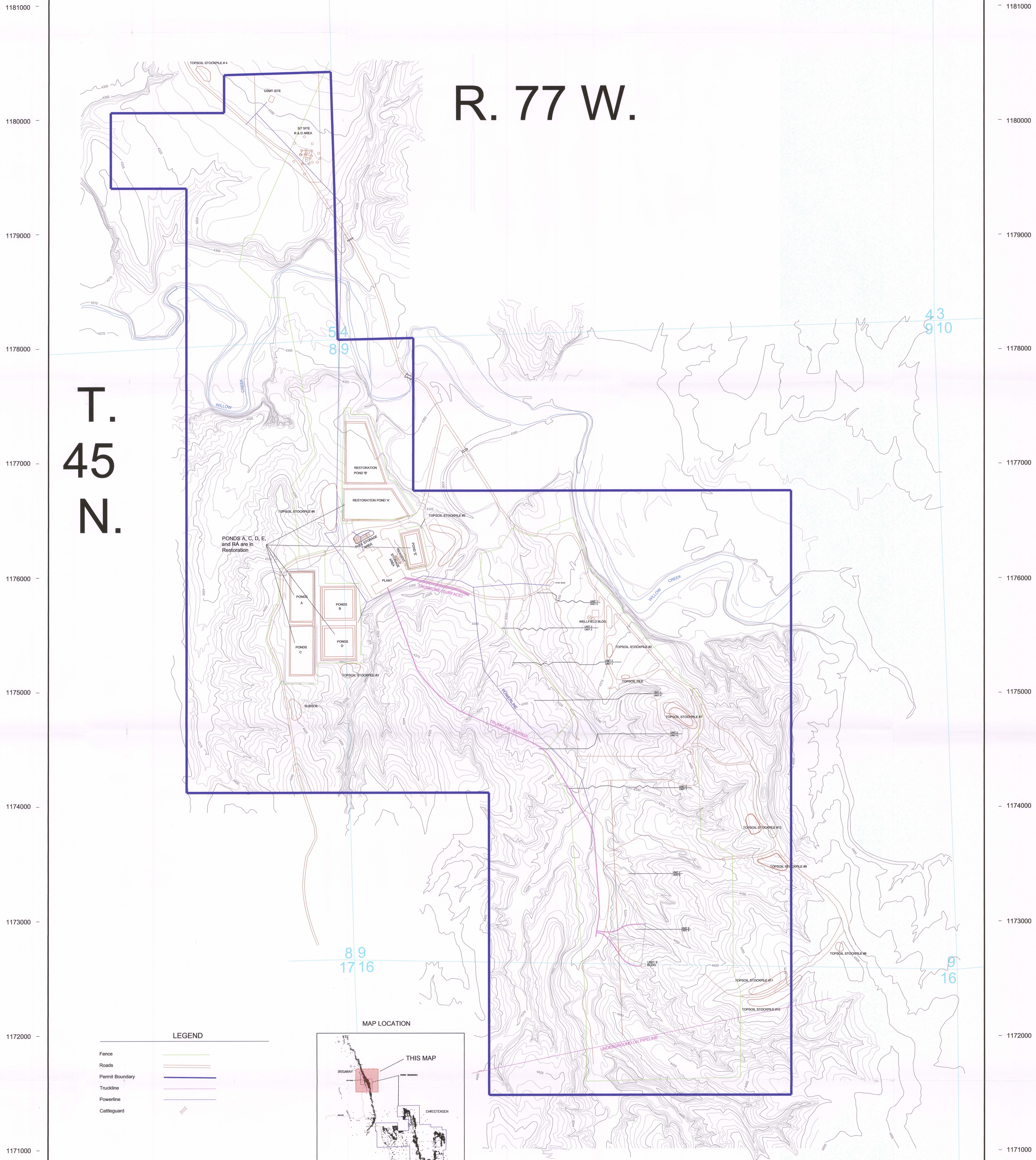


815000 816000 817000 818000 819000 820000 821000 822000 823000



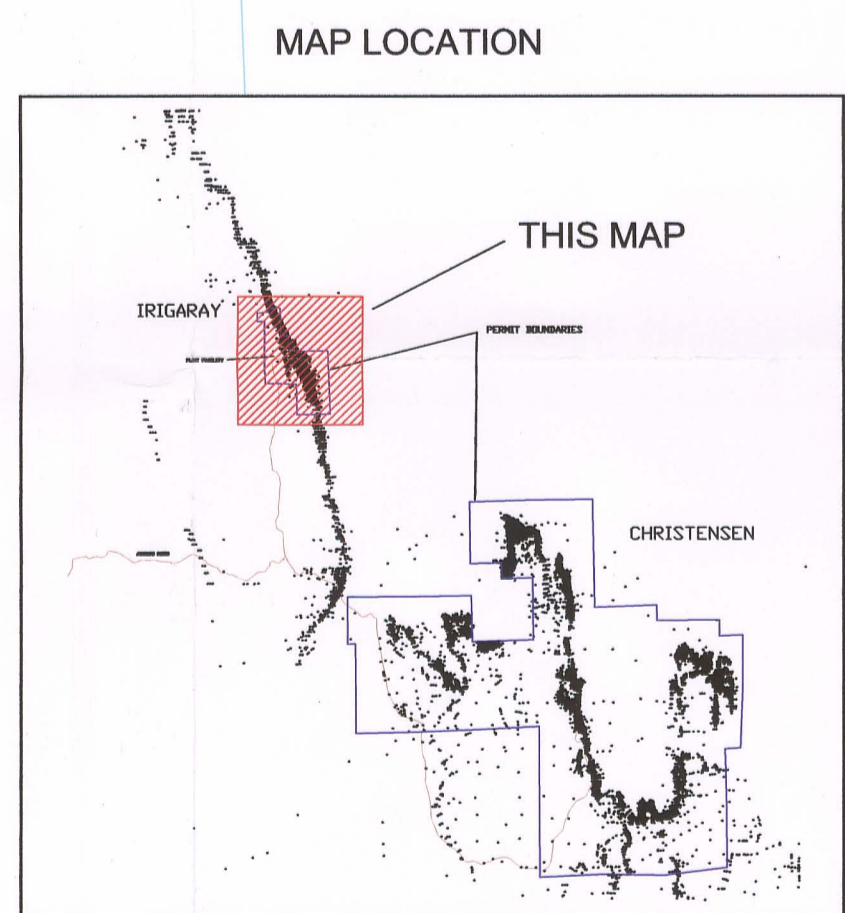
T. 45 N.

R. 77 W.

PONDS A, C, D, E, and RA are in Restoration

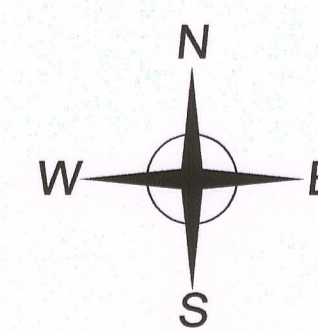
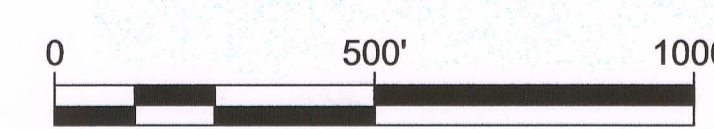
LEGEND

| | |
|-----------------|---|
| Fence | — |
| Roads | — |
| Permit Boundary | — |
| Truckline | — |
| Powerline | — |
| Cattleguard | — |



815000 816000 817000 818000 819000 820000 821000 822000 823000

AREVA **COGEMA Mining, Inc.**
Irigaray Project



General Location Map
Production Units 1 through 9

Permit to Mine # 478

Geology:
Environ: Arbogast
Drafting: RMO
Date: 8-12-2009
Revision:

State: Wyoming County: Johnson:
Scale: 1"=300'
Drawing ID: IR Site 2009.dwg

D-01