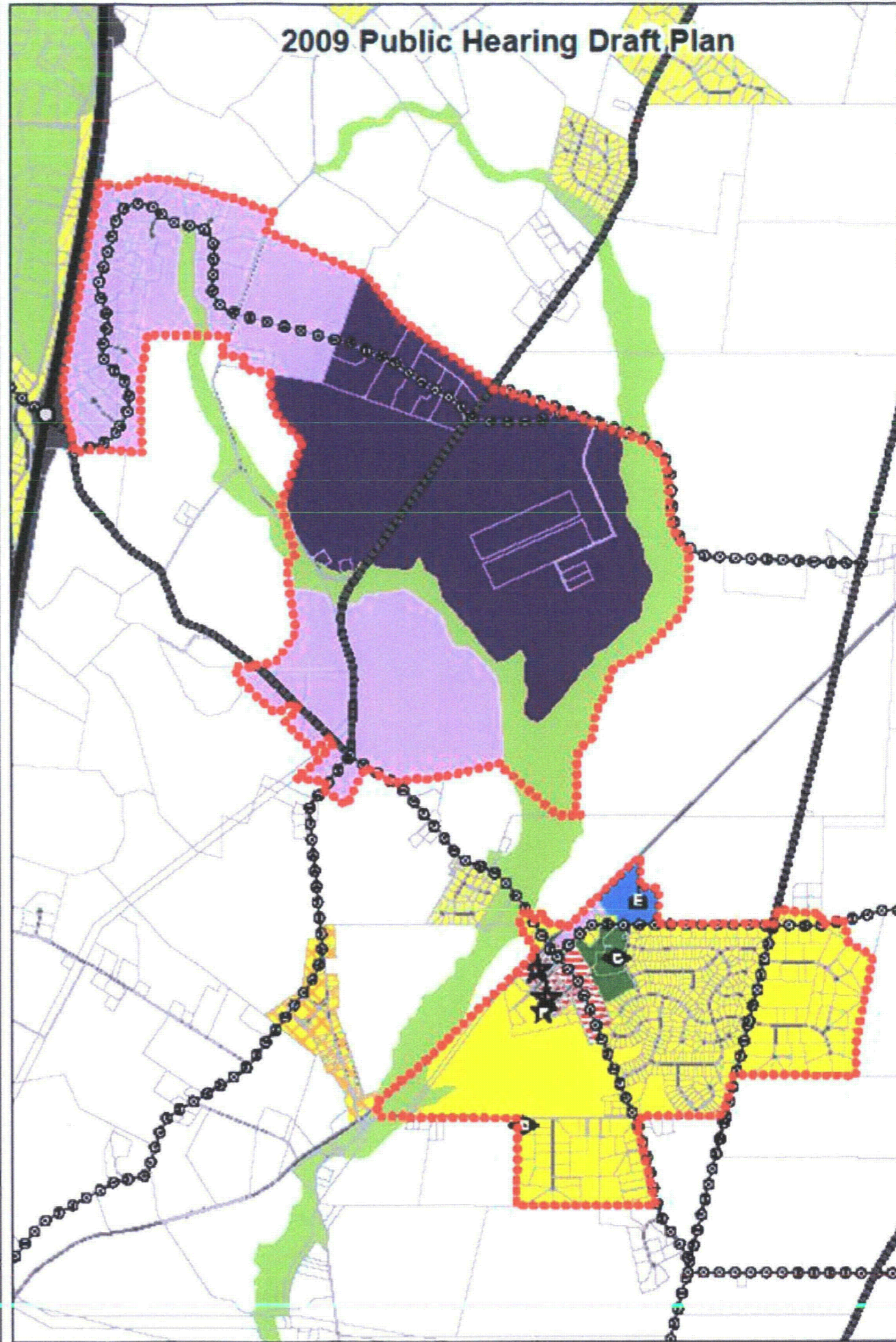
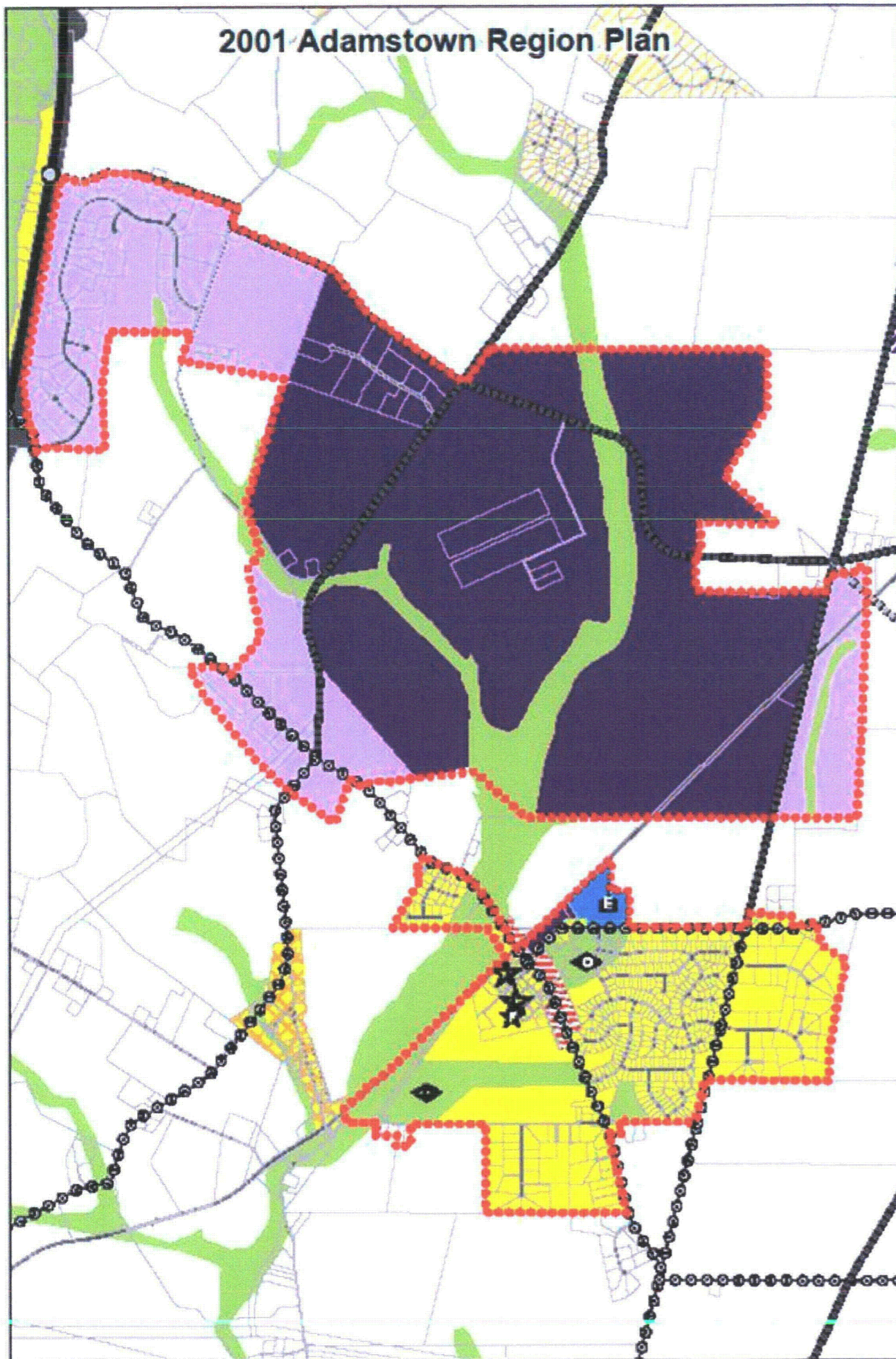


2001 Adamstown Region Plan

2009 Public Hearing Draft Plan



Land Use Plan Designation

- Rural Residential Draft Plan Only
- Agricultural/Rural
- Resource Conservation
- Public/Open Public Parkland/Open Space
- Rural Subdivision
- Rural Neighborhood
- Rural Hamlet
- Rural Community
- Low Density Residential
- Medium Density Residential
- High Density Residential
- Village Center/Town Center
- Highway Service Commercial
- Commercial Rural
- General Commercial
- Limited Industrial
- Office/Research
- General Industrial
- Mineral Mining
- Institutional
- Community Growth Limit

COMMUNITY FACILITIES *

Existing	Proposed	Schools	Elementary (E)
		Middle (M)	High (H)
		Community (C)	Regional (R)
		Special (S)	
		Fire Station (F)	
		Library (L)	
		Transit Station (T)	
		Police Station (P)	

Highways

Existing	Proposed	Classification	Right-of-Way
		Freeway/Expressway	150' - 200'
		Major Arterial	100' - 150'
		Minor Arterial	80'
		Collector	60'
		Local	50'
		Interchange	AS NECESSARY

North arrow and scale bar (0 to 4,000 feet). Includes the logo for Frederick County GIS.

Eastalco/Adamstown Land Use Plan
May 2009

While efforts have been made to ensure the accuracy of this map, Frederick County accepts no liability or responsibility for errors, omissions, or positional inaccuracies in the content of this map. Reliance on this map is at the risk of the user. This map is for illustration purposes only and should not be used for surveying, engineering, or site-specific analysis.

Prepared by Frederick County Division of Planning
May 8, 2009