

John Richmond

From: Peter.Tamburro@exeloncorp.com
Sent: Tuesday, July 01, 2008 10:29 AM
To: John Richmond
Cc: howie.ray@exeloncorp.com; Charles.Albert@exeloncorp.com;
Calvin.Taylor@exeloncorp.com; fred.polaski@exeloncorp.com
Subject: Oyster Creek License Renewal Preliminary Schedule - October Refueling Outage
Attachments: License Renewal Activities.pdf

John

Attached is a Preliminary Schedule for Oyster Creek's Licensing Renewal Related Inspections in our 1R22 Refueling Outage

As you can see many of the inspections are related to the Drywell. Please note that the schedule is still Preliminary

<<License Renewal Activities.pdf>>

***** This e-mail and any of its attachments may contain Exelon Corporation proprietary information, which is privileged, confidential, or subject to copyright belonging to the Exelon Corporation family of Companies. This e-mail is intended solely for the use of the individual or entity to which it is addressed. If you are not the intended recipient of this e-mail, you are hereby notified that any dissemination, distribution, copying, or action taken in relation to the contents of and attachments to this e-mail is strictly prohibited and may be unlawful. If you have received this e-mail in error, please notify the sender immediately and permanently delete the original and any copy of this e-mail and any printout. Thank You. *****

C/20

Received: from OWMS01.nrc.gov (148.184.100.43) by R1MS01.nrc.gov
(148.184.99.10) with Microsoft SMTP Server (TLS) id 8.0.751.0; Tue, 1 Jul
2008 10:29:18 -0400

Received: from mail1.nrc.gov (148.184.176.41) by OWMS01.nrc.gov
(148.184.100.43) with Microsoft SMTP Server id 8.0.751.0; Tue, 1 Jul 2008
10:29:17 -0400

X-Ironport-ID: mail1

X-SBRS: 6.3

X-MID: 26937044

X-IronPort-AV: E=Sophos;i="4.27,731,1204520400";
d="pdf?scan'208,217";a="26937044"

Received: from maileast1.peco.com (HELO exeloncorp.com) ([159.214.124.51]) by
mail1.nrc.gov with ESMTP; 01 Jul 2008 10:29:12 -0400

Received: from ([159.214.172.33]) by mobuniron2.exeloncorp.com with ESMTP id
5502179.105632041; Tue, 01 Jul 2008 10:28:29 -0400

Received: from mobmsxch06.energy.power.corp ([159.214.141.27]) by
MOBMSCON02.energy.power.corp with Microsoft SMTPSVC(6.0.3790.3959); Tue, 1
Jul 2008 10:28:31 -0400

X-MimeOLE: Produced By Microsoft Exchange V6.5

Content-Class: urn:content-classes:message

MIME-Version: 1.0

Subject: Oyster Creek License Renewal Preliminary Schedule - October Refueling Outage

Date: Tue, 1 Jul 2008 10:28:30 -0400

Message-ID:

<D298806D8440D041B2E5D4AD8242F3BF5AA0E4@mobmsxch06.energy.power.corp>

X-MS-Has-Attach: yes

X-MS-TNEF-Correlator:

Thread-Topic: Oyster Creek License Renewal Preliminary Schedule - October Refueling
Outage

Thread-Index: Acjbhrv+/l0vYt1eRmujWYyHJbXnsA==

From: <Peter.Tamburro@exeloncorp.com>

To: <John.Richmond@NRC.gov>

CC: <howie.ray@exeloncorp.com>,
<Charles.Albert@exeloncorp.com>,
<Calvin.Taylor@exeloncorp.com>,
<fred.polaski@exeloncorp.com>

Return-Path: Peter.Tamburro@exeloncorp.com

X-OriginalArrivalTime: 01 Jul 2008 14:28:31.0187 (UTC) FILETIME=[BC555A30:01C8DB86]

Content-Type: multipart/mixed;

boundary="----_=_NextPart_001_01C8DB86.BC161C29"

Activity ID	DISP	SPL	MILE	SUPV	P4	SWIN	Activity Description	Orig Dur	Early Start	Early Finish	Total Float	2008																													
												OCT							NOV																						
												17	18	19	20	21	22	23	24	25	26	27	28	29	30	31	1	2	3	4	5	6	7	8	9	10	11	12	13	14	15
2088495																																									
J208849501	T	4	12	OEPB		PC	LEAKAGE MONITOR TORUS, SANDBEDS & RX DRAIN	3	29OCT08 02:00	29OCT08 04:59	210	■LEAKAGE MONITOR TORUS, SANDBEDS & RX DRAIN																													
J208849502	T	4	12	OEPB		PC	LEAKAGE MONITOR TORUS, SANDBEDS & RX DRAIN	3	29OCT08 05:00	29OCT08 07:59	210	■LEAKAGE MONITOR TORUS, SANDBEDS & RX DRAIN																													
J208849503	T	4	12	OEPB		PC	LEAKAGE MONITOR TORUS, SANDBEDS & RX DRAIN	3	29OCT08 08:00	29OCT08 10:59	210	■LEAKAGE MONITOR TORUS, SANDBEDS & RX DRAIN																													
J208849504	T	4	12	OEPB		PC	LEAKAGE MONITOR TORUS, SANDBEDS & RX DRAIN	3	29OCT08 11:00	29OCT08 13:59	210	■LEAKAGE MONITOR TORUS, SANDBEDS & RX DRAIN																													
J208849505	T	4	12	OEPB		PC	LEAKAGE MONITOR TORUS, SANDBEDS & RX DRAIN	3	29OCT08 14:00	29OCT08 16:59	210	■LEAKAGE MONITOR TORUS, SANDBEDS & RX DRAIN																													
J208849506	T	4	12	OEPB		PC	LEAKAGE MONITOR TORUS, SANDBEDS & RX DRAIN	3	29OCT08 17:00	29OCT08 19:59	210	■LEAKAGE MONITOR TORUS, SANDBEDS & RX DRAIN																													
J208849507	T	4	12	OEPB		PC	LEAKAGE MONITOR TORUS, SANDBEDS & RX DRAIN	3	29OCT08 20:00	29OCT08 22:59	210	■LEAKAGE MONITOR TORUS, SANDBEDS & RX DRAIN																													
J208849508	T	4	12	OEPB		PC	LEAKAGE MONITOR TORUS, SANDBEDS & RX DRAIN	3	29OCT08 23:00	30OCT08 01:59	210	■LEAKAGE MONITOR TORUS, SANDBEDS & RX DRAIN																													
J208849509	T	4	12	OEPB		PC	LEAKAGE MONITOR TORUS, SANDBEDS & RX DRAIN	3	30OCT08 02:00	30OCT08 04:59	210	■LEAKAGE MONITOR TORUS, SANDBEDS & RX DRAIN																													
J208849510	T	4	12	OEPB		PC	LEAKAGE MONITOR TORUS, SANDBEDS & RX DRAIN	3	30OCT08 05:00	30OCT08 07:59	210	■LEAKAGE MONITOR TORUS, SANDBEDS & RX DRAIN																													
J208849511	T	4	12	OEPB		PC	LEAKAGE MONITOR TORUS, SANDBEDS & RX DRAIN	3	30OCT08 08:00	30OCT08 10:59	210	■LEAKAGE MONITOR TORUS, SANDBEDS & RX DRAIN																													
J208849512	T	4	12	OEPB		PC	LEAKAGE MONITOR TORUS, SANDBEDS & RX DRAIN	3	30OCT08 11:00	30OCT08 13:59	210	■LEAKAGE MONITOR TORUS, SANDBEDS & RX DRAIN																													
2088903																																									
J2088903A3	T	4	13	OPRF	H25	PC	RAD PRO SURVEY - DOWN POST TOP OF TORUS	6	27OCT08 17:00	27OCT08 22:59	310	■RAD PRO SURVEY - DOWN POST TOP OF TORUS																													
J2088903R5	T	4	13	OPRF	H25	PC	BAY 1 RP SURVEY AFTER SHIELD BAG REMOVAL	1	27OCT08 17:00	27OCT08 17:59	315	■BAY 1 RP SURVEY AFTER SHIELD BAG REMOVAL																													
J2088903R6	T	4	13	OPRF	H25	PC	BAY 1 ROV VIDEO	1	27OCT08 17:00	27OCT08 17:59	315	■BAY 1 ROV VIDEO																													
J2088903TR	T	4	XX	OCC	H25	PC	NOTIFY T. RAUSCH OF BAY 1 SAND BED LINER INSPECT	0	27OCT08 17:00		1,566	◆NOTIFY T. RAUSCH OF BAY 1 SAND BED LINER INSPECT																													
2088905																																									
J2088905R5	T	4	13	OPRF	H25	PC	BAY 5 RP SURVEY AFTER SHIELD BAG REMOVAL	1	27OCT08 17:00	27OCT08 17:59	315	■BAY 5 RP SURVEY AFTER SHIELD BAG REMOVAL																													
2088906																																									
J2088906R5	T	4	13	OPRF	H25	PC	BAY 7 RP SURVEY AFTER SHIELD BAG REMOVAL	1	27OCT08 17:00	27OCT08 17:59	315	■BAY 7 RP SURVEY AFTER SHIELD BAG REMOVAL																													
J2088906R6	T	4	13	OPRF	H25	PC	BAY 7 ROV VIDEO	1	27OCT08 17:00	27OCT08 17:59	315	■BAY 7 ROV VIDEO																													
2088918																																									
J2088918R5	T	4	13	OPRF	H25	PC	BAY 9 RP SURVEY AFTER SHIELD BAG REMOVAL	1	27OCT08 17:00	27OCT08 17:59	315	■BAY 9 RP SURVEY AFTER SHIELD BAG REMOVAL																													
J2088918R6	T	4	13	OPRF	H25	PC	BAY 9 ROV VIDEO	1	27OCT08 17:00	27OCT08 17:59	315	■BAY 9 ROV VIDEO																													
2088920																																									
J2088920R5	T	4	13	OPRF	H25	PC	BAY 13 RP SURVEY AFTER SHIELD BAG REMOVAL	1	27OCT08 17:00	27OCT08 17:59	315	■BAY 13 RP SURVEY AFTER SHIELD BAG REMOVAL																													
J2088920R6	T	4	13	OPRF	H25	PC	BAY 13 ROV VIDEO	1	27OCT08 17:00	27OCT08 17:59	315	■BAY 13 ROV VIDEO																													
J2088920TR	T	4	XX	OCC	H25	PC	NOTIFY T. RAUSCH OF BAY 13 SAND BED LINER INSPEC	0	27OCT08 17:00		1,566	◆NOTIFY T. RAUSCH OF BAY 13 SAND BED LINER INSPEC																													
2088924																																									
J2088924R5	T	4	13	OPRF	H25	PC	BAY 15 RP SURVEY AFTER SHIELD BAG REMOVAL	1	27OCT08 17:00	27OCT08 17:59	315	■BAY 15 RP SURVEY AFTER SHIELD BAG REMOVAL																													

Data Date 26JUN08 08:00
Run Date 26JUN08 15:58

LFV Opening Layout License Renewal Activities

Oyster Creek 1R22

Sheet 1 of 16

Date	Revision	Checked	Approved

Activity ID	DISP	SPL	MILE	SUPV	P4	SWIN	Activity Description	Orig Dur	Early Start	Early Finish	Total Float	2008																													
												OCT							NOV																						
C201742605	K	5	10	OMM2		SW	535 HEAT TRACE INSTALLATION ACT.	2	06NOV08 13:00	06NOV08 14:59	30	17	18	19	20	21	22	23	24	25	26	27	28	29	30	31	1	2	3	4	5	6	7	8	9	10	11	12	13	14	15
												1535 HEAT TRACE INSTALLATION ACT.																													
2017682																																									
C201768201	K	2	10	OMM3		RW	V-16-230 REPLACE VALVE (LRA)	1	02NOV08 08:00	02NOV08 08:59	134	IV-16-230 REPLACE VALVE (LRA)																													
C201768202	K	2	10	OEPP		RW	V-16-230 INSPECT VALVE INTERNALS	1	02NOV08 09:00	02NOV08 09:59	137	IV-16-230 INSPECT VALVE INTERNALS																													
C201768204	K	2	10	NDE4		RW	V-16-230 VT-3 INSPECTION	4	02NOV08 09:00	02NOV08 12:59	134	IV-16-230 VT-3 INSPECTION																													
C201768203	K	2	10	OMM3		RW	V-16-230 PMT	1	07NOV08 19:00	07NOV08 19:59	12	IV-16-230 PMT																													
2017689																																									
C201768901	K	6	10	OMM3		CW	V-33-1 REPLACE VALVE (LRA)	1	26OCT08 09:00	26OCT08 09:59	183	IV-33-1 REPLACE VALVE (LRA)																													
C201768902	K	6	14	OEPP		CW	V-33-1 INSPECT VALVE INTERNALS	1	02NOV08 20:00	02NOV08 20:59	185	IV-33-1 INSPECT VALVE INTERNALS																													
C201768903	K	6	14	OMM3		CW	V-33-1 PMT	1	02NOV08 20:00	02NOV08 20:59	184	IV-33-1 PMT																													
C201768904	K	6	14	NDE4		CW	V-33-1 VT-3 INSPECTION	4	02NOV08 20:00	02NOV08 23:59	182	IV-33-1 VT-3 INSPECTION																													
2026131																																									
R202613101	K	3	05	OMM2		XF	AUX TRANS(BANK4) ELECTRICAL TESTS	32	25OCT08 00:00	26OCT08 07:59	165	AUX TRANS(BANK4) ELECTRICAL TESTS																													
R202613102	K	3	05	OMV5		XF	AUX XFMR C8-1332 ERECT SCAFFOLD	8	25OCT08 00:00	25OCT08 07:59	144	AUX XFMR C8-1332 ERECT SCAFFOLD																													
R202613104	K	3	05	OMM2		XF	AUX XFMR REMOVE BUSS LINKS (ISOPHASE)	16	25OCT08 08:00	25OCT08 23:59	144	AUX XFMR REMOVE BUSS LINKS (ISOPHASE)																													
R202613105	K	3	05	OMM2		XF	AUX XFMR SUPPORT GROUNDING APPLICATION	3	26OCT08 00:00	26OCT08 02:59	144	AUX XFMR SUPPORT GROUNDING APPLICATION																													
R202613108	K	3	05	OMM2		XF	AUX XFMR REMOVE GRD RESISTOR CAGE	16	26OCT08 03:00	26OCT08 18:59	144	AUX XFMR REMOVE GRD RESISTOR CAGE																													
R202613109	K	3	05	OMM2		XF	AUX XFMR REPLACE COOLING FANS & MOTORS	8	26OCT08 04:00	26OCT08 11:59	151	AUX XFMR REPLACE COOLING FANS & MOTORS																													
R202613106	K	3	05	OMM2		XF	AUX XFMR SUPPORT GROUNDING REMOVAL	2	26OCT08 19:00	26OCT08 20:59	144	AUX XFMR SUPPORT GROUNDING REMOVAL																													
R202613107	K	3	05	OMM2		XF	AUX XFMR REINSTALL BUSS LINKS	8	26OCT08 21:00	27OCT08 04:59	144	AUX XFMR REINSTALL BUSS LINKS																													
R202613103	K	3	16	OMV5		XF	AUX XFMR C8-1332 REMOVE SCAFFOLD	4	29OCT08 10:00*	29OCT08 13:59	409	AUX XFMR C8-1332 REMOVE SCAFFOLD																													
R202613110	K	3	16	SSV5		XF	AUX XFMR OPS POST MAINTENANCE TESTS	1	29OCT08 14:00	29OCT08 14:59	409	AUX XFMR OPS POST MAINTENANCE TESTS																													
2033700																																									
R203370001	K	3	07	OMM2		XF	SU TRANS. BANK 6 ELECTRICAL TESTS	32	01NOV08 11:00	02NOV08 18:59	119	SU TRANS. BANK 6 ELECTRICAL TESTS																													
R203370002	K	3	07	OMM2		XF	SU TRANS BAKN 6 REMOVE GRD RESISTOR CAGE	16	01NOV08 11:00	02NOV08 02:59	135	SU TRANS BAKN 6 REMOVE GRD RESISTOR CAGE																													
R203370003	K	3	07	OMM2		XF	SU TRANS SB REPLACE COOLING FANS	8	01NOV08 11:00	01NOV08 18:59	143	SU TRANS SB REPLACE COOLING FANS																													
R203370004	K	3	16	SSV5		XF	SU TRANS SB OPS POST MAINTENANCE TESTS	1	05NOV08 19:00	05NOV08 19:59	236	SU TRANS SB OPS POST MAINTENANCE TESTS																													
2054006																																									
R205400601	P	4	P	OMM2		A1	VERIFY NEW CABLE AVAILABLE FOR P-37-1	2	26JUN08 08:00	26JUN08 09:59	3,061																														
R205400602	K	4	05	OMM2		A1	PERFORM A HIGH VOLTAGE TEST ON CABLE 13-1	12	27OCT08 20:00	28OCT08 07:59	99	PERFORM A HIGH VOLTAGE TEST ON CABLE 13-1																													

Data Date 26JUN08 06:00
Run Date 26JUN08 15:58

LFV Opening Layout
License Renewal Activities

Oyster Creek
1R22

Sheet 3 of 16

© Primavera Systems, Inc.

Date	Revision	Checked	Approved

Activity ID	DISP	SPL	MILE	SUPV	P4	SWIN	Activity Description	Orig Dur	Early Start	Early Finish	Total Float	2008																														
												OCT							NOV																							
2089997													17	18	19	20	21	22	23	24	25	26	27	28	29	30	31	1	2	3	4	5	6	7	8	9	10	11	12	13	14	15
R208999701	K	6	10	OMM3		CW	V-3-793 INSPECT VALVE 1R22 LRA	4	25OCT08 16:00	25OCT08 19:59	196	■V-3-793 INSPECT VALVE 1R22 LRA																														
R208999702	K	6	14	NDE4		CW	V-3-793 PERFORM INTERNAL INSPECTION	1	25OCT08 20:00	25OCT08 20:59	349	■IV-3-793 PERFORM INTERNAL INSPECTION																														
R208999704	K	6	14	NDE4		CW	V-3-793 NDE VT-3 INSPECTION LICENSE RENEWA	4	25OCT08 21:00	26OCT08 00:59	349	■V-3-793 NDE VT-3 INSPECTION LICENSE RENEWA																														
R208999703	K	6	10	OMM3		CW	V-3-793 PMT	1	31OCT08 12:00	31OCT08 12:59	64	■IV-3-793 PMT																														
2090021																																										
R209002102	K	6	14	OEPP		CW	V-3-799 PERFORM VISUAL INSPECTION	1	29OCT08 05:00	29OCT08 05:59	292	■IV-3-799 PERFORM VISUAL INSPECTION																														
R209002104	K	6	14	NDE4		CW	V-3-799 NDE VT-3 INSPECTION	4	29OCT08 06:00	29OCT08 09:59	292	■V-3-799 NDE VT-3 INSPECTION																														
R209002101	R	6		OMM3		MI	V-3-799 INSPECT VALVE 1R22 LRA	4	31OCT08 14:00	31OCT08 17:59	228	■V-3-799 INSPECT VALVE 1R22 LRA																														
R209002103	K	6	14	OMM3		CW	V-3-799 PMT	1	02NOV08 22:00	02NOV08 22:59	177	■IV-3-799 PMT																														
2090043																																										
R209004302	K	5	14	OEPP		SW	V-3-986 INTERNAL INSPECTION LRA	2	03NOV08 19:00	03NOV08 20:59	85	■V-3-986 INTERNAL INSPECTION LRA																														
R209004304	K	5	14	NDE4		SW	V-3-986 VT-3 INSPECTION	1	03NOV08 21:00	03NOV08 21:59	85	■IV-3-986 VT-3 INSPECTION																														
R209004301	K	5	14	OMM3		SW	V-3-986 INSPECT VALVE 1R22 LRA	8	03NOV08 22:00	04NOV08 05:59	85	■V-3-986 INSPECT VALVE 1R22 LRA																														
R209004303	K	5	14	OMM3		SW	V-3-986 PMT	1	07NOV08 19:00	07NOV08 19:59	66	■IV-3-986 PMT																														
2090057																																										
R209005701	K	6	10	OMM3		CW	V-3-112 INSPECT VALVE 1R22 LRA	8	25OCT08 21:00	26OCT08 04:59	183	■V-3-112 INSPECT VALVE 1R22 LRA																														
R209005702	K	6	10	OEPP		CW	V-3-112 INTERNAL INSPECTION	2	26OCT08 05:00	26OCT08 06:59	186	■IV-3-112 INTERNAL INSPECTION																														
R209005704	K	6	14	NDE4		CW	V-3-112 VT-3 INSPECTION	1	26OCT08 07:00	26OCT08 07:59	366	■IV-3-112 VT-3 INSPECTION																														
R209005703	K	6	14	OMM3		CW	V-3-112 PMT	1	02NOV08 20:00	02NOV08 20:59	184	■IV-3-112 PMT																														
2090060																																										
R209006001	K	6	14	NDE4		CW	V-3-32 NDE VTSPECTION OF V-3-32 (1C SOUTH)	4	29OCT08 08:00	29OCT08 11:59	274	■V-3-32 NDE VTSPECTION OF V-3-32 (1C SOUTH)																														
R209006002	K	6	14	NDE4		CW	V-3-32 NDE VT-3 INSPECTION	4	29OCT08 12:00	29OCT08 15:59	274	■V-3-32 NDE VT-3 INSPECTION																														
2091382																																										
R209138201	K	4	10	NDE4		MSV	MSD WELD NECK FLANGE VT-1 INSPECTION V-1-177	6	29OCT08 23:00	30OCT08 04:59	192	■WELD NECK FLANGE VT-1 INSPECTION V-1-177																														
R209138202	K	4	10	OMW3		MSV	MSD V-1-177 PREP PIPE FOR UT	4	30OCT08 05:00	30OCT08 08:59	192	■V-1-177 PREP PIPE FOR UT																														
R209138203	K	4	10	NDE4		MSV	MSD V-1-177 NDE PERFORM UT	6	30OCT08 09:00	30OCT08 14:59	192	■V-1-177 NDE PERFORM UT																														
R209138204	K	4	13	NDE4		MSV	MSD V-1-177 CLOSE CHILDED AR A2163525	1	30OCT08 15:00	30OCT08 15:59	262	■IV-1-177 CLOSE CHILDED AR A2163525																														
2093471																																										
R209347101	T	3	05	OMI3	ST2	A3	ST645.6.017 1C SWITCHGEAR INSPECTION POINTS	4	27OCT08 20:00	27OCT08 23:59	123	■ST645.6.017 1C SWITCHGEAR INSPECTION POINTS																														
2093513																																										
R209351301	T	4	13	OMM3	320	PC	M-888-17 TORUS MONORAIL INSPECTION	4	28OCT08 03:00	28OCT08 06:59	302	■M-888-17 TORUS MONORAIL INSPECTION																														

Activity ID	DISP	SPL	MILE	SUPV	P4	SWIN	Activity Description	Orig Dur	Early Start	Early Finish	Total Float	2008																													
												OCT							NOV																						
2094317												17	18	19	20	21	22	23	24	25	26	27	28	29	30	31	1	2	3	4	5	6	7	8	9	10	11	12	13	14	15
R209431701	T	4	13	OMI1		MS	V-1-7 (NS03-A); GL 88-14 INST. AIR LEAK TEST.	8	29OCT08 18:00	30OCT08 01:59	267	■V-1-7 (NS03-A); GL 88-14 INST. AIR LEAK TEST.																													
R209431702	K	4	13	SSV5		MS	V-1-7 SUPPORT VALVE STROKE	1	29OCT08 18:00	29OCT08 18:59	283	■V-1-7 SUPPORT VALVE STROKE																													
2094450																																									
R209445001	T	3	07	OMI3	ST2	A4	ST645.6.017 1D SWITCHGEAR INSPECTION POINTS	2	01NOV08 11:00	01NOV08 12:59	141	■ST645.6.017 1D SWITCHGEAR INSPECTION POINTS																													
2094520																																									
R209452001	T	2	14	OMI1		NI	SRM/IRM JUMPERIN , AND MEGGER (IR) TESTS	12	02NOV08 10:00	02NOV08 21:59	171	■SRM/IRM JUMPERIN , AND MEGGER (IR) TESTS																													
R209452002	K	2	14	OMI1		NI	CABLE RESTORATIO N AND PMT	4	08NOV08 18:00	08NOV08 21:59	31	■CABLE RESTORATIO N AND PMT																													
2094526																																									
R209452504	T	2	14	OMI1		NI	SRM CHAR TEST 2400-SMI-3623.03 (OUTAGE)	5	04NOV08 06:00	04NOV08 10:59	161	■SRM CHAR TEST 2400-SMI-3623.03 (OUTAGE)																													
2094623																																									
R209462303	P	4	P	OMW1		187	BAY 9 SET-UP, STAGE TOOLS, AND EQUIP	16	26JUN08 08:00*	27JUN08 15:59	760																														
R209462301	K	4	13	OMW1		PC	BAY 9 REMOVE FLOOR PLUGS	8	27OCT08 17:00	28OCT08 00:59	224	■BAY 9 REMOVE FLOOR PLUGS																													
R209462302	K	4	13	OMW1		PC	BAY 9 FIREWATCH FOR PLUG REMOVED	92	27OCT08 17:00	31OCT08 12:59	224	■BAY 9 FIREWATCH FOR PLUG REMOVED																													
R209462305	K	4	13	OMW1		PC	BAY 9 REMOVE SHIELD BAGS FROM TUNNEL	8	28OCT08 01:00	28OCT08 08:59	240	■BAY 9 REMOVE SHIELD BAGS FROM TUNNEL																													
R209462304	K	4	13	OMW1		PC	BAY 9 CSP ACTIVITY	60	28OCT08 09:00	30OCT08 20:59	240	■BAY 9 CSP ACTIVITY																													
R209462306	K	4	13	NDE4		PC	BAY 9 NDE PERFORM VT INSPECTIONS OF AREA	8	28OCT08 09:00	28OCT08 16:59	240	■BAY 9 NDE PERFORM VT INSPECTIONS OF AREA																													
R209462311	K	4	13	OMV5		PC	187 MODIFY GRATING PLATFORM (CONT)	8	28OCT08 09:00	28OCT08 16:59	292	■187 MODIFY GRATING PLATFORM (CONT)																													
R209462307	K	4	13	OMW1		PC	BAY 9 COATING REPAIR(CONTINGENCY)	24	28OCT08 17:00	29OCT08 16:59	268	■BAY 9 COATING REPAIR(CONTINGENCY)																													
R209462312	K	4	13	NDE4		PC	187 (CM-1) PERFORM UT INSPECTIONS	12	28OCT08 17:00	29OCT08 04:59	268	■187 (CM-1) PERFORM UT INSPECTIONS																													
R209462309	K	4	14	OMW1		PC	BAY 9 DEMOB & RESTOW TOOLS AND EQUIP	8	29OCT08 05:00	29OCT08 12:59	269	■BAY 9 DEMOB & RESTOW TOOLS AND EQUIP																													
R209462308	K	4	14	OMW1		PC	BAY 9 REINSTALL SHIELD BAGS	12	29OCT08 13:00	30OCT08 00:59	269	■BAY 9 REINSTALL SHIELD BAGS																													
R209462310	K	4	14	OMW1		PC	BAY 9 REINSTALL FLOOR PLUG	8	30OCT08 01:00	30OCT08 08:59	269	■BAY 9 REINSTALL FLOOR PLUG																													
2095467																																									
R209546703	P	4	P	OMW1		187	BAY 17 SET-UP, STAGE TOOLS, AND EQUIP	16	26JUN08 08:00*	27JUN08 15:59	760																														
R209546701	K	4	13	OMW1		PC	BAY 17 REMOVE FLOOR PLUG	8	27OCT08 17:00	28OCT08 00:59	224	■BAY 17 REMOVE FLOOR PLUG																													
R209546702	K	4	13	OMW1		PC	BAY 17 FIREWATCH FOR PLUG REMOVED	92	27OCT08 17:00	31OCT08 12:59	224	■BAY 17 FIREWATCH FOR PLUG REMOVED																													
R209546704	K	4	13	OMW1		PC	BAY 17 CSP ACTIVITY	60	28OCT08 11:00	30OCT08 22:59	238	■BAY 17 CSP ACTIVITY																													
R209546705	K	4	13	OMW1		PC	BAY 17 REMOVE SHIELD BAGS FROM TUNNEL	8	28OCT08 11:00	28OCT08 18:59	238	■BAY 17 REMOVE SHIELD BAGS FROM TUNNEL																													
R209546706	K	4	13	NDE4		PC	BAY 17 NDE PERFORM VT INSPECTIONS OF AREA	5	28OCT08 19:00	28OCT08 23:59	259	■BAY 17 NDE PERFORM VT INSPECTIONS OF AREA																													
R209546707	K	4	13	OMW1		PC	BAY 17 COATING REPAIR(CONTINGENCY)	24	29OCT08 00:00	29OCT08 23:59	261	■BAY 17 COATING REPAIR(CONTINGENCY)																													

Data Date 26JUN08 08:00
Run Date 26JUN08 15:58

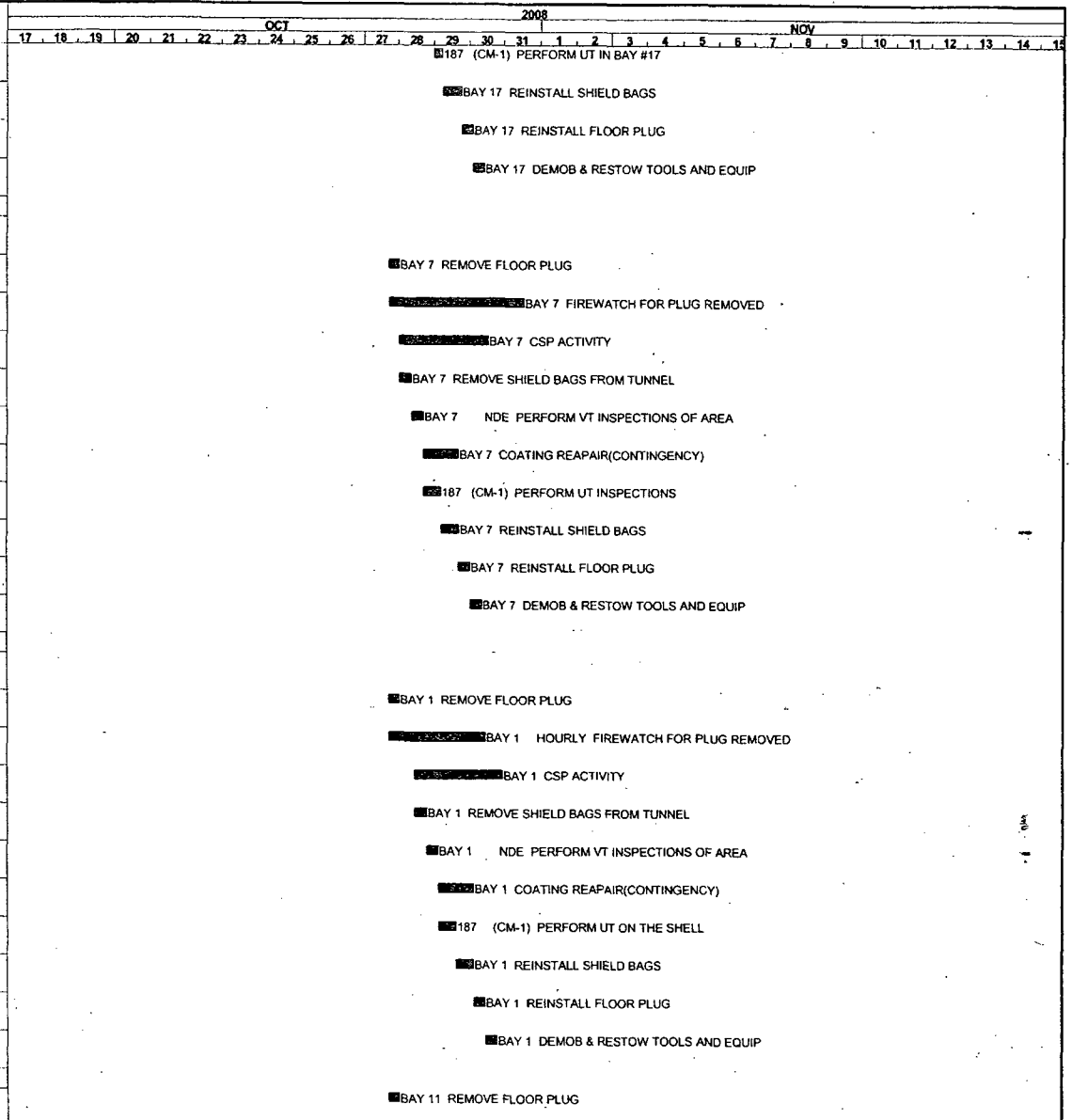
LFV Opening Layout
License Renewal Activities

Oyster Creek
1R22

Sheet 6 of 16

Date	Revision	Checked	Approved

Activity ID	DISP	SPL	MILE	SUPV	P4	SWIN	Activity Description	Orig Dur	Early Start	Early Finish	Total Float
R209546711	K	4	13	NDE4		PC	187 (CM-1) PERFORM UT IN BAY #17	6	29OCT08 00:00	29OCT08 05:59	259
R209546708	K	4	13	OMW1		PC	BAY 17 REINSTALL SHIELD BAGS	12	29OCT08 08:00	29OCT08 17:59	259
R209546710	K	4	13	OMW1		PC	BAY 17 REINSTALL FLOOR PLUG	8	29OCT08 18:00	30OCT08 01:59	259
R209546709	K	4	14	OMW1		PC	BAY 17 DEMOB & RESTOW TOOLS AND EQUIP	8	30OCT08 02:00	30OCT08 09:59	268
2095468											
R209546803	P	4	P	OMW1		187	BAY 7 SET-UP, STAGE TOOLS, AND EQUIP	16	26JUN08 08:00*	27JUN08 15:59	760
R209546801	K	4	13	OMW1		PC	BAY 7 REMOVE FLOOR PLUG	8	27OCT08 17:00	28OCT08 00:59	224
R209546802	K	4	13	OMW1		PC	BAY 7 FIREWATCH FOR PLUG REMOVED	92	27OCT08 17:00	31OCT08 12:59	224
R209546804	K	4	13	OMW1		PC	BAY 7 CSP ACTIVITY	60	28OCT08 01:00	30OCT08 12:59	248
R209546805	K	4	13	OMW1		PC	BAY 7 REMOVE SHIELD BAGS FROM TUNNEL	8	28OCT08 01:00	28OCT08 08:59	248
R209546806	K	4	13	NDE4		PC	BAY 7 NDE PERFORM VT INSPECTIONS OF AREA	8	28OCT08 09:00	28OCT08 16:59	260
R209546807	K	4	13	OMW1		PC	BAY 7 COATING REPAIR(CONTINGENCY)	24	28OCT08 17:00	29OCT08 16:59	268
R209546812	K	4	13	NDE4		PC	187 (CM-1) PERFORM UT INSPECTIONS	12	28OCT08 17:00	29OCT08 04:59	260
R209546808	K	4	13	OMW1		PC	BAY 7 REINSTALL SHIELD BAGS	12	29OCT08 05:00	29OCT08 16:59	260
R209546810	K	4	13	OMW1		PC	BAY 7 REINSTALL FLOOR PLUG	8	29OCT08 17:00	30OCT08 00:59	260
R209546809	K	4	14	OMW1		PC	BAY 7 DEMOB & RESTOW TOOLS AND EQUIP	8	30OCT08 01:00	30OCT08 08:59	269
2095469											
R209546903	P	4	P	OMW1		187	BAY 1 SET-UP, STAGE TOOLS, AND EQUIP	16	26JUN08 08:00*	27JUN08 15:59	760
R209546901	K	4	13	OMW1		PC	BAY 1 REMOVE FLOOR PLUG	8	27OCT08 17:00	28OCT08 00:59	248
R209546902	K	4	14	OMW1		PC	BAY 1 HOURLY FIREWATCH FOR PLUG REMOVED	66*	27OCT08 17:00	30OCT08 10:59	259
R209546904	K	4	13	OMW1		PC	BAY 1 CSP ACTIVITY	60	28OCT08 11:00	30OCT08 22:59	238
R209546905	K	4	13	OMW1		PC	BAY 1 REMOVE SHIELD BAGS FROM TUNNEL	8	28OCT08 11:00	28OCT08 18:59	238
R209546906	K	4	13	NDE4		PC	BAY 1 NDE PERFORM VT INSPECTIONS OF AREA	8	28OCT08 19:00	29OCT08 02:59	258
R209546907	K	4	13	OMW1		PC	BAY 1 COATING REPAIR(CONTINGENCY)	24	29OCT08 03:00	30OCT08 02:59	258
R209546912	K	4	13	NDE4		PC	187 (CM-1) PERFORM UT ON THE SHELL	12	29OCT08 03:00	29OCT08 14:59	258
R209546908	K	4	13	OMW1		PC	BAY 1 REINSTALL SHIELD BAGS	12	29OCT08 15:00	30OCT08 02:59	258
R209546910	K	4	14	OMW1		PC	BAY 1 REINSTALL FLOOR PLUG	8	30OCT08 03:00	30OCT08 10:59	259
R209546909	K	4	14	OMW1		PC	BAY 1 DEMOB & RESTOW TOOLS AND EQUIP	8	30OCT08 11:00	30OCT08 18:59	259
2095471											
R209547101	K	4	13	OMW1		PC	BAY 11 REMOVE FLOOR PLUG	8	27OCT08 17:00	28OCT08 00:59	216



Data Date: 26JUN08 08:00
 Run Date: 26JUN08 15:58

LFV Opening Layout
 License Renewal Activities

Oyster Creek
 1R22

Sheet 7 of 16

© Primavera Systems, Inc.

Date	Revision	Checked	Approved

Activity ID	DISP	SPL	MILE	SUPV	P4	SWIN	Activity Description	Orig Dur	Early Start	Early Finish	Total Float	2008																																																					
												<table border="1"> <thead> <tr> <th colspan="12">OCT</th> <th colspan="12">NOV</th> </tr> <tr> <th>17</th><th>18</th><th>19</th><th>20</th><th>21</th><th>22</th><th>23</th><th>24</th><th>25</th><th>26</th><th>27</th><th>28</th><th>29</th><th>30</th><th>31</th> <th>1</th><th>2</th><th>3</th><th>4</th><th>5</th><th>6</th><th>7</th><th>8</th><th>9</th><th>10</th><th>11</th><th>12</th><th>13</th><th>14</th><th>15</th> </tr> </thead> </table>												OCT												NOV												17	18	19	20	21	22	23	24	25	26	27	28	29	30	31	1	2	3
OCT												NOV																																																					
17	18	19	20	21	22	23	24	25	26	27	28	29	30	31	1	2	3	4	5	6	7	8	9	10	11	12	13	14	15																																				
R209564726	T	4	13	OMW3	320	PC	TORUS COATING REPAIR	8	28OCT08 09:00	28OCT08 16:59	274	■ TORUS COATING REPAIR																																																					
R209564728	T	4	13	OMM3		PC	TORUS VENT HEADER INTERNAL INSPECTION	35	28OCT08 09:00	29OCT08 19:59	263	■ TORUS VENT HEADER INTERNAL INSPECTION																																																					
R209564710	T	4	13	OMVM	3X1	PC	TORUS CLOSE OUT INSPECTION	4	28OCT08 17:00	28OCT08 20:59	274	■ TORUS CLOSE OUT INSPECTION																																																					
R209564721	T	4	13	SSV5	3X1	PC	TORUS TORUS CLOSE-OUT INSPECTION	2	28OCT08 19:00	28OCT08 20:59	274	■ TORUS TORUS CLOSE-OUT INSPECTION																																																					
R209564712	T	4	13	OMVM	3X1	PC	TORUS INSTALL S. MANWAY COVER	6	28OCT08 21:00	29OCT08 02:59	274	■ TORUS INSTALL S. MANWAY COVER																																																					
R209564711	T	4	13	OMVM	3X1	PC	TORUS INSTALL N. MANWAY COVER	6	29OCT08 03:00	29OCT08 08:59	274	■ TORUS INSTALL N. MANWAY COVER																																																					
R209564713	P	6	P	OMVS		187	NORTH TORUS PLUG C8-1258 REMOVE HANDRAIL	4	29OCT08 09:00	29OCT08 12:59	363	■ NORTH TORUS PLUG C8-1258 REMOVE HANDRAIL																																																					
R209564718	T	4	14	OMVS	3X1	PC	TORUS HATCH C8-1260 REMOVE HANDRAIL	3	29OCT08 09:00	29OCT08 11:59	282	■ TORUS HATCH C8-1260 REMOVE HANDRAIL																																																					
R209564724	T	4	14	OMI1	3X1	PC	TORUS MANWAYS LLRT DOUBLE SEAL 665.5.006	1	29OCT08 09:00	29OCT08 09:59	284	■ TORUS MANWAYS LLRT DOUBLE SEAL 665.5.006																																																					
R209564715	T	4	14	OMVC	3X1	PC	TORUS INSTALL NORTH FLOOR PLUG	4	29OCT08 12:00	29OCT08 15:59	282	■ TORUS INSTALL NORTH FLOOR PLUG																																																					
R209564719	T	4	14	OMVS	3X1	PC	TORUS HATCH C8-1261 REMOVE HANDRAIL	4	04NOV08 03:00*	04NOV08 06:59	147	■ TORUS HATCH C8-1261 REMOVE HANDRAIL																																																					
R209564716	T	4	14	OMVS	3X1	PC	TORUS INSTALL SOUTH FLOOR PLUG	4	04NOV08 07:00*	04NOV08 10:59	147	■ TORUS INSTALL SOUTH FLOOR PLUG																																																					
R209564735	K	4	16	OMVC		PC	TORUS DEMOBE & STORE GANTRY	8	04NOV08 11:00	04NOV08 18:59	261	■ TORUS DEMOBE & STORE GANTRY																																																					
2095750																																																																	
R209575001	T	4	12	OMM3		RR	RECIRC PUMP MONO RAIL HOIST - REFUEL OUTAGE	8	28OCT08 07:00	28OCT08 14:59	279	■ RECIRC PUMP MONO RAIL HOIST - REFUEL OUTAGE																																																					
R209575002	T	4	12	NDE4		RR	M-262-1 NDE MT HOIST HOOK	2	28OCT08 15:00	28OCT08 16:59	279	■ M-262-1 NDE MT HOIST HOOK																																																					
2096031																																																																	
R209603101	K	4	13	NDE4	EL	IS	ISI-187 S/BD NDE UT DW SHELL IN SANDBED REGION	24	28OCT08 09:00	29OCT08 08:59	293	■ ISI-187 S/BD NDE UT DW SHELL IN SANDBED REGION																																																					
2096037																																																																	
R209603702	K	4	13	OMVS	DS	PC	187 C8-1262 ERECT UT EXAM	10	28OCT08 12:00	28OCT08 21:59	263	■ 187 C8-1262 ERECT UT EXAM																																																					
R209603701	K	4	13	NDE4		PC	187 NDE UT OF UPPER DRYWELL	24	28OCT08 22:00	29OCT08 21:59	263	■ 187 NDE UT OF UPPER DRYWELL																																																					
R209603703	K	4	16	OMVS	EL	PC	UT INSPECT. C8-1262 REMOVE SCAFFOLD	5	06NOV08 22:00*	07NOV08 02:59	205	■ UT INSPECT. C8-1262 REMOVE SCAFFOLD																																																					
2096676																																																																	
R209667601	T	5	14	OEDM		TB	INSPECT TURBINE PEDESTAL	48	25OCT08 22:00	27OCT08 21:59	330	■ INSPECT TURBINE PEDESTAL																																																					
2096677																																																																	
R209667701	T	4	12	OEDM		MI	DW SHIELD WALLS STRUCTURAL INSPECTION	4	31OCT08 11:00	31OCT08 14:59	221	■ DW SHIELD WALLS STRUCTURAL INSPECTION																																																					
2096678																																																																	
R209667801	T	5	14	OEDM		MI	HEATER BAY STRUCTURAL INSPECTION	24	25OCT08 03:00	26OCT08 02:59	371	■ HEATER BAY STRUCTURAL INSPECTION																																																					
2097321																																																																	
R209732101	T	4	13	OEDM		PC	DRY WELL STRUCTURAL INSPECTION	32	27OCT08 17:00	29OCT08 00:59	155	■ DRY WELL STRUCTURAL INSPECTION																																																					
R209732102	T	4	13	OEDM		PC	TORUS STRUCTURAL INSPECTION	12	27OCT08 17:00	28OCT08 04:59	175	■ TORUS STRUCTURAL INSPECTION																																																					
R209732106	K	4	13	OMVS		PC	BIO-SHIELD C8-1269 ERECT SCAFFOLD	8	28OCT08 20:00*	29OCT08 03:59	160	■ BIO-SHIELD C8-1269 ERECT SCAFFOLD																																																					

Data Date 26JUN08 08:00 LFV Opening Layout
Run Date 26JUN08 15:58 License Renewal Activities

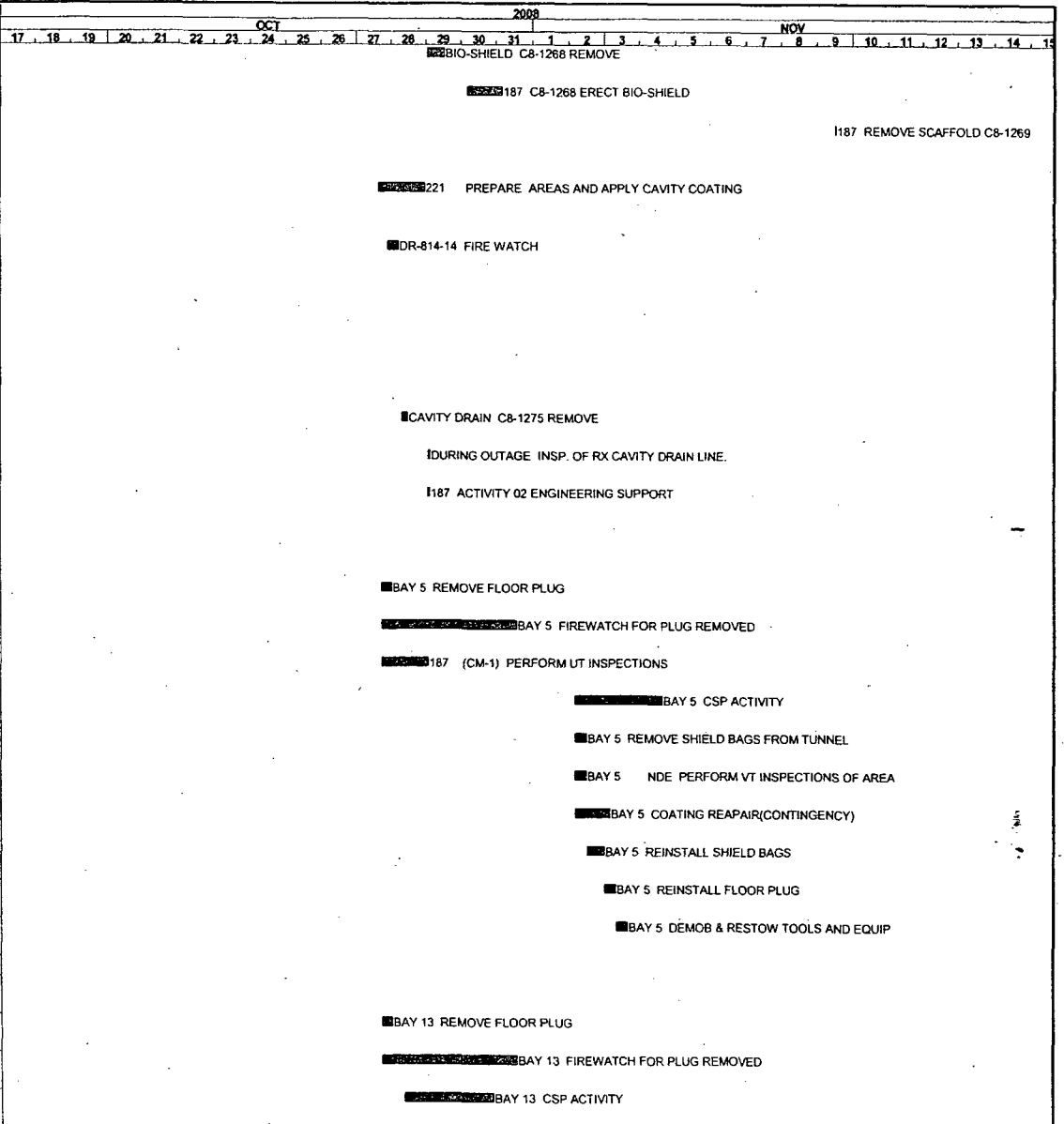
Oyster Creek
1R22

Sheet 9 of 16

© Primavera Systems, Inc.

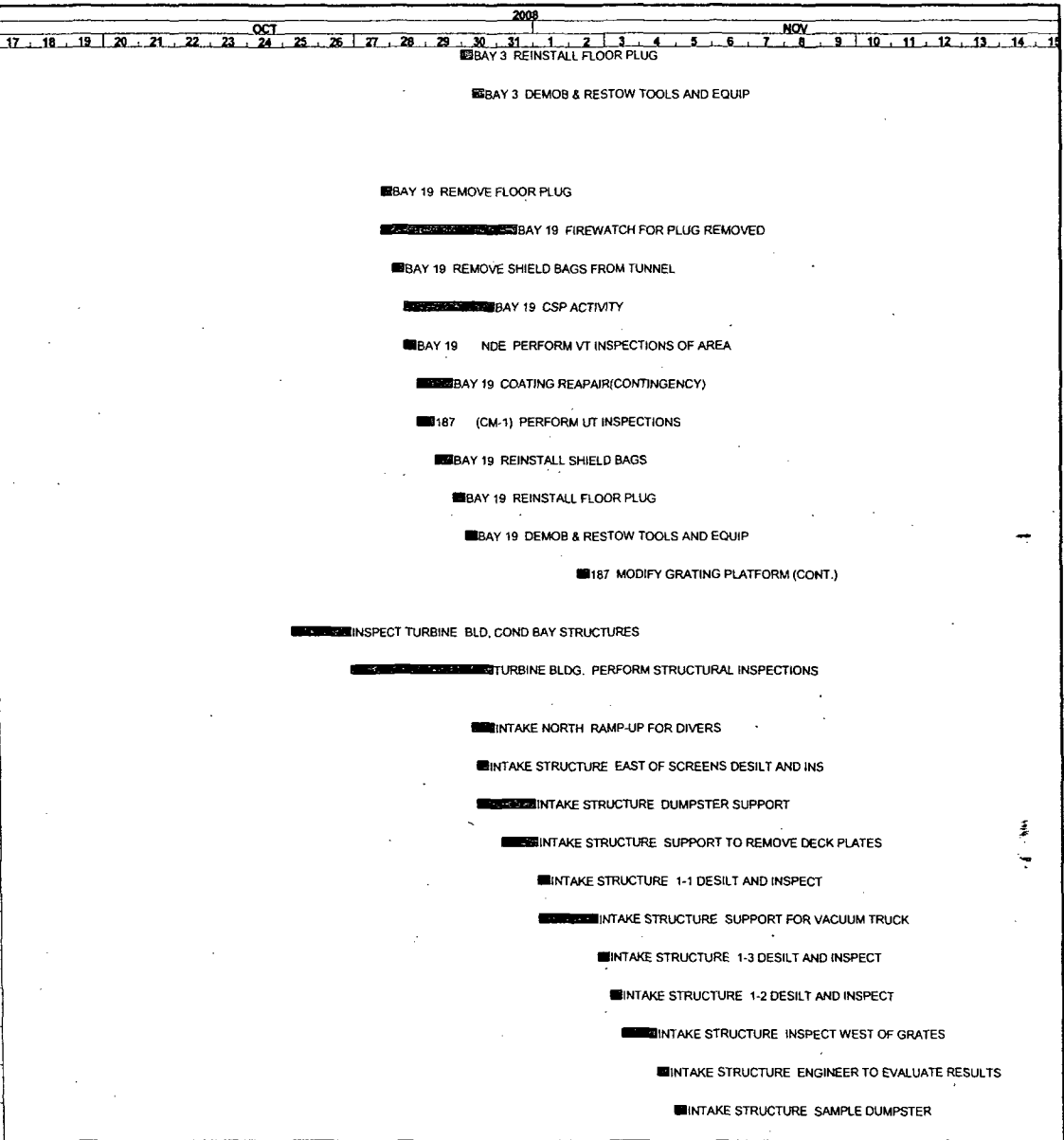
Date	Revision	Checked	Approved

Activity ID	DISP	SPL	MILE	SUPV	P4	SWIN	Activity Description	Orig Dur	Early Start	Early Finish	Total Float
R209732105	K	4	13	OMVS		PC	BIO-SHIELD C8-1268 REMOVE	12	29OCT08 01:00	29OCT08 12:59	155
R209732104	K	4	13	OMVS		PC	187 C8-1268 ERECT BIO-SHIELD	24	30OCT08 04:00	31OCT08 03:59	136
R209732107	K	4	16	OMVS		PC	187 REMOVE SCAFFOLD C8-1269	1	09NOV08 12:00	09NOV08 12:59	147
2098683											
R209868306	K	2	16	OMW3		DV	221 PREPARE AREAS AND APPLY CAVITY COATING	32	27OCT08 15:00	28OCT08 22:59	424
2100729											
R210072902	T	1	14	SSVS		MI	DR-814-14 FIRE WATCH	8	27OCT08 22:00	28OCT08 05:59	320
2102695											
R210269505	K	2	XX	OEPP		RV	187 ENGINEERING SUPPORT ACTIVITY	8	26JUN08 10:00	26JUN08 17:59	4,516
R210269503	P	6	P	OMVS		187	CAVITY DRAIN C8-1275 ERECT SCAFFOLD	1	22SEP08 08:00*	22SEP08 08:59	279
R210269501	P	6	P	OMM3		187	PRE-OUTAGE INSP. OF RX CAVITY DRAIN LINE.	4	06OCT08 09:00*	06OCT08 12:59	195
R210269504	P	6	P	OMVS		187	CAVITY DRAIN C8-1275 REMOVE	4	28OCT08 08:00	28OCT08 11:59	372
R210269502	T	2	12	OMM3		RV	DURING OUTAGE INSP. OF RX CAVITY DRAIN LINE.	1	29OCT08 02:00	29OCT08 02:59	245
R210269506	T	2	12	OEPP		RV	187 ACTIVITY 02 ENGINEERING SUPPORT	1	29OCT08 02:00	29OCT08 02:59	282
2105179											
R210517903	P	4	P	OMW1		PC	BAY 5 SET-UP, STAGE TOOLS, AND EQUIP	16	26JUN08 08:00	27JUN08 15:59	760
R210517901	K	4	13	OMW1		PC	BAY 5 REMOVE FLOOR PLUG	8	27OCT08 17:00	28OCT08 00:59	224
R210517902	K	4	13	OMW1		PC	BAY 5 FIREWATCH FOR PLUG REMOVED	92	27OCT08 17:00	31OCT08 12:59	224
R210517912	K	4	13	NDE4		PC	187 (CM-1) PERFORM UT INSPECTIONS	33	27OCT08 17:00	29OCT08 01:59	283
R210517904	K	4	13	OMW1		PC	BAY 5 CSP ACTIVITY	60	02NOV08 04:00	04NOV08 15:59	125
R210517905	K	4	13	OMW1		PC	BAY 5 REMOVE SHIELD BAGS FROM TUNNEL	8	02NOV08 04:00	02NOV08 11:59	125
R210517906	K	4	13	NDE4		PC	BAY 5 NDE PERFORM VT INSPECTIONS OF AREA	8	02NOV08 04:00	02NOV08 11:59	157
R210517907	K	4	16	OMW1		PC	BAY 5 COATING REPAIR(CONTINGENCY)	24	02NOV08 04:00	03NOV08 03:59	300
R210517908	K	4	13	OMW1		PC	BAY 5 REINSTALL SHIELD BAGS	12	02NOV08 12:00	02NOV08 23:59	157
R210517910	K	4	13	OMW1		PC	BAY 5 REINSTALL FLOOR PLUG	8	03NOV08 00:00	03NOV08 07:59	157
R210517909	K	4	16	OMW1		PC	BAY 5 DEMOB & RESTOW TOOLS AND EQUIP	8	03NOV08 08:00	03NOV08 15:59	288
2105477											
R210547703	P	4	P	OMW1		PC	BAY 13 SET-UP, STAGE TOOLS, AND EQUIP	16	26JUN08 08:00	27JUN08 15:59	760
R210547701	K	4	13	OMW1		PC	BAY 13 REMOVE FLOOR PLUG	8	27OCT08 17:00	28OCT08 00:59	224
R210547702	K	4	13	OMW1		PC	BAY 13 FIREWATCH FOR PLUG REMOVED	92	27OCT08 17:00	31OCT08 12:59	224
R210547704	K	4	13	OMW1		PC	BAY 13 CSP ACTIVITY	60	28OCT08 09:00	30OCT08 20:59	240

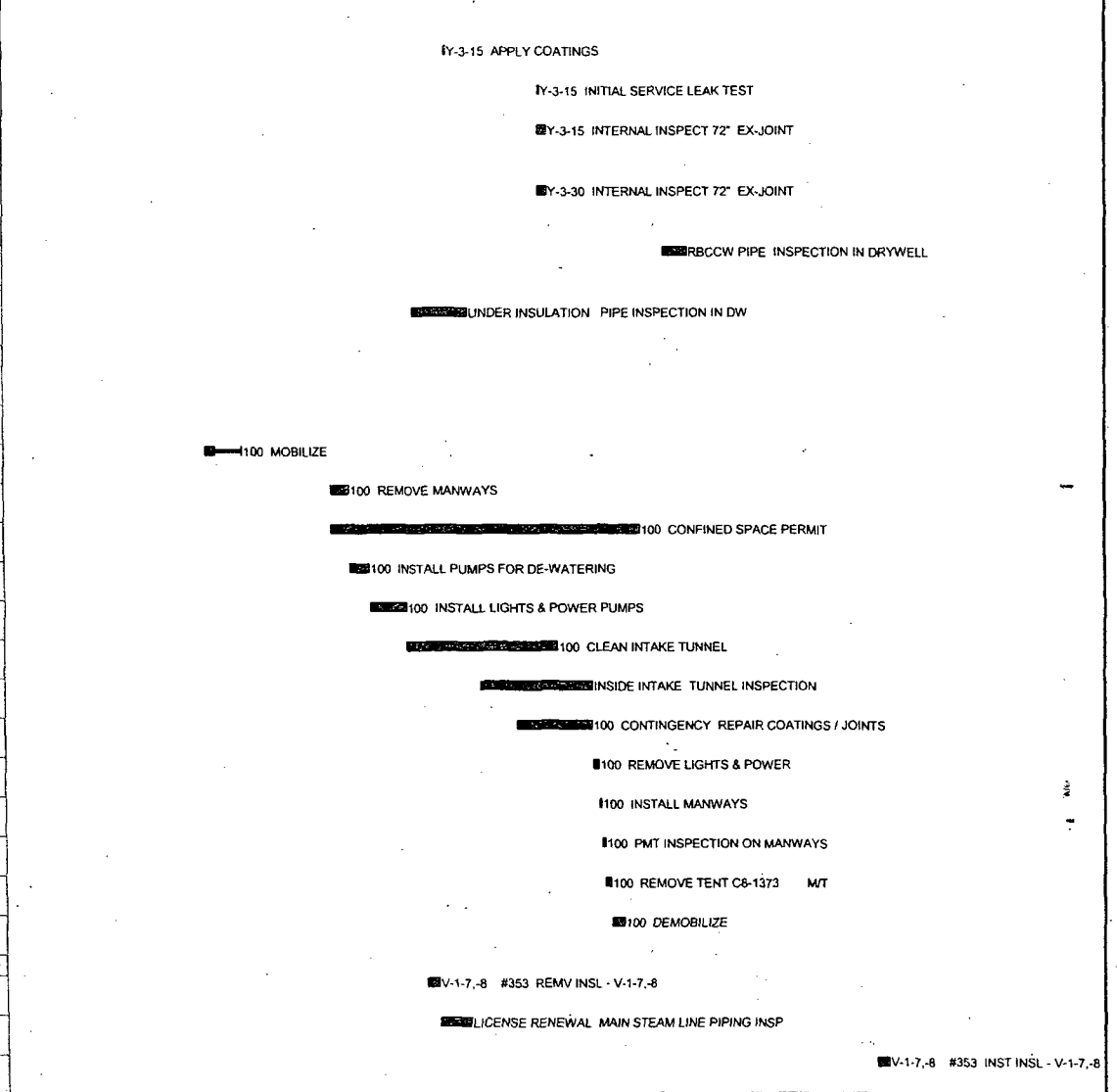
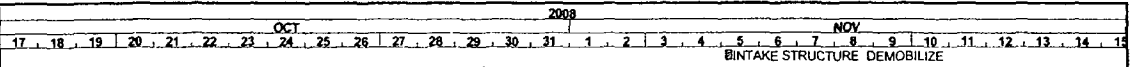


Date	Revision	Checked	Approved

Activity ID	DISP	SPL	MILE	SUPV	P4	SWIN	Activity Description	Orig Dur	Early Start	Early Finish	Total Float
R210551510	K	4	13	OMW1		PC	BAY 3 REINSTALL FLOOR PLUG	8	29OCT08 23:00	30OCT08 06:59	254
R210551509	K	4	16	OMW1		PC	BAY 3 DEMOB & RESTOW TOOLS AND EQUIP	8	30OCT08 07:00	30OCT08 14:59	385
2105516											
R210551603	P	4	P	OMW1		PC	BAY 19 SET-UP, STAGE TOOLS, AND EQUIP	16	26JUN08 08:00	27JUN08 15:59	760
R210551601	K	4	13	OMW1		PC	BAY 19 REMOVE FLOOR PLUG	8	27OCT08 17:00	28OCT08 00:59	224
R210551602	K	4	13	OMW1		PC	BAY 19 FIREWATCH FOR PLUG REMOVED	92	27OCT08 17:00	31OCT08 12:59	224
R210551605	K	4	13	OMW1		PC	BAY 19 REMOVE SHIELD BAGS FROM TUNNEL	8	28OCT08 01:00	28OCT08 08:59	240
R210551604	K	4	13	OMW1		PC	BAY 19 CSP ACTIVITY	60	28OCT08 09:00	30OCT08 20:59	240
R210551606	K	4	13	NDE4		PC	BAY 19 NDE PERFORM VT INSPECTIONS OF AREA	8	28OCT08 09:00	28OCT08 16:59	260
R210551607	K	4	13	OMW1		PC	BAY 19 COATING REPAIR(CONTINGENCY)	24	28OCT08 17:00	29OCT08 16:59	268
R210551612	K	4	13	NDE4		PC	187 (CM-1) PERFORM UT INSPECTIONS	12	28OCT08 17:00	29OCT08 04:59	260
R210551608	K	4	13	OMW1		PC	BAY 19 REINSTALL SHIELD BAGS	12	29OCT08 05:00	29OCT08 16:59	260
R210551610	K	4	13	OMW1		PC	BAY 19 REINSTALL FLOOR PLUG	8	29OCT08 17:00	30OCT08 00:59	260
R210551609	K	4	16	OMW1		PC	BAY 19 DEMOB & RESTOW TOOLS AND EQUIP	8	30OCT08 01:00	30OCT08 08:59	391
R210551611	K	4	13	OMVS		PC	187 MODIFY GRATING PLATFORM (CONT.)	8	02NOV08 04:00*	02NOV08 11:59	177
2105563											
R210556301	T	5	14	OEDM		MI	INSPECT TURBINE BLD, COND BAY STRUCTURES	40	25OCT08 03:00	26OCT08 18:59	259
R210556302	T	5	14	OEDM		MI	TURBINE BLDG. PERFORM STRUCTURAL INSPECTIONS	96	26OCT08 19:00	30OCT08 18:59	259
2113811											
R211381101	K	6	10	OMVM		CW	INTAKE NORTH RAMP-UP FOR DIVERS	16	30OCT08 04:00	30OCT08 19:59	90
R211381107	K	6	10	OMVM		CW	INTAKE STRUCTURE EAST OF SCREENS DESILT AND INS	8	30OCT08 07:00	30OCT08 14:59	50
R211381108	K	6	10	OMVM		CW	INTAKE STRUCTURE DUMPSTER SUPPORT	40	30OCT08 07:00	31OCT08 22:59	50
R211381102	K	6	10	OMVM		CW	INTAKE STRUCTURE SUPPORT TO REMOVE DECK PLATES	24	31OCT08 00:00	31OCT08 23:59	90
R211381106	K	6	10	OMVM		CW	INTAKE STRUCTURE 1-1 DESILT AND INSPECT	8	01NOV08 00:00	01NOV08 07:59	90
R211381109	K	6	10	OMVM		CW	INTAKE STRUCTURE SUPPORT FOR VACUUM TRUCK	40	01NOV08 00:00	02NOV08 15:59	90
R211381104	K	6	10	OMVM		CW	INTAKE STRUCTURE 1-3 DESILT AND INSPECT	8	02NOV08 16:00	02NOV08 23:59	90
R211381105	K	6	10	OMVM		CW	INTAKE STRUCTURE 1-2 DESILT AND INSPECT	8	03NOV08 00:00	03NOV08 07:59	90
R211381103	K	6	10	OMVM		CW	INTAKE STRUCTURE INSPECT WEST OF GRATES	24	03NOV08 08:00	04NOV08 07:59	90
R211381110	K	6	14	OEPB		CW	INTAKE STRUCTURE ENGINEER TO EVALUATE RESULTS	8	04NOV08 08:00	04NOV08 15:59	127
R211381112	K	6	14	OPCE		CW	INTAKE STRUCTURE SAMPLE DUMPSTER	8	04NOV08 19:00	05NOV08 02:59	127



Activity ID	DISP	SPL	MILE	SUPV	P4	SWIN	Activity Description	Orig Dur	Early Start	Early Finish	Total Float
R211381111	K	6	14	OMVM		CW	INTAKE STRUCTURE DEMOBILIZE	4	05NOV08 03:00	05NOV08 06:59	127
2113837											
R211383705	K	6	10	OMW3		CW	Y-3-15 APPLY COATINGS	1	28OCT08 22:00	28OCT08 22:59	123
R211383708	K	6	14	OMMM		CW	Y-3-15 INITIAL SERVICE LEAK TEST	2	31OCT08 10:00	31OCT08 11:59	188
R211383709	K	6	14	OMVM		CW	Y-3-15 INTERNAL INSPECT 72" EX-JOINT	6	31OCT08 10:00	31OCT08 15:59	219
2113838											
R211383809	K	6	22	OMVM		CW	Y-3-30 INTERNAL INSPECT 72" EX-JOINT	6	31OCT08 10:00	31OCT08 15:59	1,471
2113993											
R211399301	K	5	10	OEDM		CC	RBCCW PIPE INSPECTION IN DRYWELL	16	03NOV08 19:00	04NOV08 10:59	82
2114261											
R211426101	K	4	13	OMM3		PC	UNDER INSULATION PIPE INSPECTION IN DW	36	28OCT08 01:00	29OCT08 12:59	264
2114262											
R211426204	P	6	P	OMVS		100	100 ERECT TENT/RIGGING C8-1373 MT	8	26JUN08 08:00	26JUN08 15:59	1,670
R211426215	P	6	P	OPCE		100	100 NOTIFICATION OF WASTE DISPOSAL	1	25AUG08 08:00	25AUG08 08:59	441
R211426202	P	6	P	OMVM		100	100 MOBILIZE	8	22OCT08 09:00	23OCT08 08:59	97
R211426205	K	6	10	OMM3		CW	100 REMOVE MANWAYS	12	25OCT08 19:00	26OCT08 06:59	5
R211426209	K	6	14	OMVM		CW	100 CONFINED SPACE PERMIT	201	25OCT08 19:00	03NOV08 03:59	174
R211426206	K	6	10	OMM3		CW	100 INSTALL PUMPS FOR DE-WATERING	13	26OCT08 07:00	26OCT08 19:59	5
R211426207	K	6	10	OMW1		CW	100 INSTALL LIGHTS & POWER PUMPS	24	26OCT08 20:00	27OCT08 19:59	5
R211426208	K	6	10	OMVM		CW	100 CLEAN INTAKE TUNNEL	98	27OCT08 20:00	31OCT08 21:59	5
R211426201	K	6	10	OMM3		CW	INSIDE INTAKE TUNNEL INSPECTION	72	29OCT08 20:00	01NOV08 19:59	5
R211426214	K	6	10	OMVM		CW	100 CONTINGENCY REPAIR COATINGS / JOINTS	48	30OCT08 20:00	01NOV08 19:59	5
R211426210	K	6	10	OMW1		CW	100 REMOVE LIGHTS & POWER	4	01NOV08 20:00	01NOV08 23:59	5
R211426211	K	6	10	OMVM	Y10	CW	100 INSTALL MANWAYS	2	02NOV08 00:00	02NOV08 01:59	5
R211426212	K	6	10	OMVM		CW	100 PMT INSPECTION ON MANWAYS	2	02NOV08 02:00	02NOV08 03:59	190
R211426213	K	6	14	OMVS		CW	100 REMOVE TENT C8-1373 MT	4	02NOV08 04:00	02NOV08 07:59	190
R211426203	K	6	14	OMVM		CW	100 DEMOBILIZE	8	02NOV08 08:00	02NOV08 15:59	190
2114269											
R211429902	K	4	13	OINS		PC	V-1-7,-8 #353 REMV INSL - V-1-7,-8	8	28OCT08 09:00	28OCT08 16:59	228
R211429901	K	4	13	OMM3		PC	LICENSE RENEWAL MAIN STEAM LINE PIPING INSP	20	28OCT08 17:00	29OCT08 12:59	272
R211429903	K	4	14	OINS		PC	V-1-7,-8 #353 INST INSL - V-1-7,-8	8	09NOV08 12:00	09NOV08 19:59	18



Data Date 26JUN08 08:00
Run Date 26JUN08 15:58

LFV Opening Layout
License Renewal Activities

Oyster Creek
1R22

Sheet 13 of 16

Date	Revision	Checked	Approved

Activity ID	DISP	SPL	MILE	SUPV	P4	SWIN	Activity Description	Orig Dur	Early Start	Early Finish	Total Float	2008																													
												OCT							NOV																						
												17	18	19	20	21	22	23	24	25	26	27	28	29	30	31	1	2	3	4	5	6	7	8	9	10	11	12	13	14	15
2114300																																									
R211430002	K	4	13	OINS		FW	V-2-73-74 #354 REMV INSL - V-2-73-74	5	28OCT08 09:00	28OCT08 13:59	222	■V-2-73-74 #354 REMV INSL - V-2-73-74																													
R211430001	K	4	13	OMM3		PC	INSPECT WATER LINE IN DRYWELL	24	28OCT08 14:00	29OCT08 13:59	266	■INSPECT WATER LINE IN DRYWELL																													
R211430003	K	4	13	OINS		FW	V-2-73-74 #354 INST INSL - V-2-73-74	5	29OCT08 14:00	29OCT08 18:59	222	■V-2-73-74 #354 INST INSL - V-2-73-74																													
2117387																																									
R211738702	K	4	13	OMM3		PC	187 BAY #5 REMOVE SEALANT IN TRENCH	8	28OCT08 09:00	28OCT08 16:59	272	■187 BAY #5 REMOVE SEALANT IN TRENCH																													
R211738703	K	4	13	OMM3		PC	187 BAY #17 REMOVE SEALANT IN TRENCH	8	28OCT08 09:00	28OCT08 16:59	272	■187 BAY #17 REMOVE SEALANT IN TRENCH																													
R211738706	K	4	13	OMM3		PC	187 PREP TRENCHES FOR UT INSP.(CONTINGENCY)	8	28OCT08 17:00	29OCT08 00:59	272	■187 PREP TRENCHES FOR UT INSP.(CONTINGENCY)																													
R211738701	K	4	13	NDE4		PC	187 BAY #5, #17 PERFORM VISUAL INSPECTION	8	29OCT08 01:00	29OCT08 08:59	272	■187 BAY #5, #17 PERFORM VISUAL INSPECTION																													
R211738704	K	4	13	OMWP		PC	187 BAY #5 INSTALL SEALANT IN TRENCH	4	29OCT08 09:00	29OCT08 12:59	272	■187 BAY #5 INSTALL SEALANT IN TRENCH																													
R211738705	K	4	13	OMWP		PC	187 BAY #17 INSTALL SEALANT IN TRENCH	4	29OCT08 09:00	29OCT08 12:59	272	■187 BAY #17 INSTALL SEALANT IN TRENCH																													
2121220																																									
R212122002	K	6	14	OVC1		CW	V-3-13 PERFORM FAC PREP OF PIPING	1	28OCT08 20:00*	28OCT08 20:59	279	IV-3-13 PERFORM FAC PREP OF PIPING																													
R212122001	K	6	14	NDE4		CW	V-3-13 NDE INSPECT UNCOATED CS PIPE IN CW	6	29OCT08 06:00	29OCT08 11:59	138	■V-3-13 NDE INSPECT UNCOATED CS PIPE IN CW																													
2121225																																									
R212122801	K	6	14	NDE4		CW	V-3-12 PERFORM UT INSPECTION OF PIPING	1	27OCT08 14:00	27OCT08 14:59	327	IV-3-12 PERFORM UT INSPECTION OF PIPING																													
R212122802	K	6	14	OVC1		CW	V-3-12 PERFORM FAC PREP OF PIPING	1	30OCT08 14:00*	30OCT08 14:59	255	IV-3-12 PERFORM FAC PREP OF PIPING																													
2121230																																									
R212123003	K	5	10	OINS		CC	V-3-58 #359 REMV INSL - V-3-58	5	25OCT08 13:00	25OCT08 17:59	152	■V-3-58 #359 REMV INSL - V-3-58																													
R212123002	K	5	10	OVC1		CC	V-3-58 PERFORM FAC PREP OF PIPING	4	25OCT08 18:00	25OCT08 21:59	184	■V-3-58 PERFORM FAC PREP OF PIPING																													
R212123001	K	5	10	NDE4		CC	V-3-58 INSPECT COATED CS PIP IN SW SYS	4	26OCT08 06:00	26OCT08 09:59	92	■V-3-58 INSPECT COATED CS PIP IN SW SYS																													
R212123004	K	5	14	OINS		CC	V-3-58 #359 INST INSL - V-3-58	6	26OCT08 10:00	26OCT08 15:59	297	■V-3-58 #359 INST INSL - V-3-58																													
2121407																																									
R212140701	K	6	14	OMM3		CW	FG-3-380 FLOW GLASS FG-3-380	1	31OCT08 12:00	31OCT08 12:59	229	IFG-3-380 FLOW GLASS FG-3-380																													
R212140703	K	6	14	OMM3		CW	FG-3-380 PMT	1	02NOV08 22:00	02NOV08 22:59	177	IFG-3-380 PMT																													
R212140702	K	6	14	OMM3		CW	FG-3-380 PERFORM VISUAL INTERNAL INSP	1	03NOV08 04:00	03NOV08 04:59	176	IFG-3-380 PERFORM VISUAL INTERNAL INSP																													
R212140704	K	6	14	NDE4		CW	FG-3-380 PERFORM VT-3 INSP	1	03NOV08 05:00	03NOV08 05:59	176	IFG-3-380 PERFORM VT-3 INSP																													
2121461																																									
R212146101	K	6	14	OMM3		CW	FI-333-5 REPLACE FI-333-5	1	29OCT08 05:00	29OCT08 05:59	114	IFI-333-5 REPLACE FI-333-5																													
R212146102	K	6	14	OMM3		CW	FI-333-5 PERFORM VISUAL INTERNAL INSP	1	02NOV08 22:00	02NOV08 22:59	182	IFI-333-5 PERFORM VISUAL INTERNAL INSP																													
R212146103	K	6	14	OMM3		CW	FI-333-5 PMT D	1	02NOV08 22:00	02NOV08 22:59	177	IFI-333-5 PMT D																													
R212146104	K	6	14	OMM3		CW	FI-333-5 PERFORM VT-3 INSP	1	02NOV08 23:00	02NOV08 23:59	182	IFI-333-5 PERFORM VT-3 INSP																													

Data Date 26JUN08 08:00
Run Date 26JUN08 15:58

LFV Opening Layout
License Renewal Activities

Oyster Creek
1R22

Sheet 14 of 16

© Primavera Systems, Inc.

Date	Revision	Checked	Approved

Activity ID	DISP	SPL	MILE	SUPV	P4	SWIN	Activity Description	Orig Dur	Early Start	Early Finish	Total Float	2008																													
												OCT							NOV																						
												17	18	19	20	21	22	23	24	25	26	27	28	29	30	31	1	2	3	4	5	6	7	8	9	10	11	12	13	14	15
2121463																																									
R212146301	K	6	14	OMM3		CW	FI-333-9 REPLACE FI-333-9	1	29OCT08 08:00	29OCT08 08:59	282	FI-333-9 REPLACE FI-333-9																													
R212146303	K	6	14	OMM3		CW	FI-333-9 PMT D	1	03NOV08 01:00	03NOV08 01:59	176	FI-333-9 PMT D																													
R212146302	K	6	14	OMM3		CW	FI-333-9 PERFORM VISUAL INTERNAL INSP	1	03NOV08 04:00	03NOV08 04:59	176	FI-333-9 PERFORM VISUAL INTERNAL INSP																													
R212146304	K	6	14	NDE4		CW	FI-333-9 PERFORM VT-3 INSP	1	03NOV08 05:00	03NOV08 05:59	176	FI-333-9 PERFORM VT-3 INSP																													
2121465																																									
R212146501	K	6	14	OMM3		CW	FI-333-11 REPLACE FI-333-11	1	31OCT08 12:00	31OCT08 12:59	229	FI-333-11 REPLACE FI-333-11																													
R212146503	K	6	14	OMM3		CW	FI-333-11 PMT	1	02NOV08 22:00	02NOV08 22:59	177	FI-333-11 PMT																													
R212146502	K	6	14	OMM3		CW	FI-333-11 PERFORM VISUAL INTERNAL INSP	1	03NOV08 04:00	03NOV08 04:59	172	FI-333-11 PERFORM VISUAL INTERNAL INSP																													
R212146504	K	6	14	NDE4		CW	FI-333-11 NDE PERFORM VT-3 INSP	5	03NOV08 05:00	03NOV08 09:59	172	FI-333-11 NDE PERFORM VT-3 INSP																													
2121480																																									
R212148006	K	6	14	OMM3		CW	LI-52 PERFORM VISUAL INTERNAL INSP	1	27OCT08 18:00	27OCT08 18:59	318	LI-52 PERFORM VISUAL INTERNAL INSP																													
R212148009	K	6	14	NDE4		CW	LI-52 NDE PERFORM VT-3 INSP	5	27OCT08 19:00	27OCT08 23:59	318	LI-52 NDE PERFORM VT-3 INSP																													
R212148001	K	6	10	OMM3		CD	LI-3 REPLACE LI-3	1	29OCT08 10:00	29OCT08 10:59	237	LI-3 REPLACE LI-3																													
R212148007	K	6	ZZ	OMM3		CW	LI-56 PERFORM VISUAL INTERNAL INSP	1	31OCT08 10:00	31OCT08 10:59	1,471	LI-56 PERFORM VISUAL INTERNAL INSP																													
R212148010	K	6	ZZ	NDE4		CW	LI-56 NDE PERFORM VT-3 INSP	5	31OCT08 11:00	31OCT08 15:59	1,471	LI-56 NDE PERFORM VT-3 INSP																													
R212148004	K	6	12	OMM3		CD	LI-3/LI-52/LI-56 LEAK TEST	1	07NOV08 03:00	07NOV08 03:59	60	LI-3/LI-52/LI-56 LEAK TEST																													
R212148008	K	6	15	NDE4		CD	LI-3 NDE PERFORM VT-3 INSP	5	07NOV08 06:00	07NOV08 10:59	655	LI-3 NDE PERFORM VT-3 INSP																													
R212148005	K	6	15	OMM3		CD	LI-3 PERFORM VISUAL INTERNAL INSP	1	07NOV08 11:00	07NOV08 11:59	1,307	LI-3 PERFORM VISUAL INTERNAL INSP																													
2121587																																									
R212158701	K	6	10	OMM3		CW	V-3-125 REMOVE/REPLACE VALVE	1	25OCT08 21:00	25OCT08 21:59	190	V-3-125 REMOVE/REPLACE VALVE																													
R212158702	K	6	10	OEPP		CW	V-3-125 INSPECT VALVE INTERNALS	1	25OCT08 22:00	25OCT08 22:59	194	V-3-125 INSPECT VALVE INTERNALS																													
R212158703	K	6	14	OMM3		CW	V-3-125 PMT	1	02NOV08 20:00	02NOV08 20:59	184	V-3-125 PMT																													
R212158704	K	6	14	NDE4		CW	V-3-125 VT-3 INSPECTION	1	04NOV08 09:00	04NOV08 09:59	148	V-3-125 VT-3 INSPECTION																													
2121590																																									
R212159005	P	5	P	OMVS		SW	V-3-58 C8-1365 ERECT RIGGING SCAFFOLD	6	29SEP08 08:00	29SEP08 13:59	194																														
R212159001	K	5	10	OMM3	Y10	SW	V-3-58 REPLACE V-3-58	8	02NOV08 09:00	02NOV08 16:59	5	V-3-58 REPLACE V-3-58																													
R212159002	K	5	16	OEPP		SW	V-3-58 INSPECT VALVE INTERNALS	8	03NOV08 19:00	04NOV08 02:59	269	V-3-58 INSPECT VALVE INTERNALS																													
R212159006	P	5	P	OMVS		CW	V-3-58 C8-1365 REMOVE RIGGING SCAFFOLD	4	04NOV08 08:00	04NOV08 11:59	332	V-3-58 C8-1365 REMOVE RIGGING SCAFFOLD																													
R212159003	K	5	14	OMM3		SW	V-3-58 PMT	8	07NOV08 19:00	08NOV08 02:59	59	V-3-58 PMT																													
R212159004	K	5	16	NDE4		SW	V-3-58 VT-3 INSPECTION	8	07NOV08 19:00	08NOV08 02:59	181	V-3-58 VT-3 INSPECTION																													

Data Date 26JUN08 08:00 LFV Opening Layout
Run Date 26JUN08 15:58 License Renewal Activities

© Primavera Systems, Inc.

Oyster Creek
1R22

Sheet 15 of 16

Date	Revision	Checked	Approved

Activity ID	DISP	SPL	MILE	SUPV	P4	SWIN	Activity Description	Orig Dur	Early Start	Early Finish	Total Float	2008																													
												OCT							NOV																						
												17	18	19	20	21	22	23	24	25	26	27	28	29	30	31	1	2	3	4	5	6	7	8	9	10	11	12	13	14	15
2121592																																									
R212159201	K	6	10	OMM3		CW	V-3-110 REPLACE VALVE	1	25OCT08 21:00	25OCT08 21:59	190	IV-3-110 REPLACE VALVE																													
R212159202	K	6	14	OEPPE		CW	V-3-110 INSPECT VALVE INTERNALS	1	02NOV08 20:00	02NOV08 20:59	184	IV-3-110 INSPECT VALVE INTERNALS																													
R212159204	K	6	14	NDE4		CW	V-3-110 VT-3 INSPECTION	1	02NOV08 21:00	02NOV08 21:59	184	IV-3-110 VT-3 INSPECTION																													
2121963																																									
R212196301	K	6	14	OMM3		CW	V-3-13 INSPECT INTERALS	1	27OCT08 15:00	27OCT08 15:59	325	IV-3-13 INSPECT INTERALS																													
R212196302	K	6	14	NDE4		CW	V-3-13 VT-3 INSPECTION	1	27OCT08 16:00	27OCT08 16:59	325	IV-3-13 VT-3 INSPECTION																													
2122300																																									
R212230001	K	4	13	OEDM		PC	TORUS INSPECT TORUS	1	27OCT08 17:00	27OCT08 17:59	315	ITORUS INSPECT TORUS																													
2122551																																									
R212255101	K	6	14	OMM3		CW	S-3-24 REMOVE STRAINER FOR INSPECTION	1	31OCT08 14:00	31OCT08 14:59	231	IS-3-24 REMOVE STRAINER FOR INSPECTION																													
R212255102	K	6	14	OMM3		CW	S-3-24 INSPECT ONE COPPER ALLOY STRNR	1	02NOV08 22:00	02NOV08 22:59	183	IS-3-24 INSPECT ONE COPPER ALLOY STRNR																													
R212255103	K	6	14	OMM3		CW	S-3-24 PMT	1	02NOV08 22:00	02NOV08 22:59	177	IS-3-24 PMT																													
2122565																																									
R212256501	K	6	10	OMM3		CW	TE-26 INSP WATER SIDE OF 4 CIRC WTR THERMOWELLS	1	25OCT08 22:00	25OCT08 22:59	193	ITE-26 INSP WATER SIDE OF 4 CIRC WTR THERMOWELLS																													
R212256502	K	6	10	OMM3		CW	TE-26 SPECIAL PERMIT ACTIVITY	1	25OCT08 22:00	25OCT08 22:59	195	ITE-26 SPECIAL PERMIT ACTIVITY																													
2122575																																									
R212257501	K	6	10	OMM3		CW	V-3-1041 PERFORM INTERNAL INSPECTION (LRA)	1	29OCT08 07:00	29OCT08 07:59	108	IV-3-1041 PERFORM INTERNAL INSPECTION (LRA)																													
2122597																																									
R212259701	R	3		OMM2		MI	775 PERFORM CABLE INSP IN THE COND BAY LRA	4	26JUN08 09:00	26JUN08 12:59	4,521																														
R212259702	R	3		OMM2		MI	775 CABLE INSP IN TRUNION ROOM LRA	2	26JUN08 09:00	26JUN08 10:59	4,523																														
R212259703	R	3		OMM2		MI	775 CABLE INSP IN DRYWELL LRA	8	26JUN08 09:00	26JUN08 16:59	4,517																														

Data Date 26JUN08 08:00 LFV Opening Layout
 Run Date 26JUN08 15:58 License Renewal Activities

Oyster Creek
1R22

Sheet 16 of 16

© Primavera Systems, Inc.

Date	Revision	Checked	Approved