

C/14

Activity ID	DISP	SPL	MILE	SUPV	P4	SWIN	Activity Description	Orig Dur	Early Start	Early Finish	Total Float	2008																													
												OCT							NOV																						
												17	18	19	20	21	22	23	24	25	26	27	28	29	30	31	1	2	3	4	5	6	7	8	9	10	11	12	13	14	15
<b>2088495</b>																																									
J208849501	T	4	12	OEPB		PC	LEAKAGE MONITOR TORUS, SANDBEDS & RX DRAIN	3	29OCT08 02:00	29OCT08 04:59	210	■LEAKAGE MONITOR TORUS, SANDBEDS & RX DRAIN																													
J208849502	T	4	12	OEPB		PC	LEAKAGE MONITOR TORUS, SANDBEDS & RX DRAIN	3	29OCT08 05:00	29OCT08 07:59	210	■LEAKAGE MONITOR TORUS, SANDBEDS & RX DRAIN																													
J208849503	T	4	12	OEPB		PC	LEAKAGE MONITOR TORUS, SANDBEDS & RX DRAIN	3	29OCT08 08:00	29OCT08 10:59	210	■LEAKAGE MONITOR TORUS, SANDBEDS & RX DRAIN																													
J208849504	T	4	12	OEPB		PC	LEAKAGE MONITOR TORUS, SANDBEDS & RX DRAIN	3	29OCT08 11:00	29OCT08 13:59	210	■LEAKAGE MONITOR TORUS, SANDBEDS & RX DRAIN																													
J208849505	T	4	12	OEPB		PC	LEAKAGE MONITOR TORUS, SANDBEDS & RX DRAIN	3	29OCT08 14:00	29OCT08 16:59	210	■LEAKAGE MONITOR TORUS, SANDBEDS & RX DRAIN																													
J208849506	T	4	12	OEPB		PC	LEAKAGE MONITOR TORUS, SANDBEDS & RX DRAIN	3	29OCT08 17:00	29OCT08 19:59	210	■LEAKAGE MONITOR TORUS, SANDBEDS & RX DRAIN																													
J208849507	T	4	12	OEPB		PC	LEAKAGE MONITOR TORUS, SANDBEDS & RX DRAIN	3	29OCT08 20:00	29OCT08 22:59	210	■LEAKAGE MONITOR TORUS, SANDBEDS & RX DRAIN																													
J208849508	T	4	12	OEPB		PC	LEAKAGE MONITOR TORUS, SANDBEDS & RX DRAIN	3	29OCT08 23:00	30OCT08 01:59	210	■LEAKAGE MONITOR TORUS, SANDBEDS & RX DRAIN																													
J208849509	T	4	12	OEPB		PC	LEAKAGE MONITOR TORUS, SANDBEDS & RX DRAIN	3	30OCT08 02:00	30OCT08 04:59	210	■LEAKAGE MONITOR TORUS, SANDBEDS & RX DRAIN																													
J208849510	T	4	12	OEPB		PC	LEAKAGE MONITOR TORUS, SANDBEDS & RX DRAIN	3	30OCT08 05:00	30OCT08 07:59	210	■LEAKAGE MONITOR TORUS, SANDBEDS & RX DRAIN																													
J208849511	T	4	12	OEPB		PC	LEAKAGE MONITOR TORUS, SANDBEDS & RX DRAIN	3	30OCT08 08:00	30OCT08 10:59	210	■LEAKAGE MONITOR TORUS, SANDBEDS & RX DRAIN																													
J208849512	T	4	12	OEPB		PC	LEAKAGE MONITOR TORUS, SANDBEDS & RX DRAIN	3	30OCT08 11:00	30OCT08 13:59	210	■LEAKAGE MONITOR TORUS, SANDBEDS & RX DRAIN																													
<b>2088903</b>																																									
J2088903A3	T	4	13	OPRF	H25	PC	RAD PRO SURVEY - DOWN POST TOP OF TORUS	6	27OCT08 17:00	27OCT08 22:59	310	■RAD PRO SURVEY - DOWN POST TOP OF TORUS																													
J2088903R5	T	4	13	OPRF	H25	PC	BAY 1 RP SURVEY AFTER SHIELD BAG REMOVAL	1	27OCT08 17:00	27OCT08 17:59	315	■BAY 1 RP SURVEY AFTER SHIELD BAG REMOVAL																													
J2088903R6	T	4	13	OPRF	H25	PC	BAY 1 ROV VIDEO	1	27OCT08 17:00	27OCT08 17:59	315	■BAY 1 ROV VIDEO																													
J2088903TR	T	4	XX	OCC	H25	PC	NOTIFY T. RAUSCH OF BAY 1 SAND BED LINER INSPECT	0	27OCT08 17:00		1,566	◆NOTIFY T. RAUSCH OF BAY 1 SAND BED LINER INSPECT																													
<b>2088905</b>																																									
J2088905R5	T	4	13	OPRF	H25	PC	BAY 5 RP SURVEY AFTER SHIELD BAG REMOVAL	1	27OCT08 17:00	27OCT08 17:59	315	■BAY 5 RP SURVEY AFTER SHIELD BAG REMOVAL																													
<b>2088906</b>																																									
J2088906R5	T	4	13	OPRF	H25	PC	BAY 7 RP SURVEY AFTER SHIELD BAG REMOVAL	1	27OCT08 17:00	27OCT08 17:59	315	■BAY 7 RP SURVEY AFTER SHIELD BAG REMOVAL																													
J2088906R6	T	4	13	OPRF	H25	PC	BAY 7 ROV VIDEO	1	27OCT08 17:00	27OCT08 17:59	315	■BAY 7 ROV VIDEO																													
<b>2088918</b>																																									
J2088918R5	T	4	13	OPRF	H25	PC	BAY 9 RP SURVEY AFTER SHIELD BAG REMOVAL	1	27OCT08 17:00	27OCT08 17:59	315	■BAY 9 RP SURVEY AFTER SHIELD BAG REMOVAL																													
J2088918R6	T	4	13	OPRF	H25	PC	BAY 9 ROV VIDEO	1	27OCT08 17:00	27OCT08 17:59	315	■BAY 9 ROV VIDEO																													
<b>2088920</b>																																									
J2088920R5	T	4	13	OPRF	H25	PC	BAY 13 RP SURVEY AFTER SHIELD BAG REMOVAL	1	27OCT08 17:00	27OCT08 17:59	315	■BAY 13 RP SURVEY AFTER SHIELD BAG REMOVAL																													
J2088920R6	T	4	13	OPRF	H25	PC	BAY 13 ROV VIDEO	1	27OCT08 17:00	27OCT08 17:59	315	■BAY 13 ROV VIDEO																													
J2088920TR	T	4	XX	OCC	H25	PC	NOTIFY T. RAUSCH OF BAY 13 SAND BED LINER INSPEC	0	27OCT08 17:00		1,566	◆NOTIFY T. RAUSCH OF BAY 13 SAND BED LINER INSPEC																													
<b>2088924</b>																																									
J2088924R5	T	4	13	OPRF	H25	PC	BAY 15 RP SURVEY AFTER SHIELD BAG REMOVAL	1	27OCT08 17:00	27OCT08 17:59	315	■BAY 15 RP SURVEY AFTER SHIELD BAG REMOVAL																													

Data Date 26JUN08 08:00  
 Run Date 26JUN08 15:58

LFV Opening Layout License Renewal Activities

Oyster Creek 1R22

Sheet 1 of 16

© Primavera Systems, Inc.

Date	Revision	Checked	Approved



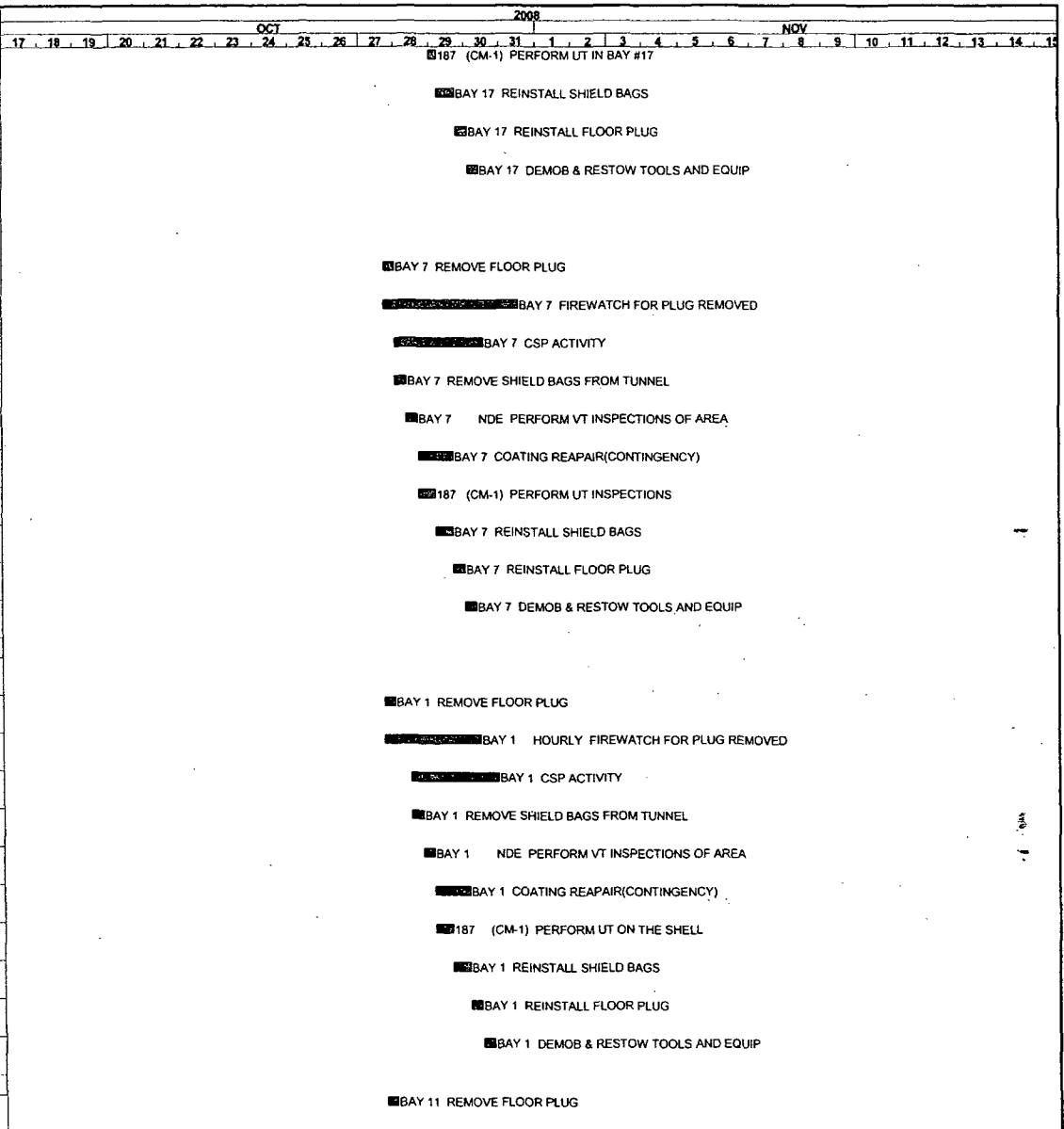






Activity ID	DISP	SPL	MILE	SUPV	P4	SWIN	Activity Description	Orig Dur	Early Start	Early Finish	Total Float	2008																													
												OCT							NOV																						
<b>2094317</b>												17	18	19	20	21	22	23	24	25	26	27	28	29	30	31	1	2	3	4	5	6	7	8	9	10	11	12	13	14	15
R209431701	T	4	13	OMI1		MS	V-1-7 (NS03-A); GL 88-14 INST. AIR LEAK TEST.	8	29OCT08 18:00	30OCT08 01:59	267	■ V-1-7 (NS03-A): GL 88-14 INST. AIR LEAK TEST.																													
R209431702	K	4	13	SSV5		MS	V-1-7 SUPPORT VALVE STROKE	1	29OCT08 18:00	29OCT08 18:59	283	■ V-1-7 SUPPORT VALVE STROKE																													
<b>2094450</b>																																									
R209445001	T	3	07	OMI3	ST2	A4	ST645.6.017 1D SWITCHGEAR INSPECTION POINTS	2	01NOV08 11:00	01NOV08 12:59	141	■ ST645.6.017 1D SWITCHGEAR INSPECTION POINTS																													
<b>2094520</b>																																									
R209452001	T	2	14	OMI1		NI	SRM/IRM JUMPERIN . AND MEGGER (IR) TESTS	12	02NOV08 10:00	02NOV08 21:59	171	■ SRM/IRM JUMPERIN . AND MEGGER (IR) TESTS																													
R209452002	K	2	14	OMI1		NI	CABLE RESTORATIO N AND PMT	4	08NOV08 18:00	08NOV08 21:59	31	■ CABLE RESTORATIO N AND PMT																													
<b>2094526</b>																																									
R209452504	T	2	14	OMI1		NI	SRM CHAR TEST 2400-SMI-3623.03 (OUTAGE)	5	04NOV08 06:00	04NOV08 10:59	161	■ SRM CHAR TEST 2400-SMI-3623.03 (OUTAGE)																													
<b>2094623</b>																																									
R209462303	P	4	P	OMW1		187	BAY 9 SET-UP, STAGE TOOLS, AND EQUIP	16	26JUN08 08:00*	27JUN08 15:59	760																														
R209462301	K	4	13	OMW1		PC	BAY 9 REMOVE FLOOR PLUGS	8	27OCT08 17:00	28OCT08 00:59	224	■ BAY 9 REMOVE FLOOR PLUGS																													
R209462302	K	4	13	OMW1		PC	BAY 9 FIREWATCH FOR PLUG REMOVED	92	27OCT08 17:00	31OCT08 12:59	224	■ BAY 9 FIREWATCH FOR PLUG REMOVED																													
R209462305	K	4	13	OMW1		PC	BAY 9 REMOVE SHIELD BAGS FROM TUNNEL	8	28OCT08 01:00	28OCT08 08:59	240	■ BAY 9 REMOVE SHIELD BAGS FROM TUNNEL																													
R209462304	K	4	13	OMW1		PC	BAY 9 CSP ACTIVITY	60	28OCT08 09:00	30OCT08 20:59	240	■ BAY 9 CSP ACTIVITY																													
R209462306	K	4	13	NDE4		PC	BAY 9 NDE PERFORM VT INSPECTIONS OF AREA	8	28OCT08 09:00	28OCT08 16:59	240	■ BAY 9 NDE PERFORM VT INSPECTIONS OF AREA																													
R209462311	K	4	13	OMVS		PC	187 MODIFY GRATING PLATFORM (CONT)	8	28OCT08 09:00	28OCT08 16:59	292	■ 187 MODIFY GRATING PLATFORM (CONT)																													
R209462307	K	4	13	OMW1		PC	BAY 9 COATING REPAIR(CONTINGENCY)	24	28OCT08 17:00	29OCT08 16:59	268	■ BAY 9 COATING REPAIR(CONTINGENCY)																													
R209462312	K	4	13	NDE4		PC	187 (CM-1) PERFORM UT INSPECTIONS	12	28OCT08 17:00	29OCT08 04:59	268	■ 187 (CM-1) PERFORM UT INSPECTIONS																													
R209462309	K	4	14	OMW1		PC	BAY 9 DEMOB & RESTOW TOOLS AND EQUIP	8	29OCT08 05:00	29OCT08 12:59	269	■ BAY 9 DEMOB & RESTOW TOOLS AND EQUIP																													
R209462308	K	4	14	OMW1		PC	BAY 9 REINSTALL SHIELD BAGS	12	29OCT08 13:00	30OCT08 00:59	269	■ BAY 9 REINSTALL SHIELD BAGS																													
R209462310	K	4	14	OMW1		PC	BAY 9 REINSTALL FLOOR PLUG	8	30OCT08 01:00	30OCT08 08:59	269	■ BAY 9 REINSTALL FLOOR PLUG																													
<b>2095487</b>																																									
R209546703	P	4	P	OMW1		187	BAY 17 SET-UP, STAGE TOOLS, AND EQUIP	16	26JUN08 08:00*	27JUN08 15:59	760																														
R209546701	K	4	13	OMW1		PC	BAY 17 REMOVE FLOOR PLUG	8	27OCT08 17:00	28OCT08 00:59	224	■ BAY 17 REMOVE FLOOR PLUG																													
R209546702	K	4	13	OMW1		PC	BAY 17 FIREWATCH FOR PLUG REMOVED	92	27OCT08 17:00	31OCT08 12:59	224	■ BAY 17 FIREWATCH FOR PLUG REMOVED																													
R209546704	K	4	13	OMW1		PC	BAY 17 CSP ACTIVITY	60	28OCT08 11:00	30OCT08 22:59	238	■ BAY 17 CSP ACTIVITY																													
R209546705	K	4	13	OMW1		PC	BAY 17 REMOVE SHIELD BAGS FROM TUNNEL	8	28OCT08 11:00	28OCT08 18:59	238	■ BAY 17 REMOVE SHIELD BAGS FROM TUNNEL																													
R209546706	K	4	13	NDE4		PC	BAY 17 NDE PERFORM VT INSPECTIONS OF AREA	5	28OCT08 19:00	28OCT08 23:59	259	■ BAY 17 NDE PERFORM VT INSPECTIONS OF AREA																													
R209546707	K	4	13	OMW1		PC	BAY 17 COATING REPAIR(CONTINGENCY)	24	29OCT08 00:00	29OCT08 23:59	261	■ BAY 17 COATING REPAIR(CONTINGENCY)																													
Data Date	26JUN08 08:00							LFV Opening Layout					Sheet 6 of 16																												
Run Date	26JUN08 15:58							License Renewal Activities	Oyster Creek 1R22				Date	Revision	Checked	Approved																									
© Primavera Systems, Inc.																																									

Activity ID	DISP	SPL	MILE	SUPV	P4	SWIN	Activity Description	Orig Dur	Early Start	Early Finish	Total Float
R209546711	K	4	13	NDE4		PC	187 (CM-1) PERFORM UT IN BAY #17	6	29OCT08 00:00	29OCT08 05:59	259
R209546708	K	4	13	OMW1		PC	BAY 17 REINSTALL SHIELD BAGS	12	29OCT08 06:00	29OCT08 17:59	259
R209546710	K	4	13	OMW1		PC	BAY 17 REINSTALL FLOOR PLUG	8	29OCT08 18:00	30OCT08 01:59	259
R209546709	K	4	14	OMW1		PC	BAY 17 DEMOB & RESTOW TOOLS AND EQUIP	8	30OCT08 02:00	30OCT08 09:59	268
<b>2095468</b>											
R209546803	P	4	P	OMW1		187	BAY 7 SET-UP, STAGE TOOLS, AND EQUIP	16	26JUN08 08:00*	27JUN08 15:59	760
R209546801	K	4	13	OMW1		PC	BAY 7 REMOVE FLOOR PLUG	8	27OCT08 17:00	28OCT08 00:59	224
R209546802	K	4	13	OMW1		PC	BAY 7 FIREWATCH FOR PLUG REMOVED	92	27OCT08 17:00	31OCT08 12:59	224
R209546804	K	4	13	OMW1		PC	BAY 7 CSP ACTIVITY	60	28OCT08 01:00	30OCT08 12:59	248
R209546805	K	4	13	OMW1		PC	BAY 7 REMOVE SHIELD BAGS FROM TUNNEL	8	28OCT08 01:00	28OCT08 08:59	248
R209546806	K	4	13	NDE4		PC	BAY 7 NDE PERFORM VT INSPECTIONS OF AREA	8	28OCT08 09:00	28OCT08 16:59	260
R209546807	K	4	13	OMW1		PC	BAY 7 COATING REPAIR(CONTINGENCY)	24	28OCT08 17:00	29OCT08 16:59	268
R209546812	K	4	13	NDE4		PC	187 (CM-1) PERFORM UT INSPECTIONS	12	28OCT08 17:00	29OCT08 04:59	260
R209546808	K	4	13	OMW1		PC	BAY 7 REINSTALL SHIELD BAGS	12	29OCT08 05:00	29OCT08 16:59	260
R209546810	K	4	13	OMW1		PC	BAY 7 REINSTALL FLOOR PLUG	8	29OCT08 17:00	30OCT08 00:59	260
R209546809	K	4	14	OMW1		PC	BAY 7 DEMOB & RESTOW TOOLS AND EQUIP	8	30OCT08 01:00	30OCT08 08:59	269
<b>2095469</b>											
R209546903	P	4	P	OMW1		187	BAY 1 SET-UP, STAGE TOOLS, AND EQUIP	16	26JUN08 08:00*	27JUN08 15:59	760
R209546901	K	4	13	OMW1		PC	BAY 1 REMOVE FLOOR PLUG	8	27OCT08 17:00	28OCT08 00:59	248
R209546902	K	4	14	OMW1		PC	BAY 1 HOURLY FIREWATCH FOR PLUG REMOVED	66*	27OCT08 17:00	30OCT08 10:59	259
R209546904	K	4	13	OMW1		PC	BAY 1 CSP ACTIVITY	60	28OCT08 11:00	30OCT08 22:59	238
R209546905	K	4	13	OMW1		PC	BAY 1 REMOVE SHIELD BAGS FROM TUNNEL	8	28OCT08 11:00	28OCT08 18:59	238
R209546906	K	4	13	NDE4		PC	BAY 1 NDE PERFORM VT INSPECTIONS OF AREA	8	28OCT08 19:00	29OCT08 02:59	258
R209546907	K	4	13	OMW1		PC	BAY 1 COATING REPAIR(CONTINGENCY)	24	29OCT08 03:00	30OCT08 02:59	258
R209546912	K	4	13	NDE4		PC	187 (CM-1) PERFORM UT ON THE SHELL	12	29OCT08 03:00	29OCT08 14:59	258
R209546908	K	4	13	OMW1		PC	BAY 1 REINSTALL SHIELD BAGS	12	29OCT08 15:00	30OCT08 02:59	258
R209546910	K	4	14	OMW1		PC	BAY 1 REINSTALL FLOOR PLUG	8	30OCT08 03:00	30OCT08 10:59	259
R209546909	K	4	14	OMW1		PC	BAY 1 DEMOB & RESTOW TOOLS AND EQUIP	8	30OCT08 11:00	30OCT08 18:59	259
<b>2095471</b>											
R209547101	K	4	13	OMW1		PC	BAY 11 REMOVE FLOOR PLUG	8	27OCT08 17:00	28OCT08 00:59	216



Data Date: 26JUN08 08:00  
 Run Date: 26JUN08 15:58

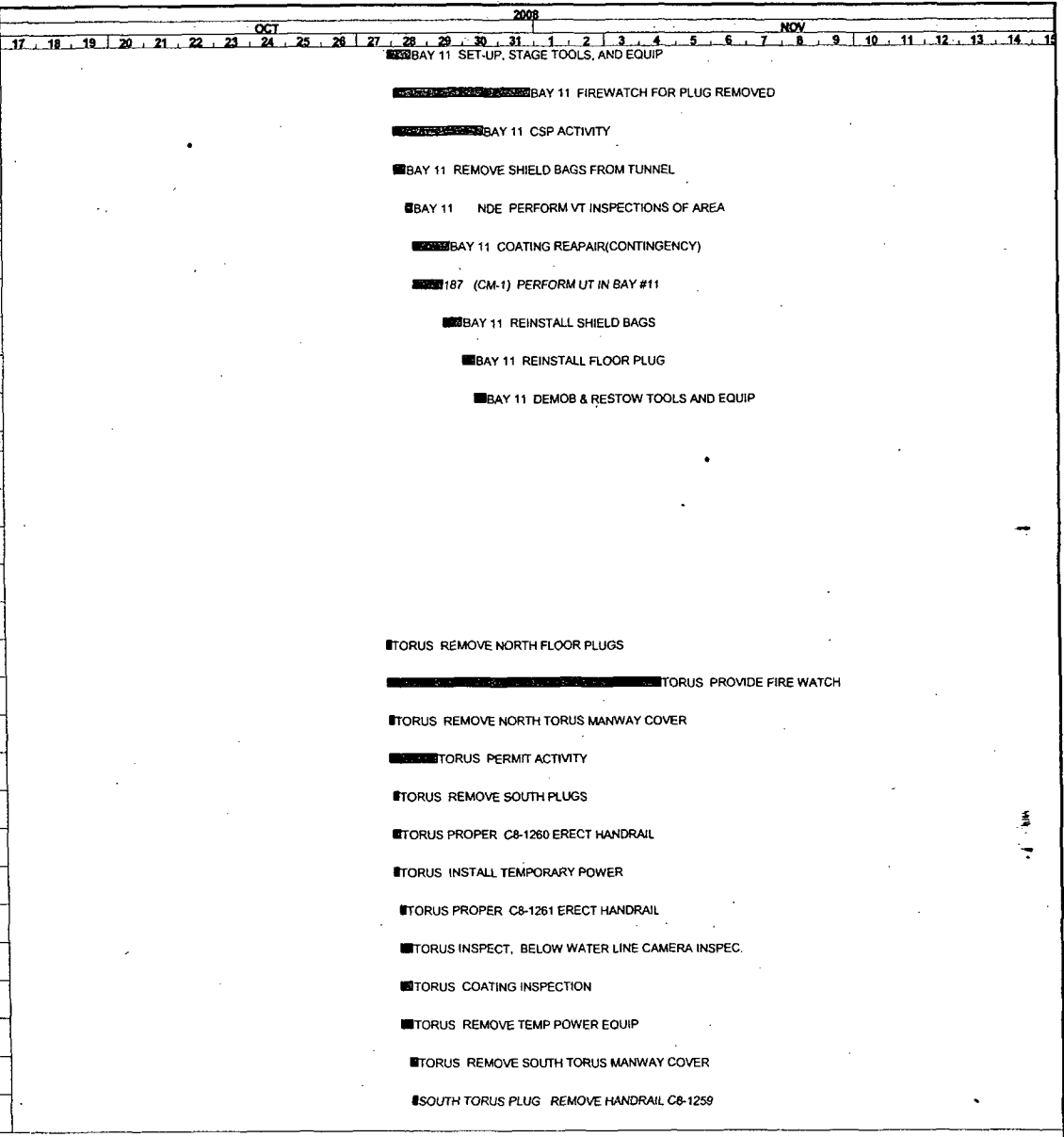
LFV Opening Layout  
 License Renewal Activities

Oyster Creek  
 1R22

Sheet 7 of 16

Date	Revision	Checked	Approved

Activity ID	DISP	SPL	MILE	SUPV	P4	SWIN	Activity Description	Orig Dur	Early Start	Early Finish	Total Float
R209547103	P	4	P	OMW1		187	BAY 11 SET-UP, STAGE TOOLS, AND EQUIP	16	27OCT08 21:00*	28OCT08 12:59	296
R209547102	K	4	13	OMW1		PC	BAY 11 FIREWATCH FOR PLUG REMOVED	92	28OCT08 01:00	31OCT08 20:59	216
R209547104	K	4	13	OMW1		PC	BAY 11 CSP ACTIVITY	60	28OCT08 01:00	30OCT08 12:59	248
R209547105	K	4	13	OMW1		PC	BAY 11 REMOVE SHIELD BAGS FROM TUNNEL	8	28OCT08 01:00	28OCT08 08:59	248
R209547106	K	4	13	NDE4		PC	BAY 11 NDE PERFORM VT INSPECTIONS OF AREA	5	28OCT08 09:00	28OCT08 13:59	255
R209547107	K	4	13	OMW1		PC	BAY 11 COATING REPAIR(CONTINGENCY)	24	28OCT08 14:00	29OCT08 13:59	271
R209547111	K	4	13	NDE4		PC	187 (CM-1) PERFORM UT IN BAY #11	20	28OCT08 14:00	29OCT08 09:59	255
R209547108	K	4	13	OMW1		PC	BAY 11 REINSTALL SHIELD BAGS	12	29OCT08 10:00	29OCT08 21:59	255
R209547110	K	4	13	OMW1		PC	BAY 11 REINSTALL FLOOR PLUG	8	29OCT08 22:00	30OCT08 05:59	255
R209547109	K	4	14	OMW1		PC	BAY 11 DEMOB & RESTOW TOOLS AND EQUIP	8	30OCT08 06:00	30OCT08 13:59	264
<b>2095647</b>											
R209564731	P	4	P	OMM3		187	TORUS DOP TEST HEPA UNIT	8	26JUN08 08:00	26JUN08 15:59	768
R209564729	P	6	P	OMVS		187	TORUS MOBE & SET UP GANTRY	8	04SEP08 08:00*	04SEP08 15:59	368
R209564723	P	6	P	OMVS		187	RAMP UP FABRICATE FLANGE PROTEC. COVERS	12	06OCT08 08:00*	07OCT08 11:59	188
R209564703	P	6	P	OMVS		187	NORTH TORUS PLUG C8-1258 ERECT HANDRAIL	4	13OCT08 08:00*	13OCT08 11:59	460
R209564704	P	6	P	OMVS		187	SOUTH TORUS PLUG C8-1259 ERECT HANDRAIL	6	13OCT08 08:00*	13OCT08 13:59	458
R209564701	T	4	13	OMVC	310	PC	TORUS REMOVE NORTH FLOOR PLUGS	4	27OCT08 17:00	27OCT08 20:59	274
R209564717	T	4	14	OMVC	330	PC	TORUS PROVIDE FIRE WATCH	186*	27OCT08 17:00	04NOV08 10:59	147
R209564705	T	4	13	OMVM	31N	PC	TORUS REMOVE NORTH TORUS MANWAY COVER	4	27OCT08 19:00	27OCT08 22:59	304
R209564720	T	4	13	OMVM	330	PC	TORUS PERMIT ACTIVITY	32*	27OCT08 19:00	28OCT08 02:59	274
R209564702	T	4	13	OMVC	310	PC	TORUS REMOVE SOUTH PLUGS	4	27OCT08 21:00	28OCT08 00:59	296
R209564707	T	4	13	OMVS	310	PC	TORUS PROPER C8-1260 ERECT HANDRAIL	6	27OCT08 21:00	28OCT08 02:59	306
R209564725	T	4	13	OMW1	310	PC	TORUS INSTALL TEMPORARY POWER	4	27OCT08 21:00	28OCT08 00:59	274
R209564708	T	4	13	OMVS	310	PC	TORUS PROPER C8-1261 ERECT HANDRAIL	4	28OCT08 01:00	28OCT08 04:59	296
R209564709	T	4	13	ROV1	330	PC	TORUS INSPECT, BELOW WATER LINE CAMERA INSPEC.	8	28OCT08 01:00	28OCT08 08:59	282
R209564722	T	4	13	NDE4	320	PC	TORUS COATING INSPECTION	8	28OCT08 01:00	28OCT08 08:59	274
R209564727	T	4	13	OMW1	3X1	PC	TORUS REMOVE TEMP POWER EQUIP	8	28OCT08 01:00	28OCT08 08:59	282
R209564706	T	4	13	OMVM	31S	PC	TORUS REMOVE SOUTH TORUS MANWAY COVER	4	28OCT08 07:00	28OCT08 10:59	296
R209564714	P	6	P	OMVS		187	SOUTH TORUS PLUG REMOVE HANDRAIL C8-1259	3	28OCT08 08:00	28OCT08 10:59	373



Data Date 26JUN08 08:00  
 Run Date 26JUN08 15:58

LFV Opening Layout  
 License Renewal Activities

Oyster Creek  
 1R22

Sheet 8 of 16

Date	Revision	Checked	Approved

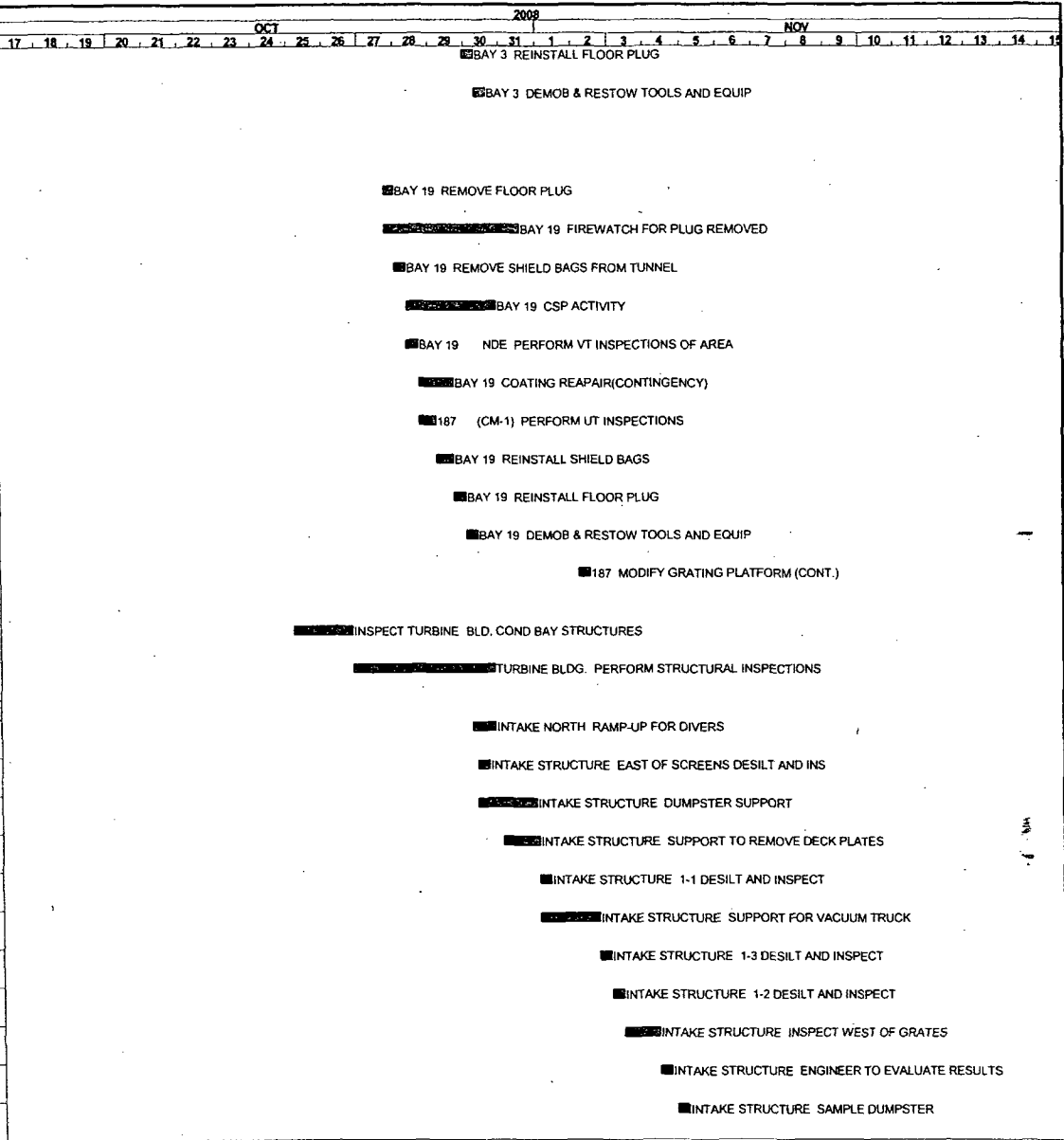








Activity ID	DISP	SPL	MILE	SUPV	P4	SWIN	Activity Description	Orig Dur	Early Start	Early Finish	Total Float
R210551510	K	4	13	OMW1		PC	BAY 3 REINSTALL FLOOR PLUG	8	29OCT08 23:00	30OCT08 06:59	254
R210551509	K	4	16	OMW1		PC	BAY 3 DEMOB & RESTOW TOOLS AND EQUIP	8	30OCT08 07:00	30OCT08 14:59	385
<b>2105516</b>											
R210551603	P	4	P	OMW1		PC	BAY 19 SET-UP, STAGE TOOLS, AND EQUIP	16	26JUN08 08:00	27JUN08 15:59	760
R210551601	K	4	13	OMW1		PC	BAY 19 REMOVE FLOOR PLUG	8	27OCT08 17:00	28OCT08 00:59	224
R210551602	K	4	13	OMW1		PC	BAY 19 FIREWATCH FOR PLUG REMOVED	92	27OCT08 17:00	31OCT08 12:59	224
R210551605	K	4	13	OMW1		PC	BAY 19 REMOVE SHIELD BAGS FROM TUNNEL	8	28OCT08 01:00	28OCT08 08:59	240
R210551604	K	4	13	OMW1		PC	BAY 19 CSP ACTIVITY	60	28OCT08 09:00	30OCT08 20:59	240
R210551606	K	4	13	NDE4		PC	BAY 19 NDE PERFORM VT INSPECTIONS OF AREA	8	28OCT08 09:00	28OCT08 16:59	260
R210551607	K	4	13	OMW1		PC	BAY 19 COATING REPAIR(CONTINGENCY)	24	28OCT08 17:00	29OCT08 16:59	268
R210551612	K	4	13	NDE4		PC	187 (CM-1) PERFORM UT INSPECTIONS	12	28OCT08 17:00	29OCT08 04:59	260
R210551608	K	4	13	OMW1		PC	BAY 19 REINSTALL SHIELD BAGS	12	29OCT08 05:00	29OCT08 16:59	260
R210551610	K	4	13	OMW1		PC	BAY 19 REINSTALL FLOOR PLUG	8	29OCT08 17:00	30OCT08 00:59	260
R210551609	K	4	16	OMW1		PC	BAY 19 DEMOB & RESTOW TOOLS AND EQUIP	8	30OCT08 01:00	30OCT08 08:59	391
R210551611	K	4	13	OMVS		PC	187 MODIFY GRATING PLATFORM (CONT.)	8	02NOV08 04:00*	02NOV08 11:59	177
<b>2105563</b>											
R210556301	T	5	14	OEDM		MI	INSPECT TURBINE BLD, COND BAY STRUCTURES	40	25OCT08 03:00	26OCT08 18:59	259
R210556302	T	5	14	OEDM		MI	TURBINE BLDG. PERFORM STRUCTURAL INSPECTIONS	96	26OCT08 19:00	30OCT08 18:59	259
<b>2113811</b>											
R211381101	K	6	10	OMVM		CW	INTAKE NORTH RAMP-UP FOR DIVERS	16	30OCT08 04:00	30OCT08 19:59	90
R211381107	K	6	10	OMVM		CW	INTAKE STRUCTURE EAST OF SCREENS DESILT AND INS	8	30OCT08 07:00	30OCT08 14:59	50
R211381108	K	6	10	OMVM		CW	INTAKE STRUCTURE DUMPSTER SUPPORT	40	30OCT08 07:00	31OCT08 22:59	50
R211381102	K	6	10	OMVM		CW	INTAKE STRUCTURE SUPPORT TO REMOVE DECK PLATES	24	31OCT08 00:00	31OCT08 23:59	90
R211381106	K	6	10	OMVM		CW	INTAKE STRUCTURE 1-1 DESILT AND INSPECT	8	01NOV08 00:00	01NOV08 07:59	90
R211381109	K	6	10	OMVM		CW	INTAKE STRUCTURE SUPPORT FOR VACUUM TRUCK	40	01NOV08 00:00	02NOV08 15:59	90
R211381104	K	6	10	OMVM		CW	INTAKE STRUCTURE 1-3 DESILT AND INSPECT	8	02NOV08 16:00	02NOV08 23:59	90
R211381105	K	6	10	OMVM		CW	INTAKE STRUCTURE 1-2 DESILT AND INSPECT	8	03NOV08 00:00	03NOV08 07:59	90
R211381103	K	6	10	OMVM		CW	INTAKE STRUCTURE INSPECT WEST OF GRATES	24	03NOV08 08:00	04NOV08 07:59	90
R211381110	K	6	14	OEPB		CW	INTAKE STRUCTURE ENGINEER TO EVALUATE RESULTS	8	04NOV08 08:00	04NOV08 15:59	127
R211381112	K	6	14	OPCE		CW	INTAKE STRUCTURE SAMPLE DUMPSTER	8	04NOV08 19:00	05NOV08 02:59	127



Data Date 26JUN08 08:00  
Run Date 26JUN08 15:58

LFV Opening Layout  
License Renewal Activities

Oyster Creek  
1R22

Sheet 12 of 16

Date	Revision	Checked	Approved





Activity ID	DISP	SPL	MILE	SUPV	P4	SWIN	Activity Description	Orig Dur	Early Start	Early Finish	Total Float	2008																													
												OCT NOV																													
												17	18	19	20	21	22	23	24	25	26	27	28	29	30	31	1	2	3	4	5	6	7	8	9	10	11	12	13	14	15
<b>2121463</b>																																									
R212146301	K	6	14	OMM3		CW	FI-333-9 REPLACE FI-333-9	1	29OCT08 08:00	29OCT08 08:59	282	FI-333-9 REPLACE FI-333-9																													
R212146303	K	6	14	OMM3		CW	FI-333-9 PMT D	1	03NOV08 01:00	03NOV08 01:59	176	FI-333-9 PMT D																													
R212146302	K	6	14	OMM3		CW	FI-333-9 PERFORM VISUAL INTERNAL INSP	1	03NOV08 04:00	03NOV08 04:59	176	FI-333-9 PERFORM VISUAL INTERNAL INSP																													
R212146304	K	6	14	NDE4		CW	FI-333-9 PERFORM VT-3 INSP	1	03NOV08 05:00	03NOV08 05:59	176	FI-333-9 PERFORM VT-3 INSP																													
<b>2121465</b>																																									
R212146501	K	6	14	OMM3		CW	FI-333-11 REPLACE FI-333-11	1	31OCT08 12:00	31OCT08 12:59	229	FI-333-11 REPLACE FI-333-11																													
R212146503	K	6	14	OMM3		CW	FI-333-11 PMT	1	02NOV08 22:00	02NOV08 22:59	177	FI-333-11 PMT																													
R212146502	K	6	14	OMM3		CW	FI-333-11 PERFORM VISUAL INTERNAL INSP	1	03NOV08 04:00	03NOV08 04:59	172	FI-333-11 PERFORM VISUAL INTERNAL INSP																													
R212146504	K	6	14	NDE4		CW	FI-333-11 NDE PERFORM VT-3 INSP	5	03NOV08 05:00	03NOV08 09:59	172	FI-333-11 NDE PERFORM VT-3 INSP																													
<b>2121480</b>																																									
R212148006	K	6	14	OMM3		CW	LI-52 PERFORM VISUAL INTERNAL INSP	1	27OCT08 18:00	27OCT08 18:59	318	LI-52 PERFORM VISUAL INTERNAL INSP																													
R212148009	K	6	14	NDE4		CW	LI-52 NDE PERFORM VT-3 INSP	5	27OCT08 19:00	27OCT08 23:59	318	LI-52 NDE PERFORM VT-3 INSP																													
R212148001	K	6	10	OMM3		CD	LI-3 REPLACE LI-3	1	29OCT08 10:00	29OCT08 10:59	237	LI-3 REPLACE LI-3																													
R212148007	K	6	ZZ	OMM3		CW	LI-56 PERFORM VISUAL INTERNAL INSP	1	31OCT08 10:00	31OCT08 10:59	1,471	LI-56 PERFORM VISUAL INTERNAL INSP																													
R212148010	K	6	ZZ	NDE4		CW	LI-56 NDE PERFORM VT-3 INSP	5	31OCT08 11:00	31OCT08 15:59	1,471	LI-56 NDE PERFORM VT-3 INSP																													
R212148004	K	6	12	OMM3		CD	LI-3/LI-52/LI-56 LEAK TEST	1	07NOV08 03:00	07NOV08 03:59	60	LI-3/LI-52/LI-56 LEAK TEST																													
R212148008	K	6	15	NDE4		CD	LI-3 NDE PERFORM VT-3 INSP	5	07NOV08 06:00	07NOV08 10:59	655	LI-3 NDE PERFORM VT-3 INSP																													
R212148005	K	6	15	OMM3		CD	LI-3 PERFORM VISUAL INTERNAL INSP	1	07NOV08 11:00	07NOV08 11:59	1,307	LI-3 PERFORM VISUAL INTERNAL INSP																													
<b>2121587</b>																																									
R212158701	K	6	10	OMM3		CW	V-3-125 REMOVE/REPLACE VALVE	1	25OCT08 21:00	25OCT08 21:59	190	V-3-125 REMOVE/REPLACE VALVE																													
R212158702	K	6	10	OEPP		CW	V-3-125 INSPECT VALVE INTERNALS	1	25OCT08 22:00	25OCT08 22:59	194	V-3-125 INSPECT VALVE INTERNALS																													
R212158703	K	6	14	OMM3		CW	V-3-125 PMT	1	02NOV08 20:00	02NOV08 20:59	184	V-3-125 PMT																													
R212158704	K	6	14	NDE4		CW	V-3-125 VT-3 INSPECTION	1	04NOV08 09:00	04NOV08 09:59	148	V-3-125 VT-3 INSPECTION																													
<b>2121590</b>																																									
R212159005	P	5	P	OMVS		SW	V-3-58 C8-1365 ERECT RIGGING SCAFFOLD	6	29SEP08 08:00	29SEP08 13:59	194	V-3-58 C8-1365 ERECT RIGGING SCAFFOLD																													
R212159001	K	5	10	OMM3	Y10	SW	V-3-58 REPLACE V-3-58	8	02NOV08 09:00	02NOV08 16:59	5	V-3-58 REPLACE V-3-58																													
R212159002	K	5	16	OEPP		SW	V-3-58 INSPECT VALVE INTERNALS	8	03NOV08 19:00	04NOV08 02:59	269	V-3-58 INSPECT VALVE INTERNALS																													
R212159006	P	5	P	OMVS		CW	V-3-58 C8-1365 REMOVE RIGGING SCAFFOLD	4	04NOV08 08:00	04NOV08 11:59	332	V-3-58 C8-1365 REMOVE RIGGING SCAFFOLD																													
R212159003	K	5	14	OMM3		SW	V-3-58 PMT	8	07NOV08 19:00	08NOV08 02:59	59	V-3-58 PMT																													
R212159004	K	5	16	NDE4		SW	V-3-58 VT-3 INSPECTION	8	07NOV08 19:00	08NOV08 02:59	181	V-3-58 VT-3 INSPECTION																													

Data Date 26JUN08 08:00  
Run Date 26JUN08 15:58

LFV Opening Layout  
License Renewal Activities

Oyster Creek  
1R22

Sheet 15 of 16

© Primavera Systems, Inc.

Date	Revision	Checked	Approved

Activity ID	DISP	SPL	MILE	SUPV	P4	SWIN	Activity Description	Orig Dur	Early Start	Early Finish	Total Float	2008																														
												OCT														NOV																
												17	18	19	20	21	22	23	24	25	26	27	28	29	30	31	1	2	3	4	5	6	7	8	9	10	11	12	13	14	15	
<b>2121592</b>																																										
R212159201	K	6	10	OMM3		CW	V-3-110 REPLACE VALVE	1	25OCT08 21:00	25OCT08 21:59	190	IV-3-110 REPLACE VALVE																														
R212159202	K	6	14	OEPP		CW	V-3-110 INSPECT VALVE INTERNALS	1	02NOV08 20:00	02NOV08 20:59	184	IV-3-110 INSPECT VALVE INTERNALS																														
R212159204	K	6	14	NDE4		CW	V-3-110 VT-3 INSPECTION	1	02NOV08 21:00	02NOV08 21:59	184	IV-3-110 VT-3 INSPECTION																														
<b>2121963</b>																																										
R212196301	K	6	14	OMM3		CW	V-3-13 INSPECT INTERALS	1	27OCT08 15:00	27OCT08 15:59	325	IV-3-13 INSPECT INTERALS																														
R212196302	K	6	14	NDE4		CW	V-3-13 VT-3 INSPECTION	1	27OCT08 16:00	27OCT08 16:59	325	IV-3-13 VT-3 INSPECTION																														
<b>2122300</b>																																										
R212230001	K	4	13	OEDM		PC	TORUS INSPECT TORUS	1	27OCT08 17:00	27OCT08 17:59	315	ITORUS INSPECT TORUS																														
<b>2122551</b>																																										
R212255101	K	6	14	OMM3		CW	S-3-24 REMOVE STRAINER FOR INSPECTION	1	31OCT08 14:00	31OCT08 14:59	231	IS-3-24 REMOVE STRAINER FOR INSPECTION																														
R212255102	K	6	14	OMM3		CW	S-3-24 INSPECT ONE COPPER ALLOY STRNR	1	02NOV08 22:00	02NOV08 22:59	183	IS-3-24 INSPECT ONE COPPER ALLOY STRNR																														
R212255103	K	6	14	OMM3		CW	S-3-24 PMT	1	02NOV08 22:00	02NOV08 22:59	177	IS-3-24 PMT																														
<b>2122565</b>																																										
R212256501	K	6	10	OMM3		CW	TE-26 INSP WATER SIDE OF 4 CIRC WTR THERMOWELLS	1	25OCT08 22:00	25OCT08 22:59	193	ITE-26 INSP WATER SIDE OF 4 CIRC WTR THERMOWELLS																														
R212256502	K	6	10	OMM3		CW	TE-26 SPECIAL PERMIT ACTIVITY	1	25OCT08 22:00	25OCT08 22:59	195	ITE-26 SPECIAL PERMIT ACTIVITY																														
<b>2122575</b>																																										
R212257501	K	6	10	OMM3		CW	V-3-1041 PERFORM INTERNAL INSPECTION (LRA)	1	29OCT08 07:00	29OCT08 07:59	108	IV-3-1041 PERFORM INTERNAL INSPECTION (LRA)																														
<b>2122597</b>																																										
R212259701	R	3		OMM2		MI	775 PERFORM CABLE INSP IN THE COND BAY LRA	4	26JUN08 09:00	26JUN08 12:59	4,521																															
R212259702	R	3		OMM2		MI	775 CABLE INSP IN TRUNION ROOM LRA	2	26JUN08 09:00	26JUN08 10:59	4,523																															
R212259703	R	3		OMM2		MI	775 CABLE INSP IN DRYWELL LRA	8	26JUN08 09:00	26JUN08 16:59	4,517																															

Data Date 26JUN08 08:00  
Run Date 26JUN08 15:58

LFV Opening Layout  
License Renewal Activities

Oyster Creek  
1R22

Sheet 16 of 16

© Primavera Systems, Inc.

Date	Revision	Checked	Approved