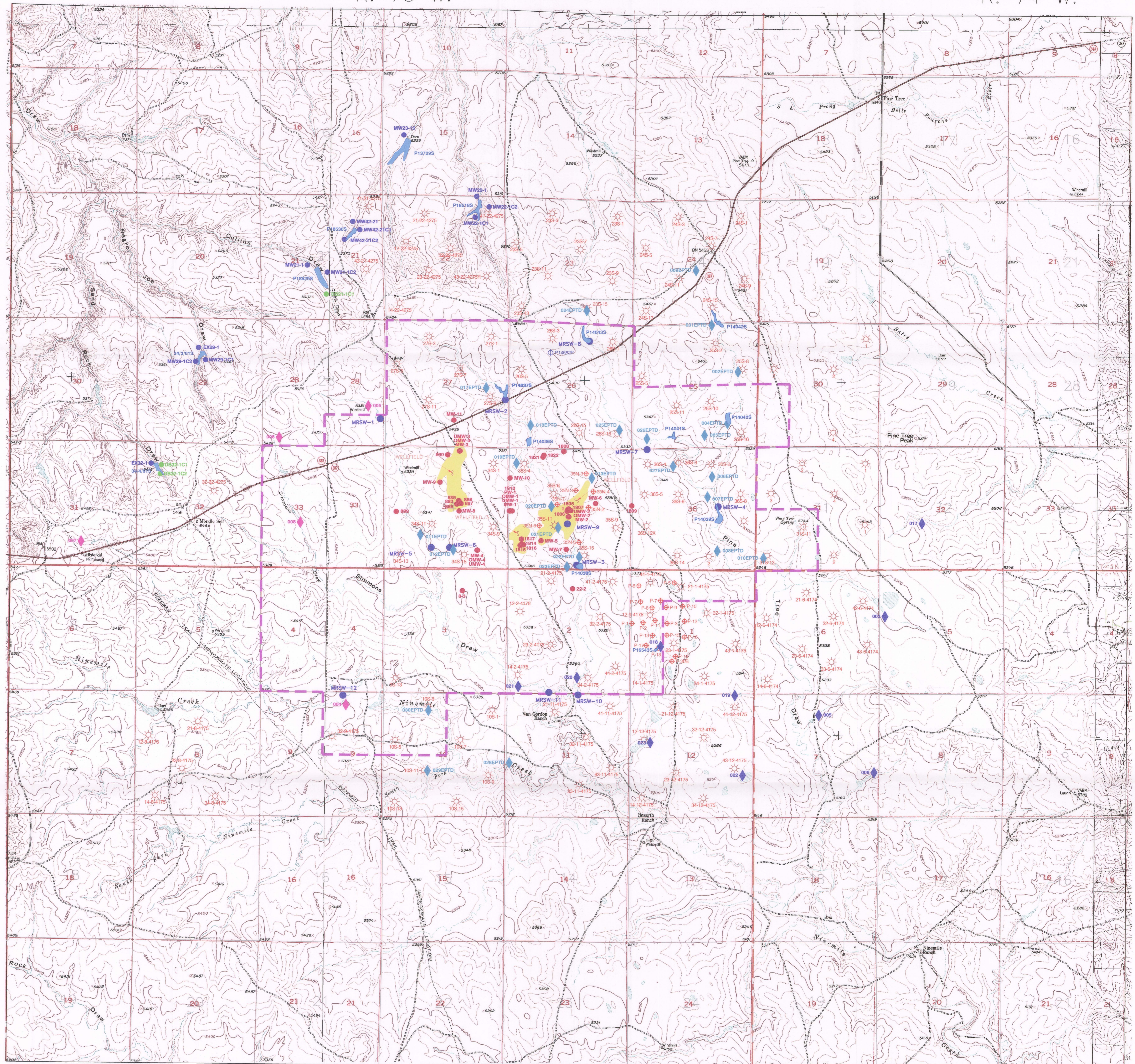


R. 75 W.

R. 74 W.

T. 42 N.

T. 41 N.



**LEGEND**

- MOORE RANCH PERMIT BOUNDARY
- P140405 EXISTING PERMITTED RESERVOIR FOOTPRINT WITH WSEO PERMIT NUMBER
- MRSW-12 SURFACE WATER SAMPLING SITES
- ◆ 004EPTD EXISTING WATER DISCHARGE OUTFALL-DEVON (WY0040436)
- ◆ 003 EXISTING WATER DISCHARGE OUTFALL-BBC (WY0051217)
- ◆ 004 EXISTING WATER DISCHARGE OUTFALL-BBC (WY0055131)
- MW-1 MONITOR WELL LOCATION
- MW21-1 MONITOR WELL LOCATION - BBC
- DB21-1C1 DRY BOREHOLE LOCATION - BBC
- ⊙ 105-11 CBNG - PRODUCING
- ⊙ 32-6 BH1 CONOCO SAND ROCK SHALLOW PIEZOMETER
- ⊙ P14082P STOCK/DOMESTIC WATER WELLS WITH PERMIT NUMBER

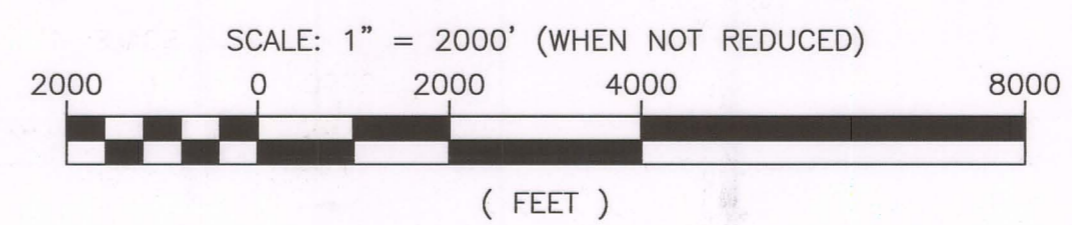


FIGURE 2.7.1-2

**ENERGY METALS CORPORATION, US**  
 139 West 2nd St. Casper, WY 82601 307-234-0235

REVISIONS			MOORE RANCH URANIUM PROJECT COAL BED METHANE WELLS & OUTFALL LOCATIONS		
NO.	DATE	BY	NO.	DATE	BY
1	08/06/07	JT			
2	03/07/08	JT			

PORTIONS OF T. 41 & 42 N., R. 74 & 75 W.

D16