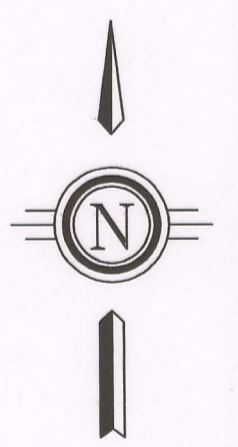
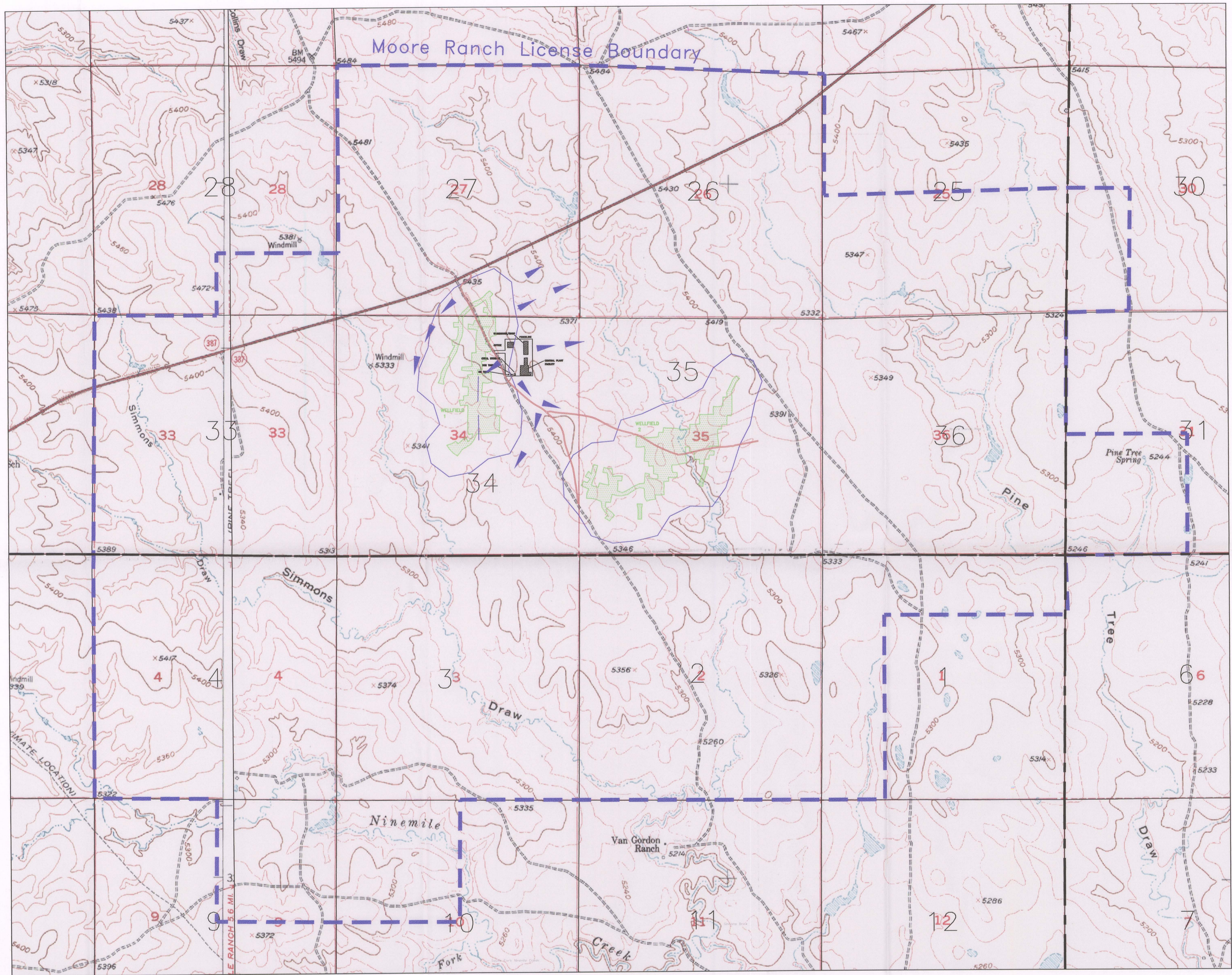



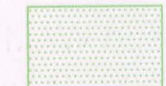

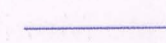
R. 75 W.

R. 74 W.

T. 42 N.
T. 41 N.



LEGEND

-  Proposed Moore Ranch License Boundary
-  Proposed Wellfield Areas/
Affected Lands
-  Site Drainage
-  Proposed Monitor Well Ring

0 5 MILE 10 MILES

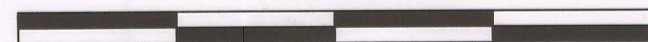


FIGURE 2.1-2

ENERGY METALS CORPORATION, US
 139 West 2nd St. Casper, WY 82601 307-234-8235

REVISIONS		
NO.	DATE	BY
1	07/13/07	JT
2	10/27/08	JT

**MOORE RANCH
 URANIUM PROJECT
 PROJECT SITE LAYOUT**

PORTIONS OF T. 41 & 42 N., R. 74 & 75 W.

GEOLOG. BY: _____	DATE: _____	APPR. BY: _____	DATE: _____	SHEET NO. _____
ENG. BY: _____	DATE: _____	APPR. BY: _____	DATE: _____	
DRAFT. BY: _____	DATE: _____	SCALE: _____	FILE: _____	

DOI