

Generic Issues Program Overview and Update

16th International Conference on Nuclear
Engineering (ICONE-16)

Presented by Jack W. Foster

Orlando, Florida USA May 11-15, 2008

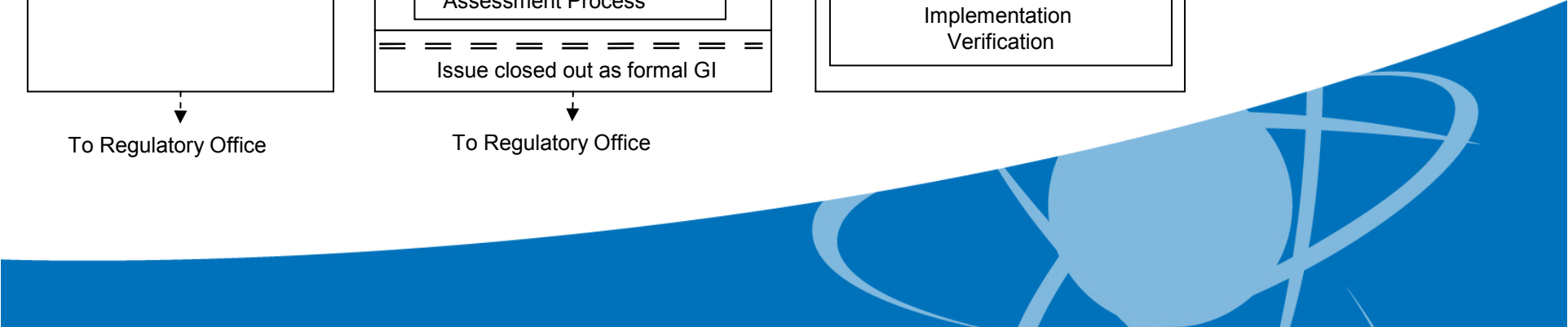
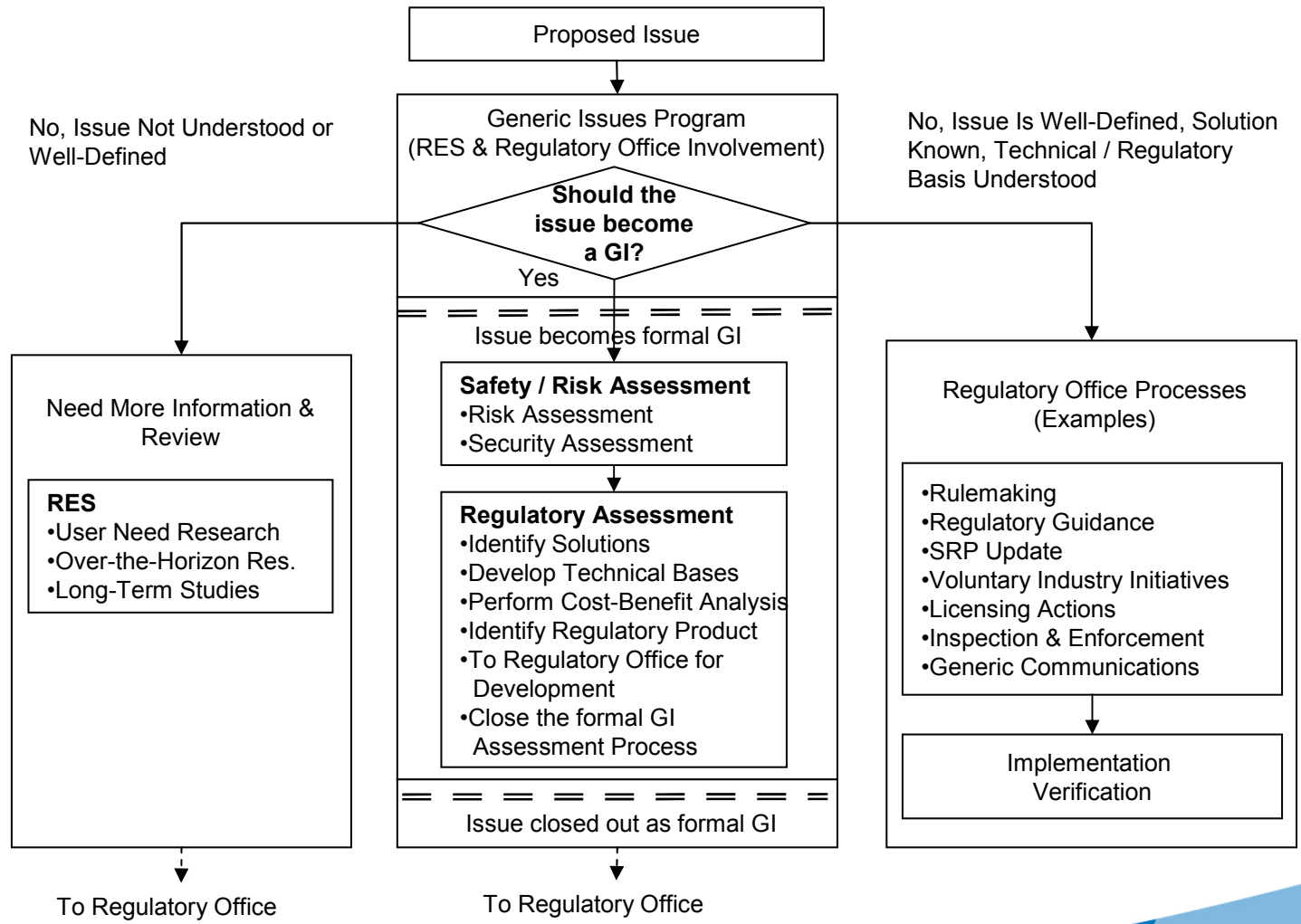
Introduction



- GIP Background
 - Started in 1976. Became Congressionally mandated in 1977 (Public Law 95-209 amended the Energy Reorganization Act of 1974)
 - Evolved over time, now it is a mature program.
- GIP Mission, Purpose, Objectives
- GIP Improvements per SECY-07-0022 (publicly available)
 - improve timeliness
 - clarify roles and responsibilities
 - establish clear interfaces
 - increase stakeholder participation



Generic Issues Program in Perspective with Other Regulatory Programs and Processes

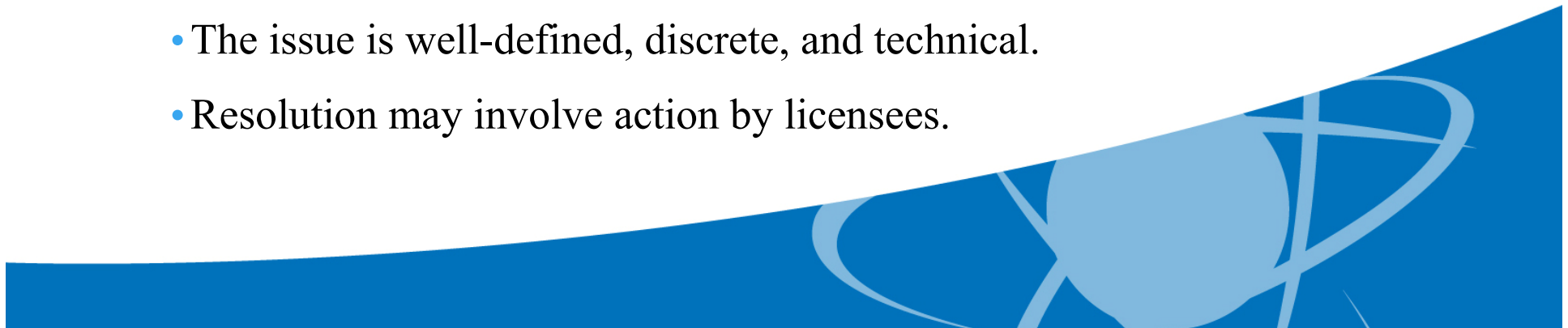


Enhanced GIP Criteria

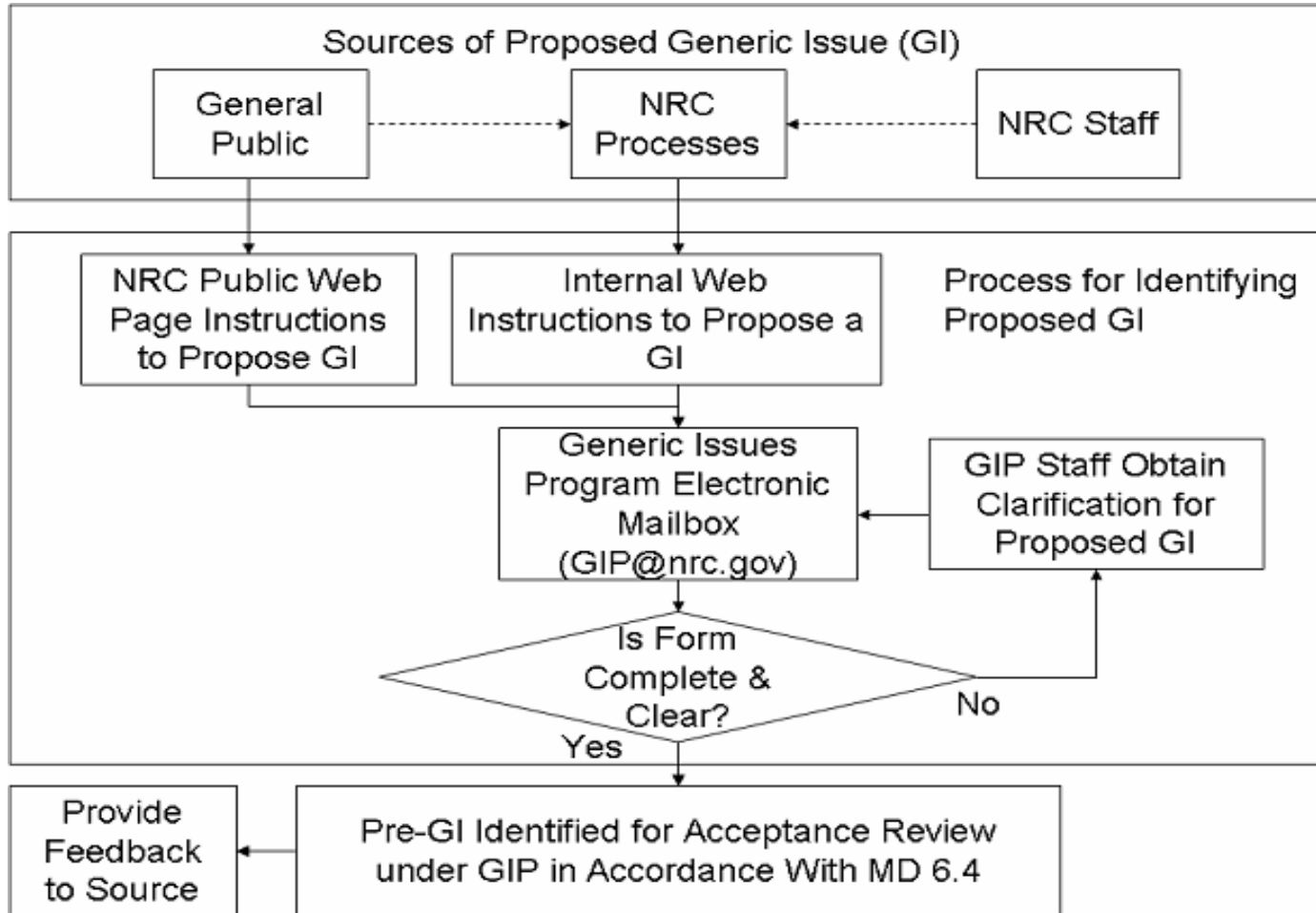


Seven criteria apply during all GIP stages to control entry and help identify when other agency programs are better suited to further address issues.

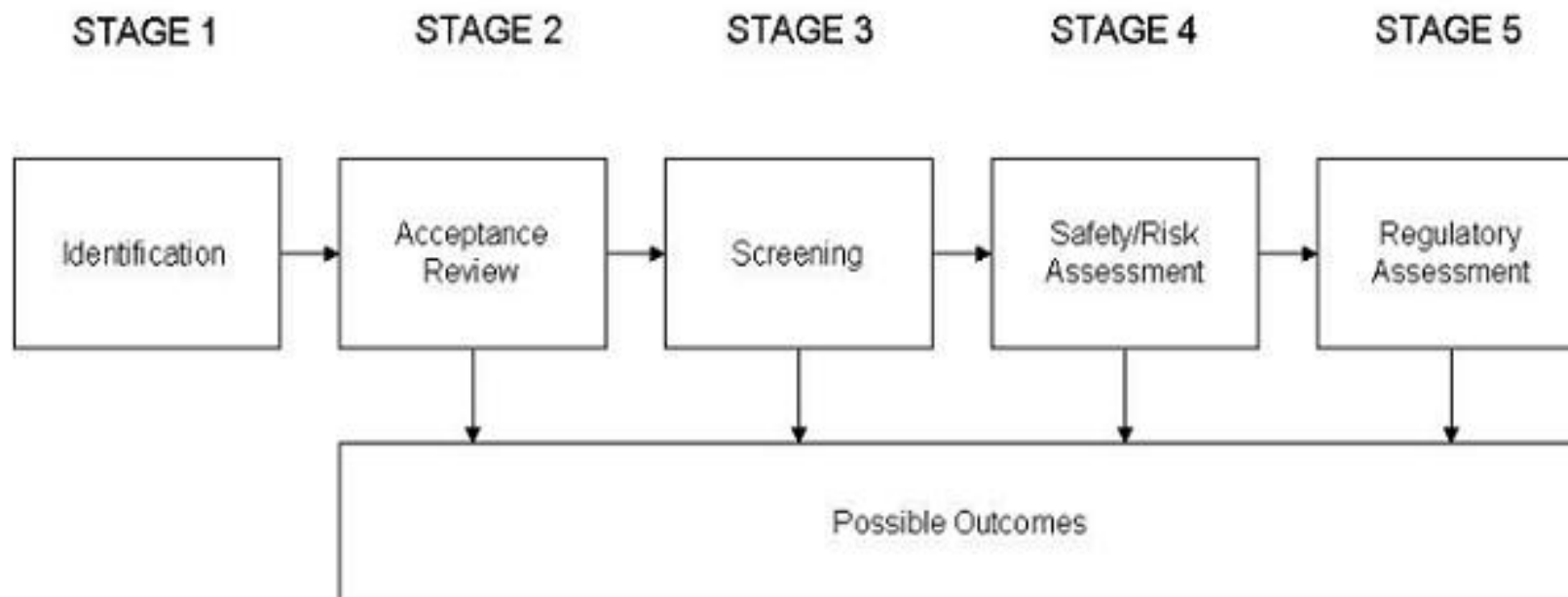
- Affects public health and safety, the common defense and security, or the environment.
- Generic, i.e. affects two or more facilities or licensees.
- Not readily addressed by other regulatory programs and processes, or existing regulations or industry initiatives.
- Can be resolved by new or revised regulation or policy.
- Risk or safety significance can be adequately determined.
- The issue is well-defined, discrete, and technical.
- Resolution may involve action by licensees.



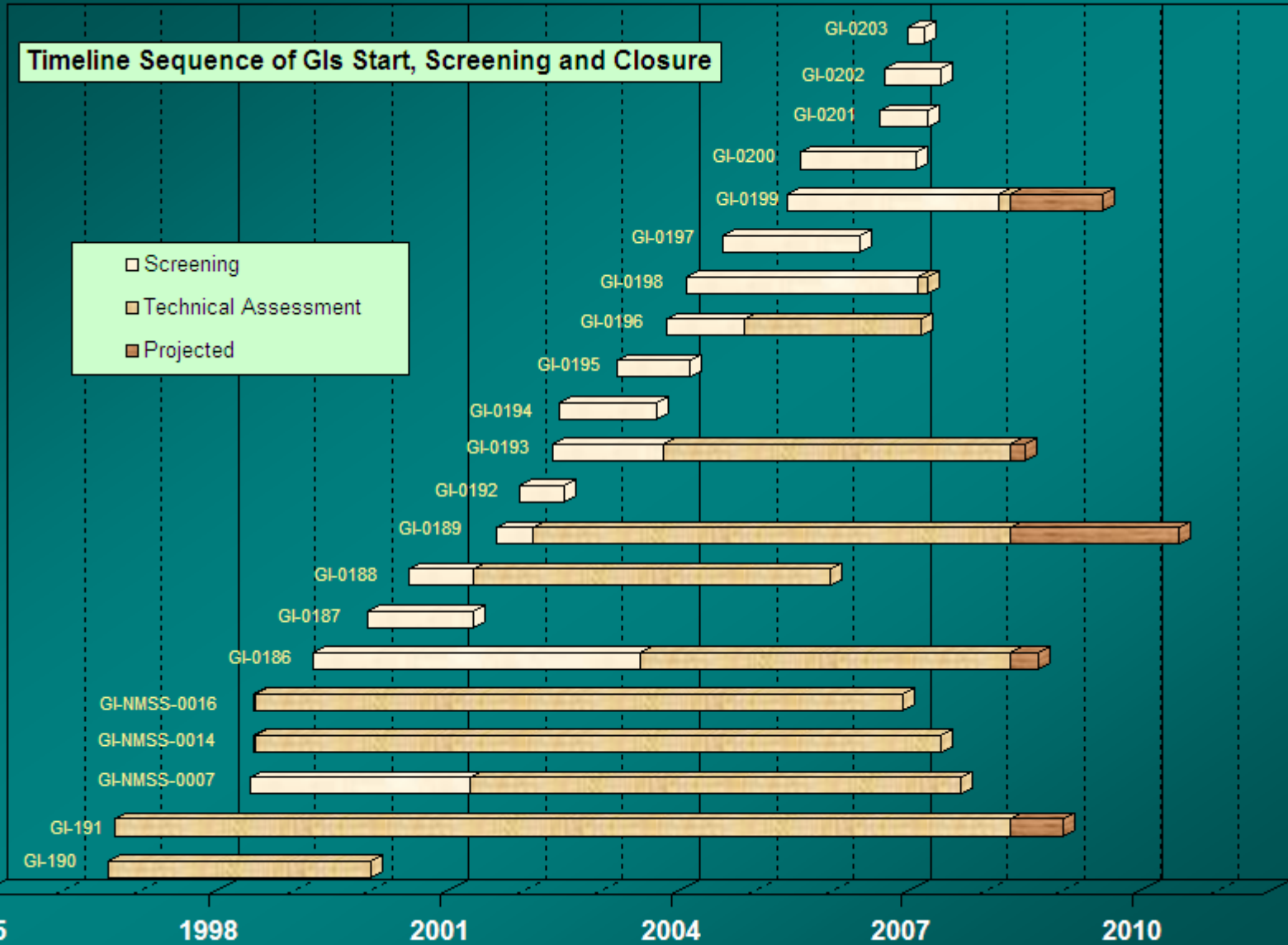
Sources of Proposed Generic Issues and Entry into the GIP



GI PROCESS STAGES

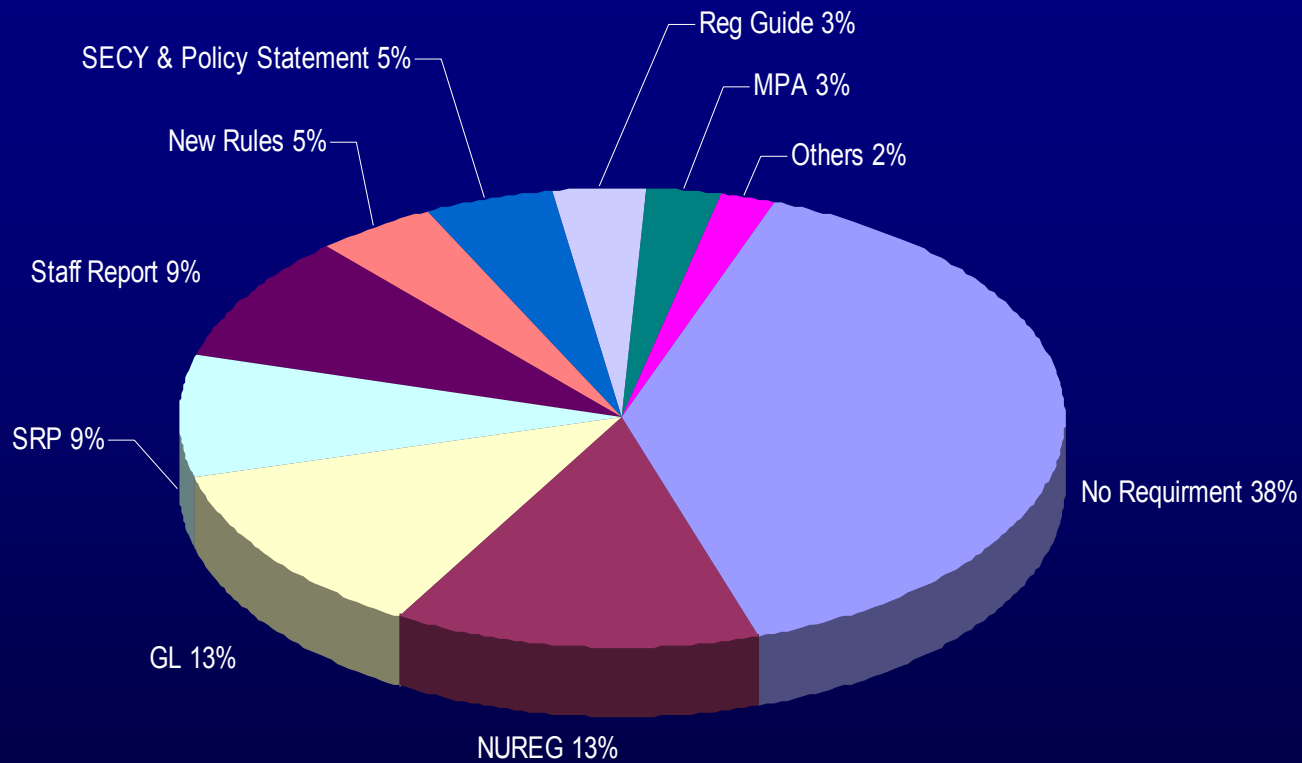


GIP Performance



GIP Performance (continued)

Resolution Products for GIs that Screened In from FY 1983 to Present



Current Status of GIs



- Three Active Reactor GIs in the GIP
 - GI-186, “Potential Risk and Consequences of Heavy Load Drops in Nuclear Power Plants” expected Closure 8/2008
 - GI-193, “BWR ECCS Suction Concerns” expected Closure 9/2008
 - GI-199, “Implications of Updated Probabilistic Seismic Hazard Estimates in Central and Eastern United States for Existing Plants” (Screening completed 2/2008)
- Three Open Reactor GIs with Regulatory Office for Implementation

Recent Activities



- Major changes to GIP procedures will implement the enhancements described in SECY-07-0022
 - MD 6.4 and handbook revision is in progress, currently in approval process
 - RES Office Instruction TEC-002 revision also in progress
- Seven reactor GIs were recently closed.
 - GI-156.6.1, "Pipe Break Effects on Systems and Components"
 - GI-196 "Boral Degradation"
 - GI-198 "Hydrogen Combustion in PWR Piping"
 - GI-200 "Tin Whiskers"
 - GI-201 "Small-Break LOCA and Loss of Offsite Power"
 - GI-202 "Spent Fuel Pool Leakage Impacts"
 - GI-203 "Potential Safety Issues with Cranes That Lift Spent Fuel Casks"

Recent Activities (Cont.)

- Three reactor GIs changed status to Regulatory Office Implementation per SECY-07-0022.
 - GI-163 “Multiple Steam Generator Tube Leakage”
 - GI-189 “Susceptibility of Ice Condenser and Mark III Containments to Early Failure from Hydrogen Combustion During a Severe Accident”
 - GI-191 “Assessment of Debris Accumulation on PWR Sump”
- Three non-reactor GIs were recently closed per SECY-07-0022.
 - GI-NMSS-0007 “Implementation, Criticality Benchmarks Greater Than 5% Enrichment”
 - GI-NMSS-0014, “Surety Estimates for Groundwater Restoration at In-Situ Leach Facilities”
 - GI-NMSS-0016, “Adequacy of 0.05 Weight Percent Limit in 10 CFR 40”