

Figure 2.5S.1-25 Mt. Enterprise - Elkhart Graben

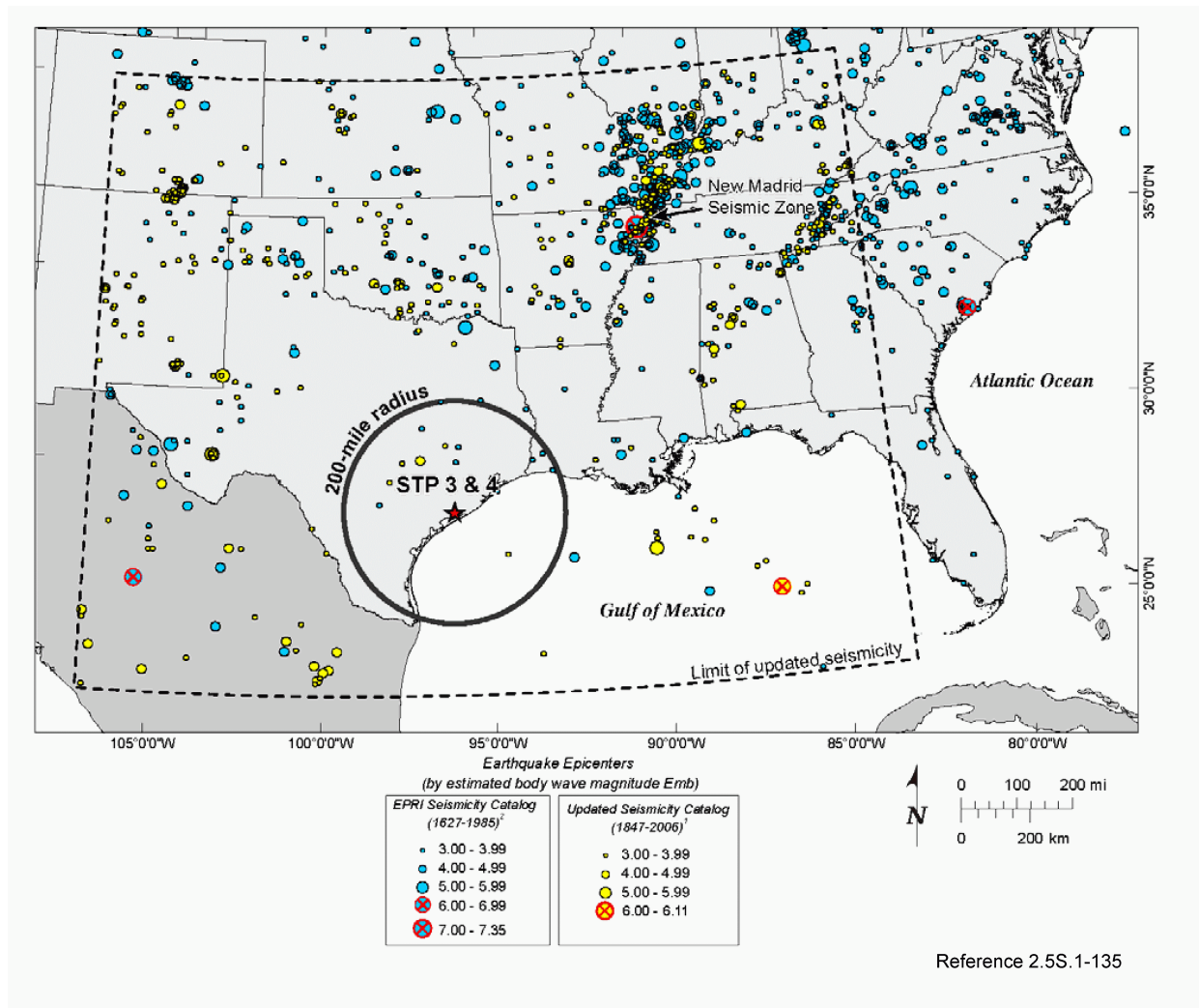
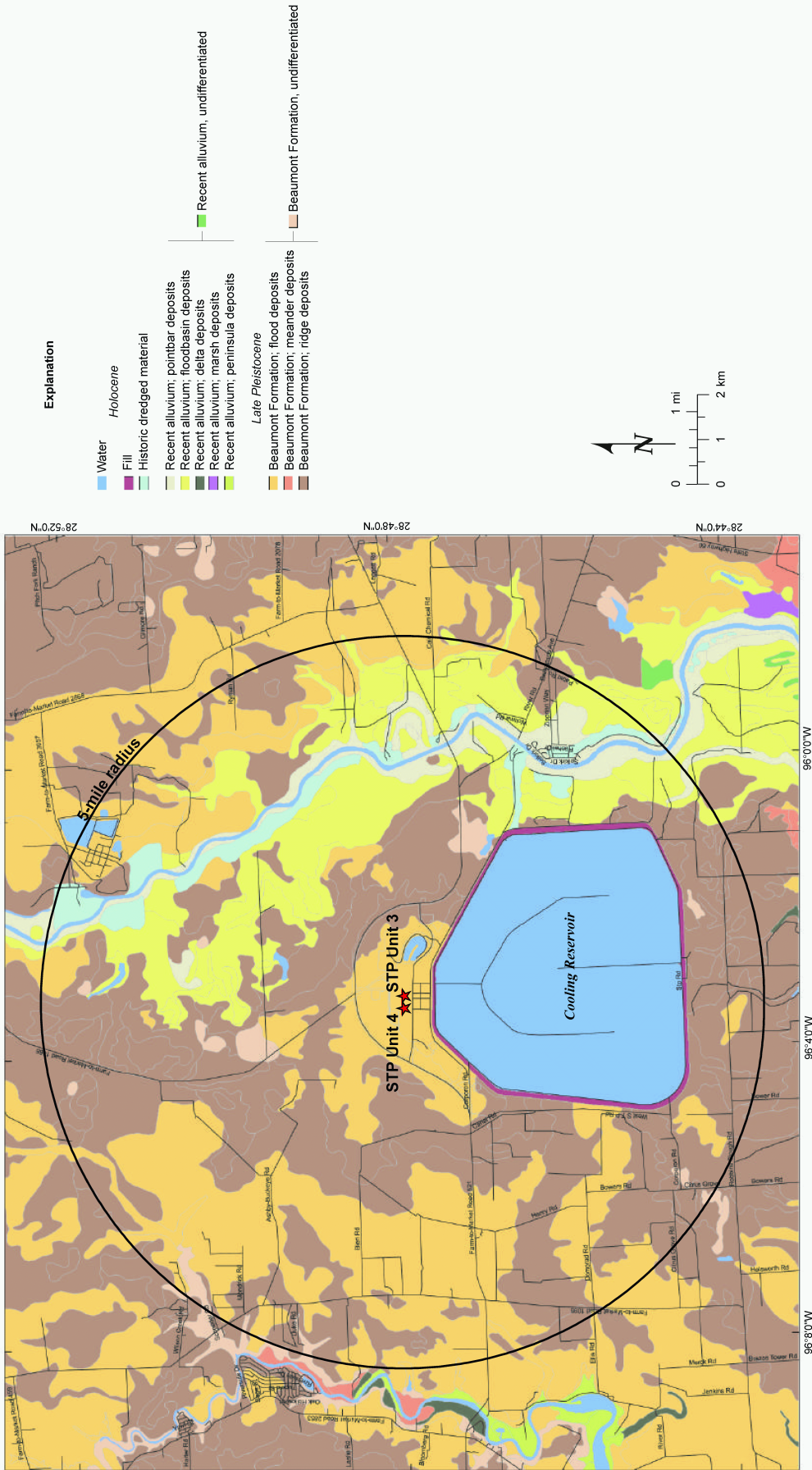


Figure 2.5S.1-26 New Madrid Seismic Zone



Geology based on USDA Soil Survey (Reference 2.SS.1-149) and analysis of aerial photographs.

Figure 2.5S.1-27 Site Area Geological Map (5-mile radius)

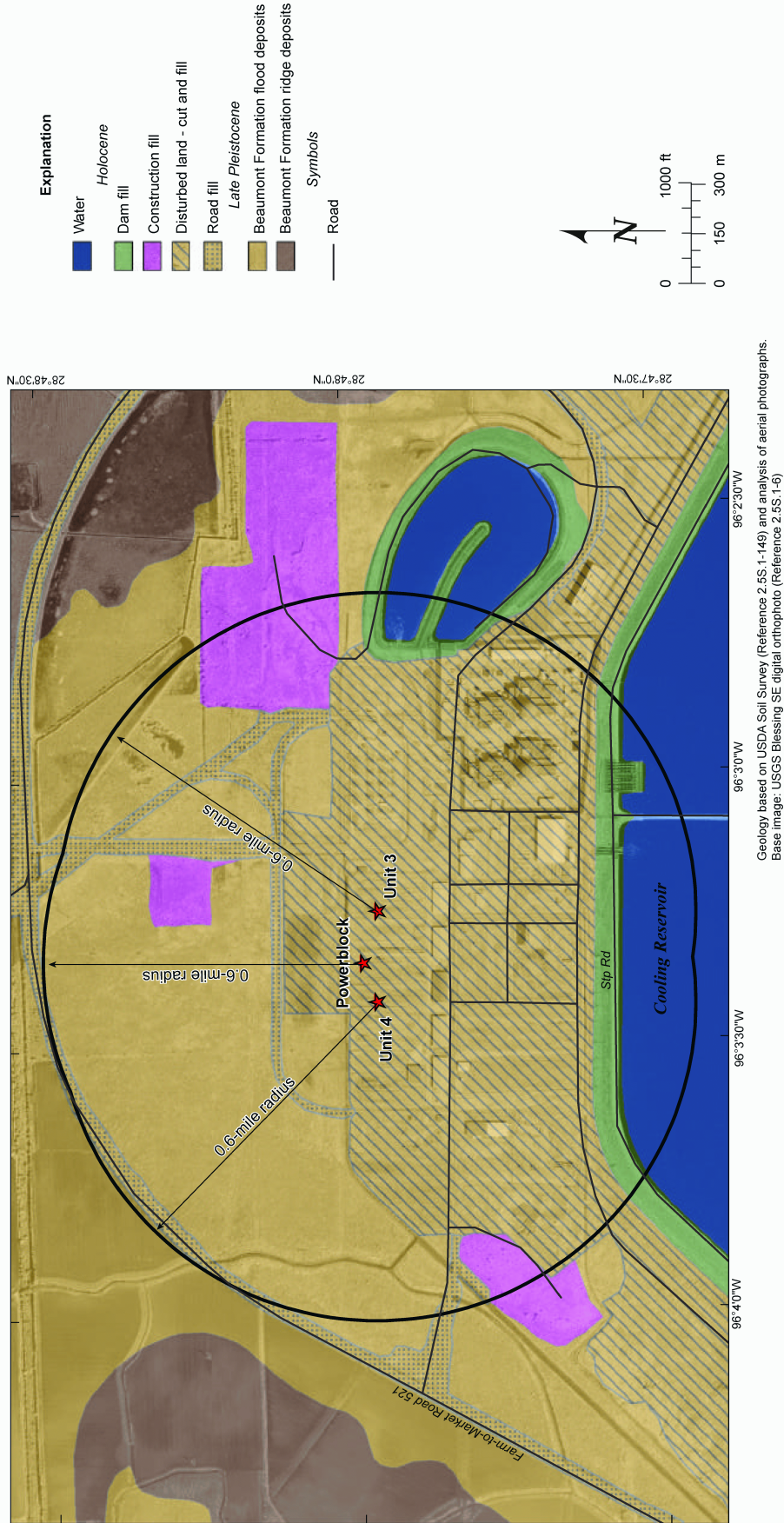


Figure 2.5S.1-28 Site Area Geological Map (0.6-mile radius)

Stratigraphic Unit	Geological/Geotechnical Strata Description	Ground Surface	Approximate Thickness	Hydrogeologic Unit
Beaumont Formation	A - Silty Clay		10-30 ft	Upper Shallow Aquifer Confining Layer
	B - Clayey Silt			
	C - Silty Sand		20-30 ft	Upper Shallow Aquifer
	D - Silty Clay			
	E - Sand		25-50 ft	Lower Shallow Aquifer
	F - Silty Clay			
	H - Silty Sand		100-150 ft	Silty Clay and Silt with discontinuous thin Sand Layers
	J - Silty Clay			
	K - Sandy Silt			
	L - Silty Clay		>500 ft	Deep Aquifer
M - Silty Sand				
N - Silty Clay				
		Chicot Aquifer		

Note: This figure is not to scale.

Figure 2.5S.1-29 STP Site Specific Generalized Stratigraphic Column

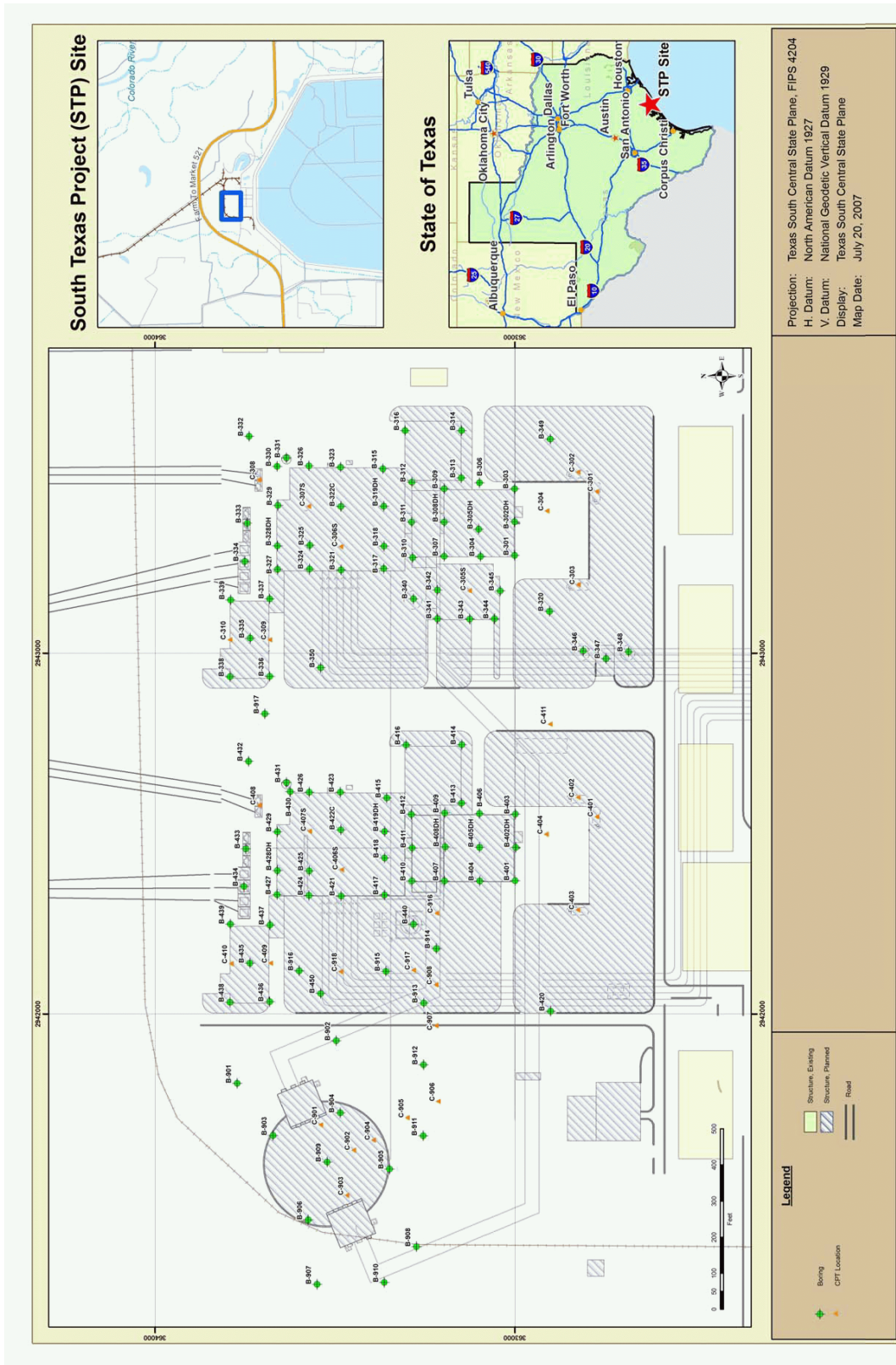


Figure 2.5S.1-30 STP 3 & 4 Boring and CPT Locations

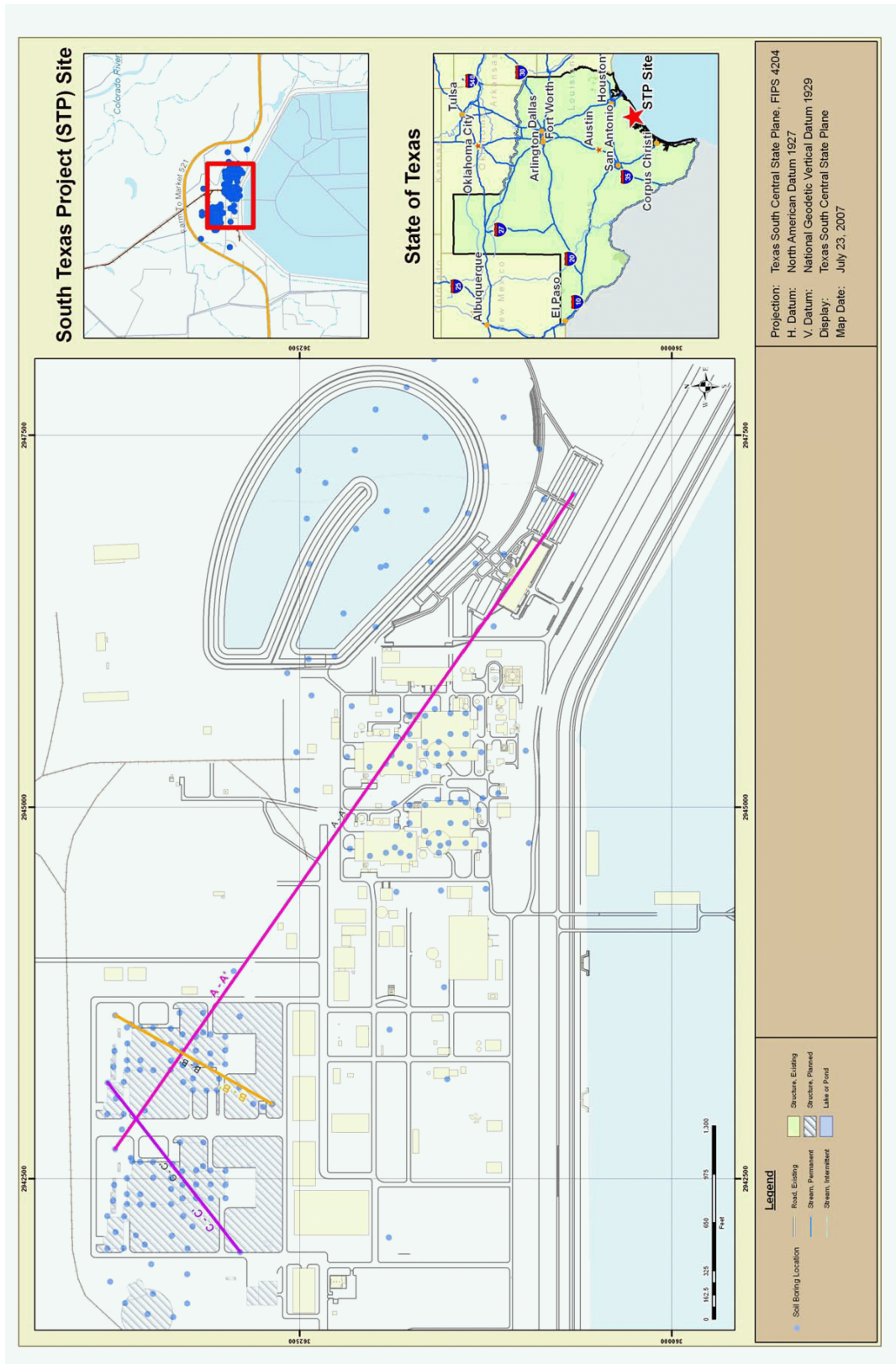


Figure 2.5S.1-31 STP 3 & 4 Cross Section Locations

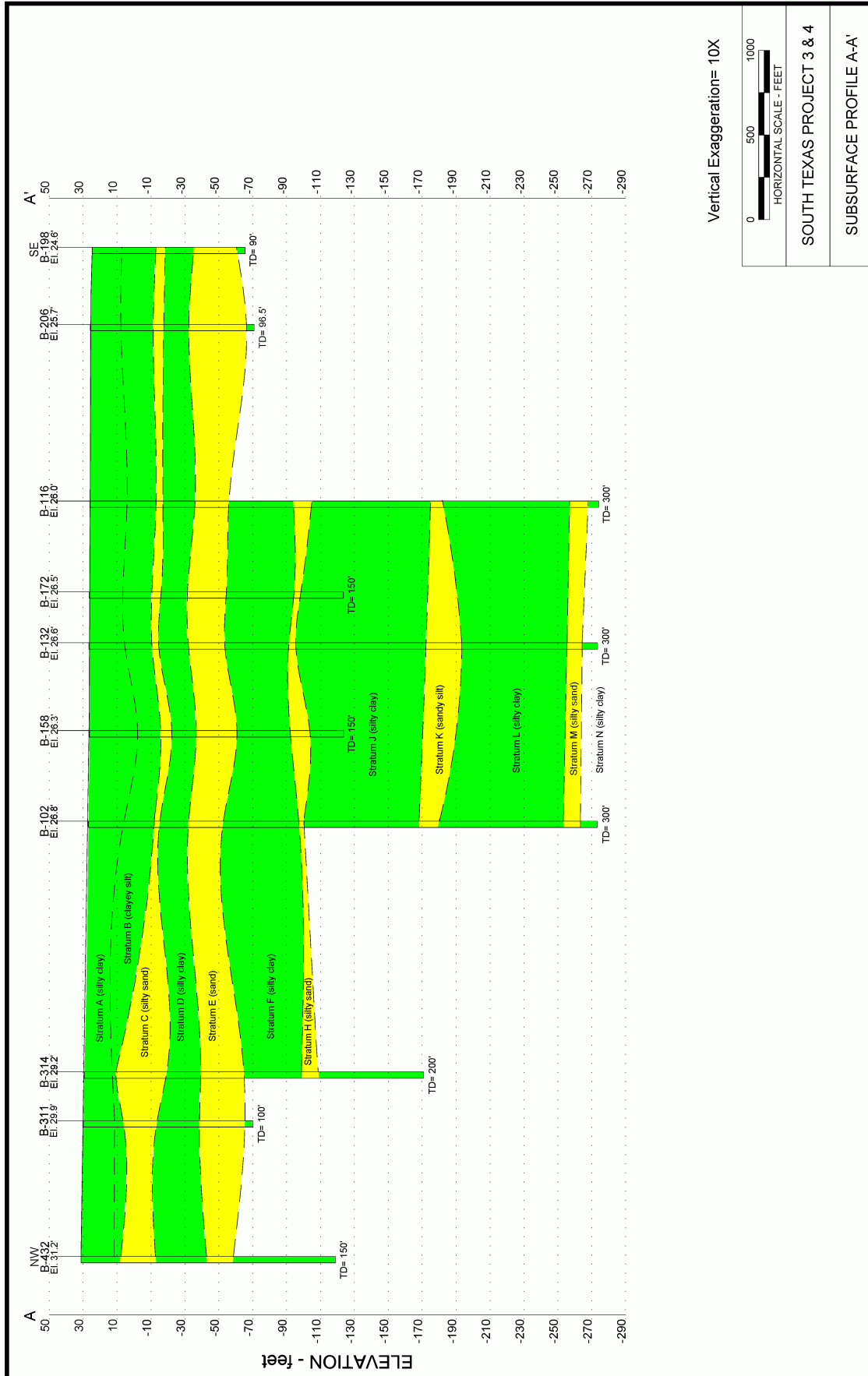


Figure 2.5S.1-32 Subsurface Profile A-A'

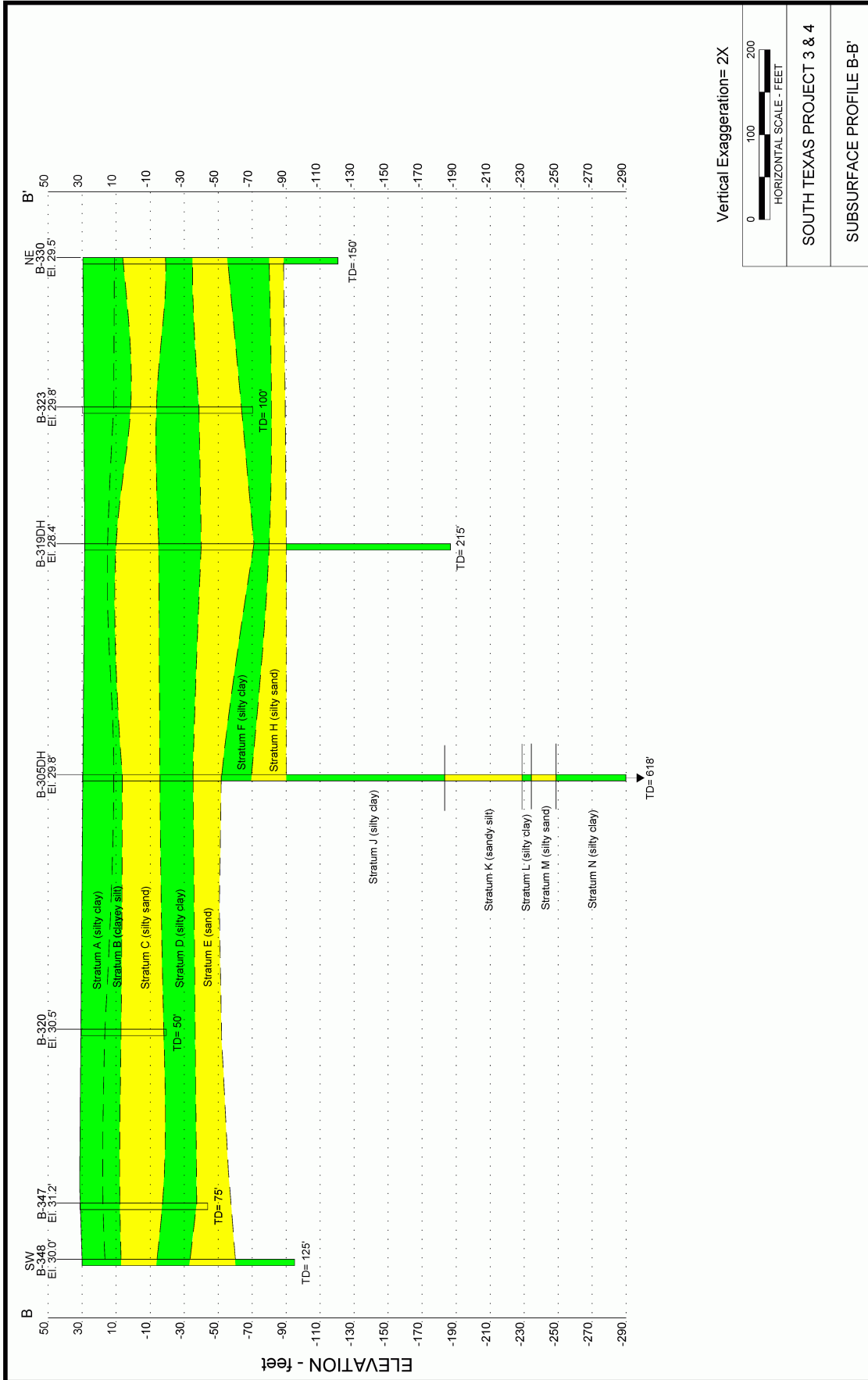


Figure 2.5S.1-33 Subsurface Profile B-B'

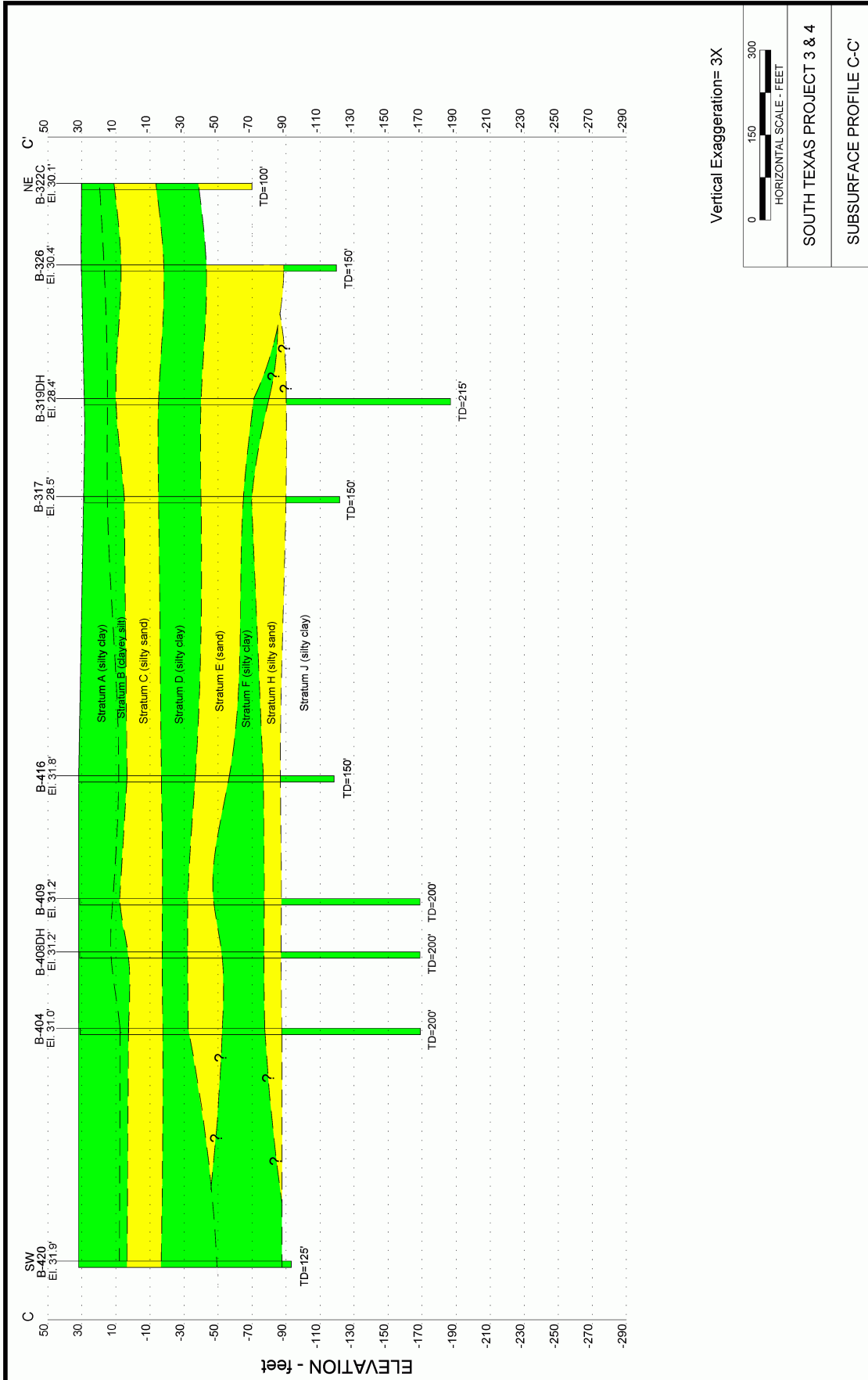


Figure 2.5S.1-34 Subsurface Profile C-C'

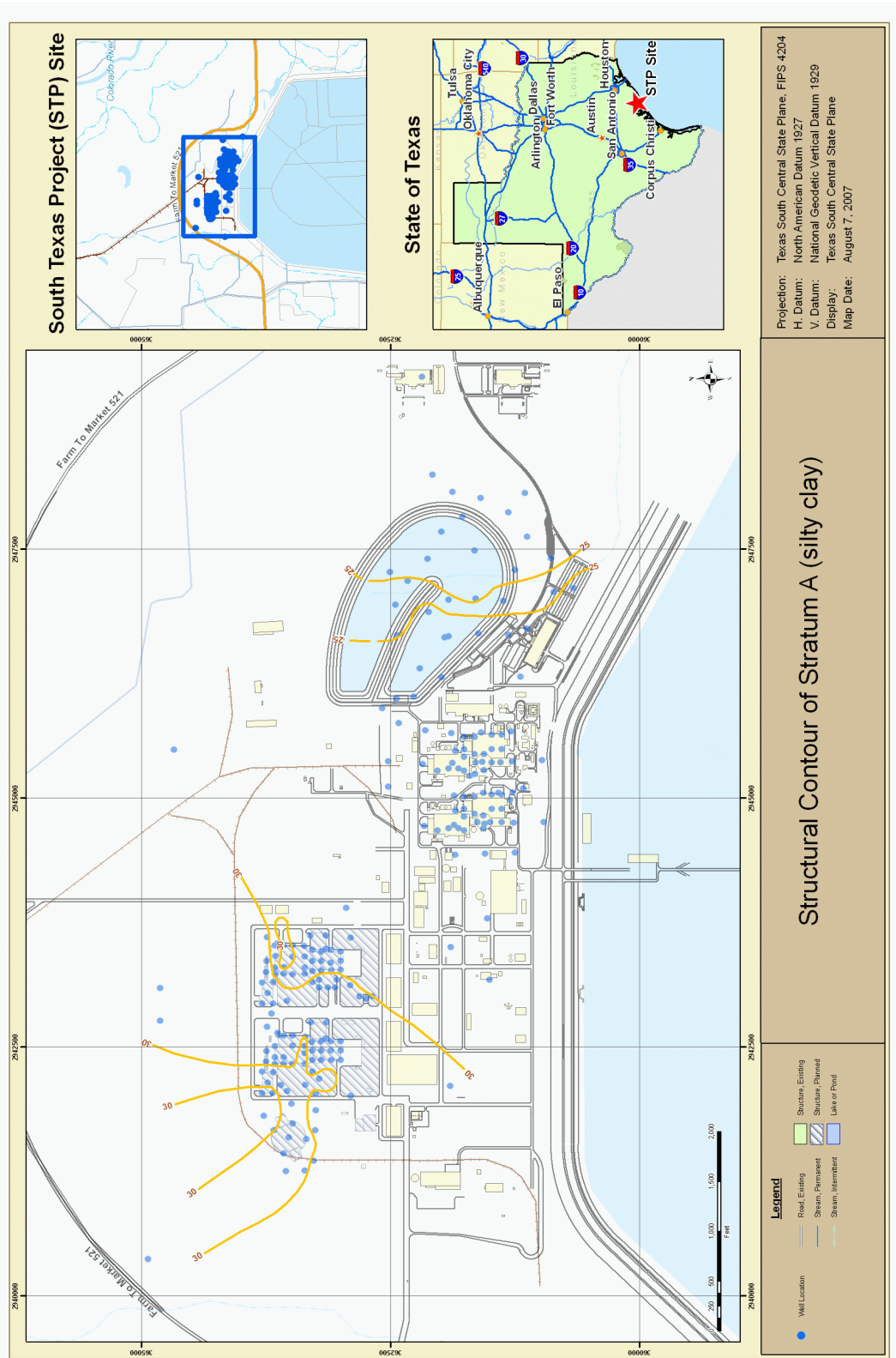


Figure 2.5S.1-35 Structure Contour Map of Stratum A (Silty Clay)

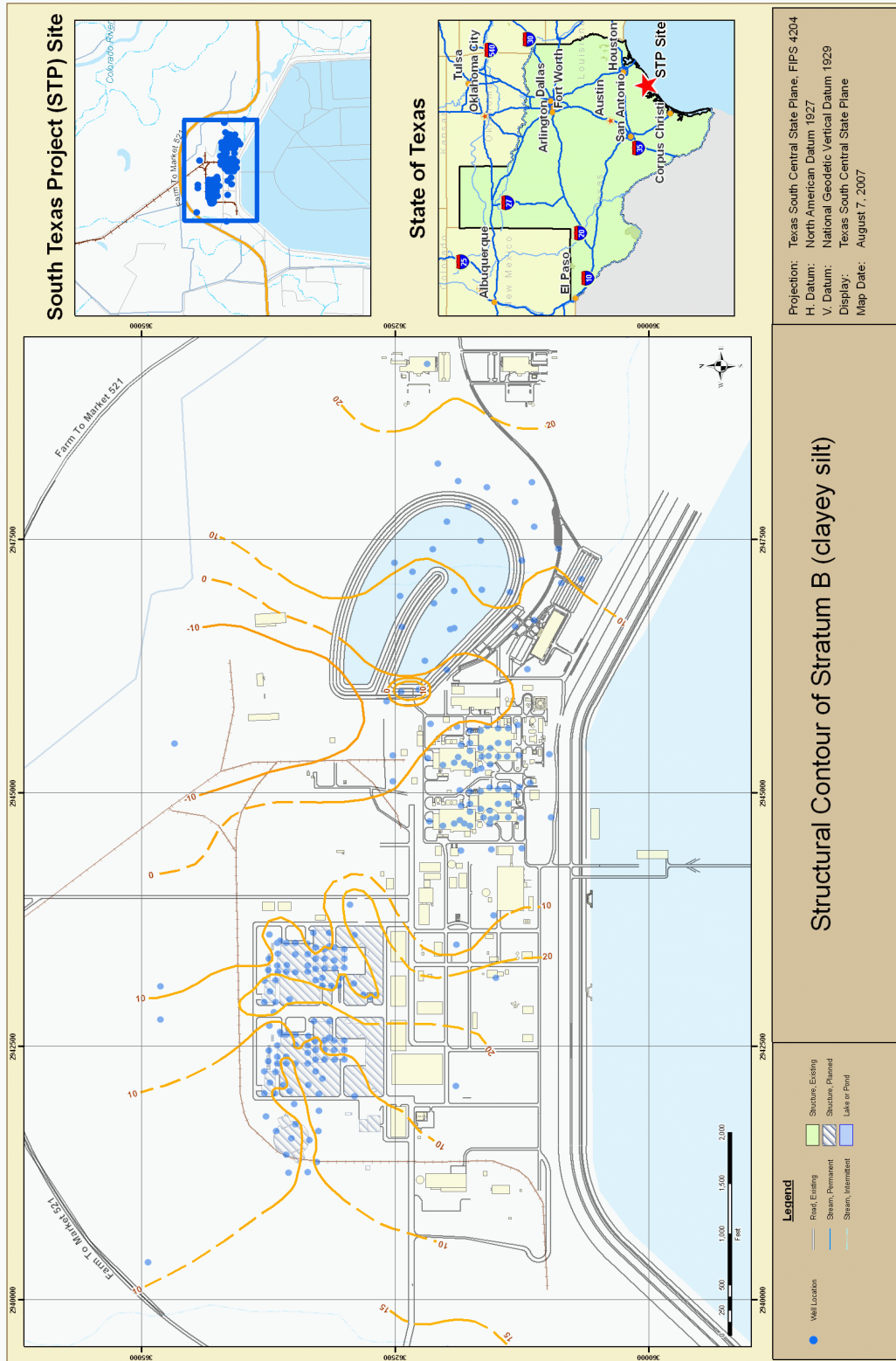


Figure 2.5S.1-36 Structure Contour Map of Stratum B (Clayey Silt)