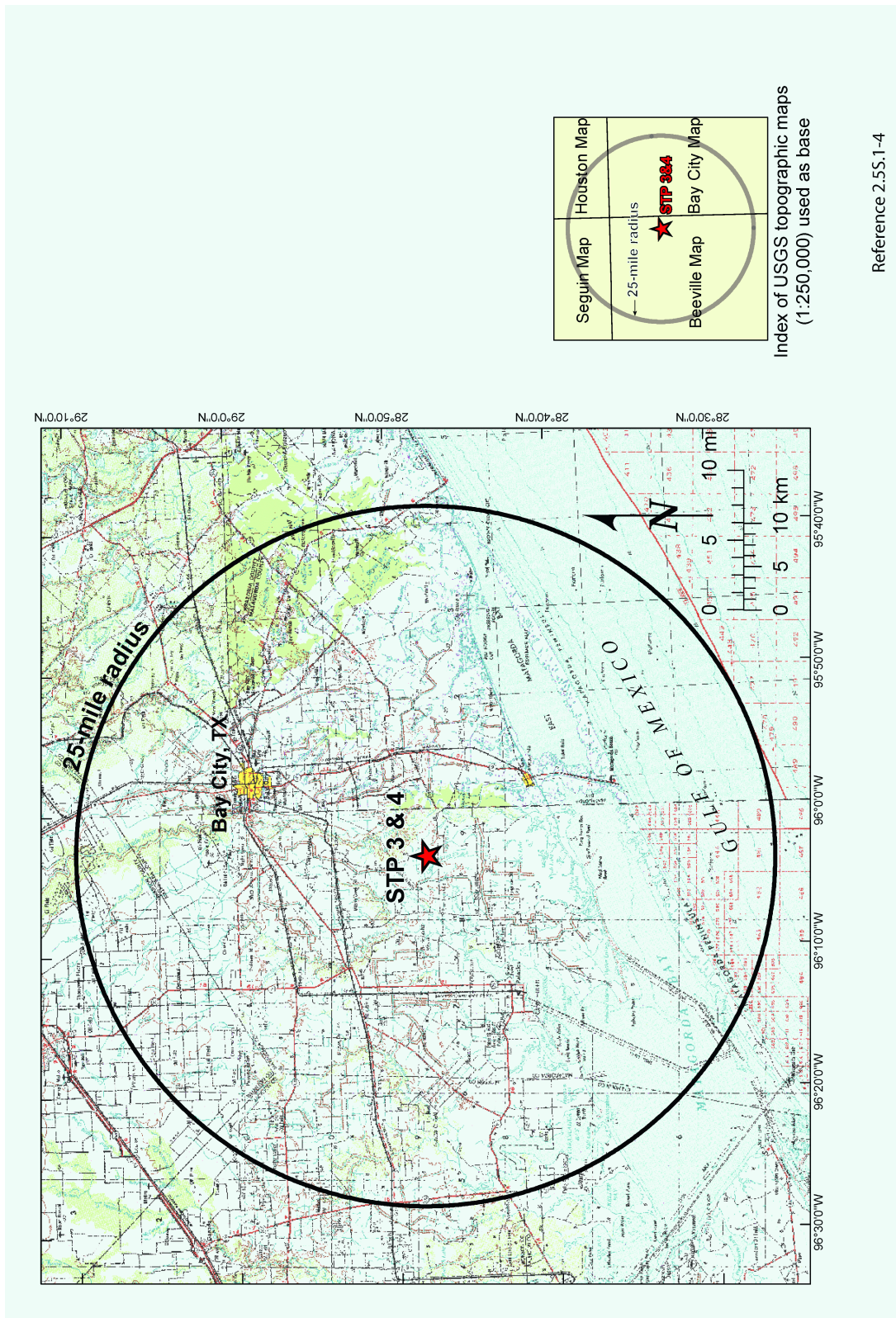


Physiographic provinces modified from References 2.5S.1-2 and 2.5S.1-3

Figure 2.5S.1-1 Map of Physiographic Provinces



Reference 2.5S.1-4

Figure 2.5S.1-2 Site Vicinity Topographic Map (25-mile radius)



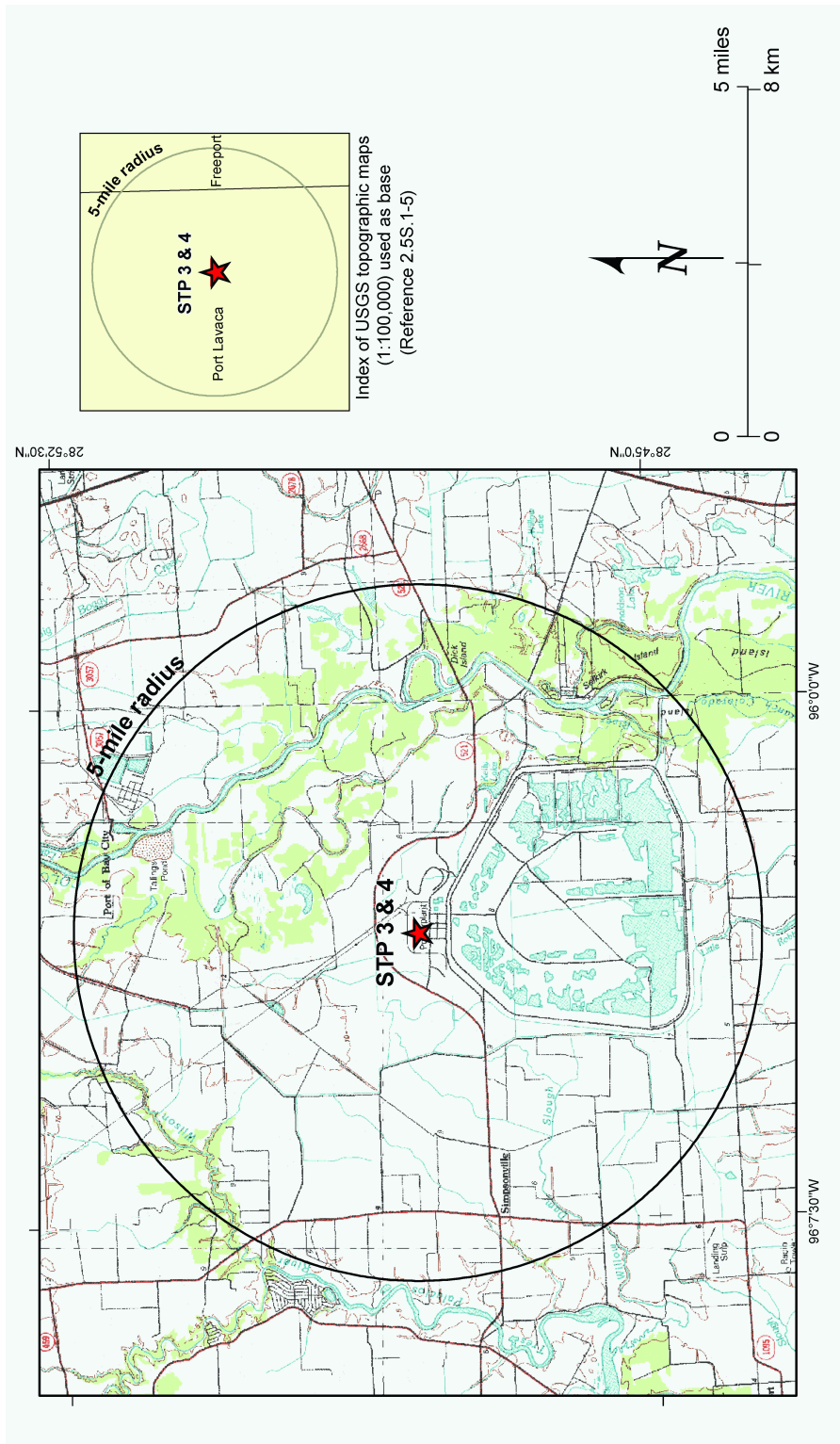


Figure 2.5S.1-3 Site Area Topographic Map (5-mile radius)

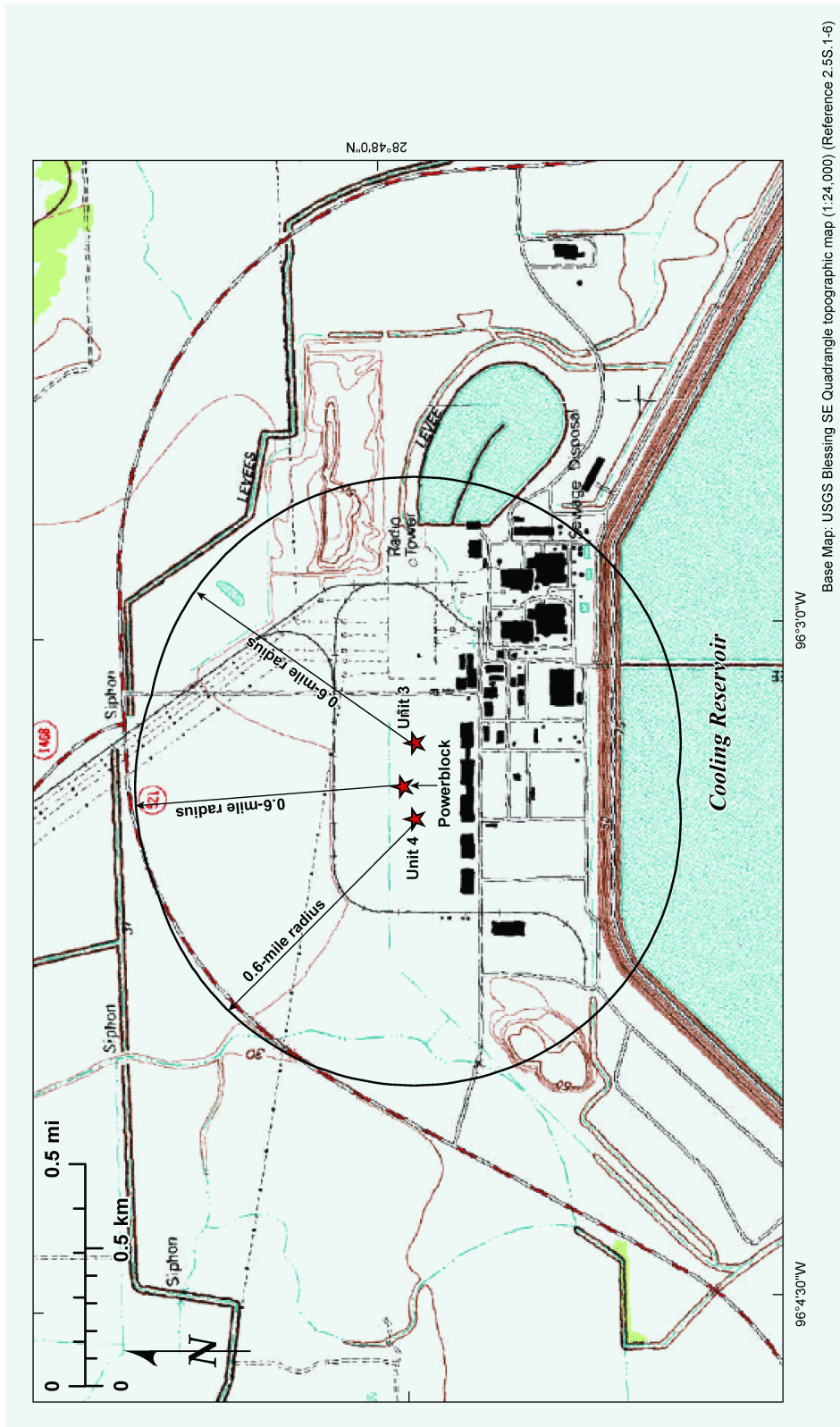


Figure 2.5S.1-4 Site Topographic Map (0.6-mile radius)



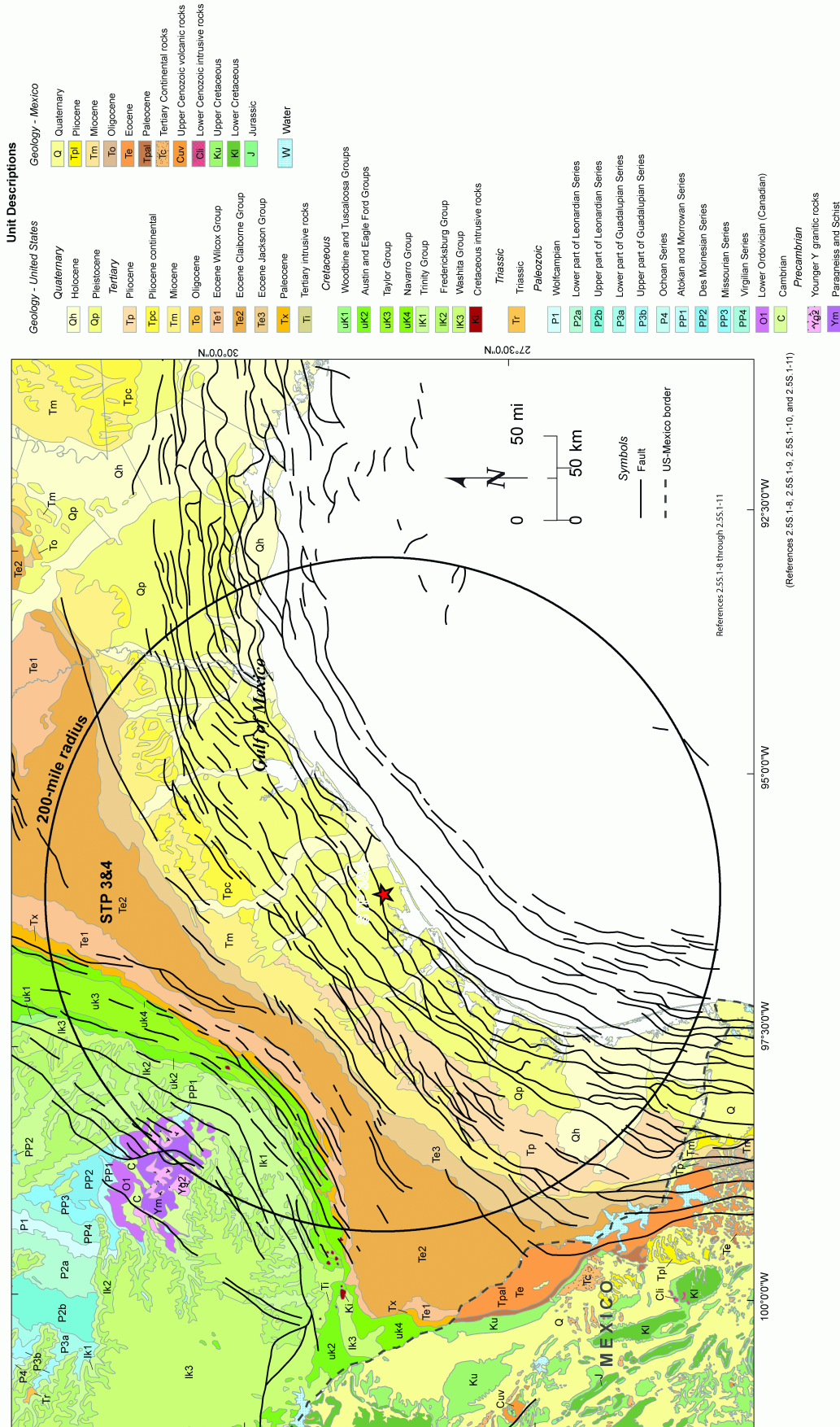


Figure 2.5S.1-5 Regional Geological Map (200-mile radius)

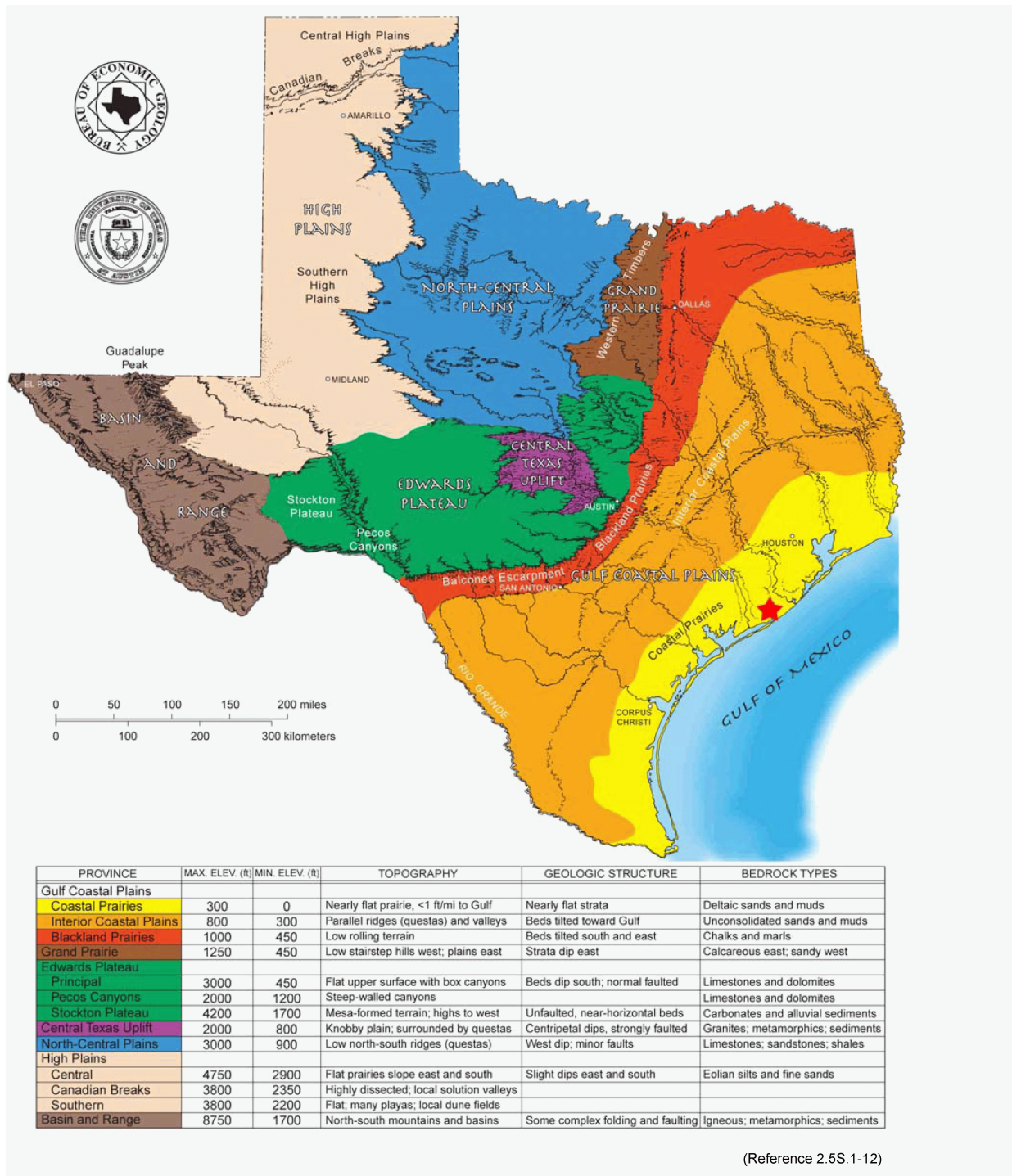
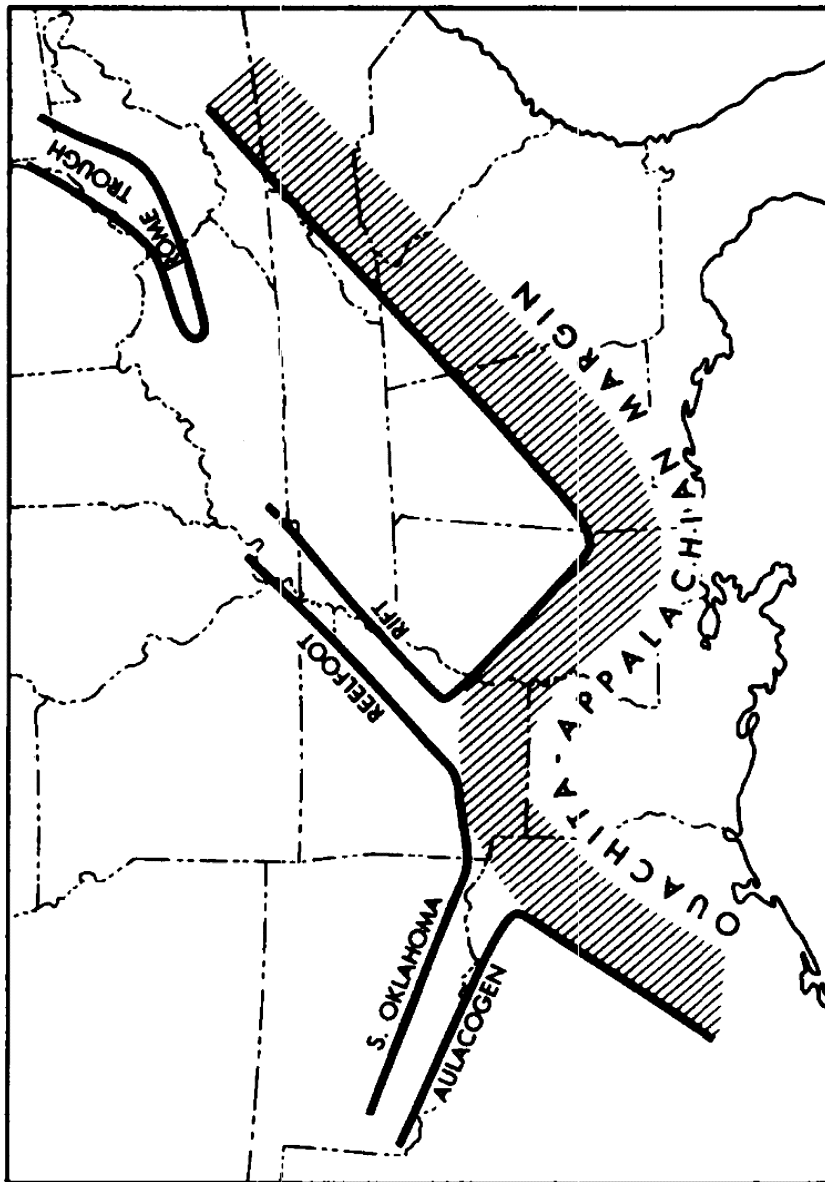


Figure 2.5S.1-6 Physiographic Map of Texas





(Reference 2.5S.1-19)

Figure 2.5S.1-7 Aluacogens of Laurentia

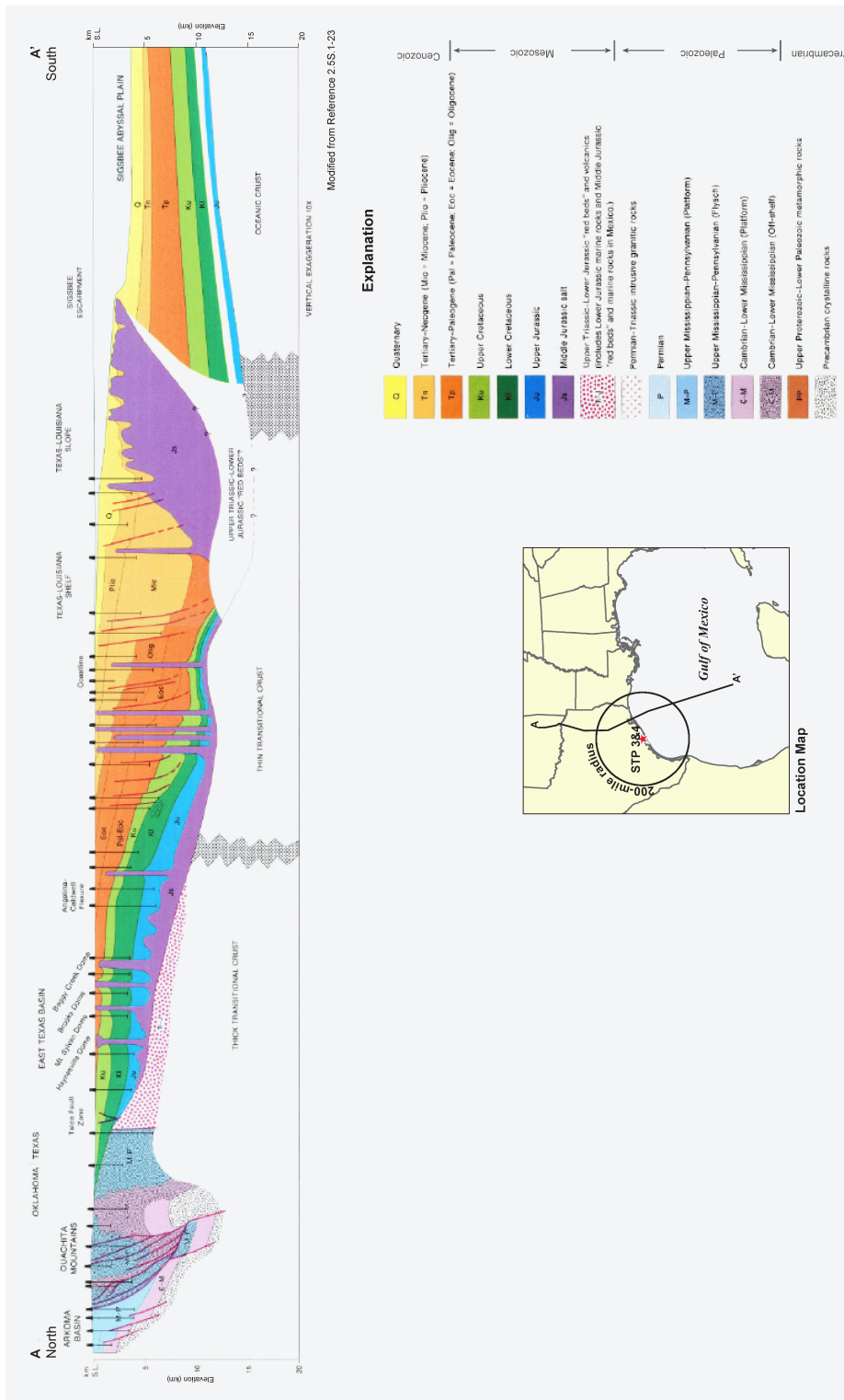


Figure 2.5S.1-8 Crustal Structure of the Quachita Mountains, Coastal Plain, and Northern Gulf of Mexico





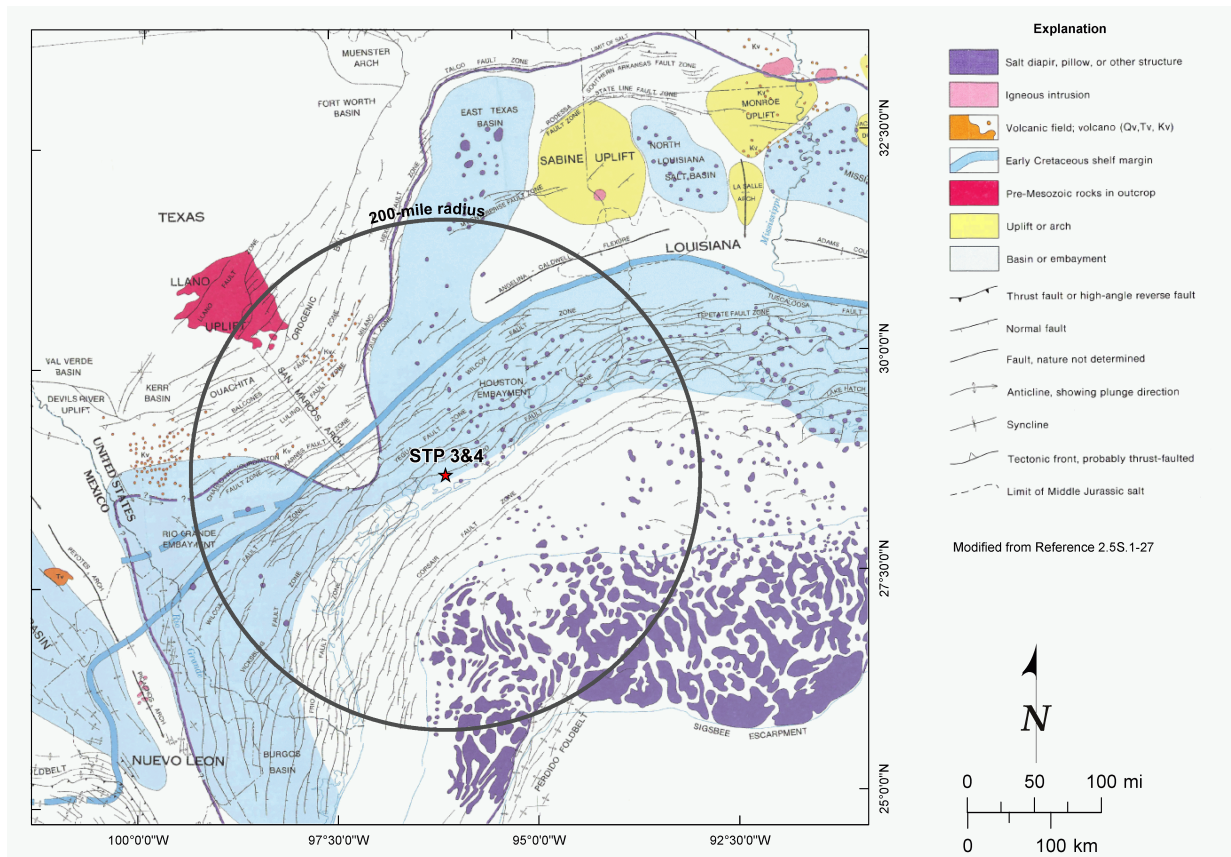


Figure 2.5S.1-10 Geologic Features of the Gulf Coast Region



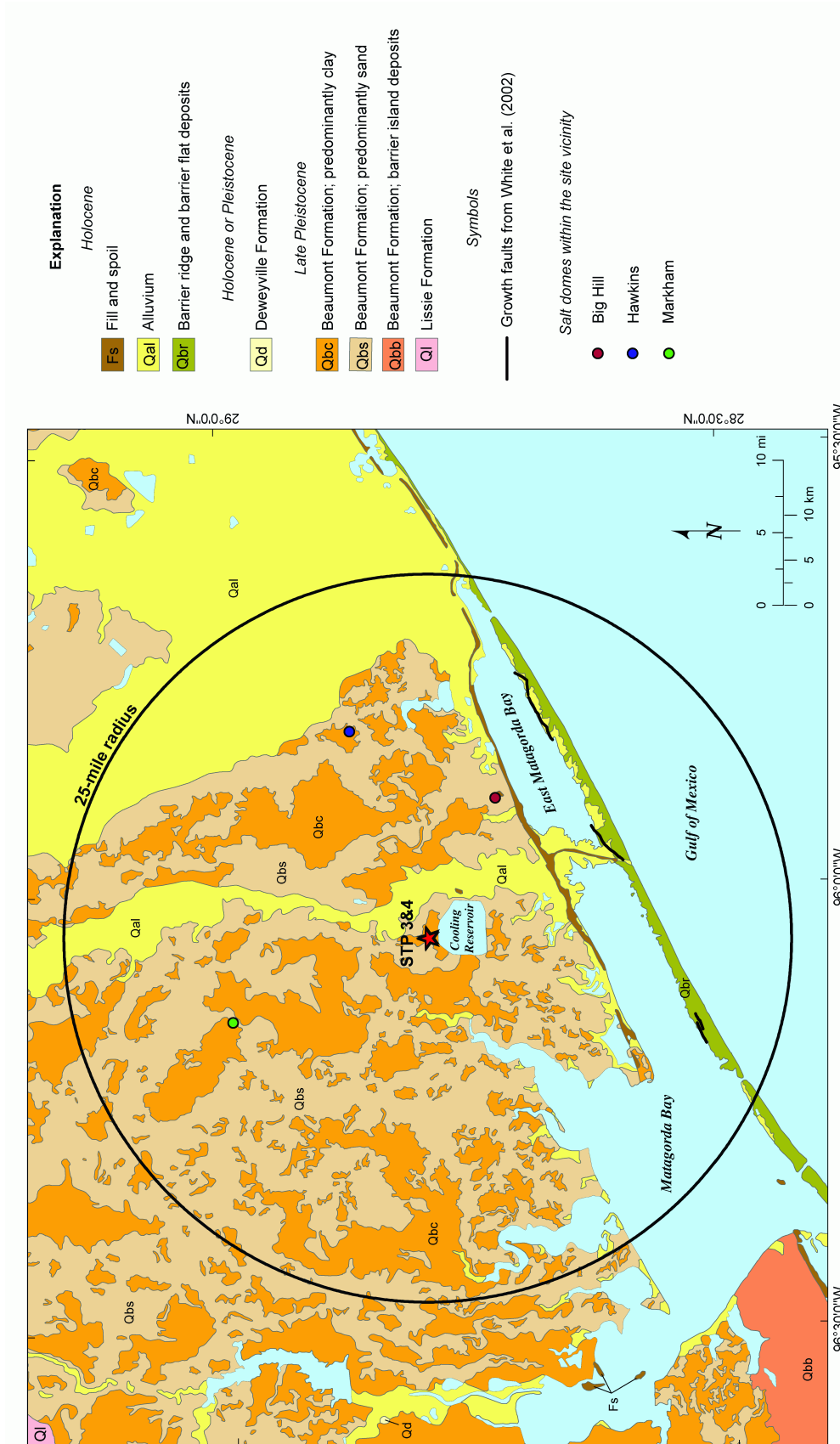
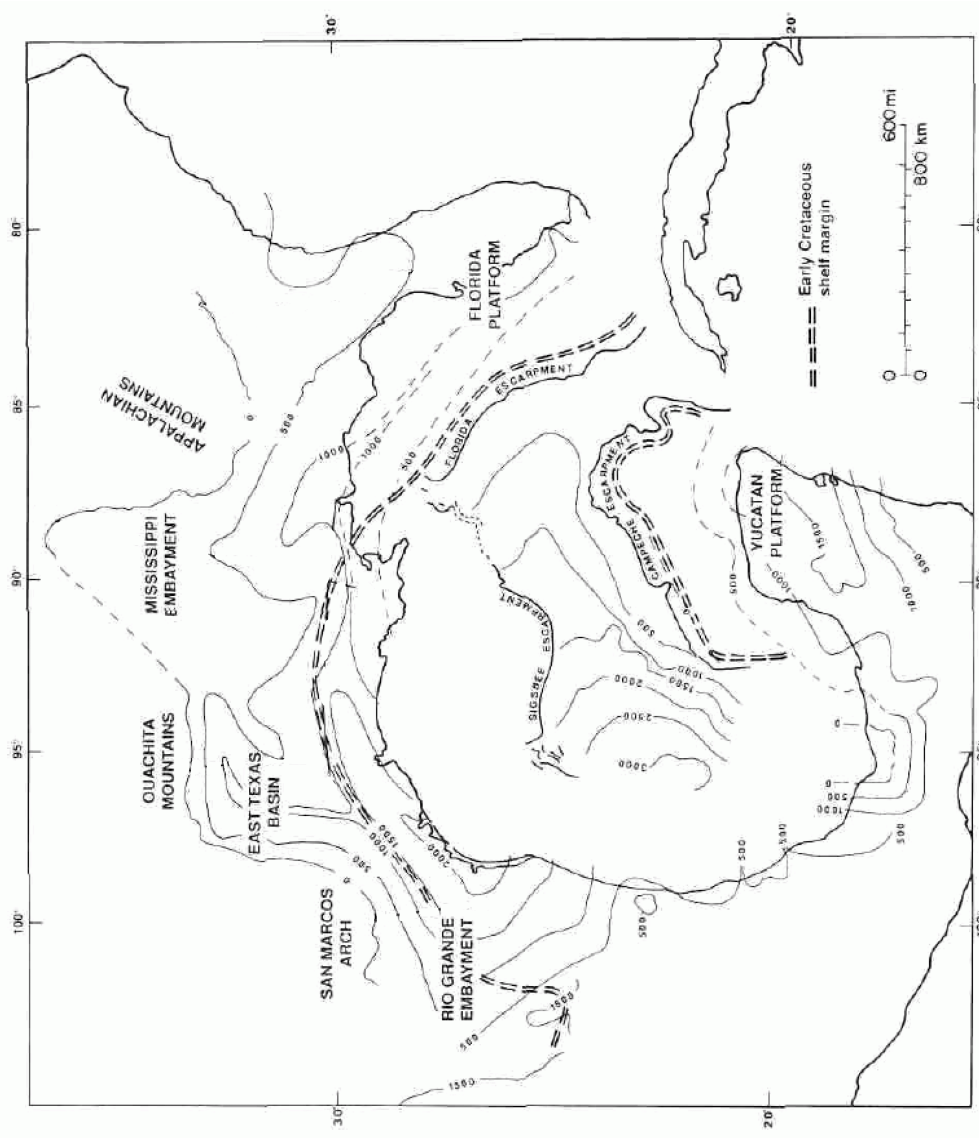


Figure 2.5S.1-11 Site Vicinity Geologic Map (25-mile radius)



Note: Thicknesses are in meters

(Reference 2.5S.1-32)

Figure 2.5S.1-12 Upper Cretaceous Isopach Map