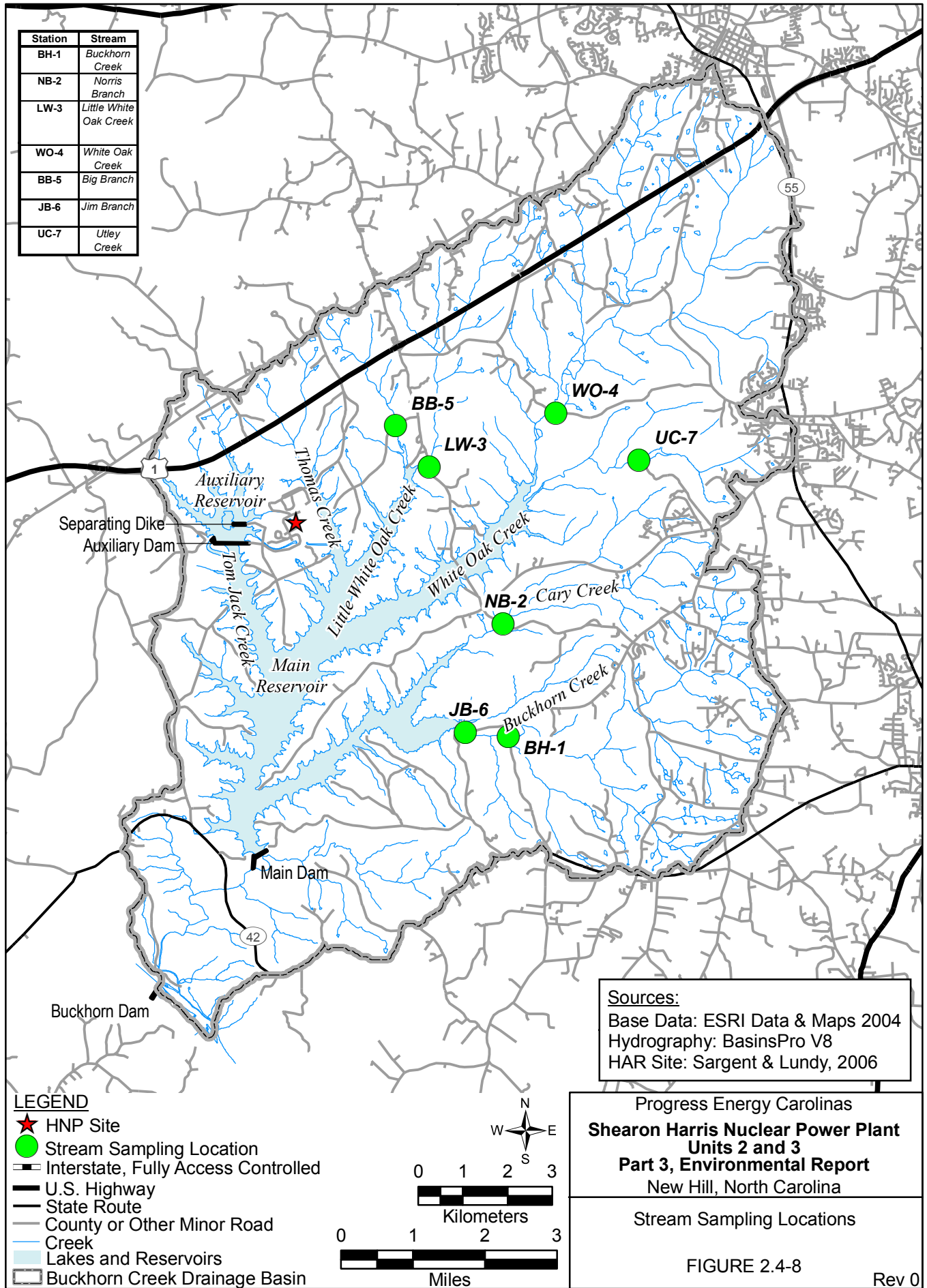


Station	Stream
BH-1	Buckhorn Creek
NB-2	Norris Branch
LW-3	Little White Oak Creek
WO-4	White Oak Creek
BB-5	Big Branch
JB-6	Jim Branch
UC-7	Utley Creek



Sources:
 Base Data: ESRI Data & Maps 2004
 Hydrography: BasinsPro V8
 HAR Site: Sargent & Lundy, 2006

Progress Energy Carolinas
**Shearon Harris Nuclear Power Plant
 Units 2 and 3
 Part 3, Environmental Report**
 New Hill, North Carolina

Stream Sampling Locations
 FIGURE 2.4-8
 Rev 0