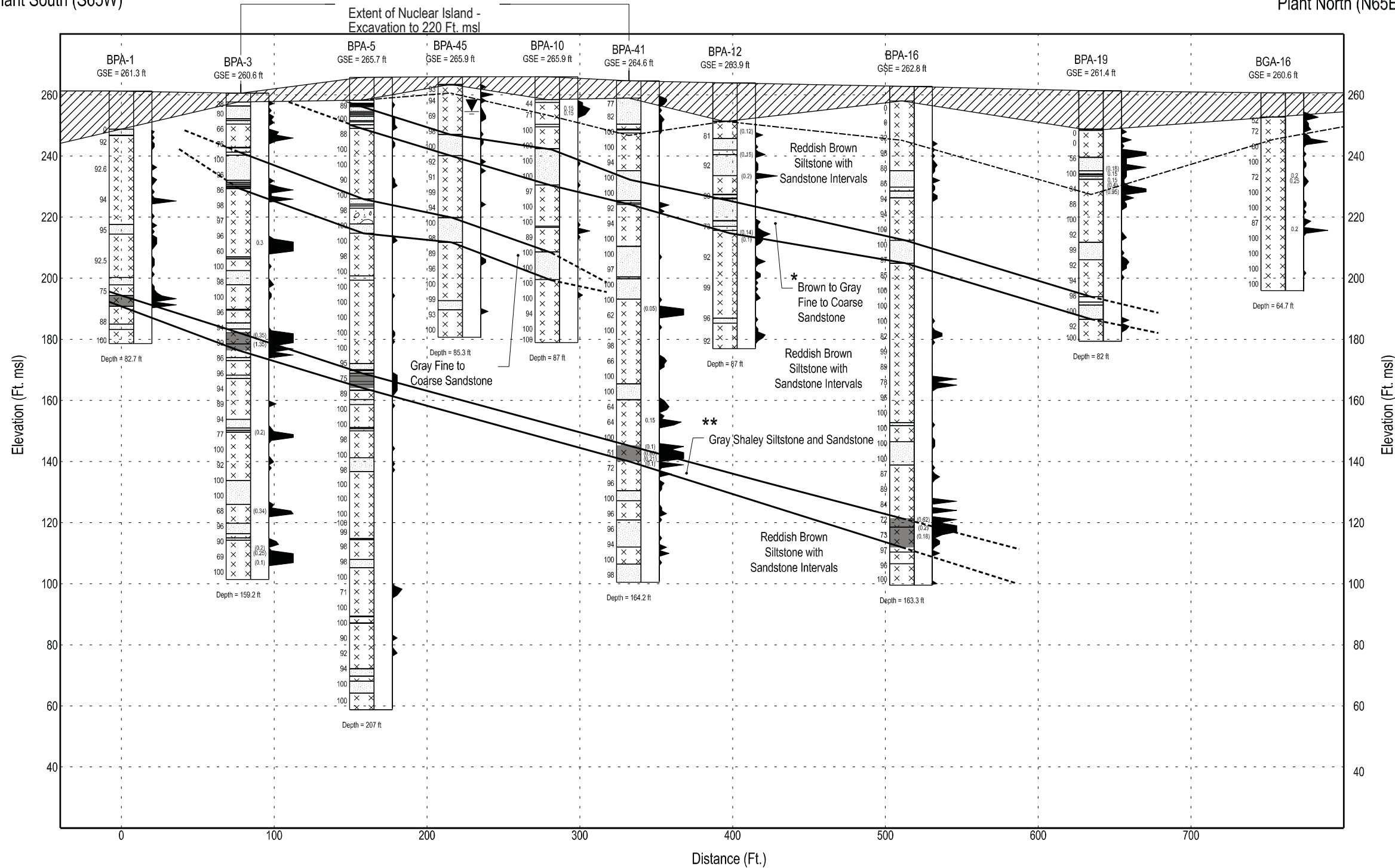


Plant South (S65W)

Plant North (N65E)

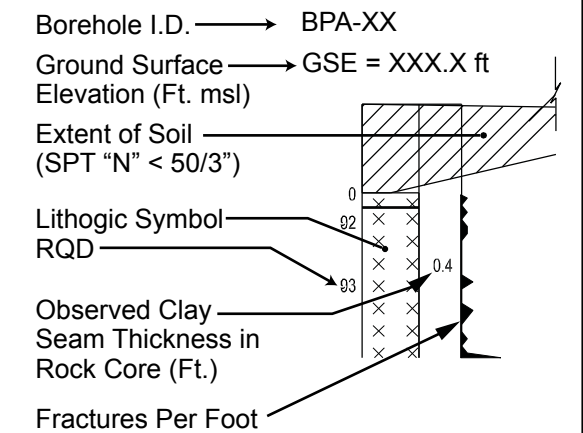


LEGEND

- * HAR 2 Marker Bed A
- ** HAR 2 Marker Bed B
- ▼ Ground Water Level
- Interpreted Lithology Correlation
- - - - Possible Lithology Correlation
- - - - Top of Sound Rock (See Table 2.5.4-201 for definition)
- Conglomerate
- Sandstone
- Shale
- Shaly Siltstone and Sandstone
- Siltstone
- Soil (N<50/3")

Vertical Scale: 1" = 40.0'
Horizontal Scale: 1" = 80.0'

DETAIL:



NOTES:

1. Clay seams or fracture zones with total clay thickness >0.1 ft. thick are shown at their approximate observed elevation. Values in parenthesis () indicate total clay thickness within fraction intervals.
2. See Table 2.5.4-201 for depths and descriptions of soil and top of sound rock.
3. See Figure 2.5.4-202 for Cross Section locations.

Progress Energy Carolinas
**Shearon Harris Nuclear Power Plant
 Units 2 and 3**
 Part 2, Final Safety Analysis Report
 New Hill, North Carolina

Stratigraphic Cross Section at HAR 2 -
 Plant South to North
 FIGURE 2.5.4-204A Rev. 0