

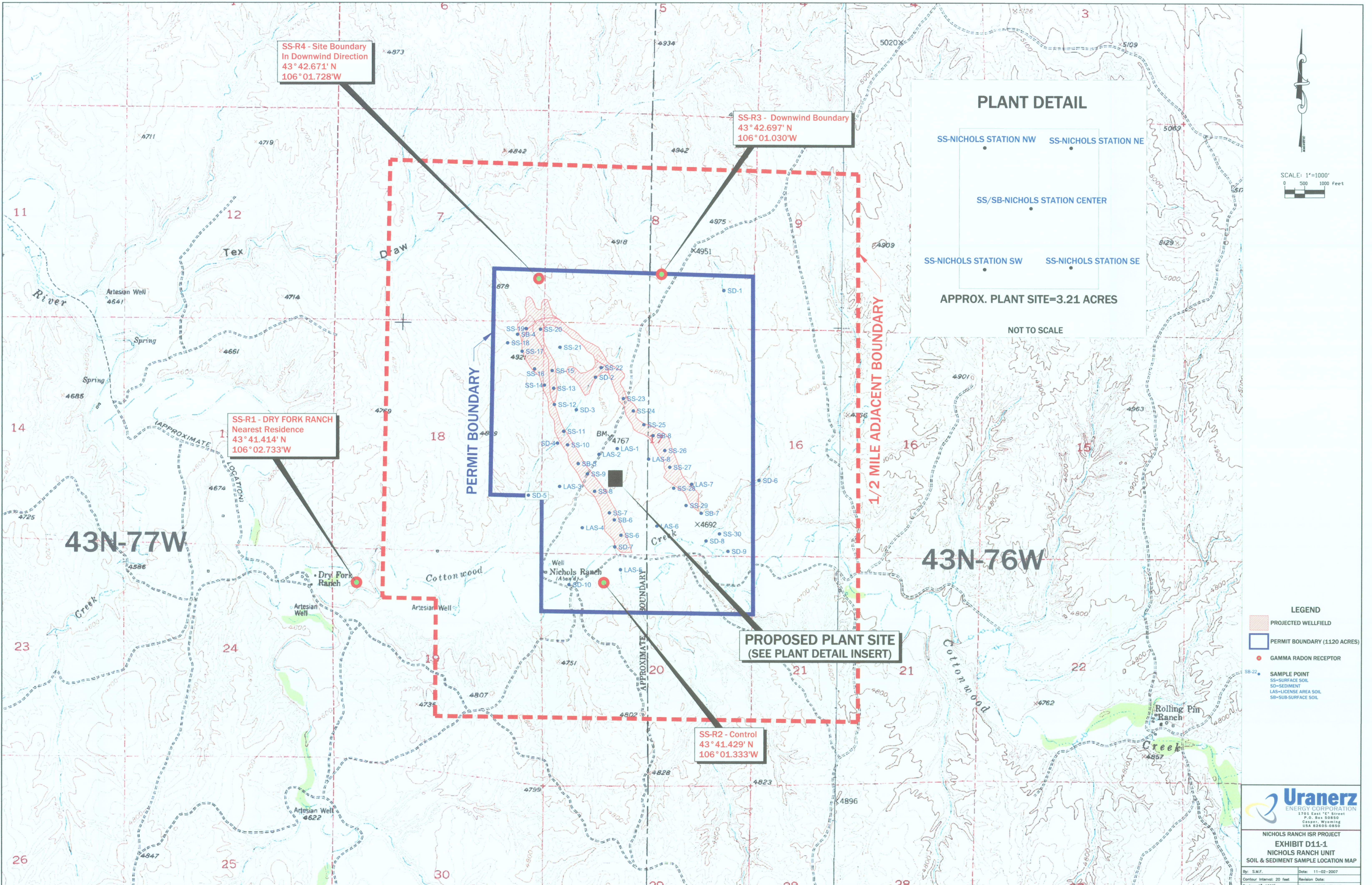
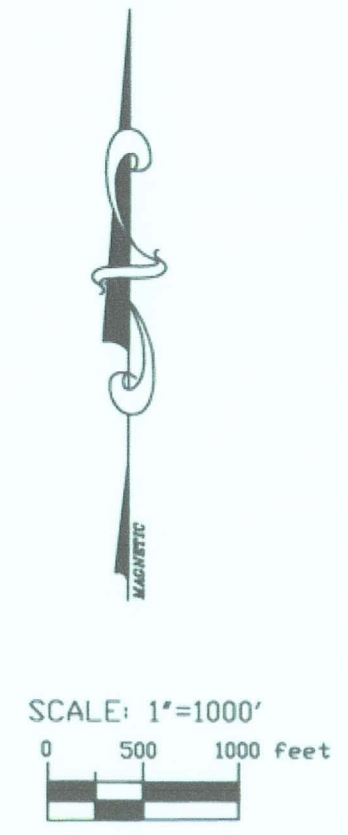
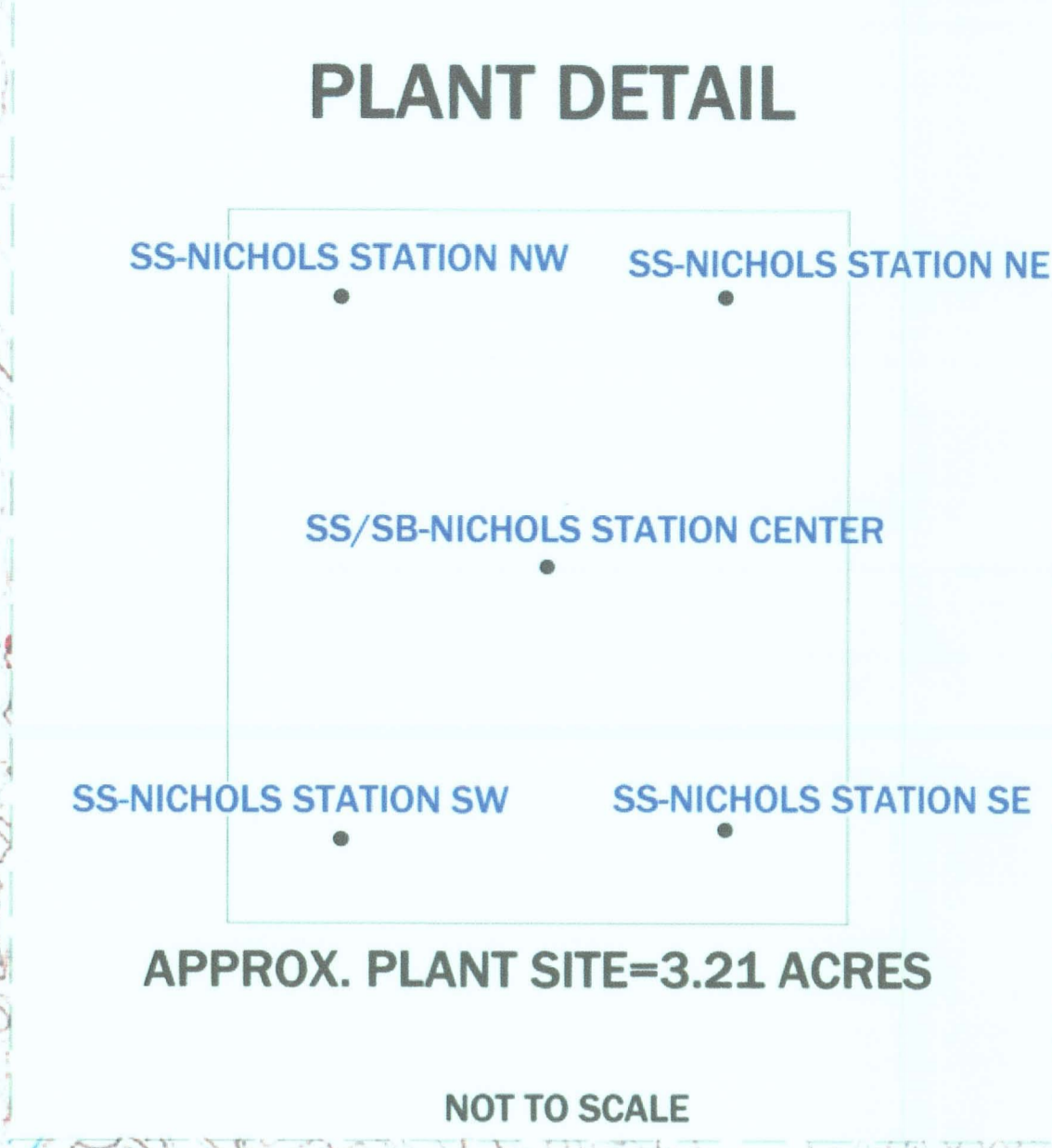
SS-R4 - Site Boundary  
In Downwind Direction  
43° 42.671' N  
106° 01.728' W

SS-R3 - Downwind Boundary  
43° 42.697' N  
106° 01.030' W

SS-R1 - DRY FORK RANCH  
Nearest Residence  
43° 41.414' N  
106° 02.733' W

PROPOSED PLANT SITE  
(SEE PLANT DETAIL INSERT)

SS-R2 - Control  
43° 41.429' N  
106° 01.333' W



- LEGEND**
- PROJECTED WELLFIELD
  - PERMIT BOUNDARY (1120 ACRES)
  - GAMMA RADON RECEPTOR
  - SAMPLE POINT
  - SS-SURFACE SOIL
  - SD-SEDIMENT
  - LAS-LICENSE AREA SOIL
  - SB-SUB-SURFACE SOIL



NICHOLS RANCH ISR PROJECT  
EXHIBIT D11-1  
NICHOLS RANCH UNIT  
SOIL & SEDIMENT SAMPLE LOCATION MAP

By: S.M.F.	Date: 11-02-2007
Contour Interval: 20 feet	Revision Date:
Scale: 1"=1000'	Datum: NAD27 UTM 13