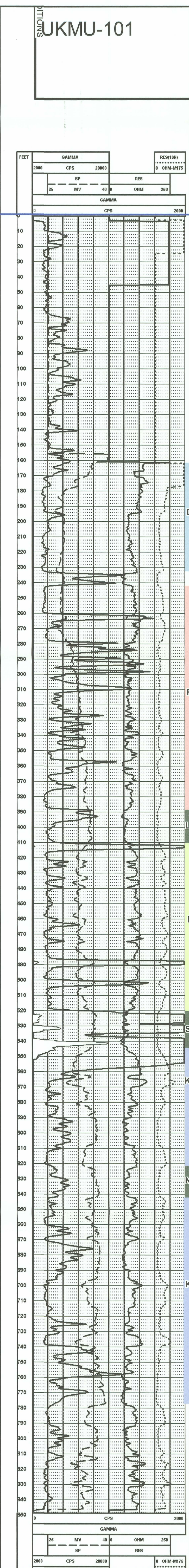
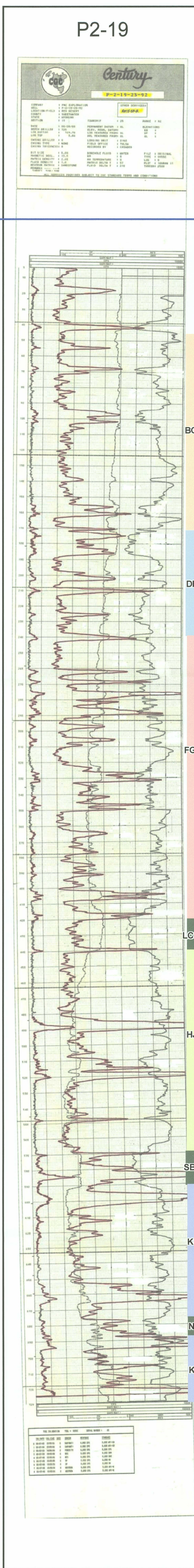
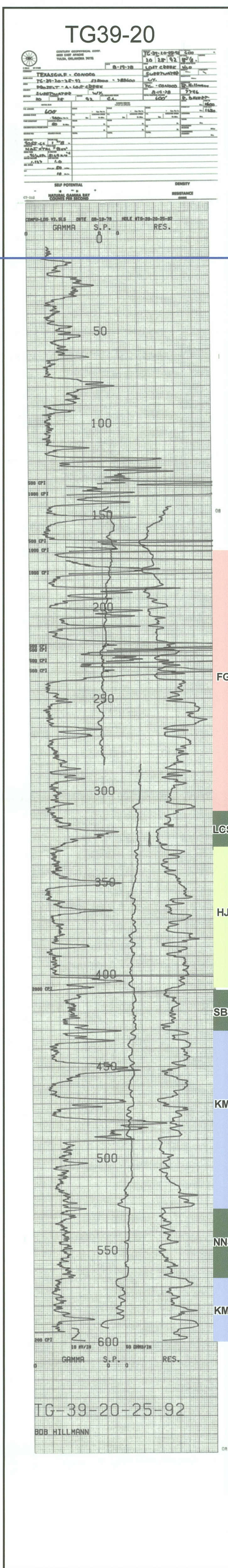
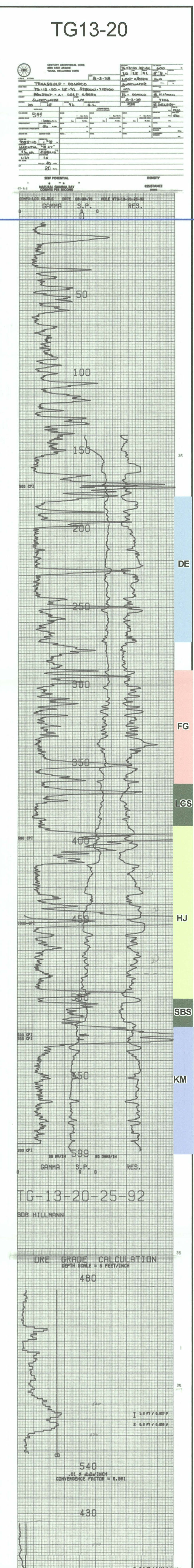


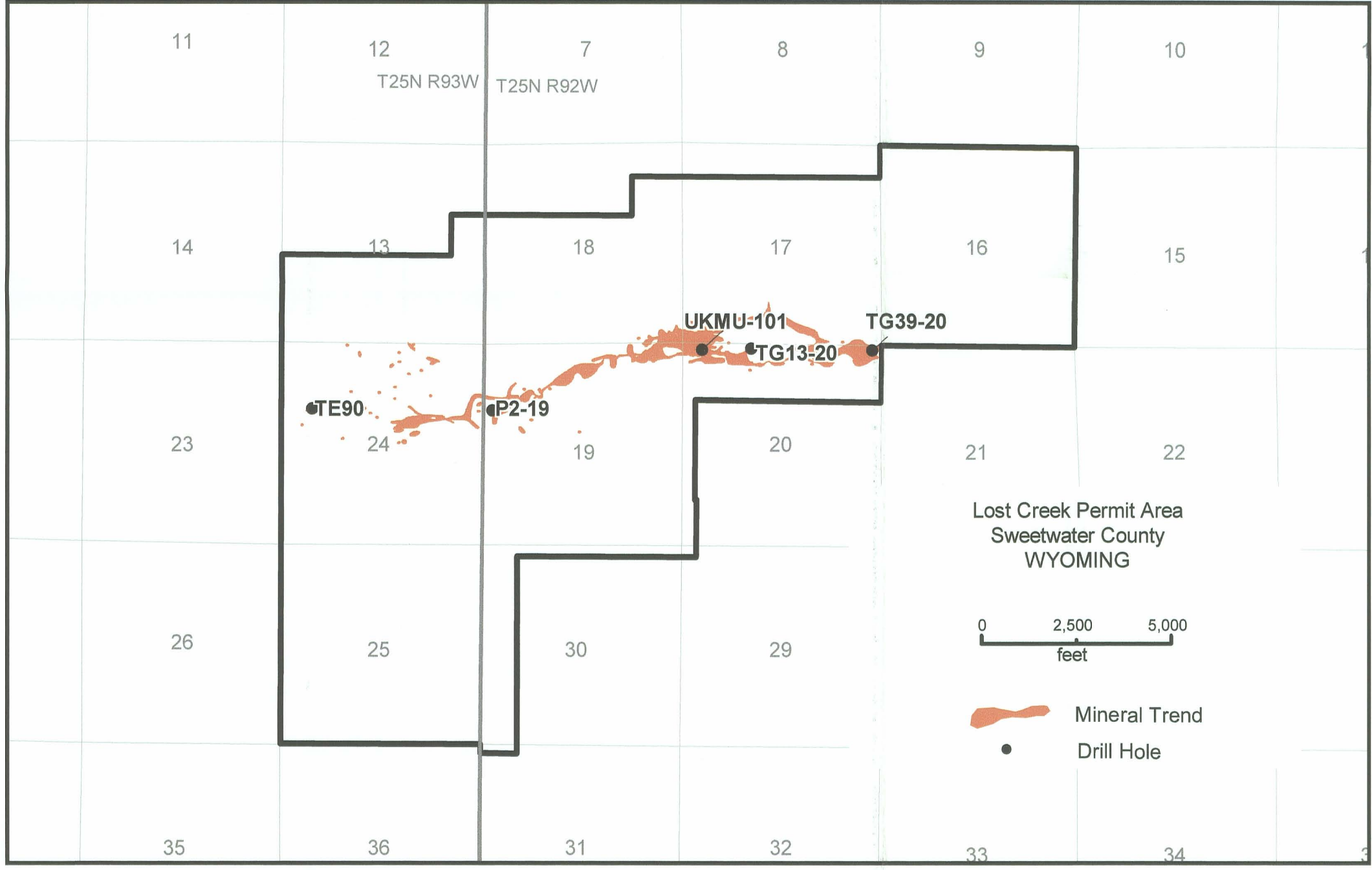
6940'



6940'



6940'



HOLEID	S	T	R	Northing	Easting	ELEV	TD	Year_Drilled
TE90	24	25	93	533200	733800	6936	700	1978
P2-19	19	25	92	533240	738578	6920	720	1988
UKMU-101	20	25	92	534931	744101	6939	850	2007
TG13-20	20	25	92	535000	745400	6942	600	1978
TG39-20	20	25	92	535000	748600	6950	600	1980

Lost Creek ISR, LLC
Littleton, Colorado, USA

AATA INTERNATIONAL
Fort Collins, Colorado, USA

Legend

- BC Horizon
- DE Horizon
- FG Horizon
- LCS (Lost Creek Shale)
- HJ Horizon
- SBS (Sagebrush Shale)
- KM Horizon
- NNS (No Name Shale)

**ATTACHMENT 3.4-1
Typical Geophysical Logs
Lost Creek Permit Area**

Issued For: NRC TR1.0 Drawn By: HA
 Issued/Revised: 10.10.07
 Drawing No.: NRCTR1.0 ATTACHMENT 3.4-1 10.10.07