

Figure 2.9-13

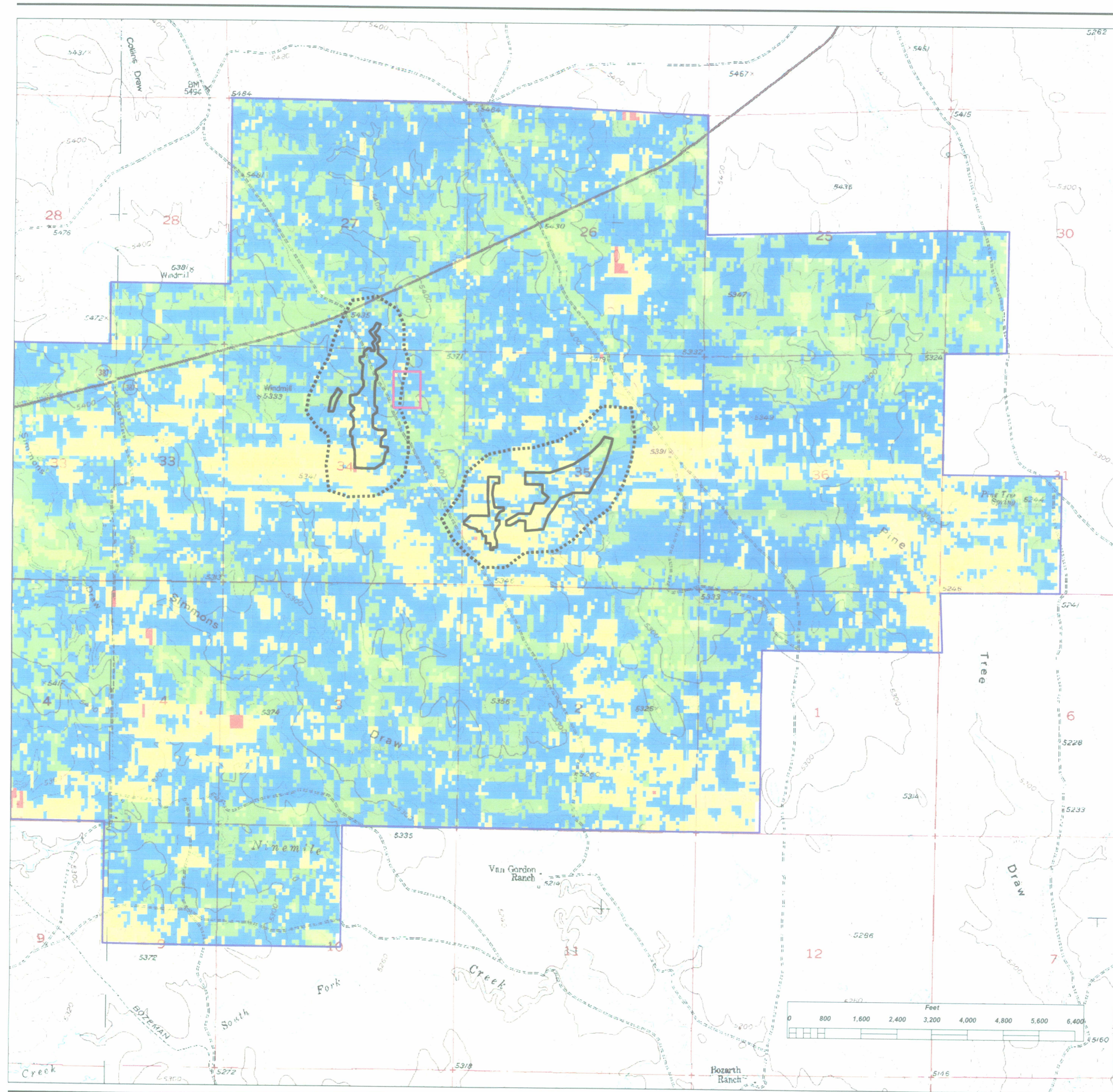
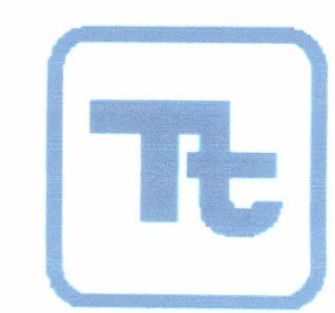
**MOORE RANCH KRIGING RESULTS:  
ESTIMATED 3-FOOT HPIC EQUIVALENT  
GAMMA EXPOSURE RATES**

**Legend**

- Plant Area
- Monitor Well Ring
- Permit Boundary
- Well Field

**Gamma Exposure Rate ( $\mu\text{R/hr}$ )**

|         |
|---------|
| < 12    |
| 12 - 13 |
| 13 - 14 |
| 14 - 15 |
| 15 - 16 |
| > 16    |



Prepared for:  
**Energy Metals Corporation**

July 15, 2007

Prepared by:  
**Tetra Tech, Incorporated**