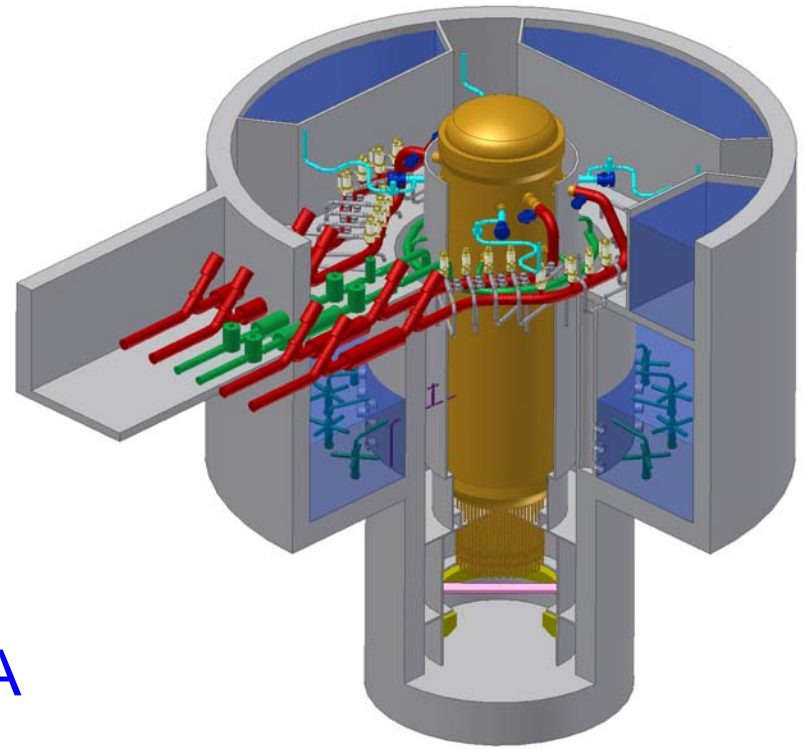


# ESWR Sensitivity Analyses



Richard Wachowiak  
GE-Hitachi Nuclear Energy  
Technical Lead for ESBWR PRA

Presented to USNRC July 18, 2007

# PRA Revision 1

Bounding analysis

> Data

- Basic events
- Initiators

Limited operator actions and recoveries

Success criteria

# PRA Revision 2

Used same principles

- > High end squib valve data
- > High end digital failures
- > Screening values for limited operator actions

Search for data / configurations that may not be bounding

In Design Phase



CONFIGURATION

Is Key to Low Risk

# Revision 2 Sensitivities

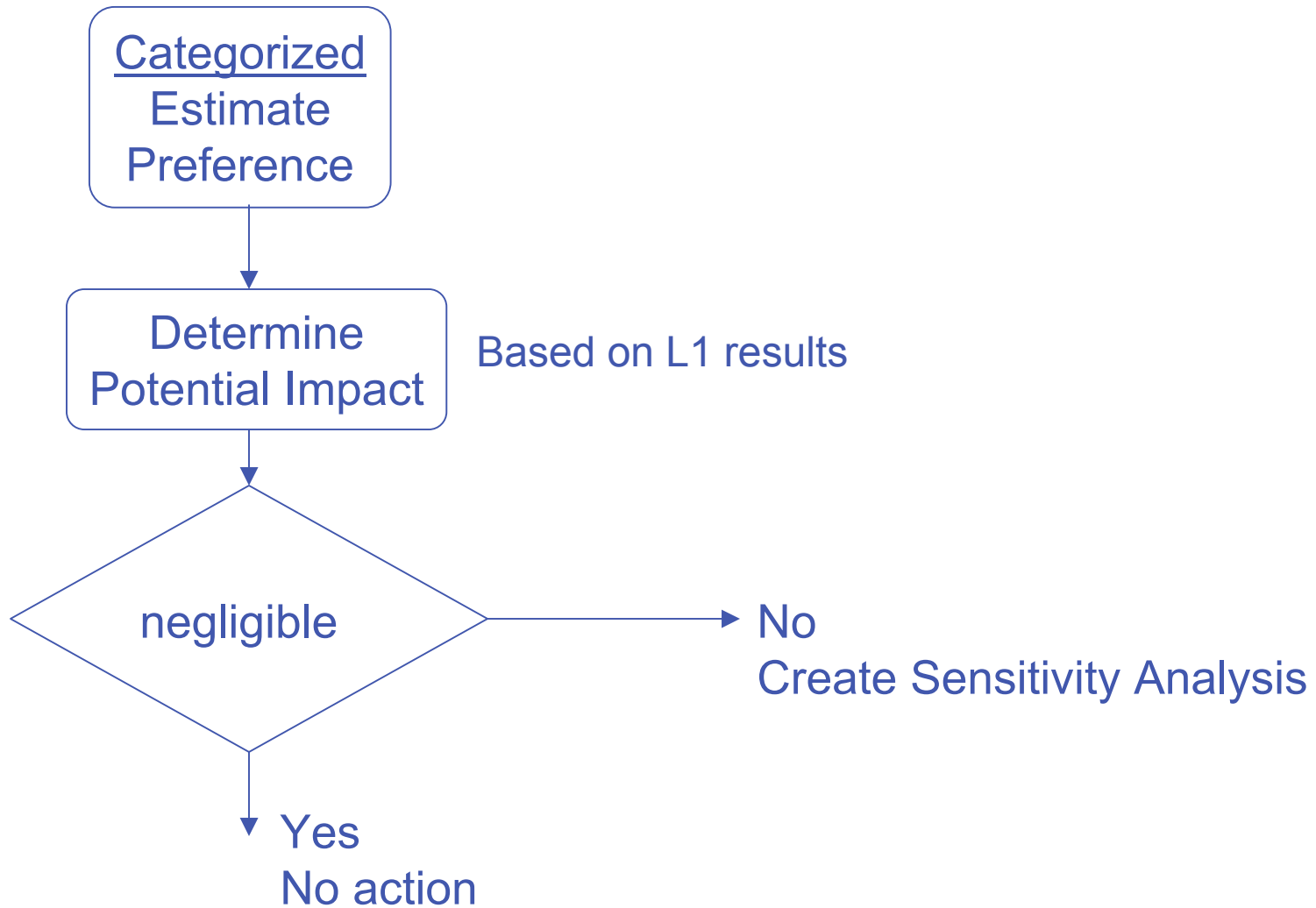
Systematic process for determining sensitivities

Two categories

- > Estimates
- > Modeling preferences

Reviewed all assumptions and insights

# Level 1 – Identified ~250 Candidates



# So Far.....

Approximately 20 sensitivity analyses  
Will include in chapter 11