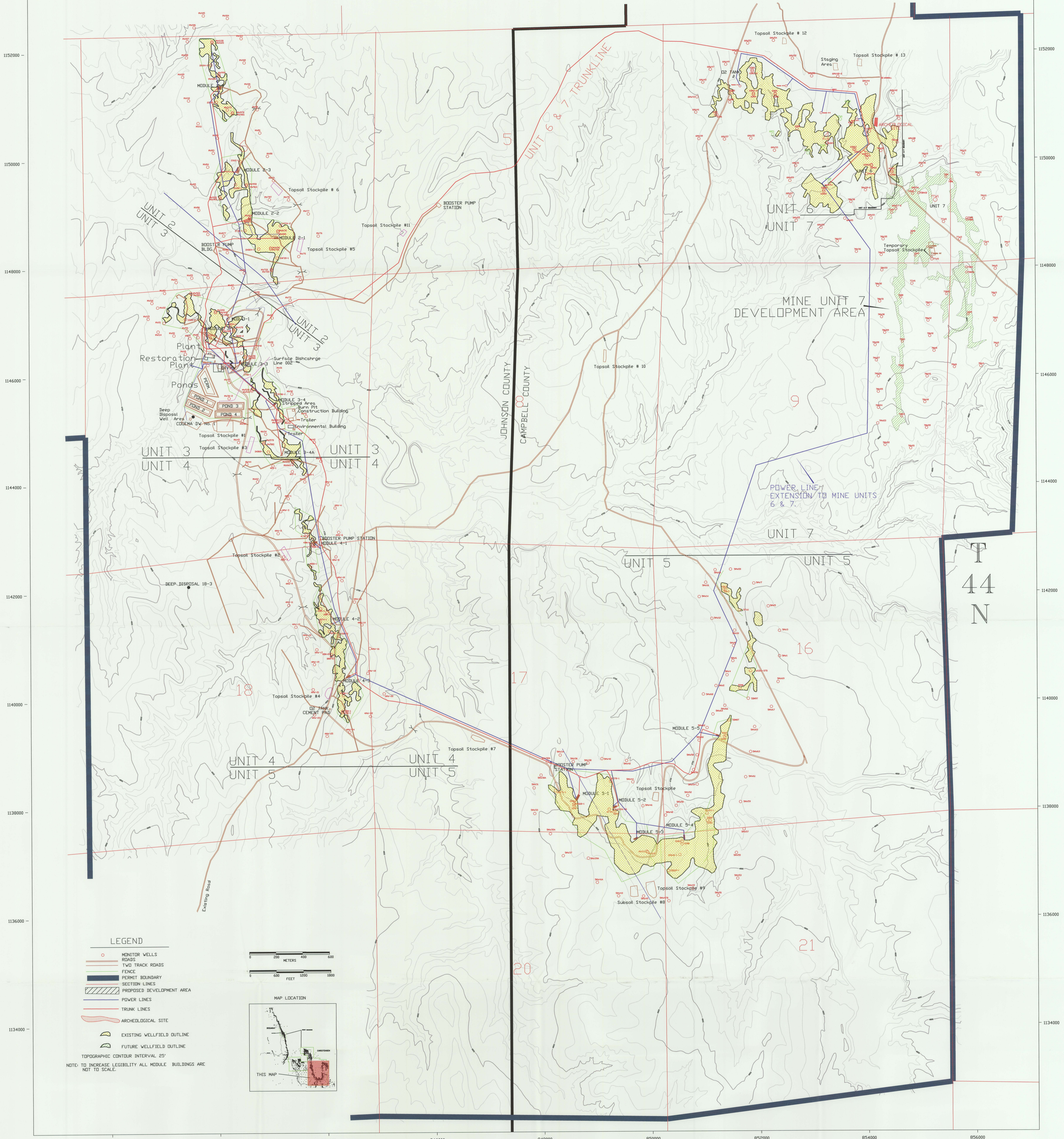
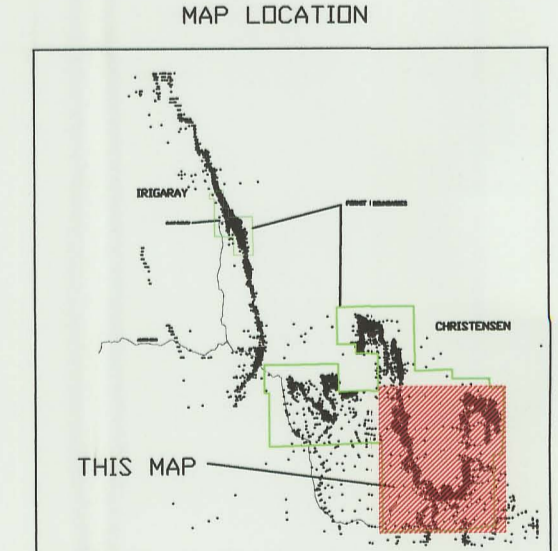
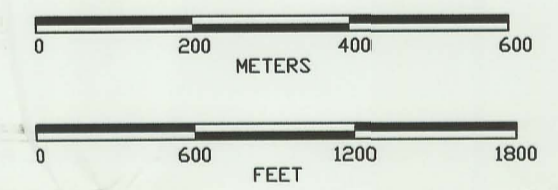


R 76 W



LEGEND

- MONITOR WELLS
 - TWO TRACK ROADS
 - FENCE
 - PERMIT BOUNDARY
 - SECTION LINES
 - PROPOSED DEVELOPMENT AREA
 - POWER LINES
 - TRUNK LINES
 - ARCHEOLOGICAL SITE
 - EXISTING WELLFIELD OUTLINE
 - FUTURE WELLFIELD OUTLINE
- TOPOGRAPHIC CONTOUR INTERVAL 25'
NOTE: TO INCREASE LEGIBILITY ALL MODULE BUILDINGS ARE NOT TO SCALE.



COGEMA Mining, Inc
Christensen Project

Area Facilities Location Map
Permit to Mine # 478

Geology: S. Bottero
Errors: L. Arbogast
Drafting: [Name]
Date: 8-1-2007
Revision:

State: Wyoming County: Johnson/Campbell
Scale: 1"=600'
Drawing ID: CR Site 2007.dwg

