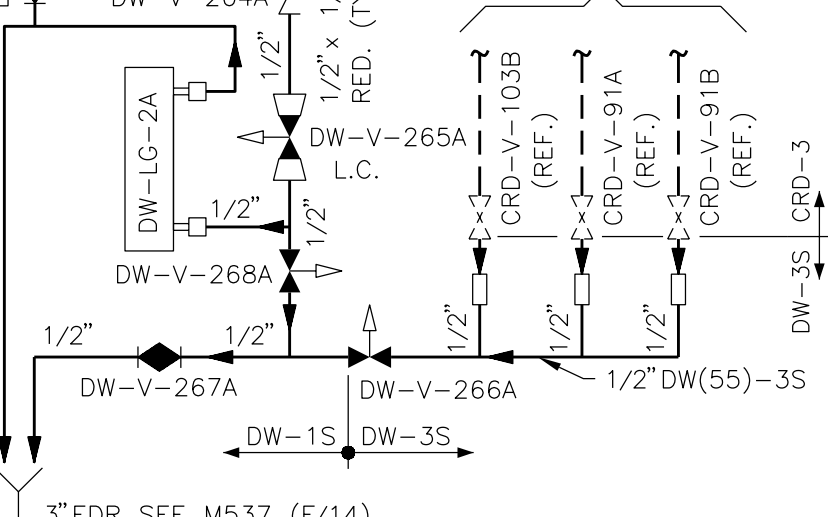
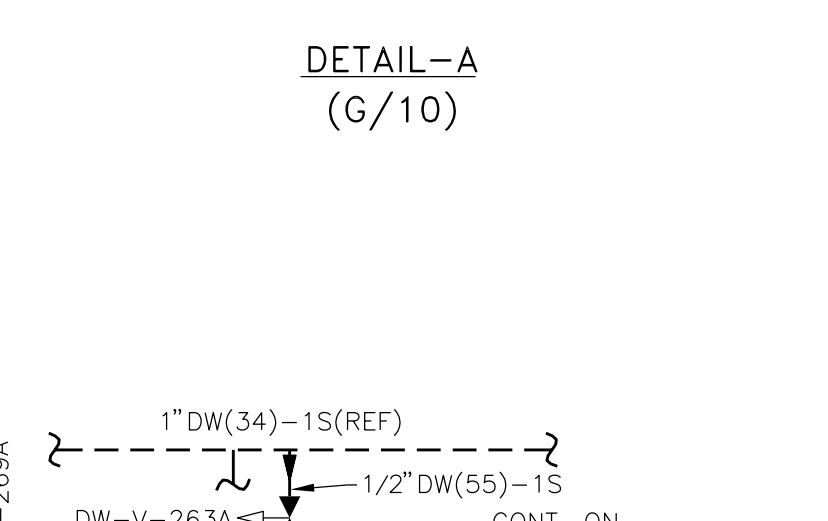
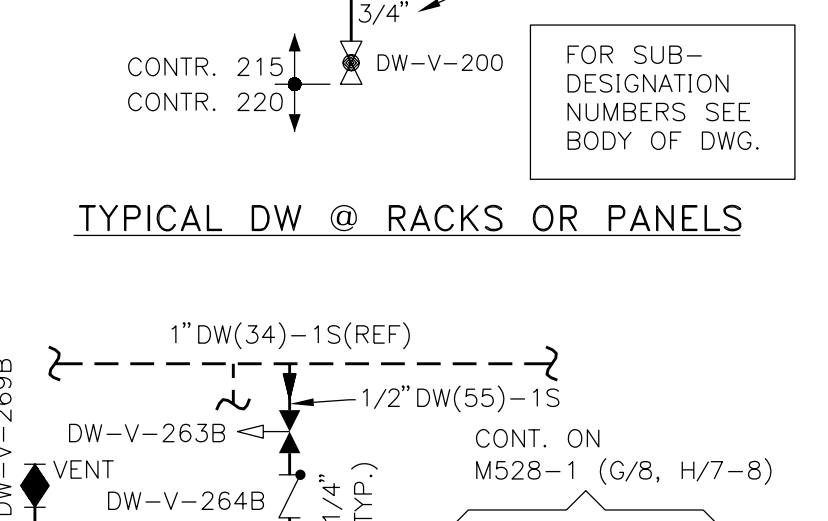
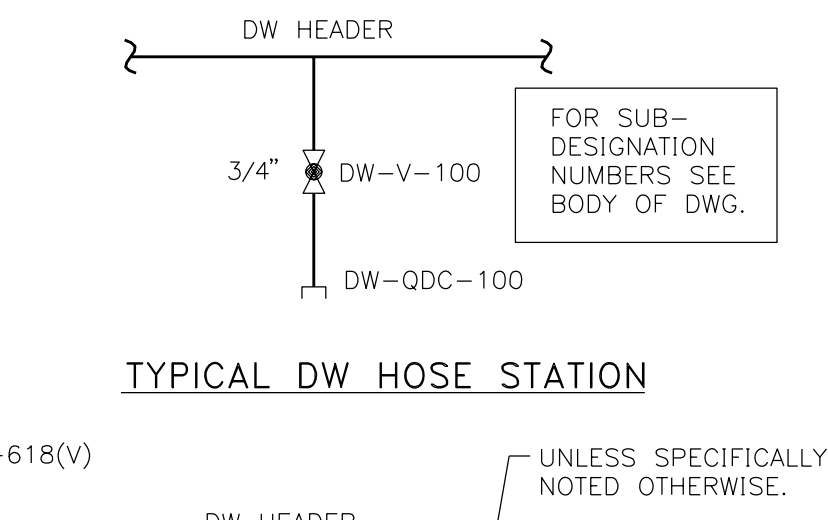


- NOTES**
1. ALL PIPING, VALVES, AND COMPONENTS ON THIS DRAWING SHALL BE CLASSIFIED AS FOLLOWS:
 QUALITY CATEGORY II
 SEISMIC CATEGORY D
 EXCEPT WHERE NOTED ON DWG.
 2. ALL ITEMS MARKED * ARE FURNISHED WITH ASSOCIATED EQUIPMENT.
 3. ALL PIPING, VALVES, AND ASSOCIATED COMPONENTS ON THIS DRAWING, WITHIN THE REACTOR AND DIESEL GENERATOR BUILDING, SHALL BE CLASSIFIED AS FOLLOWS:
 QUALITY CATEGORY II
 SEISMIC CATEGORY D
 CODE GROUP D
 * HANGERS TO BE DESIGNED TO SEISMIC CATEGORY I LOADS.
 4. ALL INSTRUMENT ROOT VALVES NOT LABELED WILL BE 3/4" GLOBE VALVES UNLESS SPECIFICALLY NOTED OTHERWISE.
 5. THESE COMPUTER INPUT POINTS ARE NOT USED.
 6. THE DEMINERALIZED WATER SYSTEM IS NO LONGER USED TO BACKFLUSH THE RHR HEAT EXCHANGERS, THE CONDUCTIVITY CELLS, PROBES, & ASSOCIATED CIRCUITRY ARE DISABLED AND LEFT IN PLACE AS SHOWN BECAUSE OF ALARMA CONSIDERATIONS.
 7. SCOPED AND HATCHED AREAS ARE DEFERRED FOR LATER PRE-OPERATIONAL TESTING AND ARE NOT PRESENTLY OPERATIONAL.



- LEGEND**
- 1.) ALL VALVES SUFFIXED WITH A (V) DENOTE A 3/4" VENT VALVE.
 - 2.) ALL VALVES SUFFIXED WITH A (D) DENOTE A 3/4" DRAIN VALVE.
 - 3.) ALL VALVES SUFFIXED WITH A (TH) DENOTE A THROTTLED VALVE.

FSAR FIG.

REV	DATE	DESCRIPTION	DWG	CHK	APP'D	SIGNATURE	DATE	TITLE
92	11-16-00	REDRAWN PER 0623-0004.	AF/SS	KL	DM	APPROVED		
93	2-15-01	REV PER 94-0274-50-331 (G-H/2-3)	NT	KL	SRP	CURTIS M. MOORE	11-16-00	
94	4-11-02	REV PER 93-0058-0A-302 (K/L/15, H-J/12) 93-0058-0A-A19 (H/12), 01422-011 (E/3-4, G/14), 01424-007 (J-U/10), 01474-009 (G-H/14-15), 01486-009 (V/8-9), 01496-009 (G/13,15).	NT	HL	SRP	CHECKED		
95	5-16-03	REV PER 02414-008 (G/2)	DMS	KB	SRP	KATHY LUCAS	11-16-00	
						B. L. STAFFORD	8-29-00	
						ADAM R. FULLER	06-23-98	

SCALE: NTS
 DRAWN BY: B. L. STAFFORD, ADAM R. FULLER
 CHECKED BY: KATHY LUCAS
 APPROVED BY: CURTIS M. MOORE
 DATE: 11-16-00
 TITLE: FLOW DIAGRAM DEMINERALIZED WATER SYSTEM ALL BUILDINGS
 DWG NO: MS17
 REV: 95