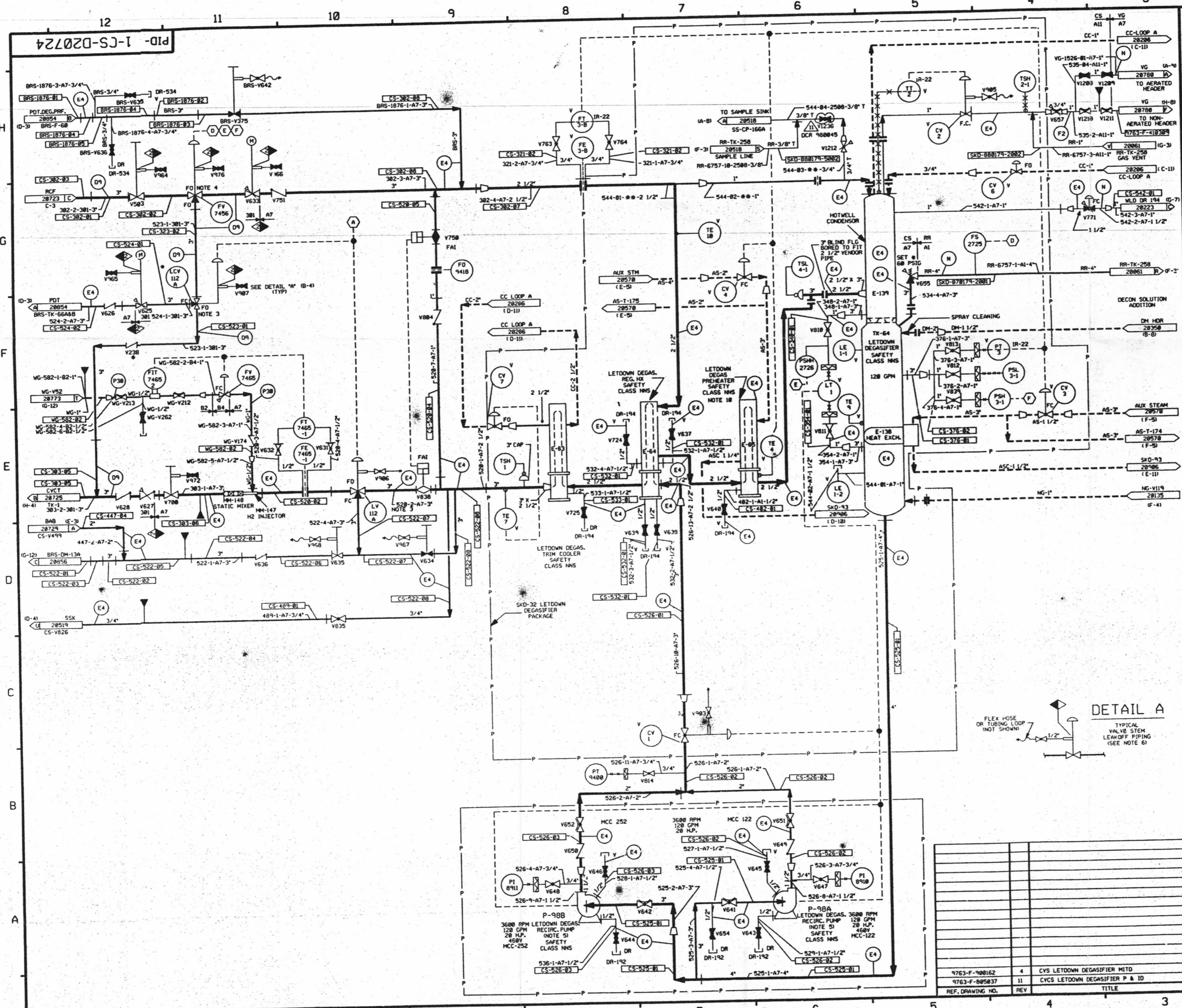


FOR INFORMATION ONLY



FOR PAID REFERENCE DRAWINGS, SYMBOLS AND ABBREVIATIONS REFER TO DRAWINGS PAID - LEGEND 1 AND PAID - LEGEND 2

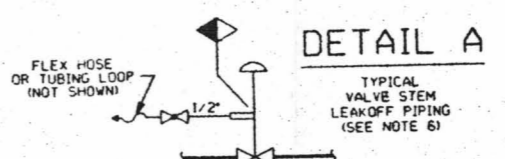
**LEGEND**

TEST	DESIGN PRESSURE	TEST PRESSURE	MIN. TEST TEMP. F.	TEST MEDIUM
Y	TEST BOUNDARY			
YB	TEMPORARY TEST BOUNDARY			
(P30)	75 PSIG	90/112 PSIG	35	AIR/N <sub>2</sub>
(P9)	240 PSIG	300/318 PSIG	35	WATER
(F2)	15 PSIG	18/22.5 PSIG	35	AIR/N <sub>2</sub>
(E4)	150 PSIG	225/245 PSIG	35	WATER
(P27)	75 PSIG	94/100 PSIG	35	AIR/N <sub>2</sub>
(N)	NO TEST REQUIRED			

NOTE:  
A. VENTS & DRAINS WITH CAPS/BLIND FLANGES ETC. SHALL BE TESTED TO THE LAST ISOLATION VALVE.

- NOTES:**
1. WORK THIS DWG WITH DWGS 20720, 20722, 20723, & 20725 THRU 20728.
  2. ALL PIPING, VALVES, EQUIP & INSTRUMENTS HAVE SYSTEM PREFIX 'CS' UNLESS NOTED OTHERWISE.
  3. VALVE FAILS WITH FLOW TO CVCT.
  4. VALVE FAILS WITH FLOW TO LCY-112A.
  5. SIZE DWG 20754 FOR WATER SUPPLY TO PUMP DOUBLE MECHANICAL SEALS. REFER TO DWG VSL-20774 FOR VALVE LEAKOFFS.
  7. INSTRUMENTATION REFERENCES:  
CHEM VOL CONTROL TK CS-TK-11 LEVEL LT-112E & LT-105 (F-5)
  - (D, E, F) TO I-CS-CV-3, I-CS-CV-4 (AS-20870), I-DM-V285 (DM-20850) AND I-CS-FV-7456 (CS-20724).
  8. CLEANLINESS CLASS "B".
  9. SYSTEM DESCRIPTION NO. 37.
  10. THESE ITEM SUPPLIED BY SENTRY.
  11. Δ INDICATES REVISION LEVEL.
  12. Δ INDICATES VALVE SUPPLIED BY WESTINGHOUSE.
  13. V INDICATES INSTRUMENTATION SUPPLIED BY SENTRY.
  14. \*\* DENOTES PIPING TO BE SCH 80S-SMLS TP 304, SA 312.

PORTIONS OF THIS DRAWING ARE  
**NUCLEAR SAFETY RELATED**



REV	DATE	DSGN	DRWN	CHKD	CDE	SES	DESCRIPTION
11	11/01/99	DWS	---	PRB	DWS	DJM	INCORP DCR 880845 DCM#4
9	11-2-92	DWS	---	MRB	BCL	DJM	INCORP DCR 880179 C415 & 1E
8	8-26-92	DWS	---	BCL	MRB	WFZ	INCORP DCR 880874 C415 & 1E
7	11/13/92	MRB	---	BCL	DWS	JEV	INCORP DCR 880874 C415 & 1E
6	12/15/87	MRB	PMC	PAL	APL	ES	INCORP DCR 88-113 CA 1
5	5/30/88	GPM	RHC	APL	BCL	PAS	REVISED VALVE SYMBOLS V618, 630, 634, 725, 837, 724, 725, 726, 727, 728, 729, 730, 731, 732, 733, 734, 735, 736, 737, 738, 739, 740, 741, 742, 743, 744, 745, 746, 747, 748, 749, 750, 751, 752, 753, 754, 755, 756, 757, 758, 759, 760, 761, 762, 763, 764, 765, 766, 767, 768, 769, 770, 771, 772, 773, 774, 775, 776, 777, 778, 779, 780, 781, 782, 783, 784, 785, 786, 787, 788, 789, 790, 791, 792, 793, 794, 795, 796, 797, 798, 799, 800, 801, 802, 803, 804, 805, 806, 807, 808, 809, 810, 811, 812, 813, 814, 815, 816, 817, 818, 819, 820, 821, 822, 823, 824, 825, 826, 827, 828, 829, 830, 831, 832, 833, 834, 835, 836, 837, 838, 839, 840, 841, 842, 843, 844, 845, 846, 847, 848, 849, 850, 851, 852, 853, 854, 855, 856, 857, 858, 859, 860, 861, 862, 863, 864, 865, 866, 867, 868, 869, 870, 871, 872, 873, 874, 875, 876, 877, 878, 879, 880, 881, 882, 883, 884, 885, 886, 887, 888, 889, 890, 891, 892, 893, 894, 895, 896, 897, 898, 899, 900, 901, 902, 903, 904, 905, 906, 907, 908, 909, 910, 911, 912, 913, 914, 915, 916, 917, 918, 919, 920, 921, 922, 923, 924, 925, 926, 927, 928, 929, 930, 931, 932, 933, 934, 935, 936, 937, 938, 939, 940, 941, 942, 943, 944, 945, 946, 947, 948, 949, 950, 951, 952, 953, 954, 955, 956, 957, 958, 959, 960, 961, 962, 963, 964, 965, 966, 967, 968, 969, 970, 971, 972, 973, 974, 975, 976, 977, 978, 979, 980, 981, 982, 983, 984, 985, 986, 987, 988, 989, 990, 991, 992, 993, 994, 995, 996, 997, 998, 999, 1000
4	12/15/87	GPM	MRB	DWS	BCL	PAS	REVISED EQUIP. CL PER DEAC PAID, REVISION DATED PIPING, REVISED LEGEND NOTE 4 PER ANSI B31.1-1977 SECTION 8.1.1.1. INCORP DCR 88-113 CA 1. FLEX HOSE & DESIGNATED V618, 630, 634, 725, 837, 724, 725, 726, 727, 728, 729, 730, 731, 732, 733, 734, 735, 736, 737, 738, 739, 740, 741, 742, 743, 744, 745, 746, 747, 748, 749, 750, 751, 752, 753, 754, 755, 756, 757, 758, 759, 760, 761, 762, 763, 764, 765, 766, 767, 768, 769, 770, 771, 772, 773, 774, 775, 776, 777, 778, 779, 780, 781, 782, 783, 784, 785, 786, 787, 788, 789, 790, 791, 792, 793, 794, 795, 796, 797, 798, 799, 800, 801, 802, 803, 804, 805, 806, 807, 808, 809, 810, 811, 812, 813, 814, 815, 816, 817, 818, 819, 820, 821, 822, 823, 824, 825, 826, 827, 828, 829, 830, 831, 832, 833, 834, 835, 836, 837, 838, 839, 840, 841, 842, 843, 844, 845, 846, 847, 848, 849, 850, 851, 852, 853, 854, 855, 856, 857, 858, 859, 860, 861, 862, 863, 864, 865, 866, 867, 868, 869, 870, 871, 872, 873, 874, 875, 876, 877, 878, 879, 880, 881, 882, 883, 884, 885, 886, 887, 888, 889, 890, 891, 892, 893, 894, 895, 896, 897, 898, 899, 900, 901, 902, 903, 904, 905, 906, 907, 908, 909, 910, 911, 912, 913, 914, 915, 916, 917, 918, 919, 920, 921, 922, 923, 924, 925, 926, 927, 928, 929, 930, 931, 932, 933, 934, 935, 936, 937, 938, 939, 940, 941, 942, 943, 944, 945, 946, 947, 948, 949, 950, 951, 952, 953, 954, 955, 956, 957, 958, 959, 960, 961, 962, 963, 964, 965, 966, 967, 968, 969, 970, 971, 972, 973, 974, 975, 976, 977, 978, 979, 980, 981, 982, 983, 984, 985, 986, 987, 988, 989, 990, 991, 992, 993, 994, 995, 996, 997, 998, 999, 1000
3	1/23/87	JDM	OPD	WRD	BCL	RRC	INCORP DCR 816, REVISED VALVE TYPE PER FP.
2	8/16/86	JDM	DWS	WRD	YMK	RRC	INCORP DCR 816, REVISED VALVE TYPE PER FP.
1	8/14/86	MPV	TAK	WRD	BCL	RRC	INCORP DCR 816, REVISED VALVE TYPE PER FP.
0	6/28/86	DWS	JEV	BCL	JMS	RRC	ISSUED FOR OPERATIONS

**North Atlantic Energy Service Corporation**

**CHEMICAL & VOLUME CONTROL SYS. LETDOWN DEGASIFIER DETAIL**

SEABROOK STATION  
PID- 1-CS-D20724

D-80