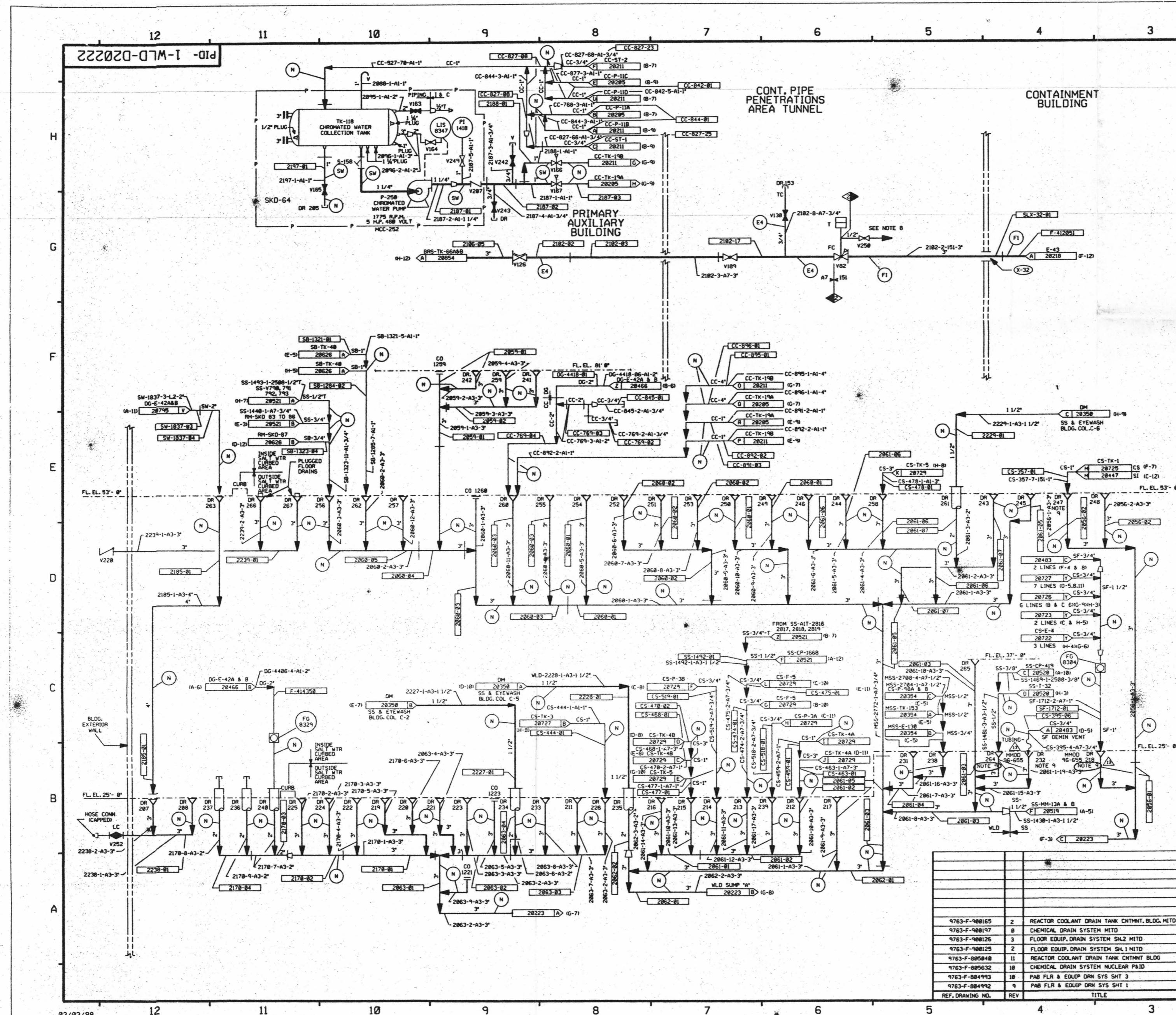


FOR INFORMATION ONLY



FOR PAID REFERENCE DRAWINGS, SYMBOLS AND ABBREVIATIONS REFER TO DRAWINGS PAID - LEGEND 1 AND PAID - LEGEND 2

LEGEND

DESIGN SYMBOL	TEST PRESSURE	MIN. TEST PRESSURE	TEST TEMP. °F	TEST MEDIUM
↑				TEST BOUNDARY
⊕	150 PSIG	225/245 PSIG	35	WATER
⊖	150 PSIG	187.5/199 PSIG	35	WATER
SW				STANDING WATER
⊘				NO TEST REQUIRED

NOTE: A. VENTS & DRAINS USMG CL. 2 & 3. NNS SHALL BE TESTED TO THE LAST ISOLATION VALVE.

DRAINS ON THIS DRAWING

287	214	230	243	253	263
288	228	234	244	254	264
212	221	235	245	255	265
212	222	236	246	256	266
213	223	237	247	257	267
214	224	238	248	258	268
215	225	239	249	259	269
216	226	240	250	260	270
217	231	241	251	261	271
218	232	242	252	262	272

CLEANOUTS ON THIS DRAWING

1221
1223
1259
1268

- NOTES:**
- WORK THIS DRAWING WITH DRAWINGS 28216, 28218 THRU 28221, & 28223 THRU 28224.
 - ALL LINES, EQUIPMENT, COMPONENTS, AND INSTRUMENTATION HAVE SYSTEM PREFIX UNLESS NOTED OTHERWISE.
 - ALL LINES, EQUIPMENT, COMPONENTS, AND INSTRUMENTATION ARE SAFETY CLASS NNS UNLESS NOTED OTHERWISE.
 - CLEANLINESS CLASS 'C' & 'D'.
 - DELETED.
 - △ INDICATES REVISION LEVEL.
 - SD NO. 15 IS SD-25.
 - REFER TO DRAWING VLT-28774 FOR VALVE LEAKOFF.
 - THIS DRAIN HAS A GAS CONTAINMENT DEVICE ADDED PER MHOD 96-655.

PORTIONS OF THIS DRAWING ARE NUCLEAR SAFETY RELATED

REV	DATE	DSGN	DRWN	CHKD	APPD	DESCRIPTION
1	2/3/95	MSP	TAK	VRD	BCL	RRC
8	6/26/96	GD	WMS	BCL	JMS	RRC
9	6/26/96	GD	WMS	BCL	JMS	RRC
10	6/26/96	GD	WMS	BCL	JMS	RRC
11	6/26/96	GD	WMS	BCL	JMS	RRC
12	6/26/96	GD	WMS	BCL	JMS	RRC
13	6/26/96	GD	WMS	BCL	JMS	RRC
14	6/26/96	GD	WMS	BCL	JMS	RRC
15	6/26/96	GD	WMS	BCL	JMS	RRC
16	6/26/96	GD	WMS	BCL	JMS	RRC
17	6/26/96	GD	WMS	BCL	JMS	RRC
18	6/26/96	GD	WMS	BCL	JMS	RRC
19	6/26/96	GD	WMS	BCL	JMS	RRC
20	6/26/96	GD	WMS	BCL	JMS	RRC
21	6/26/96	GD	WMS	BCL	JMS	RRC
22	6/26/96	GD	WMS	BCL	JMS	RRC
23	6/26/96	GD	WMS	BCL	JMS	RRC
24	6/26/96	GD	WMS	BCL	JMS	RRC
25	6/26/96	GD	WMS	BCL	JMS	RRC
26	6/26/96	GD	WMS	BCL	JMS	RRC
27	6/26/96	GD	WMS	BCL	JMS	RRC
28	6/26/96	GD	WMS	BCL	JMS	RRC
29	6/26/96	GD	WMS	BCL	JMS	RRC
30	6/26/96	GD	WMS	BCL	JMS	RRC
31	6/26/96	GD	WMS	BCL	JMS	RRC
32	6/26/96	GD	WMS	BCL	JMS	RRC
33	6/26/96	GD	WMS	BCL	JMS	RRC
34	6/26/96	GD	WMS	BCL	JMS	RRC
35	6/26/96	GD	WMS	BCL	JMS	RRC
36	6/26/96	GD	WMS	BCL	JMS	RRC
37	6/26/96	GD	WMS	BCL	JMS	RRC
38	6/26/96	GD	WMS	BCL	JMS	RRC
39	6/26/96	GD	WMS	BCL	JMS	RRC
40	6/26/96	GD	WMS	BCL	JMS	RRC
41	6/26/96	GD	WMS	BCL	JMS	RRC
42	6/26/96	GD	WMS	BCL	JMS	RRC
43	6/26/96	GD	WMS	BCL	JMS	RRC
44	6/26/96	GD	WMS	BCL	JMS	RRC
45	6/26/96	GD	WMS	BCL	JMS	RRC
46	6/26/96	GD	WMS	BCL	JMS	RRC
47	6/26/96	GD	WMS	BCL	JMS	RRC
48	6/26/96	GD	WMS	BCL	JMS	RRC
49	6/26/96	GD	WMS	BCL	JMS	RRC
50	6/26/96	GD	WMS	BCL	JMS	RRC

North Atlantic Energy Service Corporation

WASTE PROCESSING LIQUID DRAINS PRIMARY AUXILIARY BLDG. SH. 1 OF 2

PID- 1-WLD-D20222

D-79