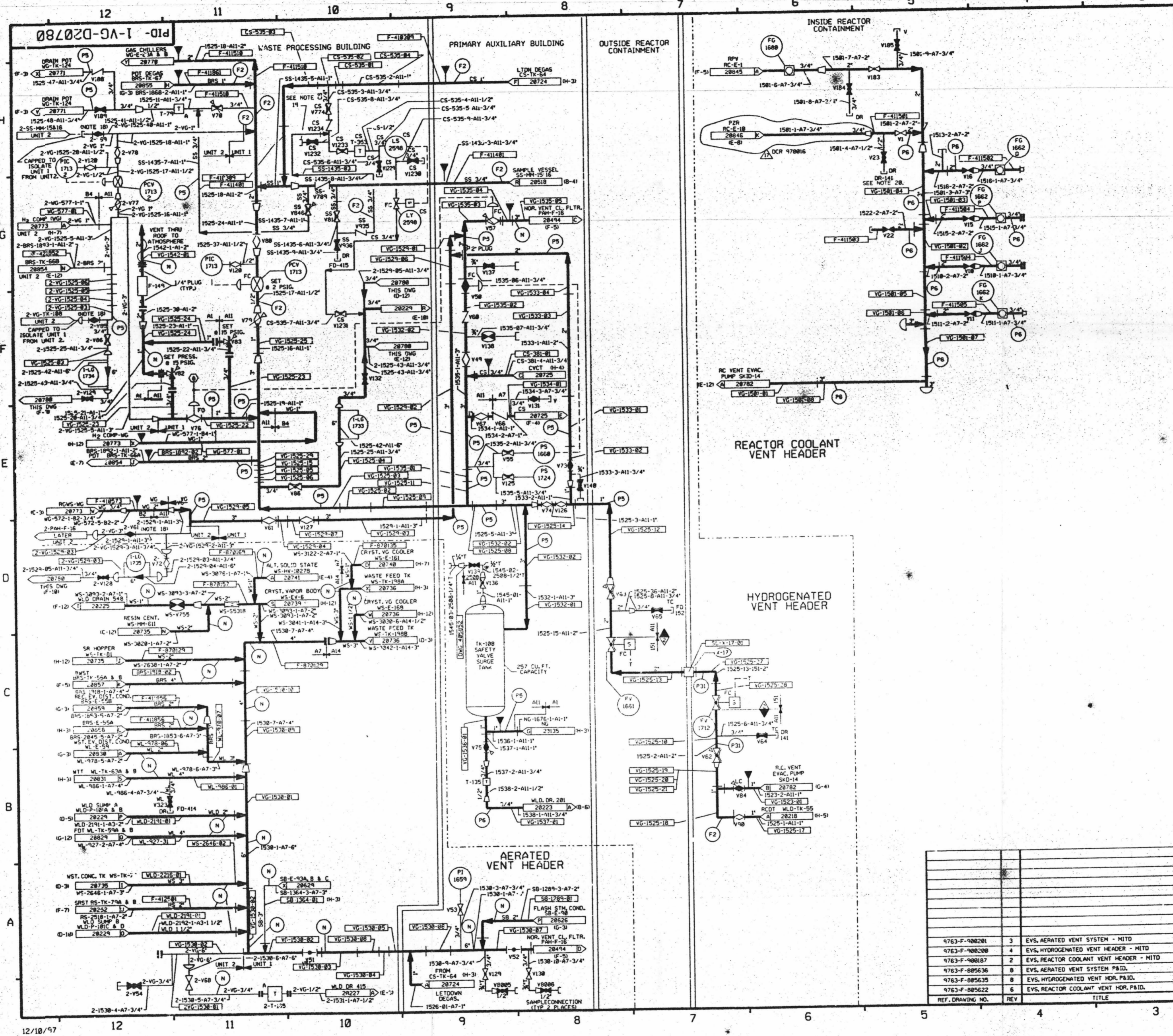


22
11
11
58
8.5
11
17
22



FOR P&ID REFERENCE DRAWINGS, SYMBOLS AND ABBREVIATIONS REFER TO DRAWINGS PAID - LEGEND 1 AND PAID - LEGEND 2

LEGEND

TEST BOUNDARY	DESIGN PRESSURE	TEST PRESSURE	HOLD TEST TEMP	TEST MEDIUM
IS	15 PSIG	18/22.5 PSIG	30	AIR/ H_2
IS	70 PSIG	87.5/95 PSIG	30	AIR/ H_2
IS	18 PSIG	15/18 PSIG	30	AIR/ H_2
IS	100 PSIG	150/170 PSIG	30	WATER

NOTES:
 1. WORK THIS DRAWING WITH DRAWING 28779 & 28782.
 2. DELETED
 3. ALL PIPING, VALVES, EQUIPMENT AND INSTRUMENTS HAVE SYSTEM P&ID UNLESS NOTED OTHERWISE.
 4. ALL LINES, EQUIPMENT, COMPONENTS AND INSTRUMENTS ARE SAFETY CLASS UNLESS NOTED OTHERWISE.
 5. DELETED
 6. DELETED
 7. DELETED
 8. CLEANLINESS CLASS 'B'
 9. DELETED
 10. DELETED
 11. DELETED
 12. (A) TO 2-3-VG-V57 UNIT 2-VG-V75 SHALL BE ADMINISTRATIVELY MAINTAINED OPEN BY ISOLATING THE AIR SUPPLY VALVE TO THE ACTUATOR DURING UNIT 2 CONSTRUCTION
 13. DELETED
 14. DELETED
 15. DELETED
 16. SYSTEM DESCRIPTION NUMBER IS SD-34
 17. Δ INDICATES REVISION LEVEL
 18. 2-3-VG-V61, 2-3-VG-V62 AND 2-3-VG-V65 SHOULD BE CLOSED AND LOCKED DURING CONSTRUCTION OF UNIT NO. 2.
 19. INSTALL THREADED CAP WHEN THESE CONN. IS NOT IN USE.
 20. QUICK DISCONNECTS MAY BE INSTALLED UPSTREAM OF PIPE TIPS AS DEEMED NECESSARY BY STATION STAFF TO FACILITATE VENT AND CLEAN OPERATIONS.

- PORTIONS OF THIS DRAWING ARE NUCLEAR SAFETY RELATED

REV	DATE	DSGN	DRWN	CRKD	CDE	SES	DESCRIPTION
17	12/27/77	MPW	DWS	JAC	RRC	INCORP. DCR 47816, DCM 4 & 4	
16	12/27/77	MPW	DWS	JAC	RRC	INCORP. MMR 11531, DCR 80	
15	12/14/77	MPW	DWS	JAC	RRC	PARTIAL INCORP. DCR 9716, C.B.	
14	12/14/77	MPW	DWS	JAC	RRC	INCORP. DCR 1277, C.B.	
13	12/14/77	MPW	DWS	JAC	RRC	INCORP. MMR 11531, DCM 4	
12	6/29/74	BCL	DWS	JAC	RRC	INCORP. DCR 14, 10, 11, 12, C.B.	
11	6/14/73	HRB	BCL	DWS	YMS	INCORP. DCR 14, 10, 11, 12, C.B.	
10	11/3/72	DWS	BCL	MPB	WFE	INCORP. DCR 43, 1, 2, 3, 4, 5, 6, 7, 8, 9, 10, 11, 12, 13, 14, 15, 16, 17, 18, 19, 20, 21, 22, 23, 24, 25, 26, 27, 28, 29, 30, 31, 32, 33, 34, 35, 36, 37, 38, 39, 40, 41, 42, 43, 44, 45, 46, 47, 48, 49, 50, 51, 52, 53, 54, 55, 56, 57, 58, 59, 60, 61, 62, 63, 64, 65, 66, 67, 68, 69, 70, 71, 72, 73, 74, 75, 76, 77, 78, 79, 80, 81, 82, 83, 84, 85, 86, 87, 88, 89, 90, 91, 92, 93, 94, 95, 96, 97, 98, 99, 100, 101, 102, 103, 104, 105, 106, 107, 108, 109, 110, 111, 112, 113, 114, 115, 116, 117, 118, 119, 120, 121, 122, 123, 124, 125, 126, 127, 128, 129, 130, 131, 132, 133, 134, 135, 136, 137, 138, 139, 140, 141, 142, 143, 144, 145, 146, 147, 148, 149, 150, 151, 152, 153, 154, 155, 156, 157, 158, 159, 160, 161, 162, 163, 164, 165, 166, 167, 168, 169, 170, 171, 172, 173, 174, 175, 176, 177, 178, 179, 180, 181, 182, 183, 184, 185, 186, 187, 188, 189, 190, 191, 192, 193, 194, 195, 196, 197, 198, 199, 200, 201, 202, 203, 204, 205, 206, 207, 208, 209, 210, 211, 212, 213, 214, 215, 216, 217, 218, 219, 220, 221, 222, 223, 224, 225, 226, 227, 228, 229, 230, 231, 232, 233, 234, 235, 236, 237, 238, 239, 240, 241, 242, 243, 244, 245, 246, 247, 248, 249, 250, 251, 252, 253, 254, 255, 256, 257, 258, 259, 260, 261, 262, 263, 264, 265, 266, 267, 268, 269, 270, 271, 272, 273, 274, 275, 276, 277, 278, 279, 280, 281, 282, 283, 284, 285, 286, 287, 288, 289, 290, 291, 292, 293, 294, 295, 296, 297, 298, 299, 300, 301, 302, 303, 304, 305, 306, 307, 308, 309, 310, 311, 312, 313, 314, 315, 316, 317, 318, 319, 320, 321, 322, 323, 324, 325, 326, 327, 328, 329, 330, 331, 332, 333, 334, 335, 336, 337, 338, 339, 340, 341, 342, 343, 344, 345, 346, 347, 348, 349, 350, 351, 352, 353, 354, 355, 356, 357, 358, 359, 360, 361, 362, 363, 364, 365, 366, 367, 368, 369, 370, 371, 372, 373, 374, 375, 376, 377, 378, 379, 380, 381, 382, 383, 384, 385, 386, 387, 388, 389, 390, 391, 392, 393, 394, 395, 396, 397, 398, 399, 400, 401, 402, 403, 404, 405, 406, 407, 408, 409, 410, 411, 412, 413, 414, 415, 416, 417, 418, 419, 420, 421, 422, 423, 424, 425, 426, 427, 428, 429, 430, 431, 432, 433, 434, 435, 436, 437, 438, 439, 440, 441, 442, 443, 444, 445, 446, 447, 448, 449, 450, 451, 452, 453, 454, 455, 456, 457, 458, 459, 460, 461, 462, 463, 464, 465, 466, 467, 468, 469, 470, 471, 472, 473, 474, 475, 476, 477, 478, 479, 480, 481, 482, 483, 484, 485, 486, 487, 488, 489, 490, 491, 492, 493, 494, 495, 496, 497, 498, 499, 500, 501, 502, 503, 504, 505, 506, 507, 508, 509, 510, 511, 512, 513, 514, 515, 516, 517, 518, 519, 520, 521, 522, 523, 524, 525, 526, 527, 528, 529, 530, 531, 532, 533, 534, 535, 536, 537, 538, 539, 540, 541, 542, 543, 544, 545, 546, 547, 548, 549, 550, 551, 552, 553, 554, 555, 556, 557, 558, 559, 560, 561, 562, 563, 564, 565, 566, 567, 568, 569, 570, 571, 572, 573, 574, 575, 576, 577, 578, 579, 580, 581, 582, 583, 584, 585, 586, 587, 588, 589, 590, 591, 592, 593, 594, 595, 596, 597, 598, 599, 600, 601, 602, 603, 604, 605, 606, 607, 608, 609, 610, 611, 612, 613, 614, 615, 616, 617, 618, 619, 620, 621, 622, 623, 624, 625, 626, 627, 628, 629, 630, 631, 632, 633, 634, 635, 636, 637, 638, 639, 640, 641, 642, 643, 644, 645, 646, 647, 648, 649, 650, 651, 652, 653, 654, 655, 656, 657, 658, 659, 660, 661, 662, 663, 664, 665, 666, 667, 668, 669, 670, 671, 672, 673, 674, 675, 676, 677, 678, 679, 680, 681, 682, 683, 684, 685, 686, 687, 688, 689, 690, 691, 692, 693, 694, 695, 696, 697, 698, 699, 700, 701, 702, 703, 704, 705, 706, 707, 708, 709, 710, 711, 712, 713, 714, 715, 716, 717, 718, 719, 720, 721, 722, 723, 724, 725, 726, 727, 728, 729, 730, 731, 732, 733, 734, 735, 736, 737, 738, 739, 740, 741, 742, 743, 744, 745, 746, 747, 748, 749, 750, 751, 752, 753, 754, 755, 756, 757, 758, 759, 760, 761, 762, 763, 764, 765, 766, 767, 768, 769, 770, 771, 772, 773, 774, 775, 776, 777, 778, 779, 780, 781, 782, 783, 784, 785, 786, 787, 788, 789, 790, 791, 792, 793, 794, 795, 796, 797, 798, 799, 800, 801, 802, 803, 804, 805, 806, 807, 808, 809, 810, 811, 812, 813, 814, 815, 816, 817, 818, 819, 820, 821, 822, 823, 824, 825, 826, 827, 828, 829, 830, 831, 832, 833, 834, 835, 836, 837, 838, 839, 840, 841, 842, 843, 844, 845, 846, 847, 848, 849, 850, 851, 852, 853, 854, 855, 856, 857, 858, 859, 860, 861, 862, 863, 864, 865, 866, 867, 868, 869, 870, 871, 872, 873, 874, 875, 876, 877, 878, 879, 880, 881, 882, 883, 884, 885, 886, 887, 888, 889, 890, 891, 892, 893, 894, 895, 896, 897, 898, 899, 900, 901, 902, 903, 904, 905, 906, 907, 908, 909, 910, 911, 912, 913, 914, 915, 916, 917, 918, 919, 920, 921, 922, 923, 924, 925, 926, 927, 928, 929, 930, 931, 932, 933, 934, 935, 936, 937, 938, 939, 940, 941, 942, 943, 944, 945, 946, 947, 948, 949, 950, 951, 952, 953, 954, 955, 956, 957, 958, 959, 960, 961, 962, 963, 964, 965, 966, 967, 968, 969, 970, 971, 972, 973, 974, 975, 976, 977, 978, 979, 980, 981, 982, 983, 984, 985, 986, 987, 988, 989, 990, 991, 992, 993, 994, 995, 996, 997, 998, 999, 1000	

North Atlantic Energy Service Corporation

VENT GAS SYSTEM

PID- 1-VG-D20780

SEABROOK STATION

REV	DATE	DSGN	DRWN	CRKD	CDE	SES	DESCRIPTION
3	9/23/86	MAP	DWS	VRO	BCL	RRC	EVS, AERATED VENT SYSTEM - MITD
2	6/25/86	DWS	VRO	JMCS	RRC	RRC	EVS, HYDROGENATED VENT HEADER - MITD
1	12/3/86	MAP	DWS	VRO	BCL	RRC	EVS, REACTOR COOLANT VENT HEADER - MITD
8	6/25/86	DWS	VRO	JMCS	RRC	RRC	EVS, AERATED VENT SYSTEM PAID
6	6/25/86	DWS	VRO	JMCS	RRC	RRC	EVS, HYDROGENATED VENT HDR. PAID
5	6/25/86	DWS	VRO	JMCS	RRC	RRC	EVS, REACTOR COOLANT VENT HDR. PAID

D-74