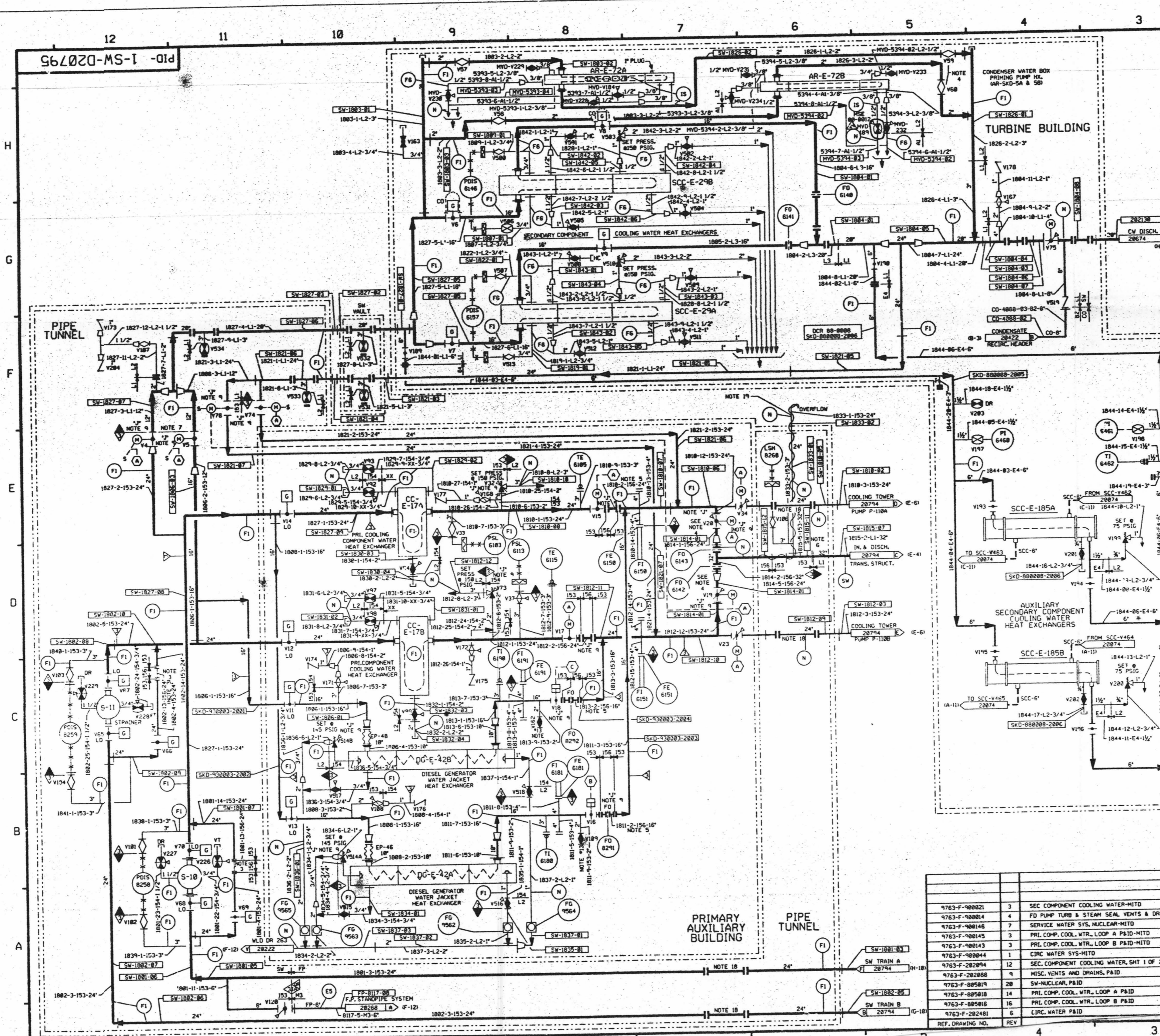


FOR INFORMATION ONLY



FOR PAID REFERENCE DRAWINGS, SYMBOLS AND ABBREVIATIONS REFER TO DRAWINGS PAID-LEGEND 1 AND PAID-LEGEND 2

LEGEND				
TEST	DESIGN PRESSURE	TEST PRESSURE	MIN. TEST TEMP. F	TEST MEDIUM
ES	150 PSIG	200/228 PSIG	35	WATER
F1	150 PSIG	187.5/194 PSIG	35	WATER
FA	150 PSIG	150/165 PSIG	35	DRY WATER
IS				NO P
IS				STANDING WATER
N				(SEE NOTE 8)

NOTES: A. VENTS AND DRAINS WITH CAPS/BLIND FLANGES ETC. SHOULD BE TESTED TO THE LAST ISOLATION VALVE.  
B. NO TEST REQUIRED PER CODE CASE N-248 FOR ASME PIPING.

- NOTES:
- WORK THIS DRAWING WITH DRAWINGS 28792 & 28794.
  - ALL PIPING, VALVES, EQUIPMENT, & INSTRUMENTS HAVE SYSTEM PREFIX "SW" UNLESS NOTED OTHERWISE.
  - SPONGE PIECE NECESSARY FOR ADDITIONAL SERVICE WATER STRAINER AT LATER DATE IF REQUIRED.
  - VALVES 1-54H-110, 20, 99 AND V58 ARE PRESET. THESE ARE THE ONLY VALVES TO BE USED FOR FLOW BALANCING WHEN REQUIRED.
  - A FLANGE SPECIFIED WITH 5 PIPE DIA. LENGTH IS LOCATED ON THE OUTLET SIDE OF EACH THROTTLING VALVE, 4" OR LARGER.
  - CLASS BREAK OCCURS WHERE PIPE ENTERS EARTH.
  - VALVES V4 & V5 TO CLOSE ON COMPLETE LOSS OF OFF SITE POWER.
  - 3X - DENOTES TITANIUM MATERIAL.
  - THE IDENTIFICATION "J" NEAR A VALVE DENOTES THAT VALVE IS DESIGNATED FOR INSERVICE TESTING.
  - CLEARLINESS CODE FOR SW IS "C".
  - DELETED
  - UNIT NO. 2 S.W. SYSTEM IDENTICAL TO S.W. SYSTEM FOR UNIT NO. 1 SHOWN.
  - HIGH POINT VENTS TO BE LOCATED AT PIPING HIGH POINTS.
  - INDICATES REVISION LEVEL
  - SYSTEM DESCRIPTION NUMBER IS SW-24
  - INSTRUMENTATION REFERENCES
  - IA LOGIC
  - OPEN CMD FROM DG-1A
  - OPEN CMD FROM DG-1B
  - VENTS, DRAINS AND TEST CONNECTION CODE BREAKS ARE AT THE DOWNSTREAM END OF THE OUTER ISOLATION VALVE PER 1-WHY-BOSILL UNLESS NOTED OTHERWISE.
  - THE CEMENT LINER IN THE SPOOL HAS BEEN REMOVED AND BELZONA HAS BEEN APPLIED.
  - HEAT TRACING HAS BEEN DISCONNECTED AND IS NON-FUNCTIONAL.

PORTIONS OF THIS DRAWING ARE NUCLEAR SAFETY RELATED

REV	DATE	BY	CHKD	APP'D	DESCRIPTION
29	1/18/00	BCS		DEA	INCOMP. MSE 88-812 R.V. 08
28	8/28/99	MPW		DMS	INCOMP. MSE 99-303 REV. 08
27	4/29/99	DMS		BCS	INCOMP. DCR 980807 DCM#8
26	7/12/99	BCS		MPW	INCOMP. DCR 980807 DCM#8 PARTIAL
25	4/30/99	DMS		RWS	INCOMP. DCR 980807 DCM#8
24	2/27/99	BCS		MPW	INCOMP. DCR 980807 DCM#8
23	2/3/98	BCS		MPW	INCOMP. DCR 97-11 DCM#8, HMOO 97-508 DCM#8
22	8/18/97	MPW		BCS	INCOMP. HMOO 96-508 DCM#8
21	6/18/97	DMS		MPW	INCOMP. DCR 960812 DCM#8 & DCM 960812 DCM#8 & HMOO 96-508 DCM#8
20	5/28/97	DMS		MPW	PARTIAL INCOMP. DCR 960812 DCM#8 & 1
19	8/17/95	BCL		DMS	INCOMP. HMOO 92-542 CA-B
18	8/17/95	BCL		DMS	INCOMP. HMOO 94-578 CA-B
17	6/12/95	BCL		DMS	INCOMP. HMOO 92-518 CA-B
16	5/4/95	BCL		MPW	INCOMP. HMOO 92-518 CA-A
15	4/14/95	BCL		MPW	INCOMP. HMOO 92-518 CA-A

**North Atlantic Energy Service Corporation**

**SERVICE WATER SYSTEM NUCLEAR DETAIL**

PID-1-SW-020795

REF. DRAWING NO.	REV	DESCRIPTION
4763-F-980821	3	SEC COMPONENT COOLING WATER-MITD
4763-F-980814	4	FD PUMP TURB & STEAM SEAL VENTS & DRN'S-MITD
4763-F-980146	7	SERVICE WATER SYS. NUCLEAR-MITD
4763-F-980145	3	PRI. COMP. COOL. WTR. LOOP A PAID-MITD
4763-F-980143	3	PRI. COMP. COOL. WTR. LOOP B PAID-MITD
4763-F-980844	1	CIRC. WATER SYS-MITD
4763-F-282894	12	SEC. COMPONENT COOLING WATER, SHIT 1 OF 2
4763-F-282898	9	MISC. VENTS AND DRAINS, PAID
4763-F-895819	28	SW-NUCLEAR, PAID
4763-F-895818	14	PRI. COMP. COOL. WTR. LOOP A PAID
4763-F-895816	16	PRI. COMP. COOL. WTR. LOOP B PAID
4763-F-282481	6	CIRC. WATER PAID

D-72