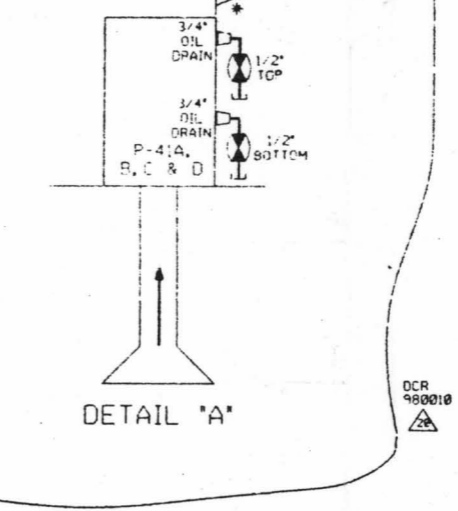


EQUIP. NO	VALVE NO	INSTR. NO	VALVE NO
1-SW-FN-51B	1-SW-V231	1-SW-LG-6116B	1-SW-V232
2-SW-FN-51B	2-SW-V231	2-SW-LG-6116B	2-SW-V232

EQUIP. NO	VALVE NO	INSTR. NO
1-SW-FN-51A	1-SW-V230	1-SW-LG-6116A
2-SW-FN-51A	2-SW-V230	2-SW-LG-6116A

PUMP NO.	TOP DRAIN	BOTTOM DRAIN
P-21A	1-515	1-516
P-41B	1824-7-159-1/2"	1824-8-159-1/2"
P-41C	1824-9-159-1/2"	1824-10-159-1/2"
P-41D	1824-11-159-1/2"	1824-12-159-1/2"



FOR PAID REFERENCE DRAWINGS, SYMBOLS AND ABBREVIATIONS REFER TO DRAWINGS PAID - LEGEND 1 AND PAID - LEGEND 2

LEGEND				
TEST BOUNDARY	DESIGN PRESSURE	TEST PRESSURE	MIN. TEST TEMP. F.	TEST MEDIUM
Y				
YB				
(FI)	INTEGRITY TEST	150 PSIG	187.5/199 PSIG	35 WATER
(IS)	INITIAL SERVICE TEST		N.O.P.	
(SW)	STANDING WATER			
(N)	NO TEST REQUIRED			(SEE NOTE B)

NOTES:

- WORK THIS DRAWING WITH DRAWINGS 28792 THRU 28796.
- ALL PIPING, VALVES, EQUIPMENT & INSTRUMENTS HAVE SYSTEM PREFIX 'SW', AND 'L' FOR UNIT-1, UNLESS NOTED OTHERWISE.
- VALVES 1-SW-V27 AND V36 ARE PRESET. THESE ARE THE ONLY VALVES TO BE USED FOR FLOW BALANCING WHEN REQUIRED.
- A FLANGED SPOOL PIECE MIN. 5 PIPE DIA. LONG WILL BE LOCATED ON THE OUTLET SIDE OF EACH THROTTLING VALVE, 4" & LARGER.
- PLATE WELDED TO PIPE TO MAINTAIN CLEANLINESS AND FOREIGN MATERIAL EXCLUSION.
- UNIT NO.2 S.W. SYSTEM IDENTICAL TO S.W. SYSTEM FOR UNIT NO.1 SHOWN.
- 1-FN-51B, 2-FN-51B ARE POWERED AND CONTROLLED FROM EITHER 14115 1 OR 2.
- HIGH POINT VENTS TO BE LOCATED AT PIPING HIGH POINTS.
- 2" BOND FLANGES TO BE PROVIDED BY VENDOR FOR USE DURING HYDROTESTING UNDERGROUND PIPING LINES 1818 OR 1812.
- FRITABLE FLANGE-BLIND SIDE TO BE INSTALLED DURING UNIT 2 CONSTRUCTION ONLY THROUGH FLOW SIDE TO BE INSTALLED UPON COMPLETION OF PIPING TO VALVE 2-SW-V24-V27.
- FUTURE UNIT 2 LINES SHOWN DOTTED. FUTURE UNIT 2 2-24-HOV TO REPLACE BLIND FLANGES AS REQUIRED.
- INSTALL SPARE VALVES 1-24-SW-V28 AND 1-24-SW-V29 IN PLACE OF 1-24-SW-V28 AND 1-24-SW-V29 OPERATOR TO BE FROM M.C.A.
- VALVES 1-24-SW-V26 AND 1-24-SW-V25 SHALL BE CLOSED AND ADMINISTRATIVELY MAINTAINED CLOSED. (MCA 08/13/25)
- FIELD WELDS ON SPOOL, 2-2964-725 (1-SW-1815-3-11-30)-22 BURIED UNDER CHARACTERIZATION BUILDING. A PARTICULATE PARTICLE EXAMINATION WILL BE PERFORMED IN LIEU OF THE HYDROSTATIC TEST. NONDESTRUCTIVE EXAMINATION (NDE) SHALL BE INCLUDED ON EACH WELD PASS. HYDROTEST FOR ALL SWP WELDS HAS BEEN PERFORMED BY THE VENDOR. SYSTEM HYDRO TO BE PERFORMED AT A LATER DATE.
- DELETED
- DELETED
- SERVICE WATER CLEANLINESS CLASS IS 'D'. POTABLE WATER CLEANLINESS CLASS IS 'C'.
- DELETED
- ALL MECHANICAL JOINTS FROM ALL PUMP DISCHARGE NOZZLES TO FIRST ISOLATION VALVE WILL BE GIVEN IN SERVICE TEST.
- SD NO. 10.24
- VALVES ARE QUALIFIED IN ACCORDANCE WITH PROVISIONS OF ASME III DIV.5 SUBSECTION NC-3649 ASME BOILER & PRESSUR. VESSEL CODE.
- INDICATES REVISION LEVEL
- VENTS, DRAINS AND TEST CONNECTION CODE BREAKS ARE AT THE DOWNSTREAM END OF THE OUTER ISOLATION VALVE PER 1-NHY-B0511 UNLESS NOTED OTHERWISE.
- 1 1/2" DIA. 4" BLIND FLANGE BORED TO SUIT
- POLY LINER HAS BEEN REMOVED AND BELTLOK APPLIED.
- INSTRUMENTATION REFERENCES:
- TA LOGIC
- THE CEMENT LINER IN THE SPOOL HAS BEEN REMOVED AND GEOTONA HAS BEEN APPLIED.

PORTIONS OF THIS DRAWING ARE NUCLEAR SAFETY RELATED

REV	DATE	DSGN	DRWN	CHKD	CODE	SES	DESCRIPTION
28	7/11/91	DWS					PARTIAL INCORP. DCR 98-018 DCR-028
17	3/28/90	BCL					INCORP. DCR 98-018 CA-02
16	8/6/89	DRL					INCORP. M-100 97-511 DCR 000
15	6/18/89	DWS					INCORP. DCR 98-012 CA-04
14	11/27/89	BCL					INCORP. DCR 98-12 CA-04
13	8/14/89	BCL					INCORP. M-100 97-511 DCR 000
12	6/12/89	BCL					INCORP. M-100 94-578 CA-08
11	7/21/84	BCL					INCORP. DCR 98-003 CA-08
10	5/4/84	BCL					INCORP. M-100 93-582 CA-01
9	4/11/84	BCL					INCORP. M-100 93-517 CA-01 & DELETE FLANGES. SEE PER 98-0533
8	8/6/82	BCL					INCORP. M-100 91-515 CA-08
7	4/28/82	HRB					INCORP. M-100 91-515 CA-08
6	12/23/81	RMC					INCORP. DCR 98-42, CA32
5	9/11/81	HRB	JM	FCB	GPM	JEV	INCORPORATED DCR 89-81 CA-08 REVISED DWS NOS. & NOTE 26 JELI TED. 150 DWS NOS. 5 AND BOUNDARIES INCORPORATED DCR 98-042 CA-01 & BOUNDARIES REVISED SPEC DRAWS REVISED LINE NUMBERS
4	8/18/80	GPM	RMC	HRB	PAL	RRC	REVISED LINE SIZE PER UE & C P & ID 8087 ADDED VENT & DR DESIGNATION PER E & C DWS 280363 & 282294. NOTE 24 PER UE & C 80-80810 DELETED NOTE 18 & J DESIGNATION

North Atlantic Energy Service Corporation

07/88/99

0763-F-980146 7 SERVICE WATER SYS. NUCLEAR MITD  
0763-F-980158 5 SERVICE WATER SYS. NUCLEAR MITD  
0763-F-258333 18 SW-NUCLEAR, PAID.  
0763-F-805819 28 SW-NUCLEAR, PAID.

REF. DRAWING NO. REV. TITLE

SEABROOK STATION

PID- 1-SW-D20794

D-21