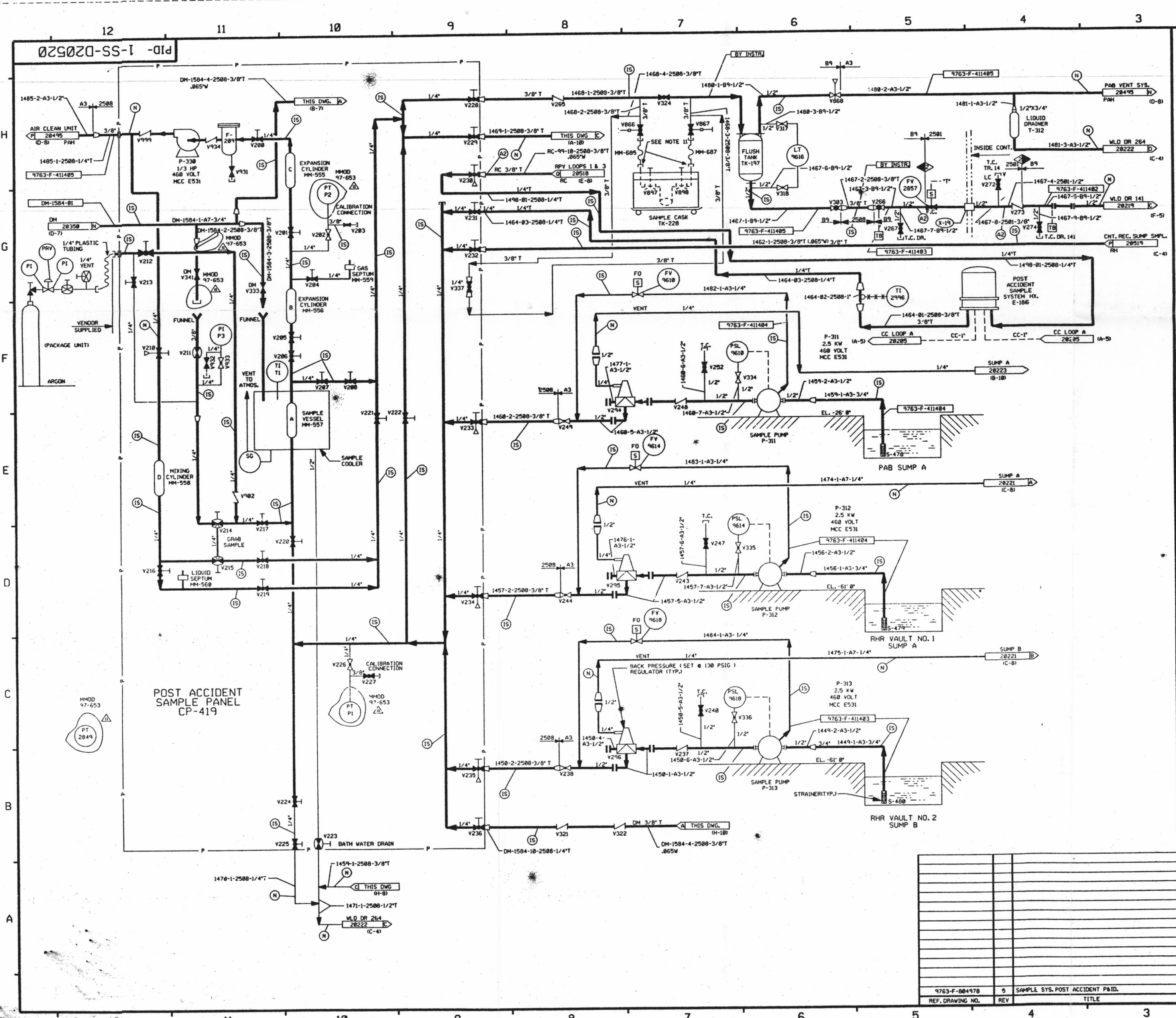


FOR INFORMATION ONLY



FOR PAID REFERENCE DRAWINGS, SYMBOLS AND ABBREVIATIONS REFER TO DRAWINGS PAID - LEGEND 1 AND PAID - LEGEND 2

TEST	DESIGN PRESSURE	TEST PRESSURE	MIN. TEST TEMP	TEST MEDIUM
TEST BOUNDARY				
TEMPORARY TEST BOUNDARY				
INTEGRITY TEST	2495 PSIG	3186/3242 PSIG	35	WATER
INITIAL SERVICE			N.O.P.	
NO TEST REQUIRED				

NOTE:
 A. VENTS & DRAINS WITH CAPS/BLIND FLANGES ETC. (ASME CLASS 2 & 3, NMS 1) SHALL BE TESTED TO THE LAST ISOLATION VALVE.

- NOTES:
1. WORK THIS DRAWING WITH DRAWINGS 29516, 29518, 29519, 29521 AND 29522.
 2. ALL PIPING, VALVES, EQUIPMENT, AND INSTRUMENTS HAVE SYSTEM PREFIX SS, UNLESS NOTED OTHERWISE.
 3. CLEANLINESS CLASS IS "B".
 4. ALL TUBING PER SPEC 2508 TO BE .049 WALL EXCEPT AS NOTED.
 5. DELETED.
 6. SYSTEM DESCRIPTION NUMBER IS SD-38.
 7. VENT AND DRAIN CODE BREAKS ARE AT THE DOWNSTREAM END OF THE OUTER ISOLATION VALVE PER 1-NY-89511, UNLESS NOTED OTHERWISE.
 8. Δ INDICATES REVISION LEVEL.
 9. MAINTAIN LEVEL OF DEMIN. WATER IN REFERENCE LEG.
 10. ALL LINES, EQUIPMENT, COMPONENTS AND INSTRUMENTS ARE SAFETY CLASS NMS, UNLESS NOTED OTHERWISE.
 11. QUICK DISCONNECT COUPLINGS.

PORTIONS OF THIS DRAWING ARE
NUCLEAR SAFETY RELATED

REV	DATE	DSGN	DRWN	CHKD	CODE	SES	DESCRIPTION
11	8/2/95	BCL	DWS	MPW	RFB	JMV	INCORP. MHOD 97-653 DCN-88
10	4/28/92	HRB	DWS	MPW	RFB	JMV	INCORP. MHOD 94-565 CAB
9	4/28/92	HRB	DWS	MPW	RFB	JMV	INCORP. MHOD'S 91-515 CAB & 91-511 CAB
8	3/2/91	GPM	FCB	JM	RRC	JMV	INCORP. MHOD 98-99 CAB
7	10/29/88	HRB	FCB	JM	APL	BCL	INCORP. MHOD 98-981 CAB DELETED NOTE 5 & 17 SYMBOLS
6	11/27/89	CCM	RHC	APL	HRB	WFD	INCORPORATED MHOD 89-615 CAB
5	4/22/89	GPM	RHC	KRB	PAL	GRM	INCORPORATED DCR 88-81 CAB2
4	2/17/89	GPM	JM	HRB	APL	DJM	INCORP. DCR 88-51 REV 1 REVISION SUMP BLDG. VENT LINES SHOWN GOING TO SUMP DETAIL PER CHEMISTRY REQUEST. LEGEND NOTE A & NOTES 10, 7, DELETED CLASS BOUNDARY ADDED NOTE 10 & 11
3	11/4/87	MPW	JM	DWS	CH	WFD	INCORP. DCR 87-344, REVISED LEGEND NOTE PER 9763-F-1000000 AND ANSI B31.1 1977-SEC. 137.1.2C
2	8/6/87	MPW	HRB	DWS	BCL	RRC	ADDED NOTES 6 & 9, INCORP. DCR 87-114 CA 87
1	12/17/86	JDM	TAK	PAL	BCL	RRC	ADDED LINE 688 PER DWS REVIEW ADDED LINE 100 PER DWS REVIEW ADDED LINE 101 PER DWS REVIEW ADDED LINE 102 PER DWS REVIEW ADDED LINE 103 PER DWS REVIEW ADDED LINE 104 PER DWS REVIEW ADDED LINE 105 PER DWS REVIEW ADDED LINE 106 PER DWS REVIEW ADDED LINE 107 PER DWS REVIEW ADDED LINE 108 PER DWS REVIEW ADDED LINE 109 PER DWS REVIEW ADDED LINE 110 PER DWS REVIEW ADDED LINE 111 PER DWS REVIEW ADDED LINE 112 PER DWS REVIEW ADDED LINE 113 PER DWS REVIEW ADDED LINE 114 PER DWS REVIEW ADDED LINE 115 PER DWS REVIEW ADDED LINE 116 PER DWS REVIEW ADDED LINE 117 PER DWS REVIEW ADDED LINE 118 PER DWS REVIEW ADDED LINE 119 PER DWS REVIEW ADDED LINE 120 PER DWS REVIEW
0	7/31/86	DWS	OPD	DWS	JHS	RRC	ISSUED FOR OPERATIONS

North Atlantic Energy Service Corporation

SAMPLE SYSTEM (NUCLEAR-POST ACCIDENT) DETAIL

7973-F-88478 5 SAMP. SYS. POST ACCIDENT PAID.
 REF. DRAWING NO. REV TITLE

SEABROOK STATION PID- 1-SS-D20520

D-70