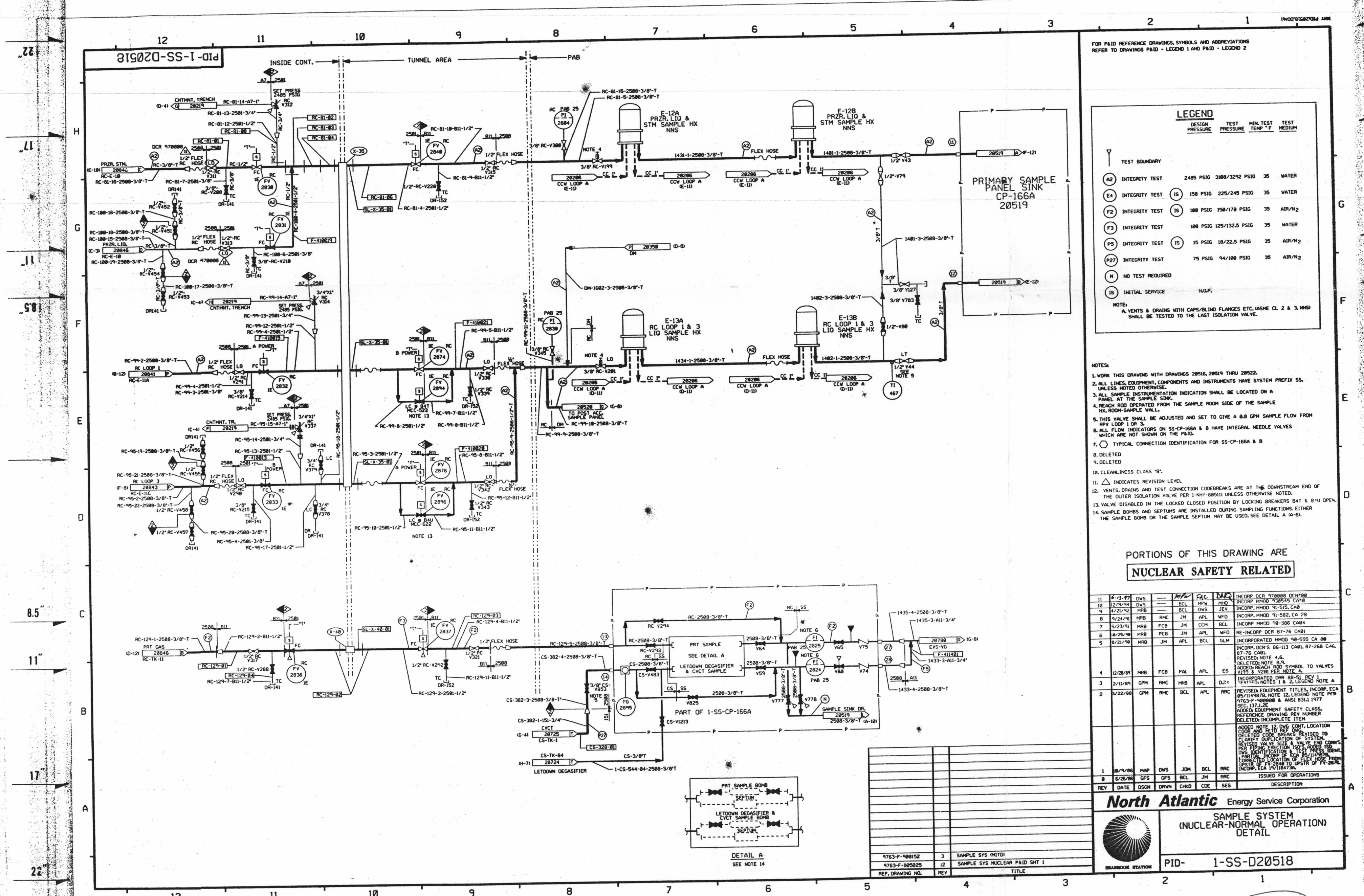


FOR INFORMATION ONLY



FOR PAID REFERENCE DRAWINGS, SYMBOLS AND ABBREVIATIONS REFER TO DRAWINGS PAID - LEGEND 1 AND PAID - LEGEND 2

LEGEND					
DESIGN	TEST	MIN. TEST	TEST		
PRESSURE	PRESSURE	TEMP °F	MEDIUM		
TEST BOUNDARY					
(A2)	INTEGRITY TEST	2485 PSIG	3189/3292 PSIG	35	WATER
(E4)	INTEGRITY TEST	150 PSIG	225/245 PSIG	35	WATER
(F2)	INTEGRITY TEST	100 PSIG	158/178 PSIG	35	AIR/H <sub>2</sub> O
(F3)	INTEGRITY TEST	100 PSIG	125/132.5 PSIG	35	WATER
(P5)	INTEGRITY TEST	15 PSIG	18/22.5 PSIG	35	AIR/H <sub>2</sub> O
(P27)	INTEGRITY TEST	75 PSIG	94/108 PSIG	35	AIR/H <sub>2</sub> O
(N)	NO TEST REQUIRED				
(IS)	INITIAL SERVICE H.O.P.				

NOTE:  
 A. VENTS & DRAINS WITH CAPS/BLIND FLANGES ETC. (ASME CL 2 & 3, NPS) SHALL BE TESTED TO THE LAST ISOLATION VALVE.

- NOTES:
- WORK THIS DRAWING WITH DRAWINGS 20516, 20519 THRU 20522.
  - ALL LINES, EQUIPMENT, COMPONENTS AND INSTRUMENTS HAVE SYSTEM PREFIX SS, UNLESS NOTED OTHERWISE.
  - ALL SAMPLE INSTRUMENTATION INDICATION SHALL BE LOCATED ON A PANEL AT THE SAMPLE SINK.
  - REACH ROD OPERATED FROM THE SAMPLE ROOM SIDE OF THE SAMPLE HX, ROOM-SAMPLE WALL.
  - THIS VALVE SHALL BE ADJUSTED AND SET TO GIVE A 8.0 GPM SAMPLE FLOW FROM SERV LOOP 1 OR 3.
  - ALL FLOW INDICATORS ON SS-CP-166A & B HAVE INTEGRAL NEEDLE VALVES WHICH ARE NOT SHOWN ON THE PAID.
  - TYPICAL CONNECTION IDENTIFICATION FOR SS-CP-166A & B
  - DELETED
  - DELETED
  - CLEANLINESS CLASS 'B'
  - △ INDICATES REVISION LEVEL
  - VENTS, DRAINS AND TEST CONNECTION CODEBREAKERS ARE AT THE DOWNSTREAM END OF THE OUTER ISOLATION VALVE PER 1-HWY-88511 UNLESS OTHERWISE NOTED.
  - VALVE DISABLED IN THE CLOSED POSITION BY LOCKING BREAKERS B4 & B14 OPEN.
  - SAMPLE BOMBS AND SEPTUMS ARE INSTALLED DURING SAMPLING FUNCTIONS, EITHER THE SAMPLE BOMB OR THE SAMPLE SEPTUM MAY BE USED, SEE DETAIL A (A-18).

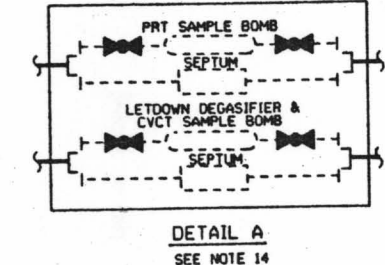
PORTIONS OF THIS DRAWING ARE  
**NUCLEAR SAFETY RELATED**

REV	DATE	BY	CHKD	APP	DESCRIPTION
1	6/21/77	DWS	JM	BCL	ISSUED FOR OPERATIONS
2	2/22/88	GPH	RMC	BCL	ISSUED FOR OPERATIONS
3	2/11/89	GPH	RMC	HMB	ISSUED FOR OPERATIONS
4	2/28/89	HRB	FCB	PAL	ISSUED FOR OPERATIONS
5	8/25/90	HRB	PCB	JM	ISSUED FOR OPERATIONS
6	10/25/90	HRB	PCB	JM	ISSUED FOR OPERATIONS
7	5/23/91	HRB	FCB	JM	ISSUED FOR OPERATIONS
8	4/24/91	HRB	RMC	JM	ISSUED FOR OPERATIONS
9	12/21/92	HRB	BCL	JM	ISSUED FOR OPERATIONS
10	12/21/94	DWS	BCL	JM	ISSUED FOR OPERATIONS
11	6/21/97	DWS	BCL	JM	ISSUED FOR OPERATIONS

**North Atlantic Energy Service Corporation**

SAMPLE SYSTEM  
 (NUCLEAR-NORMAL OPERATION)  
 DETAIL

PID- 1-SS-D20518



D-69