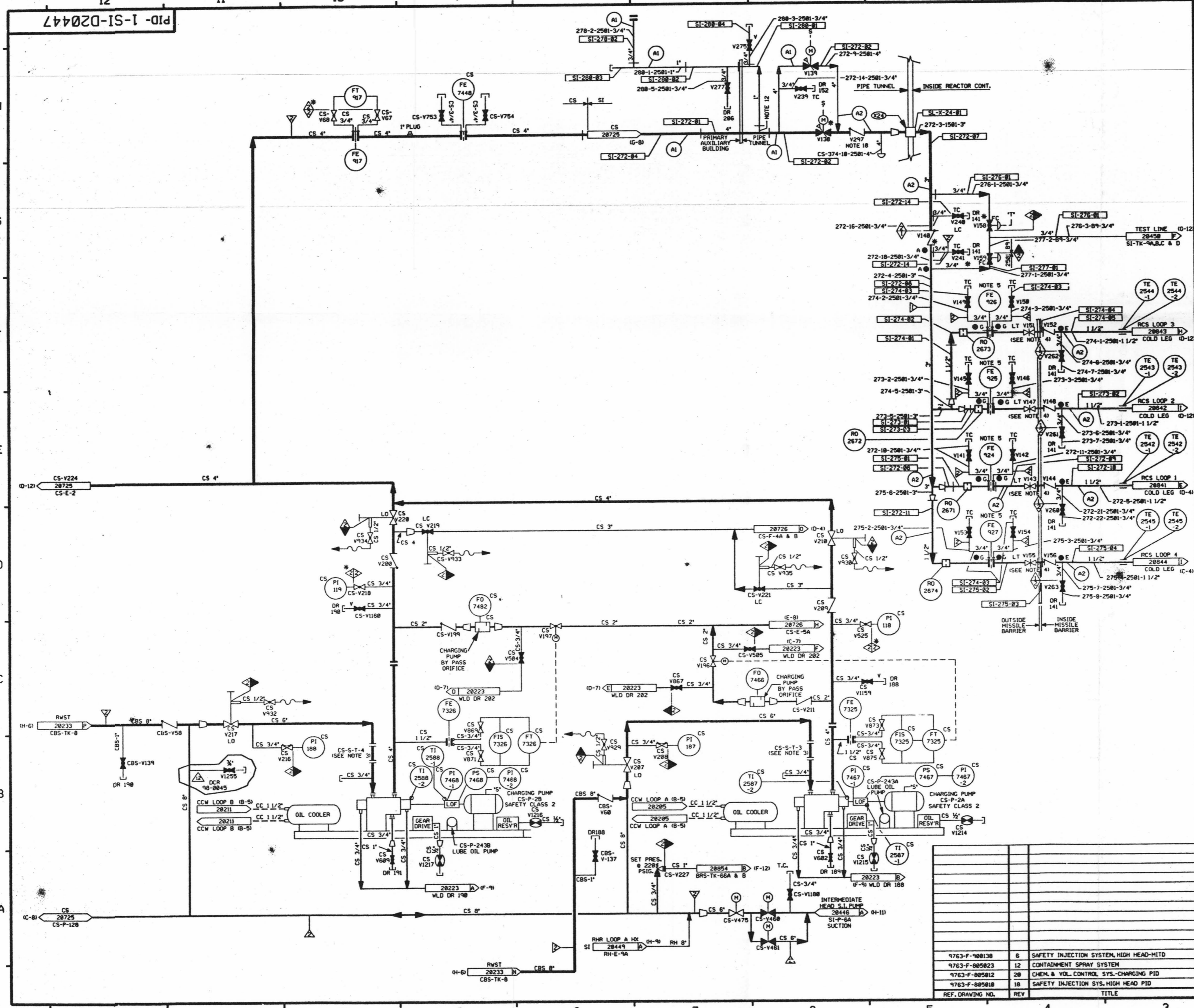


FOR INFORMATION ONLY



FOR PAID REFERENCE DRAWINGS, SYMBOLS, AND ABBREVIATIONS REFER TO DRAWINGS PAID-LEGEND 1 AND PAID-LEGEND 2.

LEGEND

DESIGN SYMBOL	TEST PRESSURE	TEST MEDIUM	MIN. TEST TEMP.
Y	2735 PSIG 3419/3824 PSIG	35 WATER	
YB	2485 PSIG 3186/3292 PSIG	35 WATER	

NOTE:
A. VENTS & DRAINS WITH CAPS/BLIND FLANGES ETC. GASHC CL. 2 & 3 SHALL BE TESTED TO THE LAST ISOLATION VALVE.

- NOTES:
1. WORK THIS DRAWING WITH DRAWINGS 28445 THRU 28456. PORTIONS OF THE CS SYSTEM DUPLICATED ON THIS DRAWING ARE DETAILED ON CS-28728 DUE TO DUAL SYSTEM FUNCTIONS.
 2. ALL PIPES, VALVES, EQUIPMENT, COMPONENTS AND INSTRUMENTS HAVE SYSTEM PREFIX UNLESS NOTED OTHERWISE.
 3. DELETED.
 4. ADJUST VALVES IN FIELD TO LIMIT PUMP RUN OUT, THEN LOCK.
 5. FLOWMETER FLUID TO VERIFY FLOW DURING PROPERATION TEST.
 6. VENT AND DRAIN CODE BREAKS ARE AT THE DOWNSTREAM END OF THE OUTER ISOLATION VALVE PER 1-88Y-889111 UNLESS NOTED OTHERWISE.
 7. DELETED.
 8. CLEANLINESS CLASS "B".
 9. * INDICATES VALVES SUPPLIED BY WESTINGHOUSE.
 10. * INDICATES 3/4" FLOW RESTRICTOR INSTALLED. SEE APPLICABLE DETAIL ON DRAWING RC-28848.
 11. DELETED.
 12. LOCATE CONNECTION CLOSE TO VALVES V138 & V139.
 13. DELETED.
 14. DELETED.
 15. DELETED.
 16. SYSTEM DESCRIPTION NUMBER IS N44/N45/284.
 17. * INDICATES REVISION LEVEL.
 18. INTERNALS REMOVED FROM CHECK VALVE SI-V297.
 19. ALL FUNCTIONAL TEST ARE PREFIXED 1818.
 20. FUNCTIONAL TEST BOUNDARIES ARE DESIGNATED BY THE LAST 3 DIGITS.

PORTIONS OF THIS DRAWING ARE
NUCLEAR SAFETY RELATED

REV	DATE	ISSN	DRWN	CHKD	CODE	SEC	DESCRIPTION
12	4/14/81	RWS		D&S	DES	APL	INCOMP. DCR 98-8845 DCM 88, 04-
11	5/25/81	MPW		DVS	PAC	HRB	INCOMP. DCR 96-8821 DCM 88
10	11/12/81	BCL		MPW	VMS	RSG	INCOMP. MHOOD 98-538 CA-B
9	4/14/84	BCL		MPW	DWS	DMD	INCOMP. MHOOD 93-517 CA-B
8	8/18/82	BCL		DWS	HRB	DHP	INCOMP. DCR 89-73 CA-B
7	4/28/82	HRB		DWS	BCL	JEV	REV. LINE 150 PER SEC. 155
6	12/5/81	HRB		RMC	PAL	APL	INCOMP. MHOOD 91-515 CA-B
5	8/18/81	HRB		RMC	DWS	APL	INCOMP. DCR 84-12 CA-B2
4	8/30/80	GPH		RMC	APL	BCL	INCOMP. MHOOD 84-538 REV 80 DELETED NOTE 7 REVISION LEGEND NOTE A ADDED "S" SIGNAL FOR V138 PER N44 DWS 88484. TEST DMS NO. 8 BOUNDARY
3	1/23/81	GPH	JH	DWS	BCL	RRC	INCORPORATED DCR 87-154 REV'D NOTES 16, 18 & 16. LEGEND NOTE PER 975-8-88888. ADDED CONT. "S" MTS & COORDINATION COORD. INTEG. TEST INFO. A2 ALPHABET DESIGNATION FOR LEGEND NOTE. DELETED NOTES 3, 11, 14 & 15. NON SI FLOW WITH PIPING REWORKING DMS CONT. TEST THE LINE PER INSTR. TEST INSTRUMENTS. 1. 2. 3. 4. 5. 6. 7. 8. 9. 10. 11. 12. 13. 14. 15. 16. 17. 18. 19. 20. 21. 22. 23. 24. 25. 26. 27. 28. 29. 30. 31. 32. 33. 34. 35. 36. 37. 38. 39. 40. 41. 42. 43. 44. 45. 46. 47. 48. 49. 50. 51. 52. 53. 54. 55. 56. 57. 58. 59. 60. 61. 62. 63. 64. 65. 66. 67. 68. 69. 70. 71. 72. 73. 74. 75. 76. 77. 78. 79. 80. 81. 82. 83. 84. 85. 86. 87. 88. 89. 90. 91. 92. 93. 94. 95. 96. 97. 98. 99. 100. 101. 102. 103. 104. 105. 106. 107. 108. 109. 110. 111. 112. 113. 114. 115. 116. 117. 118. 119. 120. 121. 122. 123. 124. 125. 126. 127. 128. 129. 130. 131. 132. 133. 134. 135. 136. 137. 138. 139. 140. 141. 142. 143. 144. 145. 146. 147. 148. 149. 150. 151. 152. 153. 154. 155. 156. 157. 158. 159. 160. 161. 162. 163. 164. 165. 166. 167. 168. 169. 170. 171. 172. 173. 174. 175. 176. 177. 178. 179. 180. 181. 182. 183. 184. 185. 186. 187. 188. 189. 190. 191. 192. 193. 194. 195. 196. 197. 198. 199. 200. 201. 202. 203. 204. 205. 206. 207. 208. 209. 210. 211. 212. 213. 214. 215. 216. 217. 218. 219. 220. 221. 222. 223. 224. 225. 226. 227. 228. 229. 230. 231. 232. 233. 234. 235. 236. 237. 238. 239. 240. 241. 242. 243. 244. 245. 246. 247. 248. 249. 250. 251. 252. 253. 254. 255. 256. 257. 258. 259. 260. 261. 262. 263. 264. 265. 266. 267. 268. 269. 270. 271. 272. 273. 274. 275. 276. 277. 278. 279. 280. 281. 282. 283. 284. 285. 286. 287. 288. 289. 290. 291. 292. 293. 294. 295. 296. 297. 298. 299. 300. 301. 302. 303. 304. 305. 306. 307. 308. 309. 310. 311. 312. 313. 314. 315. 316. 317. 318. 319. 320. 321. 322. 323. 324. 325. 326. 327. 328. 329. 330. 331. 332. 333. 334. 335. 336. 337. 338. 339. 340. 341. 342. 343. 344. 345. 346. 347. 348. 349. 350. 351. 352. 353. 354. 355. 356. 357. 358. 359. 360. 361. 362. 363. 364. 365. 366. 367. 368. 369. 370. 371. 372. 373. 374. 375. 376. 377. 378. 379. 380. 381. 382. 383. 384. 385. 386. 387. 388. 389. 390. 391. 392. 393. 394. 395. 396. 397. 398. 399. 400. 401. 402. 403. 404. 405. 406. 407. 408. 409. 410. 411. 412. 413. 414. 415. 416. 417. 418. 419. 420. 421. 422. 423. 424. 425. 426. 427. 428. 429. 430. 431. 432. 433. 434. 435. 436. 437. 438. 439. 440. 441. 442. 443. 444. 445. 446. 447. 448. 449. 450. 451. 452. 453. 454. 455. 456. 457. 458. 459. 460. 461. 462. 463. 464. 465. 466. 467. 468. 469. 470. 471. 472. 473. 474. 475. 476. 477. 478. 479. 480. 481. 482. 483. 484. 485. 486. 487. 488. 489. 490. 491. 492. 493. 494. 495. 496. 497. 498. 499. 500. 501. 502. 503. 504. 505. 506. 507. 508. 509. 510. 511. 512. 513. 514. 515. 516. 517. 518. 519. 520. 521. 522. 523. 524. 525. 526. 527. 528. 529. 530. 531. 532. 533. 534. 535. 536. 537. 538. 539. 540. 541. 542. 543. 544. 545. 546. 547. 548. 549. 550. 551. 552. 553. 554. 555. 556. 557. 558. 559. 560. 561. 562. 563. 564. 565. 566. 567. 568. 569. 570. 571. 572. 573. 574. 575. 576. 577. 578. 579. 580. 581. 582. 583. 584. 585. 586. 587. 588. 589. 590. 591. 592. 593. 594. 595. 596. 597. 598. 599. 600. 601. 602. 603. 604. 605. 606. 607. 608. 609. 610. 611. 612. 613. 614. 615. 616. 617. 618. 619. 620. 621. 622. 623. 624. 625. 626. 627. 628. 629. 630. 631. 632. 633. 634. 635. 636. 637. 638. 639. 640. 641. 642. 643. 644. 645. 646. 647. 648. 649. 650. 651. 652. 653. 654. 655. 656. 657. 658. 659. 660. 661. 662. 663. 664. 665. 666. 667. 668. 669. 670. 671. 672. 673. 674. 675. 676. 677. 678. 679. 680. 681. 682. 683. 684. 685. 686. 687. 688. 689. 690. 691. 692. 693. 694. 695. 696. 697. 698. 699. 700. 701. 702. 703. 704. 705. 706. 707. 708. 709. 710. 711. 712. 713. 714. 715. 716. 717. 718. 719. 720. 721. 722. 723. 724. 725. 726. 727. 728. 729. 730. 731. 732. 733. 734. 735. 736. 737. 738. 739. 740. 741. 742. 743. 744. 745. 746. 747. 748. 749. 750. 751. 752. 753. 754. 755. 756. 757. 758. 759. 760. 761. 762. 763. 764. 765. 766. 767. 768. 769. 770. 771. 772. 773. 774. 775. 776. 777. 778. 779. 780. 781. 782. 783. 784. 785. 786. 787. 788. 789. 790. 791. 792. 793. 794. 795. 796. 797. 798. 799. 800. 801. 802. 803. 804. 805. 806. 807. 808. 809. 810. 811. 812. 813. 814. 815. 816. 817. 818. 819. 820. 821. 822. 823. 824. 825. 826. 827. 828. 829. 830. 831. 832. 833. 834. 835. 836. 837. 838. 839. 840. 841. 842. 843. 844. 845. 846. 847. 848. 849. 850. 851. 852. 853. 854. 855. 856. 857. 858. 859. 860. 861. 862. 863. 864. 865. 866. 867. 868. 869. 870. 871. 872. 873. 874. 875. 876. 877. 878. 879. 880. 881. 882. 883. 884. 885. 886. 887. 888. 889. 890. 891. 892. 893. 894. 895. 896. 897. 898. 899. 900. 901. 902. 903. 904. 905. 906. 907. 908. 909. 910. 911. 912. 913. 914. 915. 916. 917. 918. 919. 920. 921. 922. 923. 924. 925. 926. 927. 928. 929. 930. 931. 932. 933. 934. 935. 936. 937. 938. 939. 940. 941. 942. 943. 944. 945. 946. 947. 948. 949. 950. 951. 952. 953. 954. 955. 956. 957. 958. 959. 960. 961. 962. 963. 964. 965. 966. 967. 968. 969. 970. 971. 972. 973. 974. 975. 976. 977. 978. 979. 980. 981. 982. 983. 984. 985. 986. 987. 988. 989. 990. 991. 992. 993. 994. 995. 996. 997. 998. 999. 1000.

North Atlantic Energy Service Corporation

**SAFETY INJECTION SYSTEM
HIGH HEAD INJECTION SYSTEM
DETAIL**

SEABROOK STATION PID- 1-SI-D20447

D-67