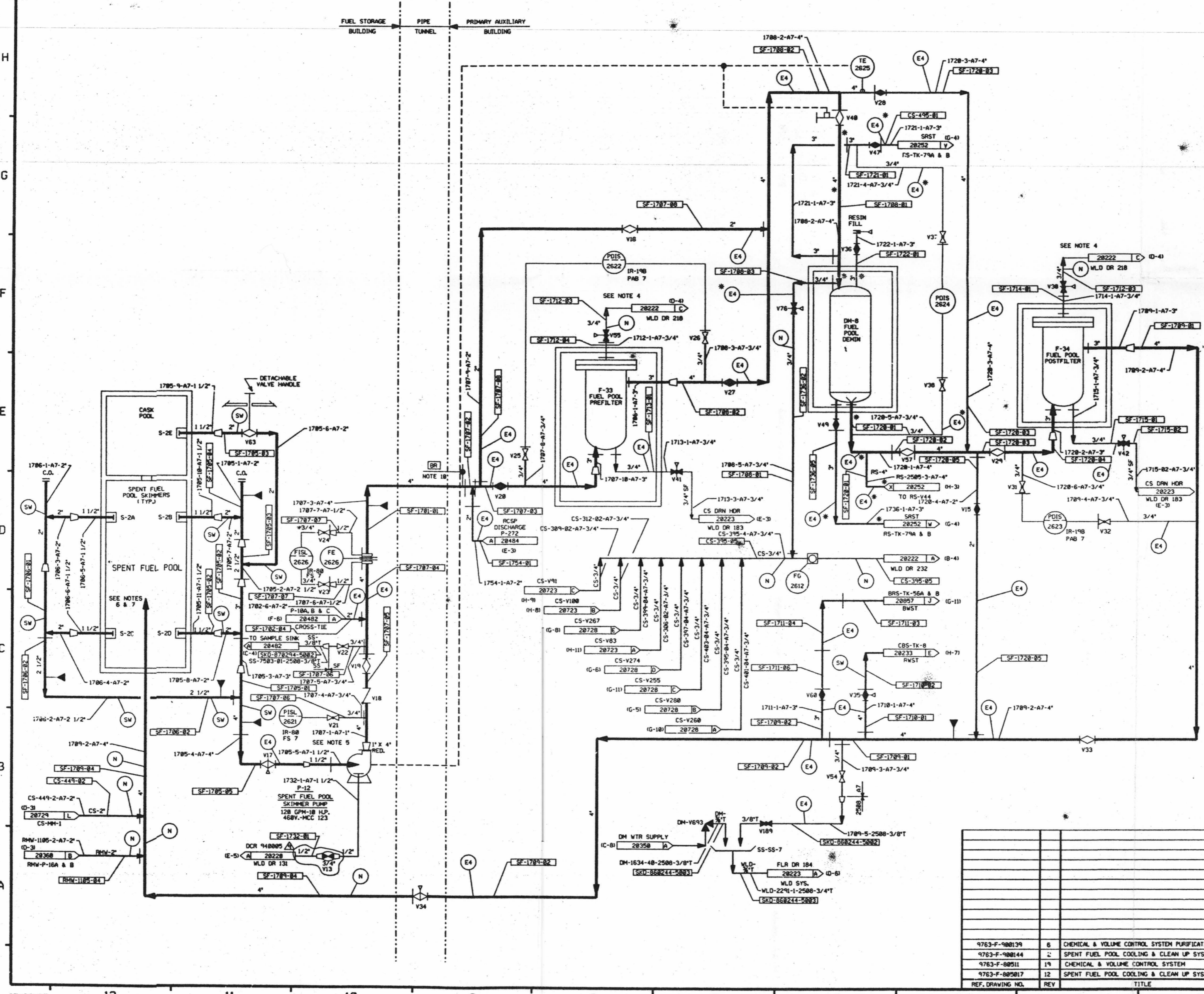


PID-1-SF-D20483



FOR PAID REFERENCE DRAWINGS, SYMBOLS, AND ABBREVIATIONS REFER TO DRAWINGS PAID-LEGEND 1 AND PAID LEGEND 2.

LEGEND

DESIGN SYMBOL	DESIGN PRESSURE	TEST PRESSURE	MIN. TEST TEMP.	TEST MEDIUM
TEST BOUNDARY				
INTEGRITY TEST	150 PSIG	225/245 PSIG	35	WATER
INTEGRITY TEST	150 PSIG	187.5/199 PSIG	68	WATER
STANDING WATER				
NO TEST REQUIRED				
(SEE NOTE B)	150 PSIG	225/245 PSIG	68	WATER

NOTES:
A. VENTS & DRAINS WITH CAPS/BLIND FLANGES ETC SHALL BE TESTED UP TO THE LAST ISOLATION VALVE.
B. LINES MARKED WITH AN ASTERISK (*) INDICATES PIPING AND COMPONENTS TO BE TESTED AS PER REG. GUIDE L143 ALL OTHER LINES MAY BE INSERVICE TESTED OR TESTED PER THE LEGEND.

- NOTES:**
- WORK THIS DRAWING WITH 2048B, 2048C & 2048A.
 - ALL LINES, VALVES, EQUIPMENT, COMPONENTS AND INSTRUMENTS HAVE SYSTEM PREFIX 1-SF, UNLESS NOTED OTHERWISE.
 - ALL LINES, VALVES, EQUIPMENT, COMPONENTS AND INSTRUMENTS ARE SAFETY CLASS NMS, UNLESS NOTED OTHERWISE.
 - VENT LINES FROM FILTERS ARE MANIFOLD AND RUN THROUGH A COMMON SIGHT GLASS. VALVES ARE LOCATED NEAR MANIFOLD.
 - SEMI TRANSITION PIECE.
 - RETURN TERMINATES 11 FT ABOVE SPENT FUEL ASSEMBLIES.
 - DELETED
 - RELOCATED
 - CLEANLINESS CLASS "B"
 - (BR) THIS SYMBOL DENOTES BUILDING BOUNDARY RESTRAINT SUPPORTS THAT ARE DESIGNED FOR SEISMIC CATEGORY 1 THAT ARE BEYOND THE BUILDING BOUNDARY TO THE FIRST ANCHOR IF FIRST ANCHOR MAY CONSIST OF SEVERAL SUPPORTS COVERING THE X,Y,Z FUNCTIONS SEE SUPPORT DRAWING FOR DETAILS.
 - S.D. NO. 27
 - INDICATES REVISION LEVEL

REV	DATE	DSGN	DRWN	CHKD	CDE	SES	DESCRIPTION
1	11/18/96	MPW	OPD	MPW	VNK	RRC	DELETED VALVE CS-V74HSHWLN ON CS P20 ADDED INTO REF. DRAWING REVISED PER ERECTION PIPING 150 SF-1788-B2 ADDED LINE SIZES & INSTRUMENT RACK LOCATION ADDED DELETED LEGAL REF. DWS ADDED CONTINUATION
2	1/14/97	JHM	TAK	WRD	BCL	VMS	INCORP. DCR 597
3	5/21/91	MPB	FCB	JM	BCL	GRM	INCORP. DCR 87-294 CAB4
4	5/24/90	MPB	FCB	JM	DWS	JEV	RELOCATED NOTE 8 TO LEGEND NOTE B. REVISED LEGEND NOTE A.
5	5/26/90	MPB	DWS	MPW	BCL	INCORP. DCR 86-244 CAB	
6	4/5/97	BCL	MPW	MPZ	MPZ	INCORP. MHOOD 91-587 CAB	
7	1/2/93	BCL	DWS	MPB	JLO	INCORP. MHOOD 93-573 CAB	
8	1/2/93	DWS	MPB	MPB	FCB	INCORP. DCR 948895 CAB4 & 5	
9	5/3/97	DWS	MPW	MPW	FCB	INCORP. DCR 948895 CAB4 & 5	

North Atlantic Energy Service Corporation

SPENT FUEL POOL COOLING AND CLEAN-UP SYSTEM DETAIL

PID- 1-SF-D20483

REF. DRAWING NO.	REV.	TITLE
9763-F-988139	6	CHEMICAL & VOLUME CONTROL SYSTEM PURIFICATION MITD
9763-F-988144	2	SPENT FUEL POOL COOLING & CLEAN UP SYS. MITD
9763-F-989511	19	CHEMICAL & VOLUME CONTROL SYSTEM
9763-F-989517	12	SPENT FUEL POOL COOLING & CLEAN UP SYS. PAID

D-64