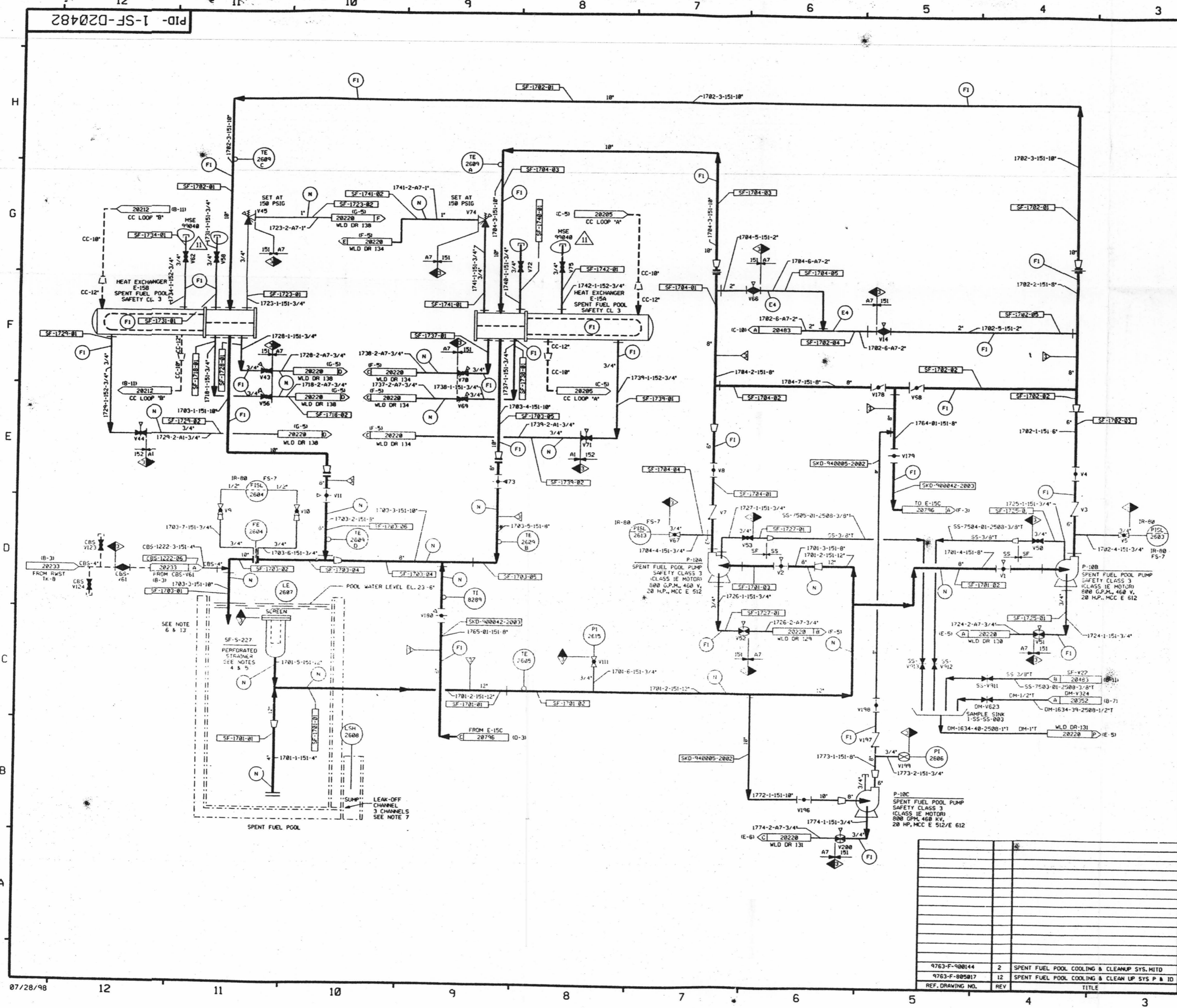


FOR INFORMATION ONLY



FOR PAID REFERENCE DRAWINGS, SYMBOLS AND ABBREVIATIONS REFER TO DRAWINGS PAID - LEGEND 1 AND PAID - LEGEND 2

LEGEND				
DESIGN	TEST	MIN. TEST	TEST	
PRESSURE	PRESSURE	TEMP °F	MEDIUM	
(FI)	INTEGRITY TEST	150 PSIG	187.5/199 PSIG	68 WATER
(E4)	INTEGRITY TEST	150 PSIG	225/245 PSIG	35 WATER
(SW)	STANDING WATER			
(N)	NO TEST REQUIRED			

NOTE: VENTS & DRAINS WITH CAPS/BLIND FLANGES ETC. SHALL BE TESTED TO THE LAST ISOLATION VALVE.

- NOTES:
1. WORK THIS DRAWING WITH 20488, 20483 & 20484.
  2. PIPING, VALVES, EQUIPMENT & INSTRUMENTS HAVE SYSTEM PREFIX 'SF', UNLESS OTHERWISE NOTED.
  3. VENTS, DRAINS AND TEST CONNECTIONS CODE BREAKS ARE AT THE DOWNSTREAM END OF THE OUTER ISOLATION VALVE PER 1-NHT-60511 UNLESS NOTED OTHERWISE.
  4. PROVIDE BLIND FLANGES NECESSARY ONLY WHEN DOWATERING POOL PIPE IS SAFETY CLASS 3 STRAINER IS CLASS NWS.
  5. SUCTION IS LOCATED 2 FT BELOW THE NORMAL WATER LEVEL.
  6. RETURN TERMINATES 11 FT ABOVE SPENT FUEL ASSEMBLIES.
  7. PORTABLE PUMP IS USED TO REMOVE WATER AS REQUIRED FROM LEAK-OFF CHANNEL SUMP TO FLR DRAIN SUMP.
  8. Δ INDICATES REVISION LEVEL.
  9. DELETED
  10. CLEANLINESS CLASS 'B'.
  11. SYSTEM DESCRIPTION NO. IS SD-27.
  12. DELETED
  13. EMERGENCY MAKE-UP TO SPENT FUEL POOL FROM THE CST USING TEMPORARY HOSE (CD-30426 U-1).

PORTIONS OF THIS DRAWING ARE  
**NUCLEAR SAFETY RELATED**

REV	DATE	DSGN	DRWN	CHKD	CODE	SES	DESCRIPTION
11	7/25/99	BGS	M/L	D/S	AMP	INCORP. HSE 99048 REV. B.1.2	
10	7/26/98	BGS	M/L	D/S	AMP	INCORP. DCR 97-14 DCM B1	
9	8/18/97	MPW	BGS	DWS	VWS	INCL. 4-100 96-558 DCM B1	
8	5/13/97	DWS	MPW	DGS	PER	FINAL INCORP. DCR 94085 DCM# & 14	
7	3/23/97	DWS	BGS	MPW	PEB	2ND PARTIAL INCORP. DCR 94085 DCM# & 14	
6	3/23/97	DWS	BGS	MPW	PEB	PARTIAL INCORP. DCR 94085 DCM# & 14	
5	12/23/96	RHC	MPW	RRC	INCORP. DCR 90-42 C432		
4	8/14/96	HRB	JM	FCB	GPM	BCL INCORP. DCR 90-842 CAB	
3	5/21/94	HRB	RMC	JM	BCL	GRM INCORP. DCR 87-294 CAB	
2	7/8/88	MPW	RMC	GPM	APL	RRC	REVISED NOTE 3 AND 4 ADDED OUT OF FUNCTION INFORMATION ON CBS SYSTEM FOR CLARIFICATION IN REFERENCE LEGEND NOTE PER 97034P & 98080B & ANSI B31.1 1977 SEC. 137.1.2E DELETED NWS-1 CL BOUNDARY ADDED CONT. RES. LOCK SPEC. BREAKS, LINE NOS., FLOWS, NOTES 11 & 12, MTO REF. DNG. DELETED NOTE 4, REVISED VALVE NOS. PER ERECTION ISO.
1	11/26/88	MPW	OPD	WRD	BCL	RRC	
0	7/22/88	DWS	LEK	CRD	SC	JMS	RRC
REV	DATE	DSGN	DRWN	CHKD	CODE	SES	DESCRIPTION

**North Atlantic** Energy Service Corporation

SPENT FUEL POOL COOLING AND CLEAN-UP SYSTEM  
DETAIL

SEABROOK STATION PID- 1-SF-D20482

D-63