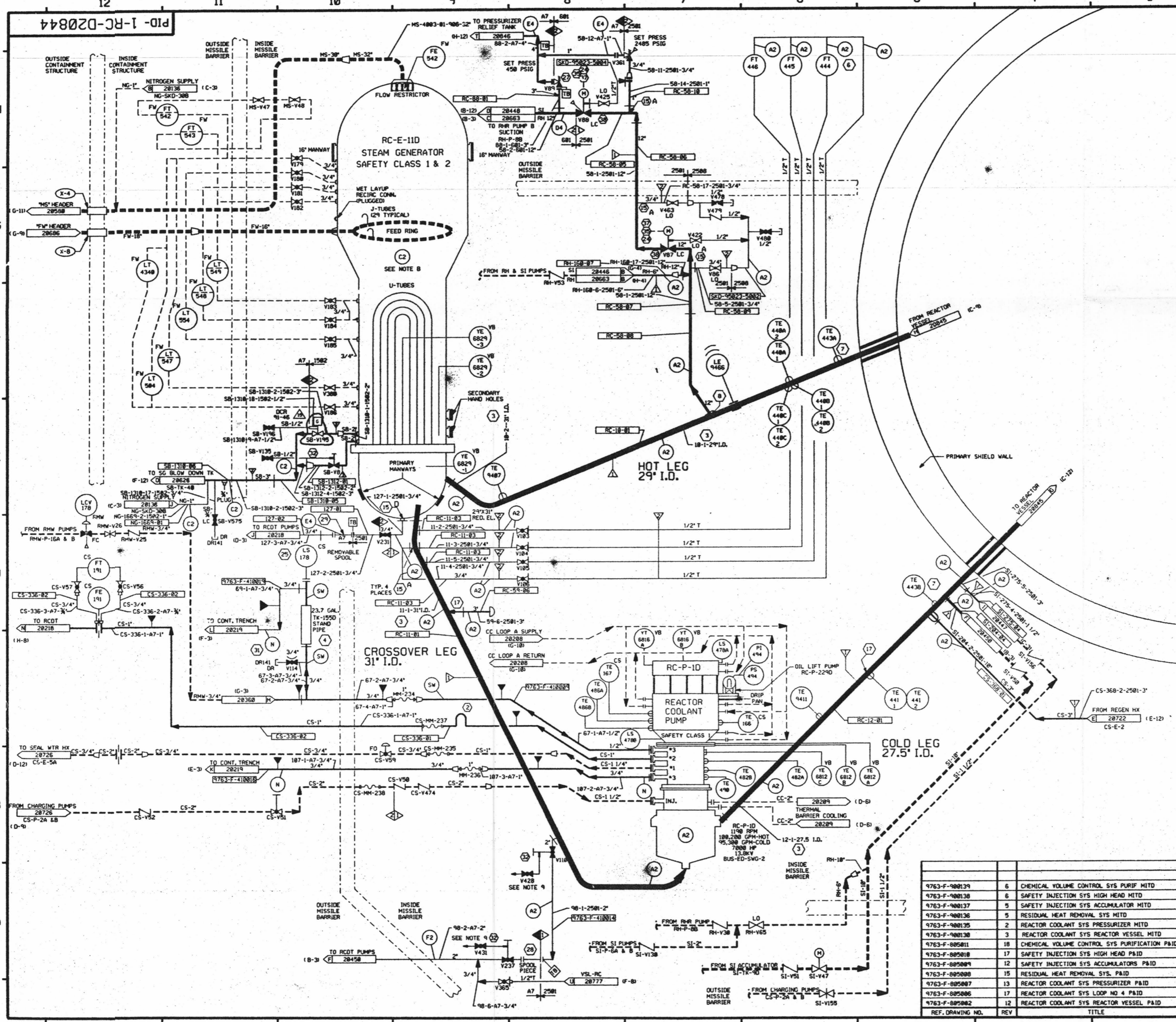


FOR INFORMATION ONLY



FOR PAID REFERENCE DRAWINGS, SYMBOLS AND ABBREVIATIONS REFER TO DRAWINGS PAID - LEGEND 1 AND PAID - LEGEND 2

**LEGEND**

DESIGN SYMBOL	TEST PRESSURE	TEST TEMP °F	MIN. TEST MEDIUM
Y			TEST BOUNDARY
YB			TEMPORARY TEST BOUNDARY
A2	2485 PSIG	3186/3242 PSIG	100 DM WATER
C2	1195 PSIG	1481/1578 PSIG	100 DM WATER
D4	688 PSIG	756/745 PSIG	35 DM WATER
E4	158 PSIG	225/245 PSIG	35 DM WATER
E9	288 PSIG	388/318 PSIG	35 DM WATER
F2	188 PSIG	158/178 PSIG	35 WATER
P6	18 PSIG	15/18 PSIG	35 AIR/H <sub>2</sub> O
SW			STANDING WATER
N			NO TEST REQUIRED

**NOTES:**

- A. VENTS AND DRAINS WITH CAPS/BLIND FLANGES ETC. (ASME CL 2 & 3) SHALL BE TESTED TO THE LAST ISOLATION VALVE.
- B. THE TEMPERATURE OF BOTH VESSEL AND WATER MUST BE ABOUT THE SAME AND AT LEAST 182 F, BUT LESS THAN 158 F. SEE STEAM GENERATOR MANUAL FP 55134 FOR ADDITIONAL HYDROTEST REQUIREMENTS.

- NOTES:**
1. (C) INDICATES GENERAL NOTE NUMBER - REFER TO DRAWING 28048 FOR GENERAL NOTES.
  2. WORK THIS DRAWING WITH DRAWINGS 28048 THROUGH 28043 AND 28045 THROUGH 28046 & 28046.
  3. ALL LINES, EQUIPMENT, COMPONENTS, AND INSTRUMENTATION HAVE SYSTEM PREFIX RC UNLESS OTHERWISE NOTED.
  4. VENT, DRAIN AND TEST CODE BREAKS ARE AT THE DOWNSTREAM END OF THE OUTER ISOLATION VALVE PER 1-MHY-08011 UNLESS NOTED OTHERWISE.
  5. Δ - INDICATES REVISION LEVEL.
  6. CLEANLINESS CLASS 'B' (SB SYSTEM IS CLASS 'C').
  7. SYSTEM DESCRIPTION NO. IS NNA/NCH 281.
  8. DELETED.
  9. VALVE STEM LEAK-OFF ISOLATION VALVES V428 & V431 ARE TO BE MAINTAINED CLOSED. VALVE STEM LEAK-OFF TO BE CONSIDERED INOPERABLE.

PORTIONS OF THIS DRAWING ARE NUCLEAR SAFETY RELATED

REV	DATE	DSGN	DRWN	CHKD	CODE	DESCRIPTION
15	7/26/98	MPW	DLG	WMA	MM	INCRP DCR 91-46 DCN 08
14	7/26/97	MPW	BCS	DWS	VWS	INCRP MHD 96-558 DCN 01
13	11/23/96	MPW	BCS	RRC	DMD	INCRP DCR 95-23 CAP 6.3 7. & 11
12	7/22/94	BCL	DWS	MPW	JHDC	INCRP DCR 948814 CAP 8
11	11/3/92	DWS	BCL	MRS	ES	INCRP DCR 908803 CAP 8
10	4-28-92	MRS	DWS	BCL	RRB	INCRP MHD 91-515 CAP 8
REV						DESCRIPTION
9						RESIDUAL HEAT REMOVAL SYS MITD
8						REACTOR COOLANT SYS PRESSURIZER MITD
7						REACTOR COOLANT SYS REACTOR VESSEL MITD
6						CHEMICAL VOLUME CONTROL SYS PURIFICATION PAID
5						SAFETY INJECTION SYS HIGH HEAD PAID
4						REACTOR COOLANT SYS PRESSURIZER MITD
3						REACTOR COOLANT SYS REACTOR VESSEL MITD
2						REACTOR COOLANT SYS PRESSURIZER MITD
1						REACTOR COOLANT SYS LOOP NO 4 PAID
						REACTOR COOLANT SYS PRESSURIZER MITD
						REACTOR COOLANT SYS REACTOR VESSEL PAID

**North Atlantic Energy Service Corporation**

REACTOR COOLANT SYSTEM LOOP NO. 4

PID- 1-RC-D20844

SEABROOK STATION

D-55