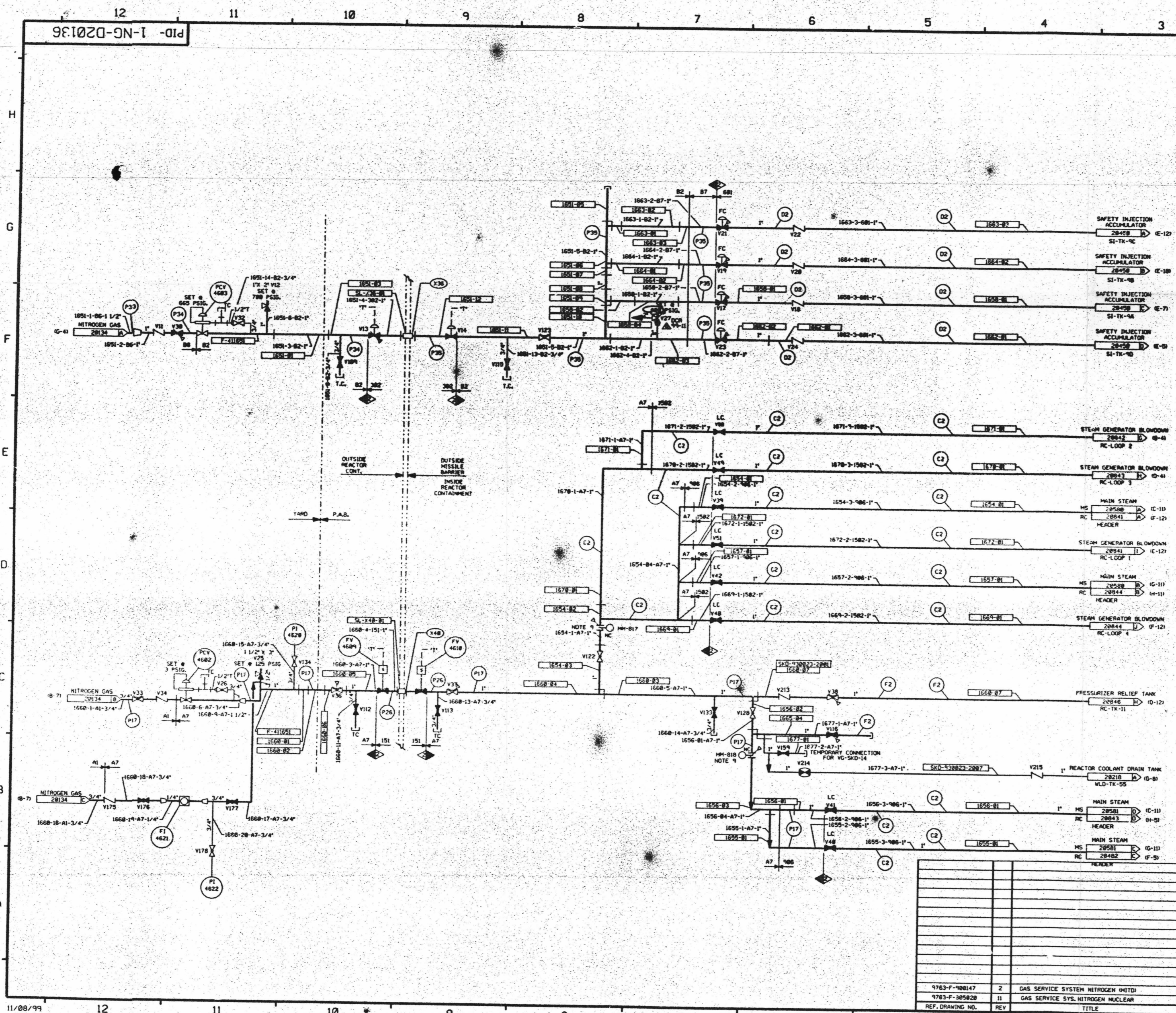


FOR INFORMATION ONLY



FOR PAID REFERENCE DRAWINGS, SYMBOLS AND ABBREVIATIONS REFER TO DRAWINGS PAID - LEGEND 1 AND PAID - LEGEND 2.

LEGEND

TEST BOUNDARY	DESIGN PRESSURE	TEST PRESSURE	MIN. TEST TEMP	TEST MEDIUM
⊙ C2	1185 PSIG	1481/1578 PSIG	35	WATER
⊙ D2	780 PSIG	875/927.5 PSIG	35	WATER
⊙ P2	180 PSIG	198/178 PSIG	35	WATER
⊙ P7	150 PSIG	168/225 PSIG	35	AIR/H ₂
⊙ P28	150 PSIG	187.5/194 PSIG	35	AIR/H ₂
⊙ P30	2848 PSIG	3388/3908 PSIG	35	AIR
⊙ P34	780 PSIG	848/1050 PSIG	35	AIR
⊙ P35	780 PSIG	875/928 PSIG	35	AIR

NOTE: A VENTS & DRAINS WITH CAPS/BLOCK FLANGES ETC. SHALL BE TESTED TO THE LAST ISOLATION VALVE.

- NOTES:**
1. WORK THIS DRAWING WITH DRAWINGS 28132, 28134, & 28135
 2. ALL LINES, EQUIPMENT, COMPONENTS, AND INSTRUMENTS HAVE SYSTEM PREFIX NG, UNLESS NOTED OTHERWISE.
 3. ALL LINES, EQUIPMENT, COMPONENTS, AND INSTRUMENTS ARE SAFETY CLASS UNLESS NOTED OTHERWISE.
 4. CLEANLINESS CLASS 'B'.
 5. DELETED.
 6. DELETED.
 7. Δ INDICATES REVISION LEVEL.
 8. SD NO. IS SD-38.
 9. SPECTACLE FLANGE IS IN THE OPEN POSITION WHEN H₂ GAS SUPPLY IS REQUIRED DURING PLANT SHUTDOWN.

PORTIONS OF THIS DRAWING ARE
NUCLEAR SAFETY RELATED

REV	DATE	DSGN	DRWN	CHKD	CODE	DESCRIPTION
5	11/8/99	BCS	MPV	BCL	JLD	INCORP DCR-99-11 DCR-8
4	8/25/99	MPV	DMS	BCL	JLD	INCORP DCR-93-23 CA-8 & CA-3
3	4/14/99	MPV	BCL	DMS	JEV	INCORP PROCS 91-515 CAB & 91-511 CAB
2	1/23/98	MPV	FCB	MPL	CCH	INCORP PROCS 98-583 CAB REVISED NOTE 3, LEGEND NOTE A PER ANSI B31.1 1977 SEC 131.1.2E DELETED NOTES 3, 8 ADDED TEST CODES PER DMS, REVISIONS ADDED DMS, LOC. COORD. & CORRECTED P178 P1 WAS IN ERROR ADDED NOTES 7 & 8 & 9 WITH DMS TO REF. BLOCK REVISED PIPING PER PIPING ERRECTION 150.
1	10/17/96	HAP	OPD	MPV	VNK	RRR
0	8/27/96	MES	DLB	JMS	JMS	ISSUED FOR OPERATIONS

North Atlantic Energy Service Corporation

SEABROOK STATION

NITROGEN GAS DETAIL

PID- 1-NG-D20136

REF. DRAWING NO.	REV	TITLE
4763-F-180147	2	GAS SERVICE SYSTEM NITROGEN UNIT
4763-F-185828	11	GAS SERVICE SYS. NITROGEN NUCLEAR

D-51