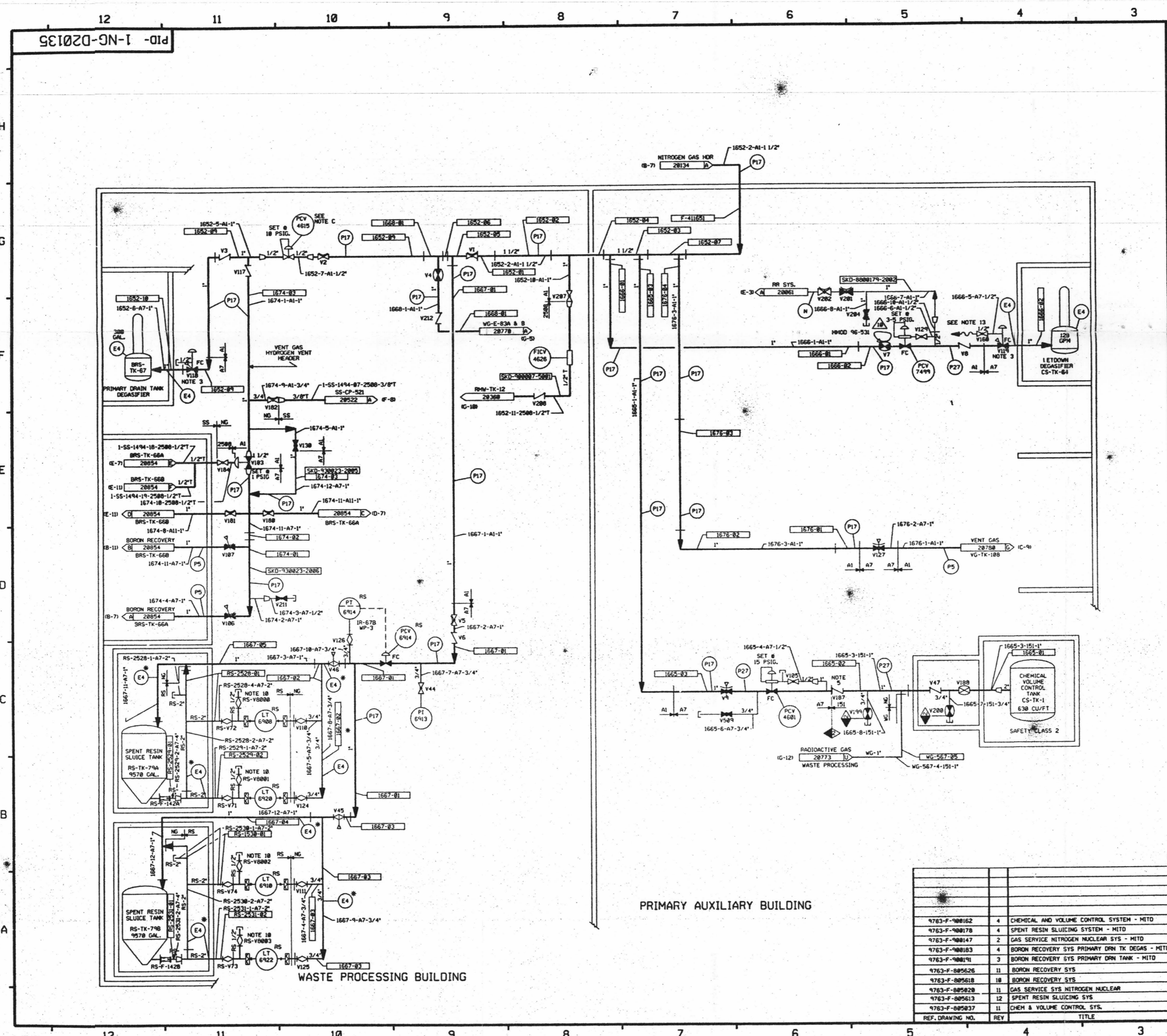


FOR INFORMATION ONLY



FOR PAID REFERENCE DRAWINGS, SYMBOLS AND ABBREVIATIONS REFER TO DRAWINGS PAID - LEGEND 1 AND PAID - LEGEND 2

LEGEND

TEST	DESIGN PRESSURE	TEST PRESSURE	MIN. TEST TEMP °F	TEST MEDIUM
† TEST (X)NDARY				
E4 INTEGRITY TEST	15	150 PSIG	225/245 PSIG	35 WATER
P8 INTEGRITY TEST	15	15 PSIG	18/22.5 PSIG	35 AIR/N ₂
P17 INTEGRITY TEST	15	150 PSIG	188/225 PSIG	35 AIR/N ₂
P27 INTEGRITY TEST	75	75 PSIG	94/100 PSIG	35 AIR/N ₂
E4 INTEGRITY TEST	150	150 PSIG	225/245 PSIG	35 WATER

NOTES:
 A. VENTS & DRAINS WITH CAPS/BLIND FLANGES ETC. SHALL BE TESTED TO THE LAST ISOLATION VALVE.
 B. LINES MARKED WITH AN ASTERISK (*) INDICATES PIPING AND COMPONENTS TO BE TESTED AS PER REG. GUIDE 1.4.3. ALL OTHER LINES MAY BE INSERVICE TESTED OR TESTED PER THE LEGEND.
 C. PCV-4615 WILL NOT TAKE P17 TEST PRESSURE ON THE DOWNSTREAM SIDE BECAUSE OF THE DIAPHRAGM IN THE TOPWORKS. OUR RECORD SHOWS THIS VALVE TO BE A HANGOVERLINE V17-22 WITH B-HUB L.B. SPRING. THE JAMOUR STATES TOP WORKS MUST BE REMOVED AND A PLATE INSTALLED FOR TESTING.

- NOTES
1. WORK THIS DRAWING WITH DRAWINGS 20130, 20134, & 20136
 2. ALL LINES, EQUIPMENT, COMPONENTS, AND INSTRUMENTS HAVE SYSTEM PREFIX NG, UNLESS NOTED OTHERWISE.
 3. VALVE TO BE INSTALLED WITH DEGASIFIER LIQUID UNDER THE VALVE SEAT
 4. ALL LINES, EQUIPMENT, COMPONENT AND INSTRUMENTS ARE SAFETY CLASS NMS, UNLESS NOTED OTHERWISE.
 5. LOCATE VALVE ADJACENT TO CYCT CUBICLE.
 6. DELETED
 7. CLEANLINESS CLASS 'B'
 8. DELETED
 9. DELETED
 10. CONNECT DEMINERALIZED WATER HOSE LINE FOR FLUSHING LEVEL INSTRUMENT LINE.
 11. △ INDICATES REVISION LEVEL
 12. SYSTEM DESCRIPTION NUMBER IS 50-30
 13. REFER TO DRAWING YSL-20774 FOR VALVE LEAKOFFS.

PORTIONS OF THIS DRAWING ARE NUCLEAR SAFETY RELATED

ID	DATE	BY	CHKD	APP'D	REV	DESCRIPTION
10	1/23/91	BCS				INCORP. MHOD 96-531 DCN-03
9	4/28/90	DWS				INCORP. MHOD 880588 DCN*00
8	6/12/87	MPW				INCORP. MHOD 86-531 DCN BB ADDED OPERATOR TO PCV-47 PER ITP 4786A
7	6/3/94	BCL				INCORP. DCN 93-23 CAB. 1 & 2 FOR BRUCE CA & 94
6	11/2/82	MRB				INCORP. DCN 88-174 CAB
5	4/22/82	MRB				INCORP. MHOD 81-515 CAB
4	8/21/81	MRB				REVISION 150 FOUNDARY
3	5/26/80	MRB				INCORP. DCN 80-71 CA 83 REVISION NOTE 4, LEGEND NOTE A PER REV 150 FOUNDARY
2	8/11/87	GPH				ADDED NOTE 11 TO LEGEND
1	8/17/80	MPW				REVISED ISO NETS & LINE NO. ADDED PER ITP 4786A FOR THE 150 FOUNDARY FOUNDATION

REF. DRAWING NO.	REV	TITLE
9763-F-080162	4	CHEMICAL AND VOLUME CONTROL SYSTEM - MITD
9763-F-080170	4	SPENT RESIN SLUICING SYSTEM - MITD
9763-F-080147	2	GAS SERVICE NITROGEN NUCLEAR SYS - MITD
9763-F-080183	4	BORON RECOVERY SYS PRIMARY DRN TK DEGAS - MITD
9763-F-080191	3	BORON RECOVERY SYS PRIMARY DRN TANK - MITD
9763-F-080526	11	BORON RECOVERY SYS
9763-F-080518	18	BORON RECOVERY SYS
9763-F-080528	11	GAS SERVICE SYS NITROGEN NUCLEAR
9763-F-080513	12	SPENT RESIN SLUICING SYS
9763-F-080537	11	CHEM & VOLUME CONTROL SYS

North Atlantic Energy Service Corporation

NITROGEN GAS DETAIL

SEABROOK STATION

PID- 1-NG-D20135

D-50