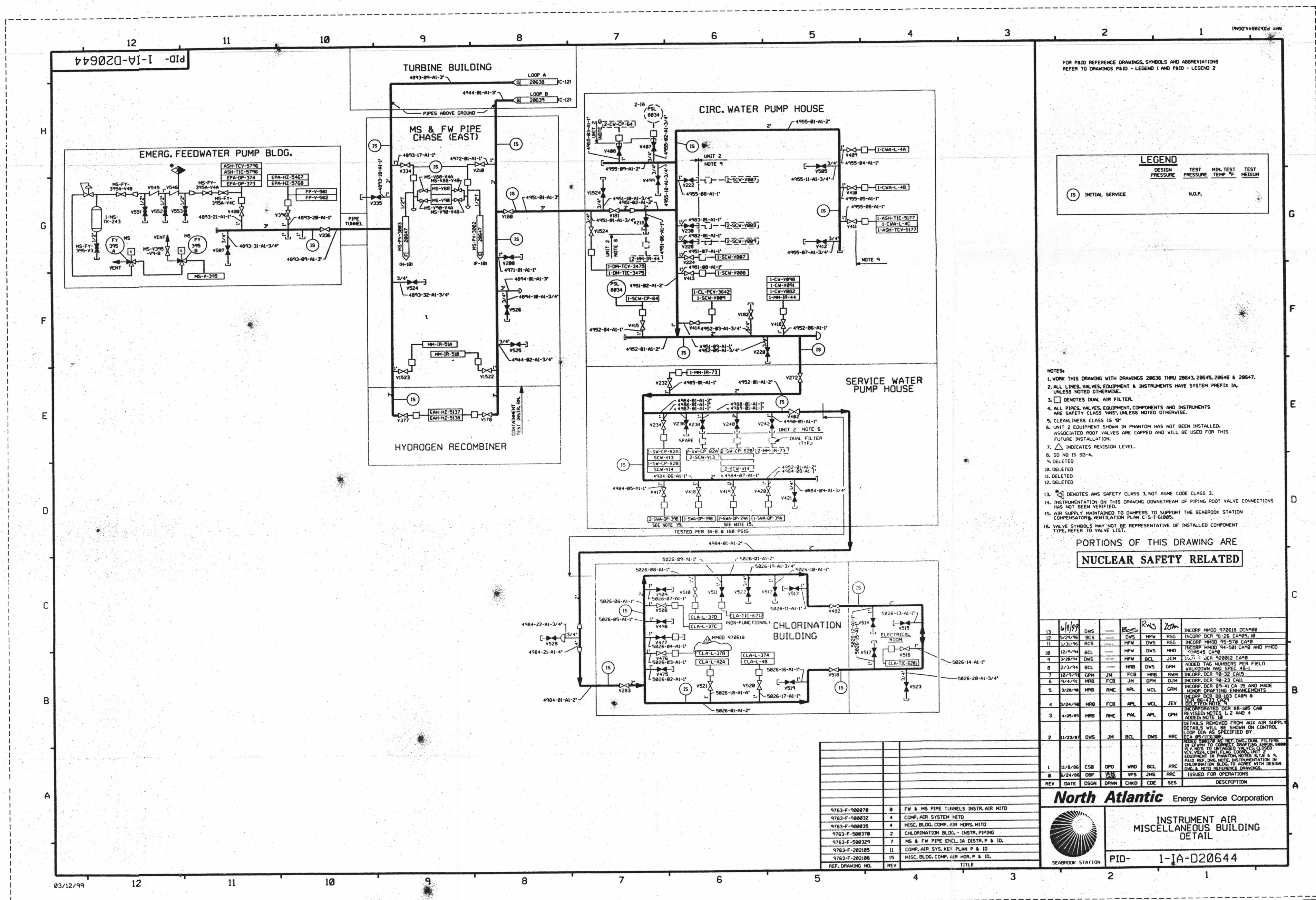


FOR INFORMATION ONLY



FOR PAID REFERENCE DRAWINGS, SYMBOLS AND ABBREVIATIONS REFER TO DRAWINGS PAID - LEGEND 1 AND PAID - LEGEND 2

LEGEND			
DESIGN	TEST	MIN. TEST	TEST
PRESSURE	PRESSURE	TEMP °F	MEDIUM
(IS)			N.O.P.

- NOTES:
1. WORK THIS DRAWING WITH DRAWINGS 20636 THRU 20643, 20645, 20646 & 20647.
 2. ALL LINES, VALVES, EQUIPMENT & INSTRUMENTS HAVE SYSTEM PREFIX IA, UNLESS NOTED OTHERWISE.
 3. □ DENOTES DUAL AIR FILTER.
 4. ALL PIPES, VALVES, EQUIPMENT, COMPONENTS AND INSTRUMENTS ARE SAFETY CLASS "NMS", UNLESS NOTED OTHERWISE.
 5. CLEANLINESS CLASS IS "B".
 6. UNIT 2 EQUIPMENT SHOWN IN PHANTOM HAS NOT BEEN INSTALLED. ASSOCIATED ROOT VALVES ARE CAPPED AND WILL BE USED FOR THIS FUTURE INSTALLATION.
 7. △ INDICATES REVISION LEVEL.
 8. SD NO IS SD-4.
 9. DELETED
 10. DELETED
 11. DELETED
 12. DELETED
 13. □ DENOTES AMS SAFETY CLASS 3, NOT ASME CODE CLASS 3.
 14. INSTRUMENTATION ON THIS DRAWING DOWNSTREAM OF PIPING ROOT VALVE CONNECTIONS HAS NOT BEEN VERIFIED.
 15. AIR SUPPLY MAINTAINED TO DAMPERS TO SUPPORT THE SEABROOK STATION COMPENSATOR VENTILATION PLAN C-5-1-61805.
 16. VALVE SYMBOLS MAY NOT BE REPRESENTATIVE OF INSTALLED COMPONENT TYPE. REFER TO VALVE LIST.

PORTIONS OF THIS DRAWING ARE
NUCLEAR SAFETY RELATED

REV	DATE	DSGN	DRWN	CHKD	CODE	SES	DESCRIPTION
13	6/14/99	DWS		BSS	RAS	ZOM	INCCORP HMOID 970618 DCM#88
12	5/24/96	BCL		DWS	MPW	RSC	INCCORP DCR 94-26 CAP#5, 10
11	12/21/96	BCL		MPW	DWS	RSC	INCCORP HMOID 95-578 CAP#
10	12/14/94	BCL		MPW	DWS	HNO	INCCORP HMOID 94-581 CAP# AND PHOD 94-581 CAP#
9	3/28/94	DWS		MPW	BCL	JCN	INCCORP HMOID 94-581 CAP#
8	2/23/94	BCL		HRB	DWS	GRH	ADDED TAG NUMBERS PER FIELD MAINTENANCE AND SPEC. 45-1
7	10/7/93	GPH	JM	FCB	HRB	RWH	INCCORP DCR 93-32 CA15
6	9/4/91	HRB	FCB	JM	GPH	DJM	INCCORP DCR 93-23 CA11
5	3/26/90	HRB	RNC	APL	WCL	GPH	INCCORP DCR 89-41 CA 15 AND MADE MINOR DRAINING IMPROVEMENTS
4	3/24/90	HRB	FCB	APL	WCL	JEV	INCCORP DCR 88-101 CA 15 AND MADE MINOR DRAINING IMPROVEMENTS
3	4/25/89	HRB	RNC	PAL	APL	GPH	INCCORP DCR 88-101 CA 15 AND MADE MINOR DRAINING IMPROVEMENTS
2	11/23/87	DWS	JM	BCL	DWS	RRC	REMOVED FROM AUX AIR SUPPLY DETAILS WILL BE SHOWN ON CONTROL LOOP DIA AS SPECIFIED BY
1	11/8/86	CSB	OPD	WRD	BCL	RRC	ISSUED FOR OPERATIONS
0	8/24/86	DFP	DFG	DFG	DFG	DFG	ISSUED FOR OPERATIONS

REF. DRAWING NO.	REV	TITLE
9763-F-900870	0	FW & MS PIPE TUNNELS INSTR. AIR MITD
9763-F-900872	4	COMP. AIR SYSTEM MITD
9763-F-900875	4	MISC. BLDG. COMP. AIR HORS. MITD
9763-F-508378	2	CHLORINATION BLDG. - INSTR. PIPING
9763-F-508324	7	MS & FW PIPE ENCL. IA DISTR. P & ID.
9763-F-202105	11	COMP. AIR SYS. KEY PLAN P & ID.
9763-F-202108	15	MISC. BLDG. COMP. AIR HOR. P & ID.

North Atlantic Energy Service Corporation

INSTRUMENT AIR MISCELLANEOUS BUILDING DETAIL

SEABROOK STATION PID-1-1A-D20644

D-41