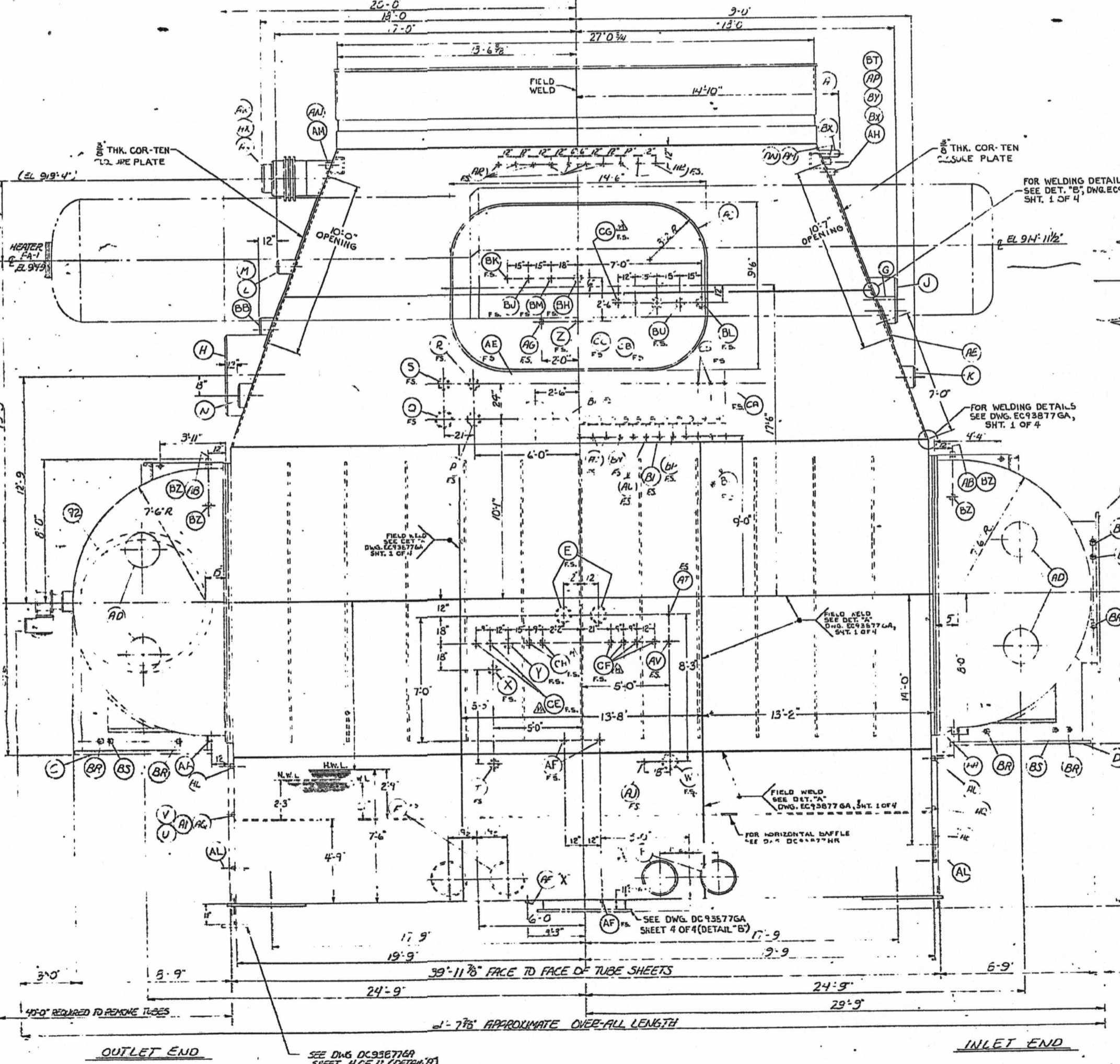


PLAN VIEW

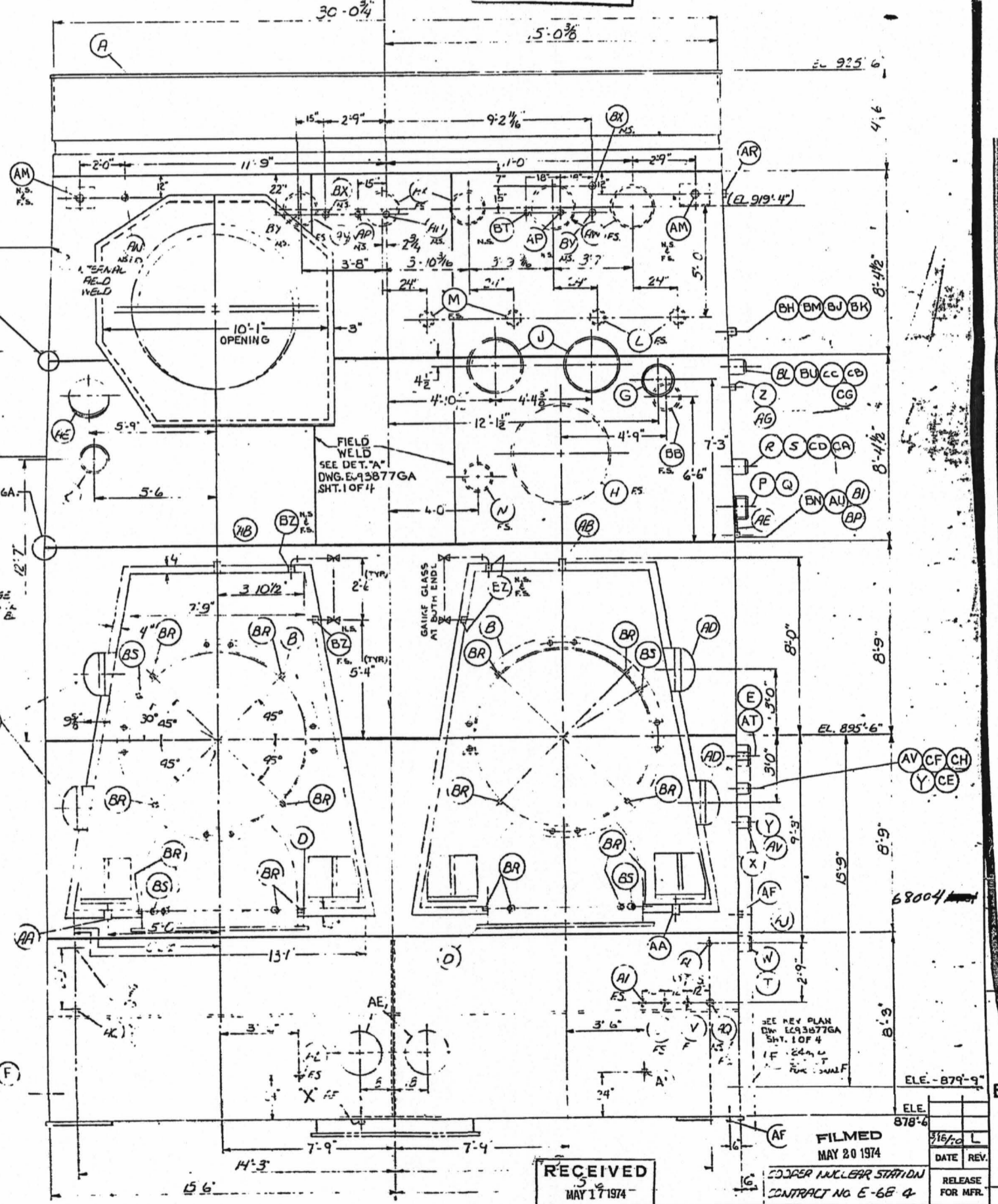
EXPIRES ON
 STOP MAR 27 2000 STOP
 NON-CONTROLLED
 PRINT

REV.	DATE	REVISION
A	1/18/68	REVISED PER B&R LETTER DATED 5-22-68 AND MARKED-UP PRINT DATED 5-20-68.
B	2/27/68	REORIENTED CROSS-OVER VALVE AT CONN. "AZ". REVISED AS PER BURNS & ROE LETTER DATED 8-15-68, AND MARKED-UP PRINT DATED 8-13-68. REDRAWN BY D.R.C. 10-22-68.
C	12/10/68	REVISED PER B&R LETTER DATED 11-13-68 AND MARKED-UP PRINT DATED 11-12-68. REVISED HOTWELL FOD AS PER BURNS & ROE DWG. M-134.
D	2/27/69	REVISED PER B&R LTR DATED 2-14-69 & MKD. PRT. DATED 1-17-69.
E	2/27/69	REVISED PER B&R LTR DATED 2-14-69 & MKD. PRT. DATED 2-3-69.
F	4/10/69	REVISED PER B&R LTR DATED 4-4-69 & MKD. PRT. DATED 3-28-69.
G	7/1/69	REVISED PER B&R LTR DATED 5-9-69 & MKD. PRT. DATED 5-7-69.
H	7/1/69	REVISED PER B&R LTR DATED 6-23-69 & MKD. PRT. DATED 6-21-69.
J	7/1/69	REVISED CONN. "B 5" AS PER BURNS & ROE TELEPHONE CONVERSATION.
K	7/1/69	REVISED PER B&R LTR DATED 7-30-69 & MARKED-UP PRINT DATED 7-27-69.
L	3/11/70	REVISED VERTICAL FIELD WELDS AT INLET-OUTLET ENDS IN SLOPE SECTION ONLY.
M	4/21/70	ADDED CONN. "CE", "CF", "CG", & "CH" AS PER B&R LTR DATED 3/24/70 AND MKD.-UP PRINT DATED 3/24/70.

RELEASED FOR FABRICATION
 SUBJECT TO SPECIFICATION REQUIREMENTS
 THE MANUFACTURER IS RESPONSIBLE FOR DESIGN, DETAIL, CONSTRUCTION AND DIMENSIONS.
 BURNS AND ROE, INC.
 NEW YORK
 DRAWN BY: JET
 JUN 8 1970



VIEW A-A



CONDENSER IA

RECEIVED
 MAY 1 1970
 BURNS and ROE
 HEMPSTEAD

FILMED
 MAY 20 1974
 RELEASE FOR MFR.
 RECEIVED
 MAY 1 1974
 INDUSTRIAL PRODUCTS DIVISION
 MARYLAND SHIPBUILDING & DRYDOCK CO.
 BALTIMORE, MD.
 46,000 SQ. FT. SURFACE CONDENSER
 SOLE PRESS. DIVIDED FROM TWIN SHELL
 (CONCLUDED 10)
 FOR CONSUMERS PUBLIC POWER DISTRICT
 DESIGNED BY: B&R:JES APPROVED BY: M.R.:S-3-68
 DRAWN BY: B&R:JES SCALE: DRWG. 3/4"=1'-0"
 CONT. NO. 93677 SHEET NO. EC93677GA