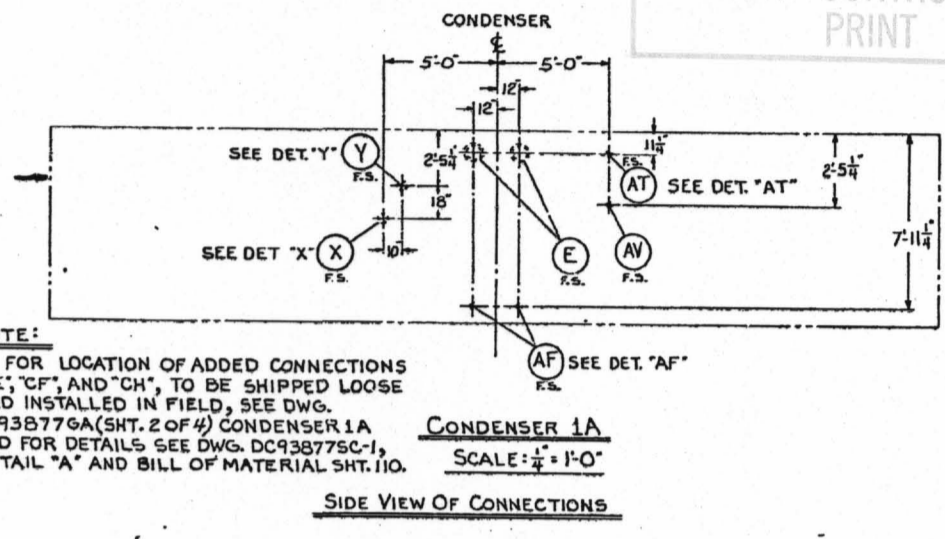
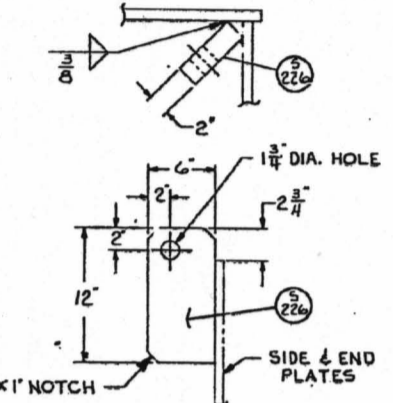
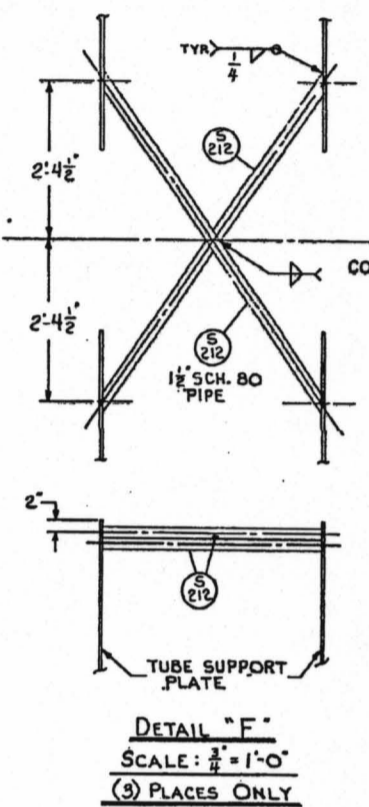
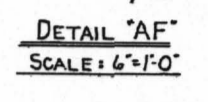
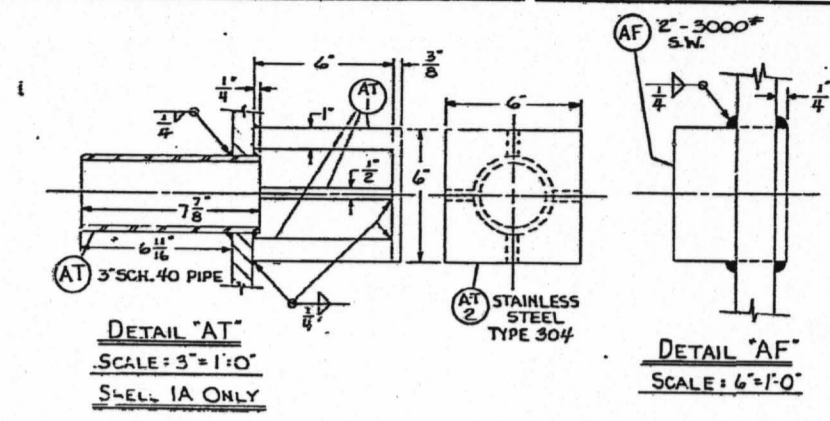
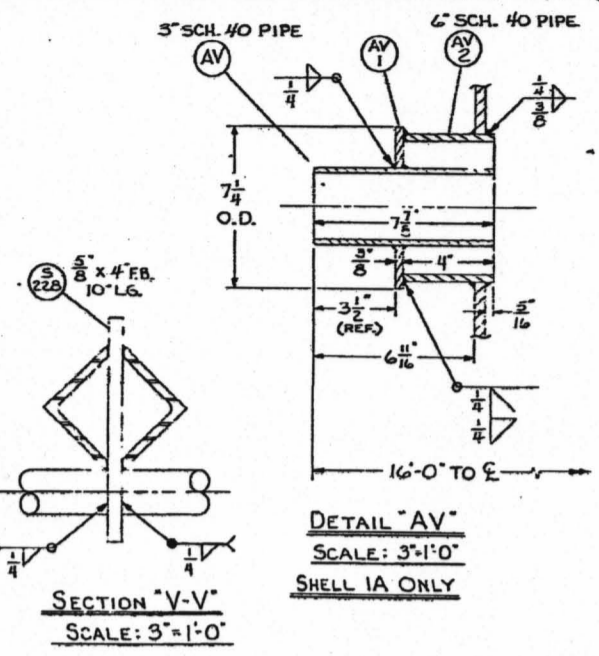
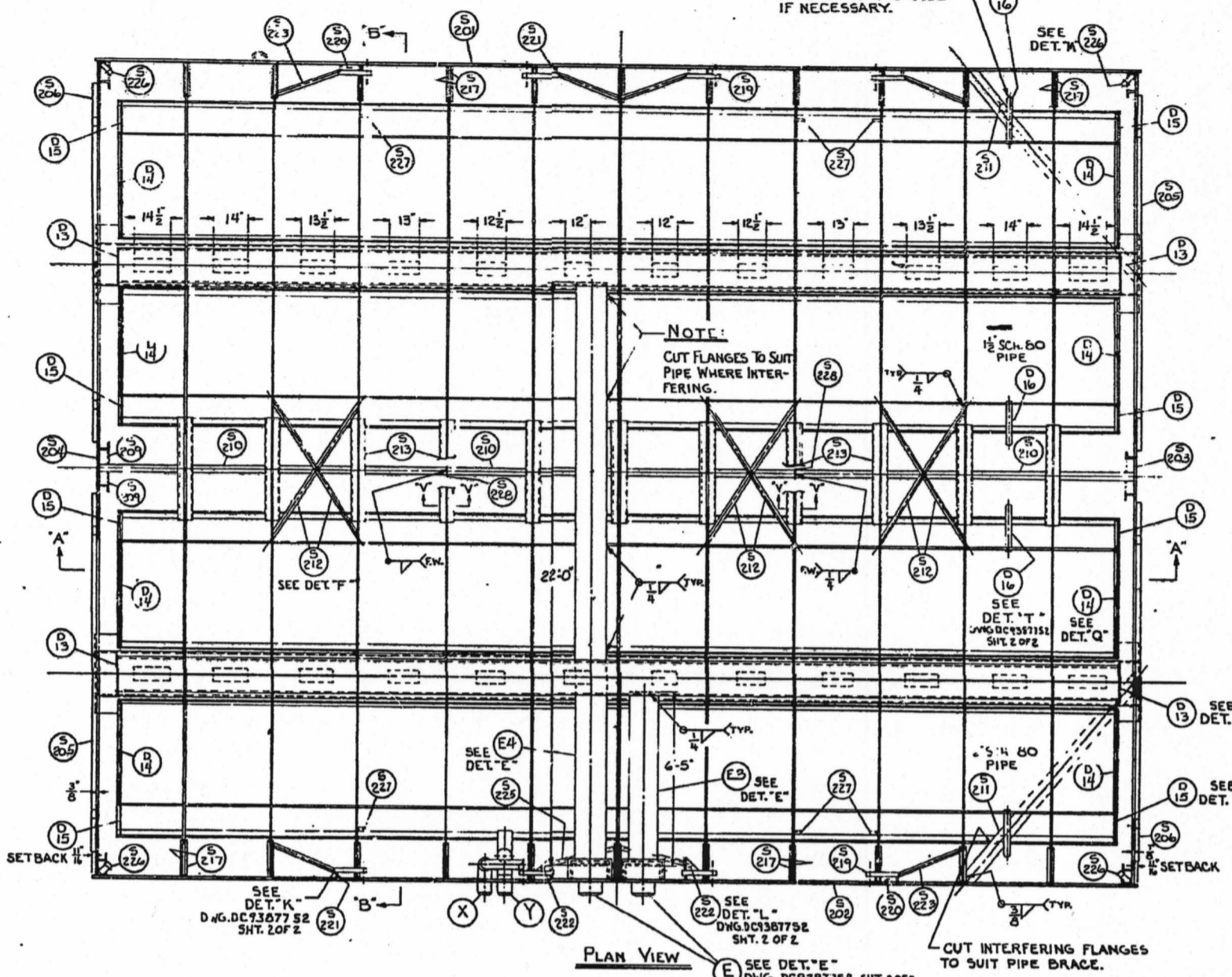
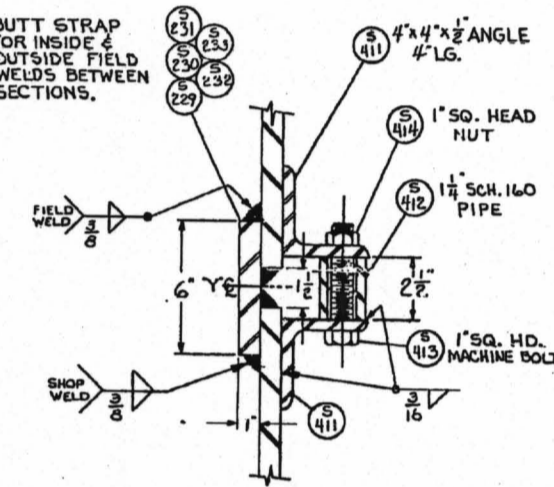
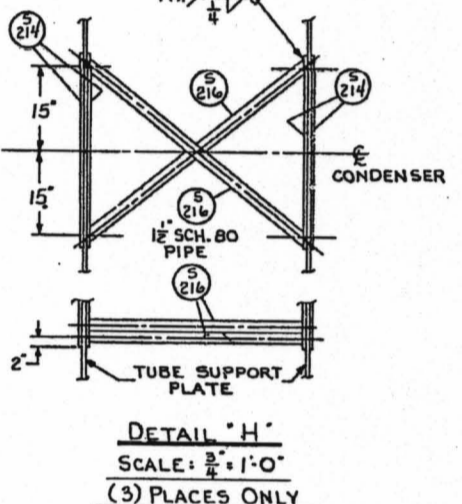


ALT.	DATE	REVISION	BY	CHK.
A	8/19/74	INCREASED LENGTH OF PG. NOS. D1B & D21L IN SECTIONS 1 & 2.	DCB	M
B	8/19/74	ADDED TOTAL WEIGHT AND WEIGHT PER SECTION. ADDED NOTES WITH INFORMATION ABOUT ADDITIONAL CONNECTIONS "CE", "CF", "CG", "CH" AND "CI".	DCB	M

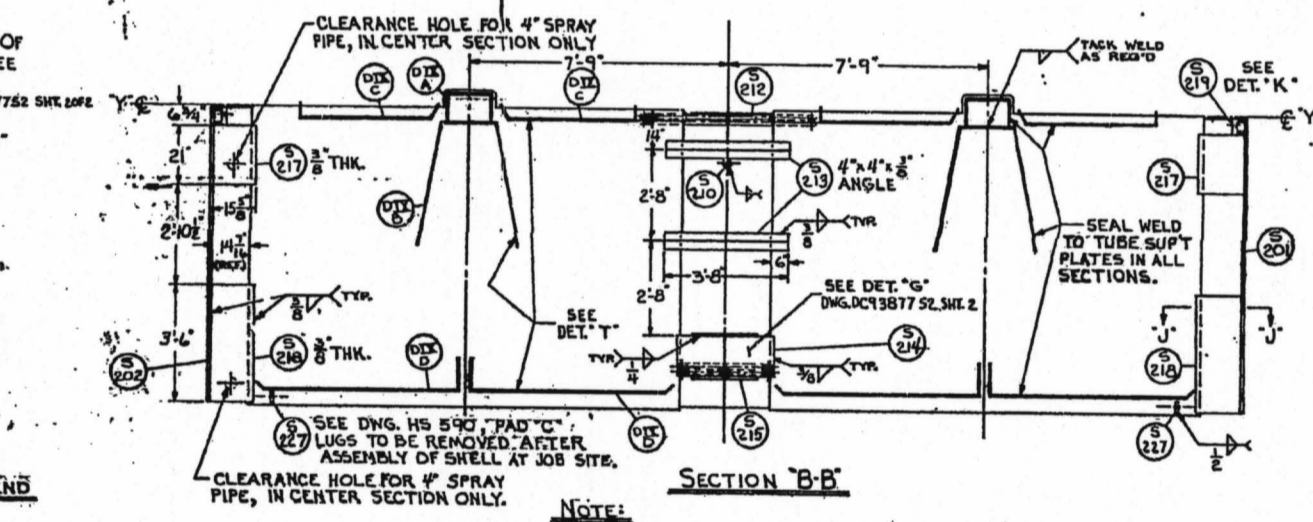
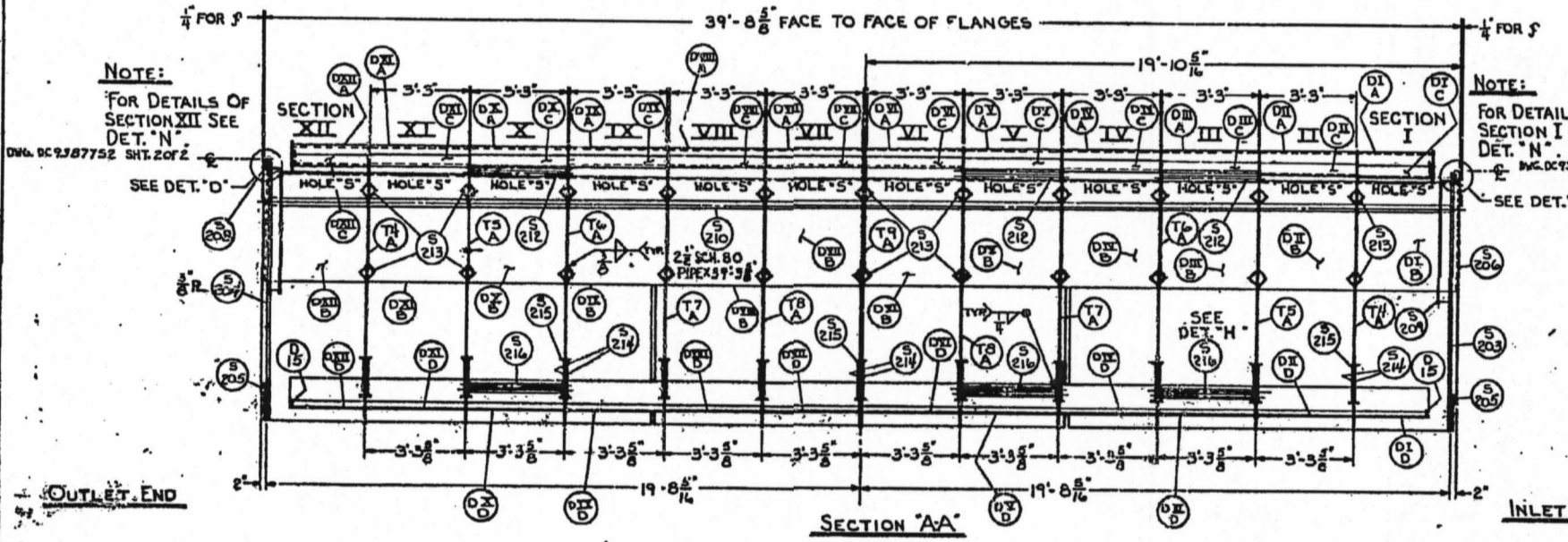
EXPIRES ON  
**STOP**  
**MAR 27 2000**  
 NON-CONTROLLED  
 PRINT



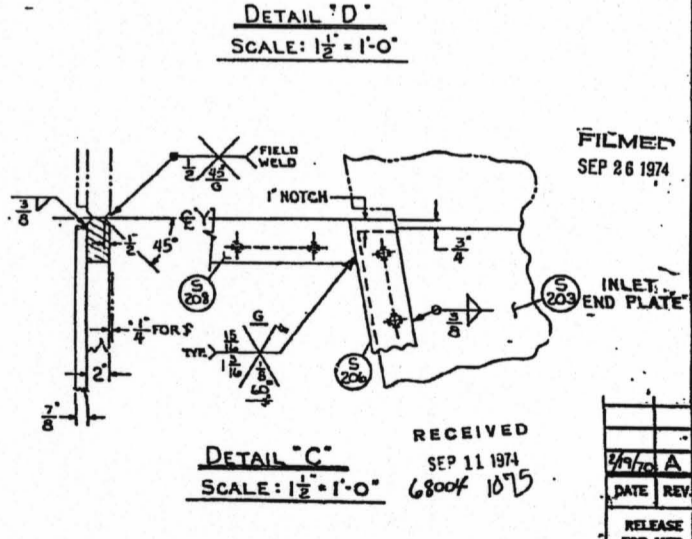
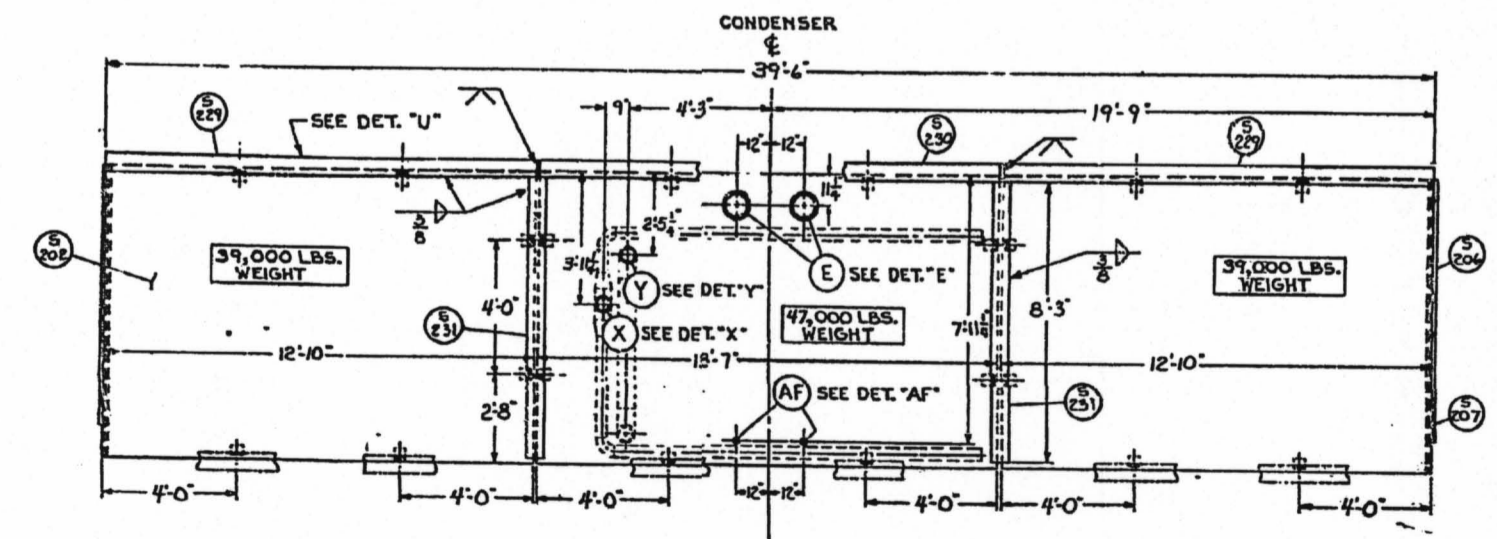
NOTE:  
 FOR LOCATION OF ADDED CONNECTIONS "CE", "CF", AND "CH", TO BE SHIPPED LOOSE AND INSTALLED IN FIELD, SEE DWG. EC93B776A (SHT. 2 OF 4) CONDENSER 1A AND FOR DETAILS SEE DWG. DC93B775C-1, DETAIL "A" AND BILL OF MATERIAL SHT. 110.



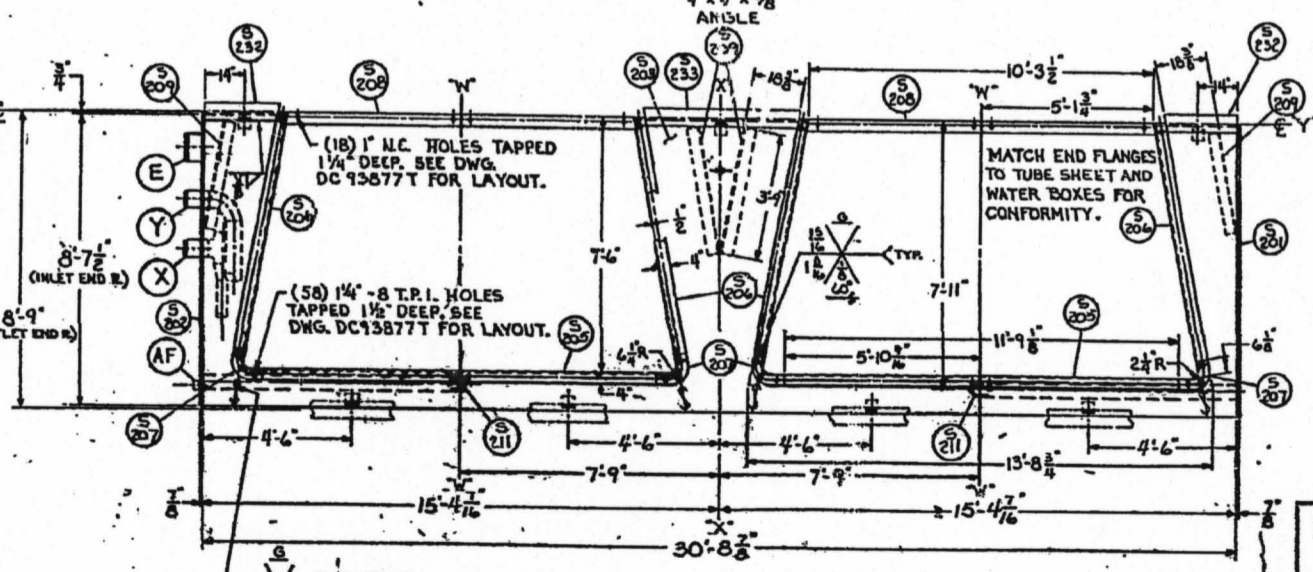
DETAIL OF ALIGNMENT BRACKETS TO BE SHIP INSTALLED AT TOP, BOTTOM AND END OF SECTIONS.  
 DETAIL "U"  
 SCALE: 3\"/>



NOTE:  
 ALL BAFFLES, PLENUMS, AND TRAYS TO BE SHIPPED LOOSE AND FIELD WELDED IN SECTIONS IV AND IX.



NOTE:  
 FOR LOCATION OF ADDED CONNECTION "CI", TO BE SHIPPED LOOSE AND INSTALLED IN FIELD, SEE DWG. EC93B776A (SHT. 1 OF 4) CONDENSER 1B AND FOR DETAILS SEE DWG. DC93B775C-1, DETAIL OF START-UP RECIRCULATION CONNECTION AND BILL OF MATERIAL SHT. 110.



RECEIVED  
 FEB 5 1974  
 BURNS & MCDONNELL

RECEIVED  
 SEP 11 1974  
 1800P 1075

INDUSTRIAL PRODUCTS DIVISION MARYLAND SHIPBUILDING & DRYDOCK CO. BALTIMORE, MD.	
MIDDLE SHELL ASSEMBLY CONDENSER 1B	
DESIGNED	CHECKED
DRAWN	APPROVED
TOTAL WEIGHT	SCALE
75,000 LBS.	1/2\"/>

D-3