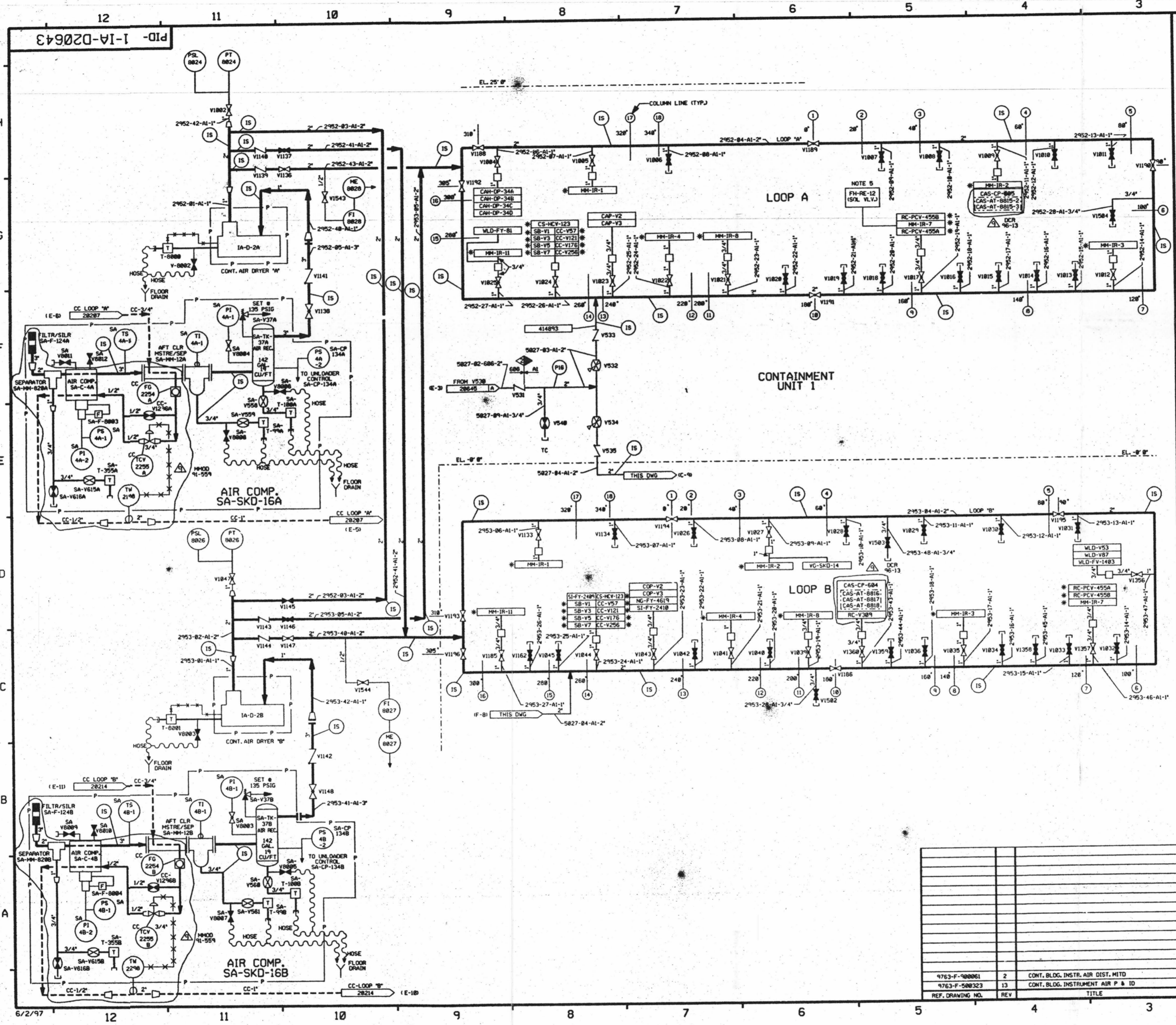


FOR INFORMATION ONLY



FOR P&ID REFERENCE DRAWINGS, SYMBOLS AND ABBREVIATIONS REFER TO DRAWINGS PAID - LEGEND 1 AND PAID - LEGEND 2

LEGEND			
DESIGN	TEST	MIN. TEST	TEST
PRESSURE	PRESSURE	TEMP °F	MEDIUM
(PI6)	INTEGRITY TEST	225 PSIG 281/298 PSIG	35° F AIR
(IS)		N.O.P.	
(N)	NO TEST REQUIRED		

NOTES:
 A. VENTS & DRAINS WITH CAPS/BLIND FLANGES ETC. SHALL BE TESTED TO THE LAST ISOLATION VALVE.

- NOTES:
- WORK THIS DRAWING WITH DRAWINGS 20636 THRU 20642 & 20645 THRU 20646.
 - ALL LINES, EQUIPMENT, COMPONENTS AND INSTRUMENTS HAVE SYSTEM PREFIX UNLESS NOTED OTHERWISE.
 - ASTERISK (*) DENOTES DUAL AIR SUPPLY LOOP A & LOOP B.
 - (D) DENOTES DUPLEX AIR FILTER.
 - USE SPARE INSTRUMENT AIR VALVE IN MM-IR-7 TO ACTUATE SOLENOID VALVE DURING REFUELING.
 - INSTRUMENTATION ON THIS DWG. DOWNSTREAM OF THE PIPING ROOT VALVE CONNECTIONS HAS NOT BEEN FIELD VERIFIED.
 - △ INDICATES REVISION LEVEL.
 - DELETED.
 - *CLEANLINESS CLASS 'B'
 - SYSTEM DESCRIPTION NO. IS 50-4
 - VALVE SYMBOL MAY NOT BE REPRESENTATIVE OF INSTALLED COMPONENT TYPE, REFER TO VALVE LIST.

REV	DATE	DSGN	DRWN	CHKD	CDE	SES	DESCRIPTION
9	6/9/97	MPW		RLS	FAC	SPS	INCRP. MMOD-91-508 CA-8, DCM 84 & 85 DMS DCR 86-13 DSN 88
8	1/31/96	BCL		MPW	DWS	RSG	INCRP. MMOD-95-578 CA-8
7	12/4/94	MPW		BCL	DWS	MHO	INCRP. MMOD-93-545 CA-8
6	6/28/94	MPW		DWS	BCL	BAW	INCRP. DCR-91-068 CA-8
5	8/23/92	BCL		HRB	MPW	GRM	REINCRP. DCR-90-084 CA-8
4	8/21/92	BCL		HRB	RSG	GRM	INCRP. DCR-90-084 CA-8
3	7/18/92	HRB	FBC	JM	MPW	GRM	INCRP. MMOD-90-582, CAB
2	1/18/90	HRB	FBC/PMC	OPH	APL	GRM	INCRP. DCR 86-328 CA18 RE-INCRP. ECA 99/114614A REVISED NOTE 2, LEGEND NOTE A PER ANSI B31.1 1977 SEC 137.1.2E DELETED NOTE 8 MODIFIED 8-8-93 & F-8804 PER FP-28438
1	11/6/86	MPJ	TAK	WRD	BCL	RRR	INCRP. NCR 86/111A MOVED INPLETS & CAPS TO SPARE INSTR. VALVES PER AS-BUILT CONDITION. REVISED RELIEF VALVE TAG. MOVED FLANGES AND MM-IR-6 PER LEG. PAID. FLOW DIRECTION PER P&ID. CONTINUATION OF INSTRUMENTATION FOR CS&O. NOTES 1, 2, 3 & 4. MTD. BECAUSE CHANGED NOTE 8 TO MTD. 5. ISSUED FOR OPERATIONS

North Atlantic Energy Service Corporation

INSTRUMENT AIR CONTAINMENT BUILDING DETAIL

PID- 1-IA-D20643

9763-F-100061	2	CONT. BLDG. INSTR. AIR DIST. MTD
9763-F-500323	13	CONT. BLDG. INSTRUMENT AIR P & ID
REF. DRAWING NO.	REV	TITLE

D-40