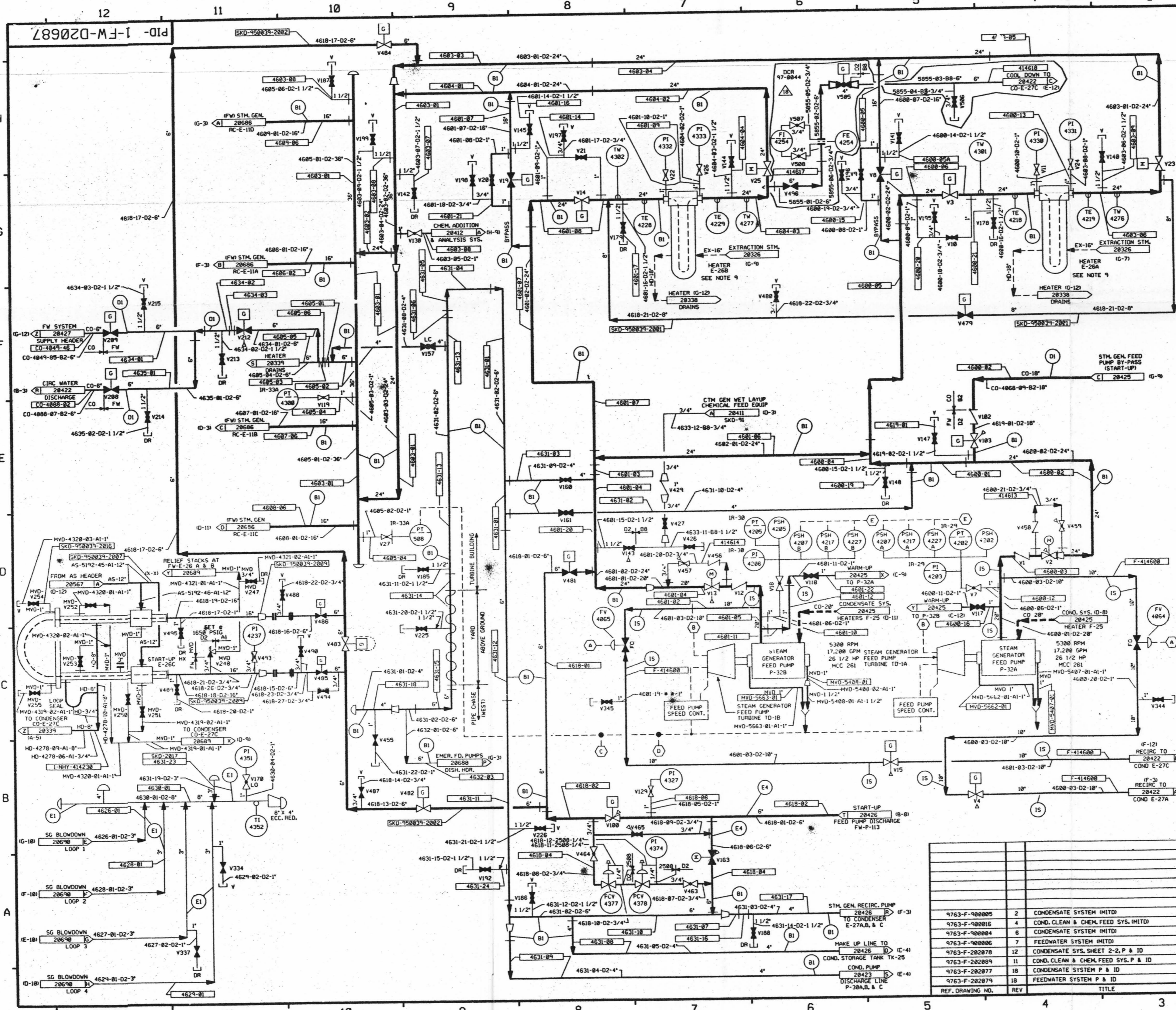


FOR INFORMATION ONLY



FOR PAID REFERENCE DRAWINGS, SYMBOLS AND ABBREVIATIONS REFER TO DRAWINGS PAID - LEGEND 1 AND PAID - LEGEND 2

LEGEND

DESIGN PRESSURE	TEST PRESSURE	MIN. TEST TEMP. °F	TEST MEDIUM
(B)	TEMP. TEST BOUNDARY		
(Y)	TEST BOUNDARY		
(BI)	INTEGRITY TEST	1500 PSIG 2250/2395 PSIG	35 D.M. WATER (SEE NOTE)
(C2)	INTEGRITY TEST	1185 PSIG 1481/1578 PSIG	(SEE NOTE) WATER
(DI)	INTEGRITY TEST	600 PSIG 900/954 PSIG	35 D.M. WATER
(E4)	INTEGRITY TEST	150 PSIG 225/245 PSIG	35 D.M. WATER
(E1)	INTEGRITY TEST	250 PSIG 375/398 PSIG	35 WATER
(IS)	INITIAL SERVICE	N.D.P.	
(N)	NO TEST REQUIRED		

NOTE: A. PIPE HAVING A DIAMETER 2" OR GREATER THAN 6" WITH 5/8" WALL THE TEST TEMPERATURE TO BE 50°F MINIMUM. WHEN THE STEAM GENERATOR IS INCLUDED IN THE PRESSURE TEST BOUNDARY, TEST TEMPERATURE TO BE 100°F MINIMUM.
B. VENTS & DRAINS WITH CAPS/BLIND FLANGES ETC. SHALL BE TESTED TO THE LAST ISOLATION VALVE.

- NOTES**
- WORK THIS DRAWING WITH 28064 THRU 28066 & 28068, 28069 & 28070.
 - ALL LINES, EQUIPMENT, COMPONENTS AND INSTRUMENTS HAVE SYSTEM PREFIX "FW" UNLESS OTHERWISE NOTED.
 - INSTRUMENT REFERENCES:
 - (A) FEEDWATER PUMP FLOW (LOW)
 - (B) PROTECTION SYS. FW ISOLATION SIGNAL
 - (C) MAIN STEAM HEADER PRESSURE
 - (D) TOTAL STEAM FLOW
 - (E) TRIPS FEEDWATER PUMPS ON 2/3 HIGH PRESSURE.
 - ALL LINES, EQUIPMENT, COMPONENTS & INSTRUMENTS ARE SAFETY CLASS UNLESS OTHERWISE NOTED.
 - CLEANLINESS CLASS "C"
 - DELETED
 - SYSTEM DESCRIPTION NO. IS SD-1
 - △ INDICATES REVISION LEVEL
 - FOR OTHER NOZZLES ON HEATERS 1-FW-E-2568B SEE PID'S:
 - EX-2326
 - FW-28094
 - EX-28475
 - MD-28475
 10. * * * OUT OF SPEC (STAINLESS STEEL)

REV	DATE	BY	CHKD	APP'D	DESCRIPTION		
18	11/21/99	RVS			INCORP. DCR 97-8844 DCN 80, 81		
17	7/23/99	BGS			INCORP. MHO 96-636 DCN-B		
16	11/16/97	BGS			INCORP. MHO 96-594 DCN-B		
15	7/27/97	MPW			INCORP. DCR 95-39 CA 49		
14	6/18/97	MPW			INCORP. DCR 95-39 CA 29 & DCN 34		
13	4/16/97	MPW			INCORP. MHO 96-544 CAB		
12	12/2/96	MPW			INCORP. DCR 95-39 CA B 1 & 6 INCORP. DCR 94-37 CA B		
11	7/18/94	MPW			INCORP. DCR 96-428 CA 0, DFR 93:106 REV. B		
10	4/25/93	HRB			INCORP. MHO 92-553 CAB		
9	9/27/92	HRB			INCORP. DCR 91-57 CAB		
8	7/2/92	HRB			REV. LINE NOS. PER RECD 150 "S"		
7	6/28/92	DWS			INCORP. MHO 90-877 CA 5		
6	1/25/91	DPM			INCORP. DCR 91-849 CAB		
5	5/26/91	HRB			REVISED NOTES 1, 2, 3 & 4, LINE NO. ADDED LINE NO.		
4	3/24/90	HRB			INCORPORATED MHO 90-588 CAB		
3	8/30/87	MPW			INCORPORATED DCR 89-21 CA REVISED INSTR. PER SIS VERIFICATION - SEE LEGEND NOTE B PER 9763-F-900806, DELETED NOTE 6 AND TEST BOUNDARY SYMBOL PER LEGEND NOTE B		
2	5/14/86	MPW			REVISED NOTE 1 & 2 INTO INFO & COND'S DELETED DUPLICATED 6 & 7 PER ECA 14/1/86 LINE EXPANDED 8 INTAKE HEADER AREA FOR CLMNTY. SUPERSEDED BY DCR 87-428		
1	10/4/86	PAL			REVISED PER LEG. PAID. ADDED NOTE 6, AND MITD REF. DWGS. REV'D TO CLARIFY DUPLICATION OF SYS. INCORP. ECA 94/112343A, ADDED LOCAL DESIGNATION TO CONTINUATIONS, REV'D SIZE OF FV-4864 & FV-4865 FROM 8" TO 10", DELETED NOTES 11, 12, 13, 14 PER ECA 14/1/86 LINE EXPANDED 8 INTAKE HEADER AREA FOR CLMNTY.		
REV	DATE	DSGN	DRWN	CHKD	COE	SES	DESCRIPTION

North Atlantic Energy Service Corporation

FEEDWATER SYSTEM DETAILS

SEABROOK STATION PID-1-FW-D20687

REF. DRAWING NO.	REV	TITLE
9763-F-900805	2	CONDENSATE SYSTEM (MITD)
9763-F-900806	4	COND. CLEAN & CHEM FEED SYS. (MITD)
9763-F-900804	6	CONDENSATE SYSTEM (MITD)
9763-F-900806	7	FEEDWATER SYSTEM (MITD)
9763-F-282878	12	CONDENSATE SYS. SHEET 2-2, P & ID
9763-F-282879	11	COND. CLEAN & CHEM FEED SYS. P & ID
9763-F-282877	18	CONDENSATE SYSTEM P & ID
9763-F-282874	18	FEEDWATER SYSTEM P & ID

D-35