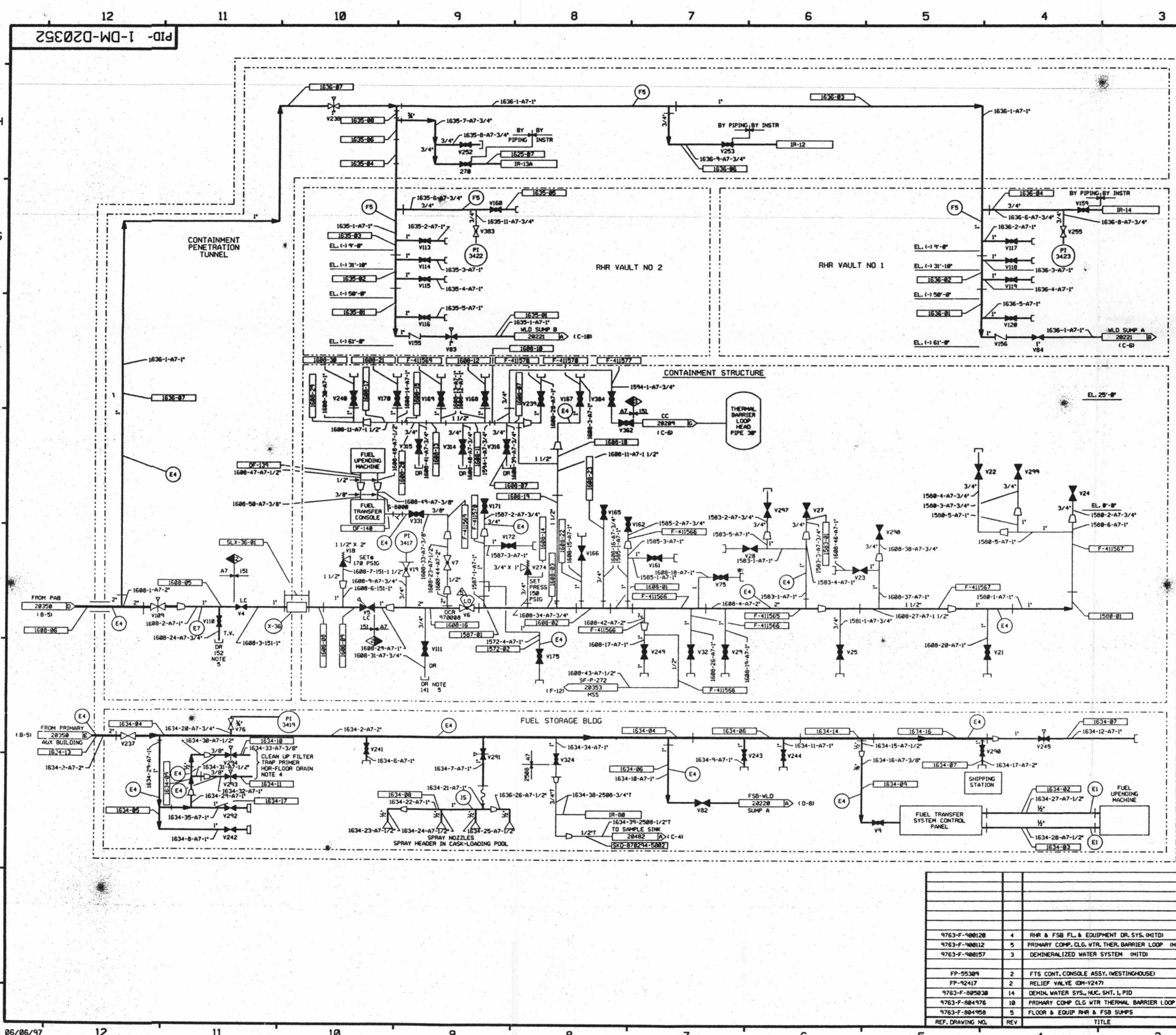


FOR INFORMATION ONLY



FOR PAID REFERENCE DRAWINGS, SYMBOLS AND ABBREVIATIONS REFER TO DRAWINGS PAID - LEGEND 1 AND PAID - LEGEND 2

LEGEND

DESIGN PRESSURE	TEST PRESSURE	MIN. TEST TEMP. F	TEST MEDIUM
(E4)	158 PSIG	225/245 PSIG	35 WATER
(E7)	178 PSIG	212.5/225.25 PSIG	35 WATER
(F5)	178 PSIG	205/275 PSIG	35 WATER
(E1)	258 PSIG	375 PSIG	35 WATER

NOTES:
 A) VENTS & DRAINS WITH CAPS/BLIND FLANGES ETC. (ASME CL 2 & 3, NPS) SHALL BE TESTED TO THE LAST ISOLATION VALVE.
 B) RECTOR CONTAINMENT PENETRATION SEAL PLATE WELDS ON F-36 SATISFACTORILY TESTED PER DR-17.

- NOTES:
- ALL LINES, EQUIPMENT, COMPONENTS, AND INSTRUMENTS HAVE SYSTEM PREFIX UNLESS NOTED OTHERWISE.
 - WORK THIS DRAWING WITH DWG'S 28348 THRU 28351 & 28353 THRU 28356.
 - ALL LINES, EQUIPMENT, COMPONENTS, AND INSTRUMENTS HAVE SAFETY CLASS NMS, UNLESS NOTED OTHERWISE.
 - CLEANUP FILTER TRAP PRIMER FOR FLOOR DRAIN.
 - CAPPED LINES SHOWN OR XXX ARE NOT HARD PIPED TO DRAINS.
 - CLEANLINESS CLASS "B"
 - INDICATES REVISION LEVEL
 - DELETED
 - SYSTEM DESCRIPTION NO. IS SD-28
 - PIPE CAP MAY BE INSTALLED AT DEMIN WATER HOSE STATIONS AS DEEMED NECESSARY BY STATION STAFF TO PREVENT LEAKAGE.

PORTIONS OF THIS DRAWING ARE
NUCLEAR SAFETY RELATED

REV	DATE	DSGN	DRWN	CHKD	COE	SES	DESCRIPTION
5	4/1/87	DVS	MM	FAL	NMG	INCORP	DCR 970008 DCN*08
4	5/21/84	HRB	FCB	JM	BCL	OPM	INCORP. DCR 87-294 CM
3	11/7/88	GPM	RMC	APL	MRB	RRC	INCORP. NCR 86-116 REV 1
2	3/28/87	JDM	HVM	MRJ	BCL	RRC	REVISED LEGEND NOTE NUMERIC SYSTEM TO ALPHA LEGEND NOTE 4 PER 9763-F-084958 AND ANSI B31.1 1977-SEC. 877.1.2. NOTE 5 DELETED NOTE 6 TEST BOUNDARY SYMBOL
1	3/5/87	PAL	TAK	WRD	BCL	RRC	PIES WAS FIRST IN SERIAL REVISED ROOT VALVE COING PER ERECTION ISO. ADDED NOTES 7 & 8. ADDED STAINNER PER PP-55389. ADDED NOTES 10, 11, 12, 13, 14, 15, 16, 17, 18, 19, 20, 21, 22, 23, 24, 25, 26, 27, 28, 29, 30, 31, 32, 33, 34, 35, 36, 37, 38, 39, 40, 41, 42, 43, 44, 45, 46, 47, 48, 49, 50, 51, 52, 53, 54, 55, 56, 57, 58, 59, 60, 61, 62, 63, 64, 65, 66, 67, 68, 69, 70, 71, 72, 73, 74, 75, 76, 77, 78, 79, 80, 81, 82, 83, 84, 85, 86, 87, 88, 89, 90, 91, 92, 93, 94, 95, 96, 97, 98, 99, 100. ISSUED FOR OPERATIONS

North Atlantic Energy Service Corporation

DEMINERALIZED WATER DISTRIBUTION SYSTEM CONTAINMENT STRUCTURE

PID- 1-DM-D20352

REF. DRAWING NO.	REV	TITLE
9763-F-980128	4	RHR & FSB FL. & EQUIPMENT DR. SYS. (HITD)
9763-F-980112	5	PRIMARY COMP. CLG. VTR. THER. BARRIER LOOP (HITD)
9763-F-980157	3	DEMINERALIZED WATER SYSTEM (HITD)
FP-55389	2	FTS CONT. CONSOLE ASSY. (MESTINGHOUSE)
FP-92417	2	RELIEF VALVE (M-V247)
9763-F-085038	14	DEMIN. WATER SYS. NUC. SHT. L. PID
9763-F-884176	18	PRIMARY COMP. CLG. VTR. THER. BARRIER LOOP
9763-F-884958	5	FLOOR & EQUIP. RHR & FSB SUMPS

D-32